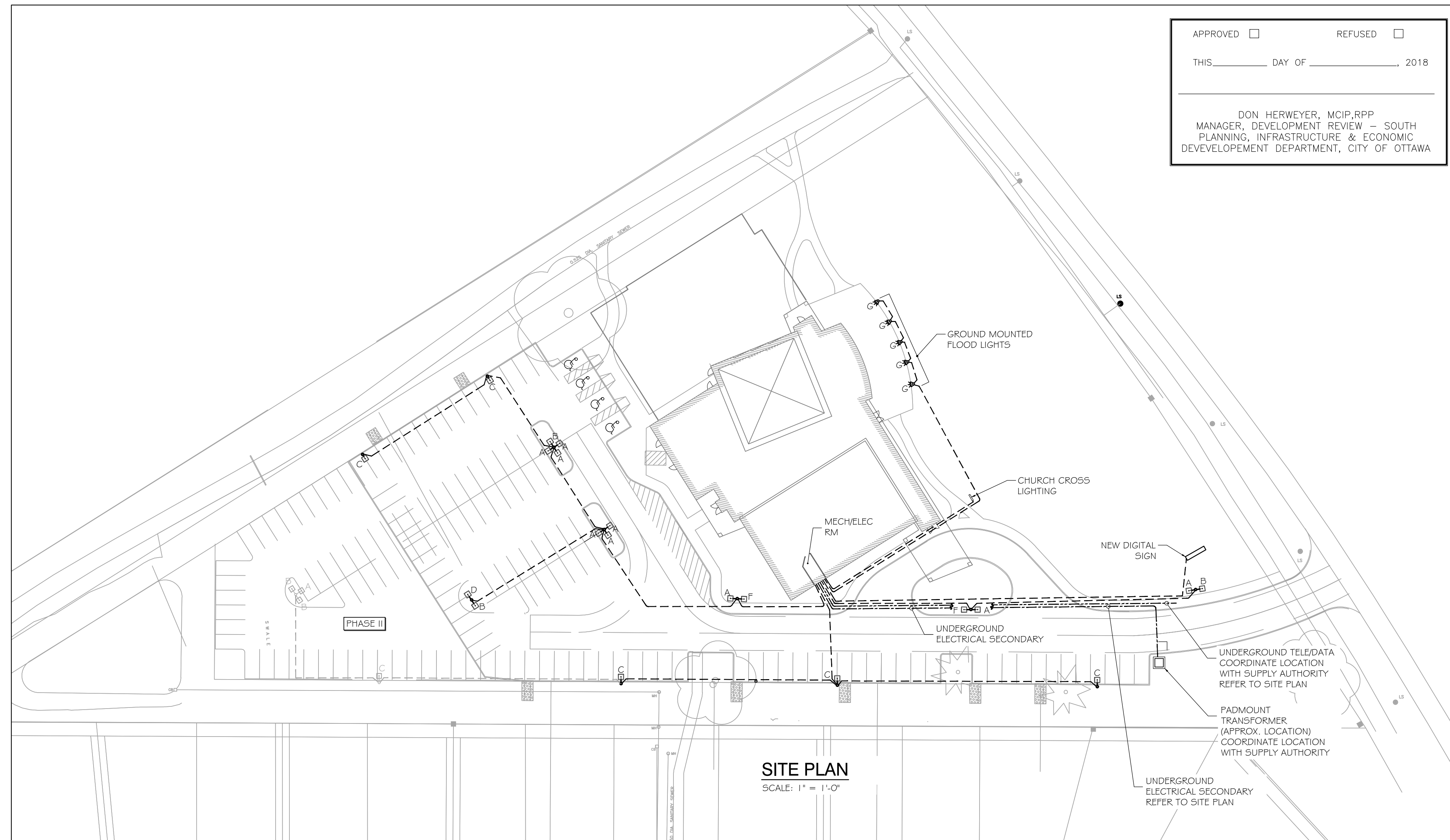
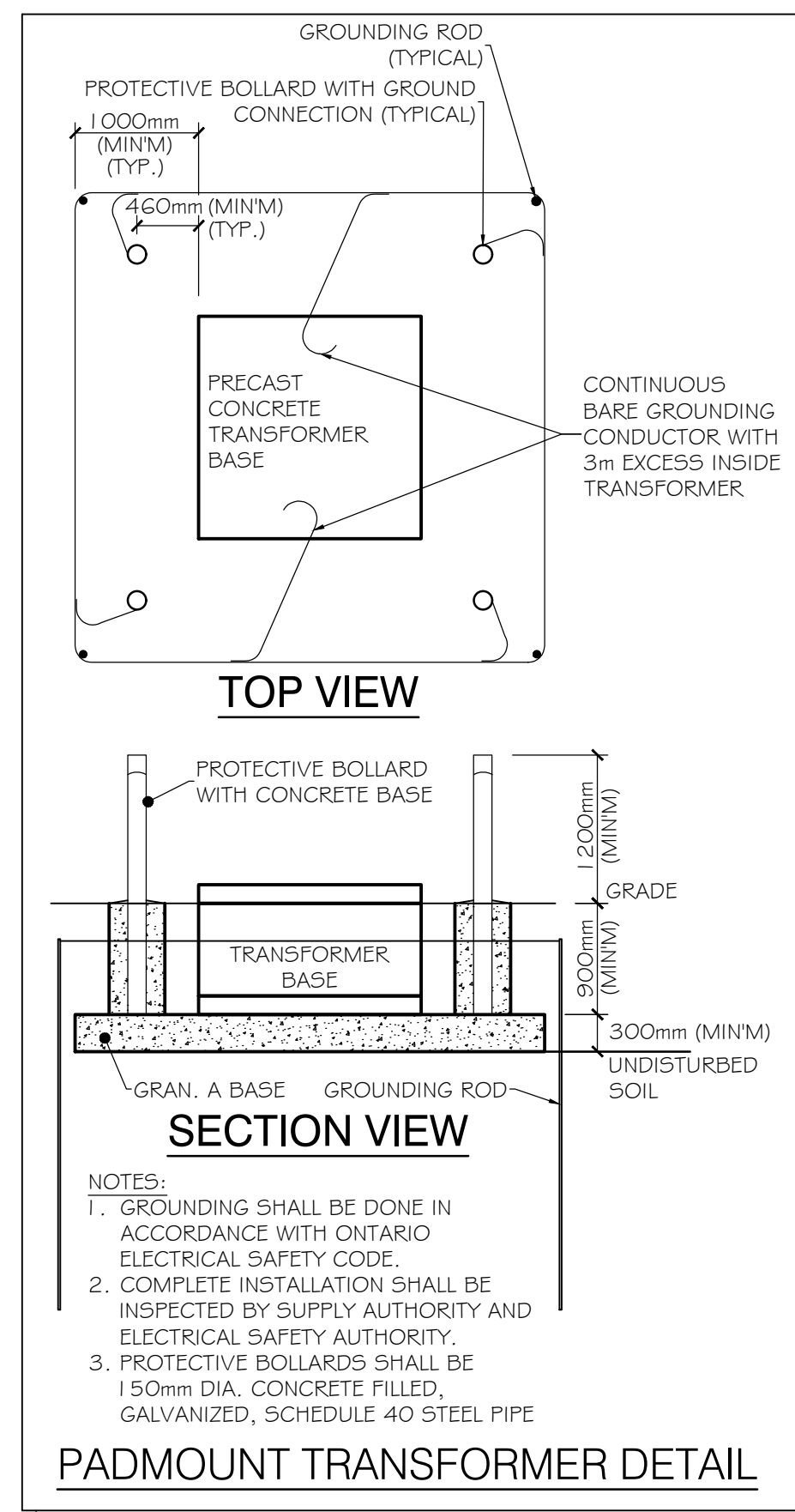
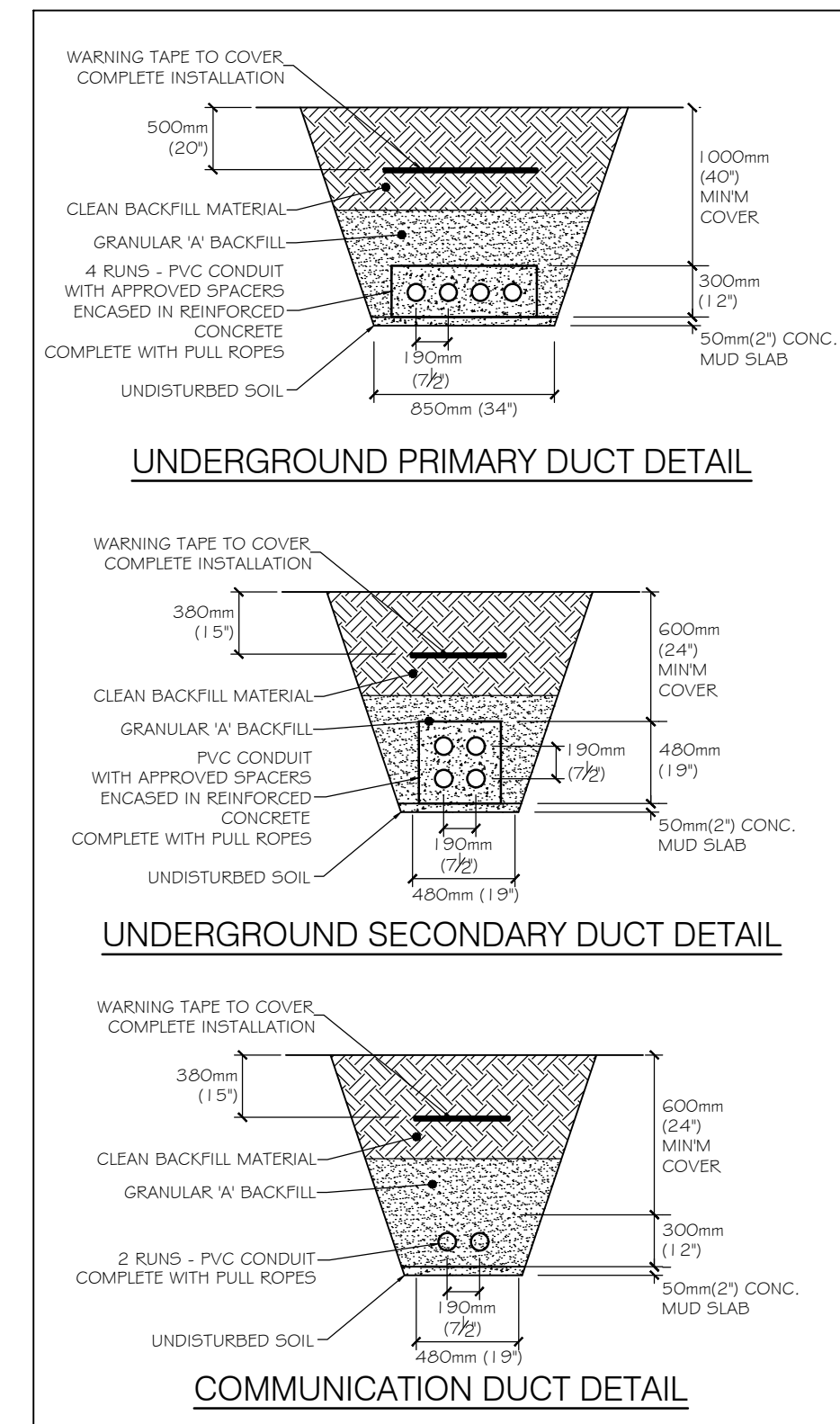
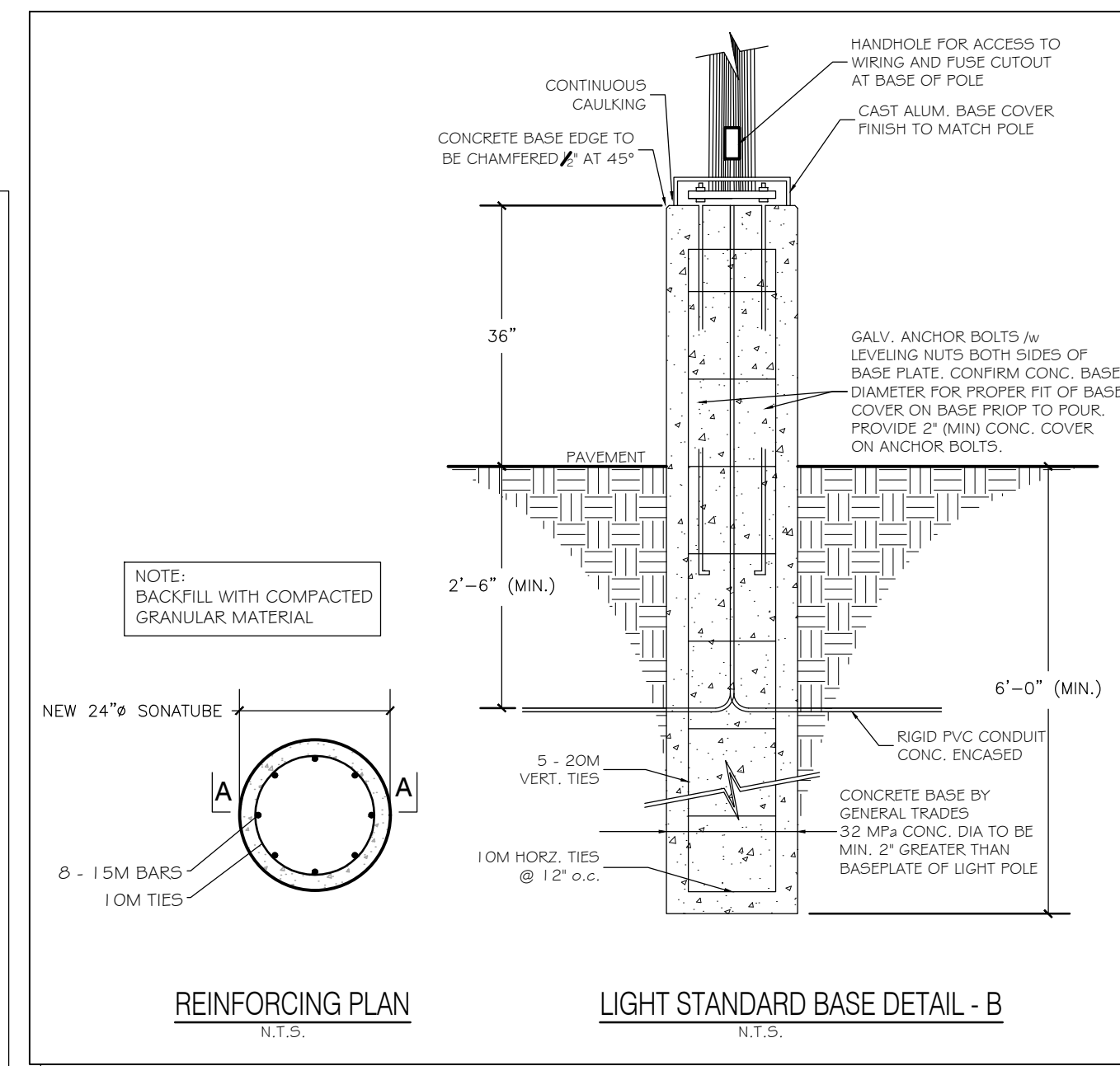
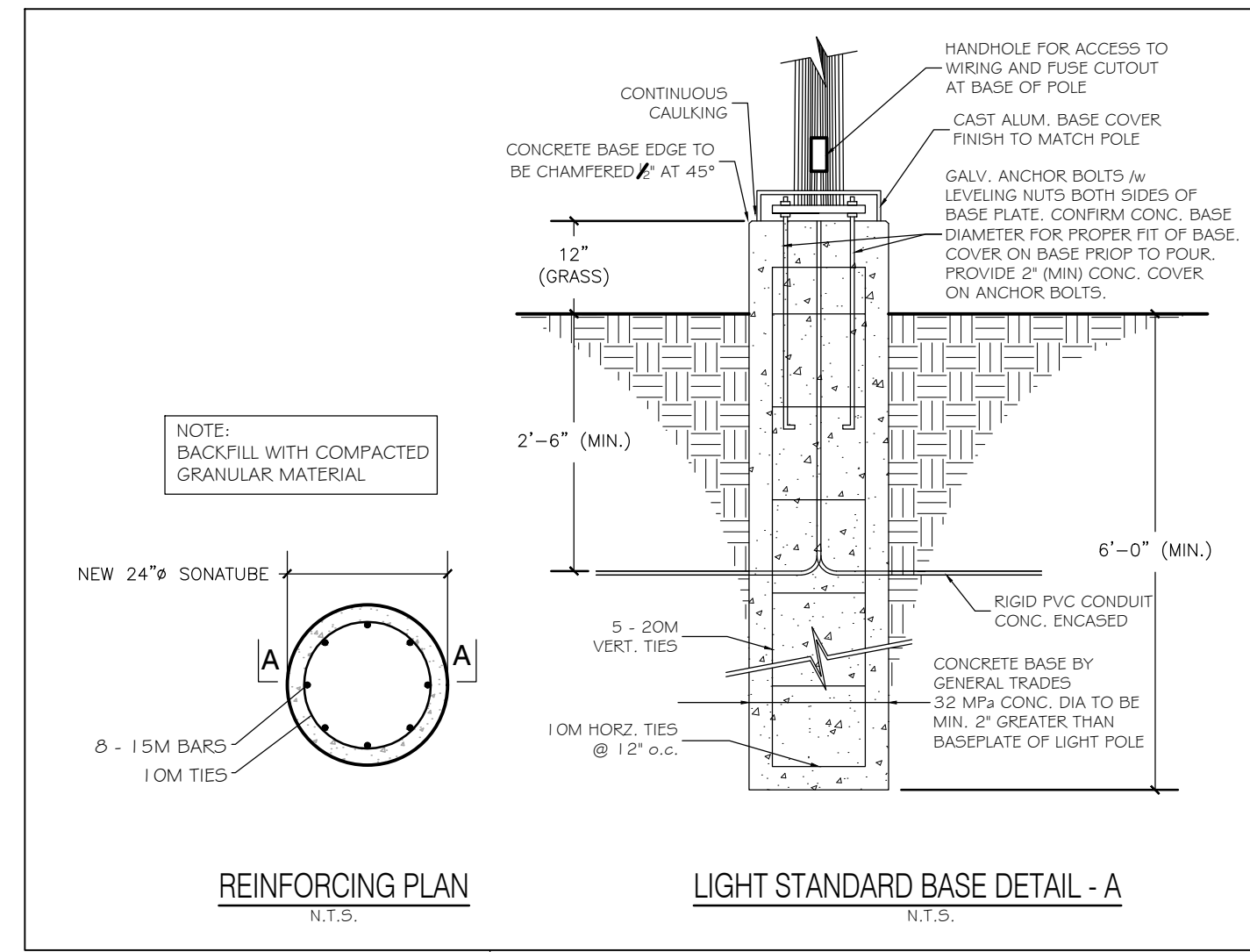


68 William St. Suite 200
Brockville, Ont. Telephone: (613) 499-2077

LUMINAIRE PARTS LIST							
Index	Manufacturer	Luminaire Type	Item Number	Luminous Flux	Light Loss Factor	Connected Load	Quantity
A	Lithonia Lighting	DSXI LED P1 40K TFTM MVOLT	DSXI LED P1 40K TFTM MVOLT	6963 lm	0.85	54 W	10
B	Lithonia Lighting	DSXI LED P1 40K T2S MVOLT	DSXI LED P1 40K T2S MVOLT	6984 lm	0.85	54 W	5
C	Lithonia Lighting	DSXI LED P8 40K BLC MVOLT	DSXI LED P8 40K BLC MVOLT	19884 lm	0.85	207 W	5
D	Lithonia Lighting	DSXI LED P8 40K TFTM MVOLT	DSXI LED P8 40K TFTM MVOLT	24252 lm	0.85	207 W	1
F	Lithonia Lighting	DSXI LED P3 40K TFTM MVOLT	DSXI LED P3 40K TFTM MVOLT	12574 lm	0.85	102 W	2
G	Lumenpulse	LUMENBEAM	LBL-120/277-40K-FL-LSL-NO	2658 lm	0.85	49.4	5



3	MP	2018-04-18	FOR PERMIT
2	MP	2018-03-29	FOR REVIEW
1	GB	2018-01-25	REVISIONS, PER COMMENTS
0	MP	2017-11-16	PRELIMINARY
No.	By	Date	Revisions

The contractor must check and verify all dimensions on the job prior to start of construction.






 **ASTERN**
ENGINEERING GROUP INC.
CONSULTING ENGINEERS

Brookville Centre
125 Stewart Blvd. Suite 212
Brookville, Ont. K6V 4W4

Telephone: (613) 345-0400
Facsimile: (613) 345-0008
www.EastEng.com

Project Title:
BARRHAVEN FELLOWSHIP CRO
3058 JOCKVALE ROAD
NEPEAN, ONTARIO K2J 4J6
GORDON WEIMA, (613-850-1559)

Drawing Title:			
<h1>ELECTRICAL SITE PLAN</h1>			
Design:	Checked:	Approved: MAM	Project No.: 7495
Drawn: MP	Checked:	Date: 2017-10-26	Contract No.:
Scale:		Drawing No.:	
 Horizontal: AS SHOWN			
 Vertical: AS SHOWN			
REV DATE: 4/25/2018			