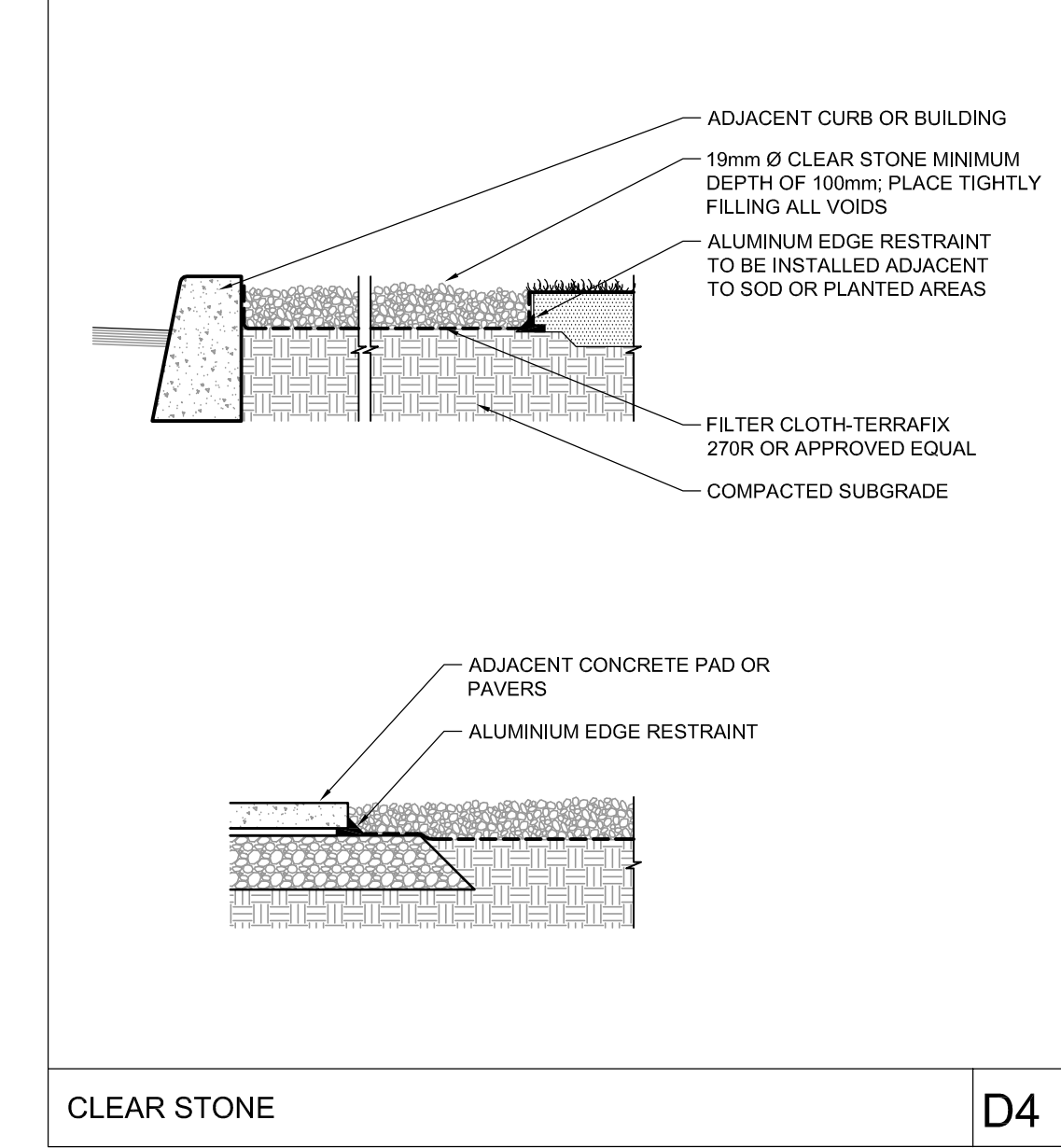
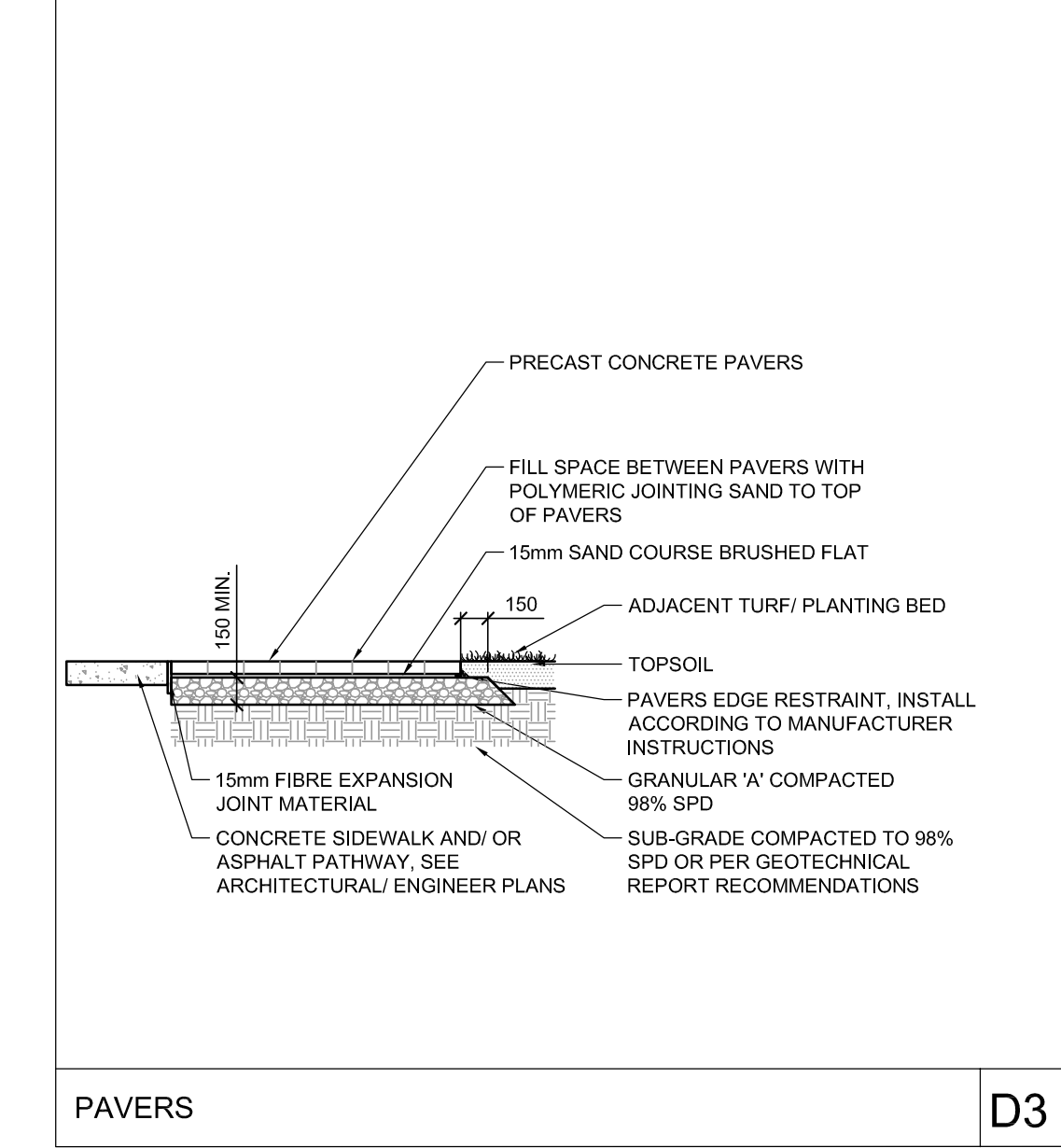
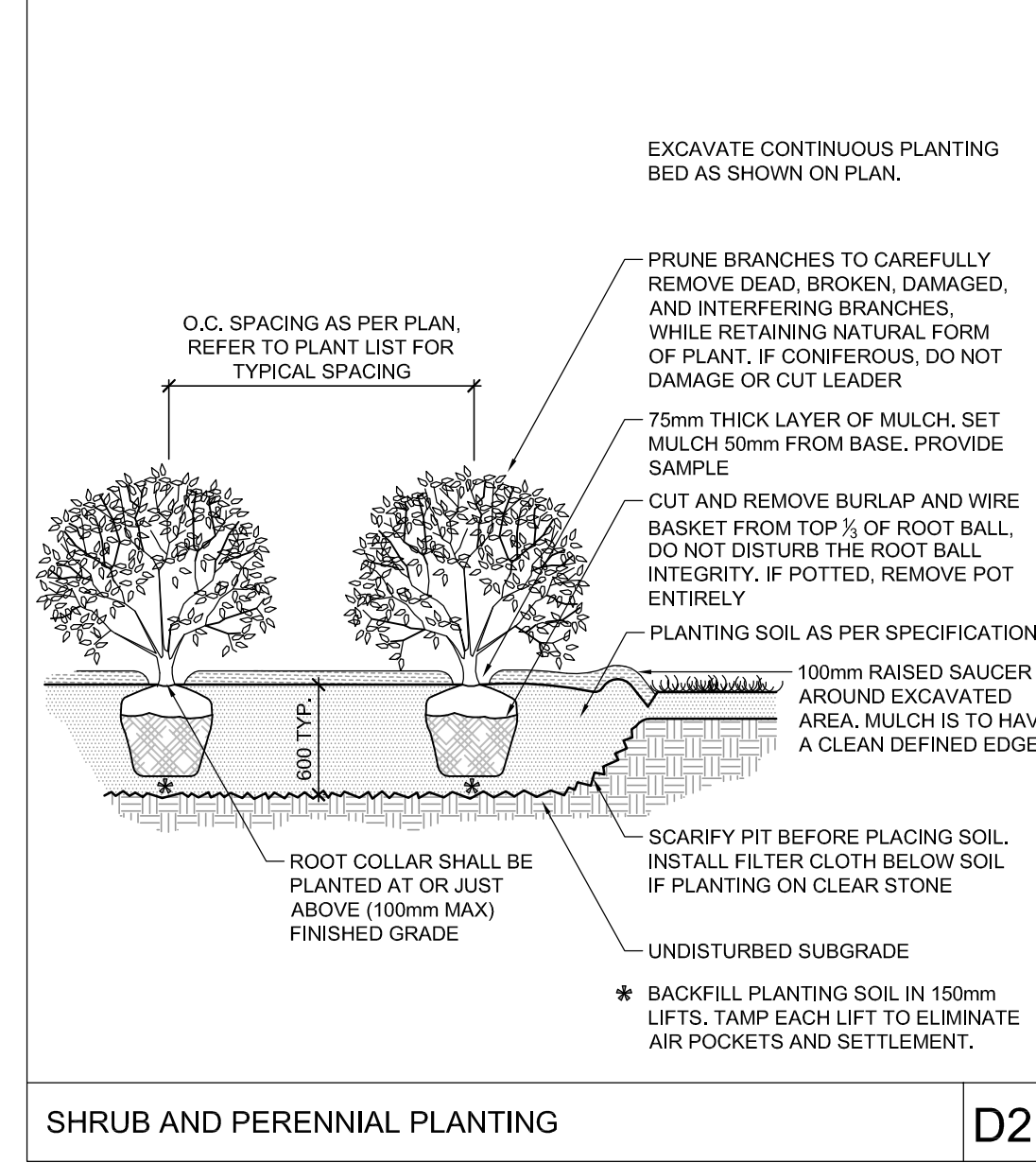
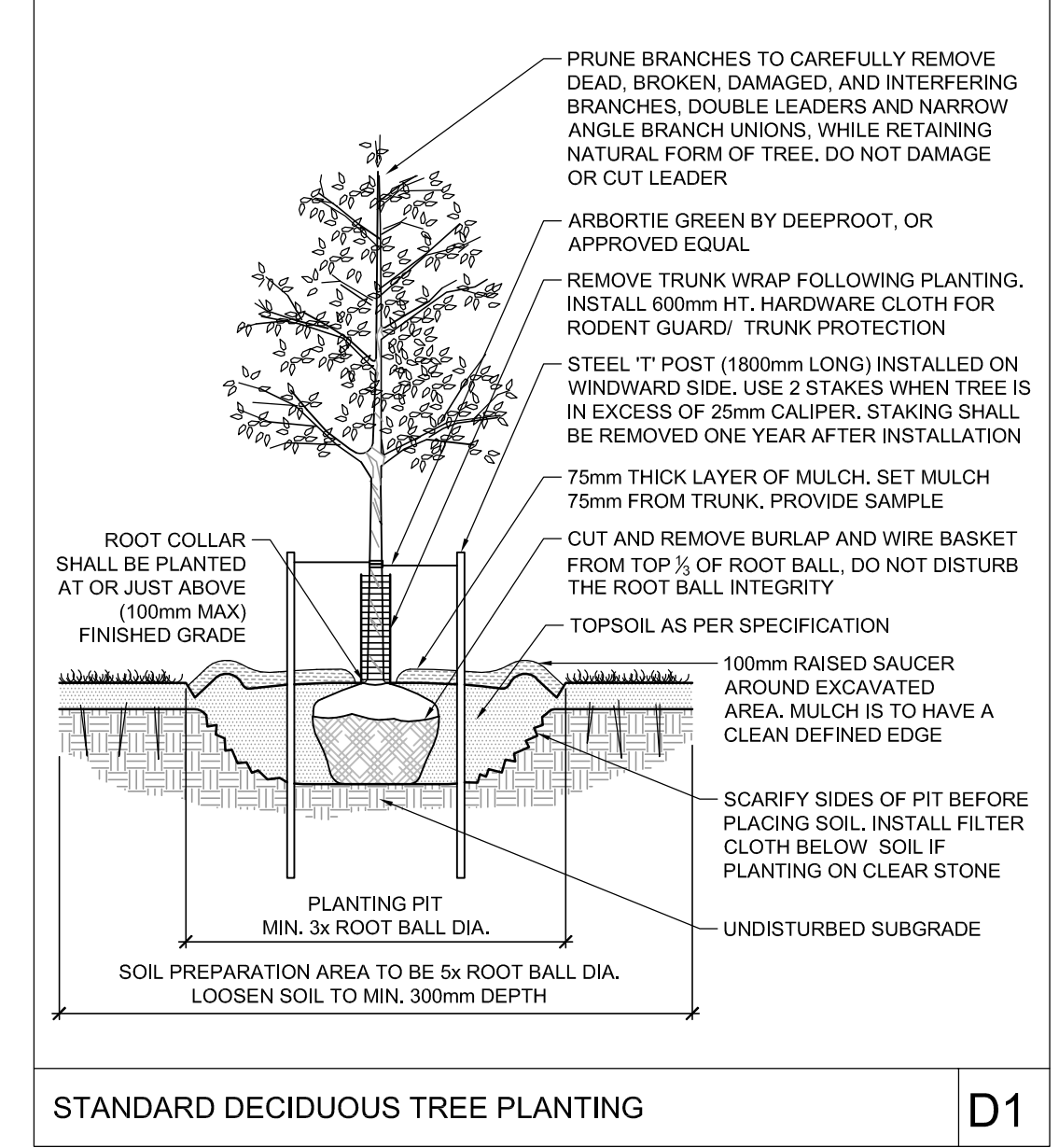
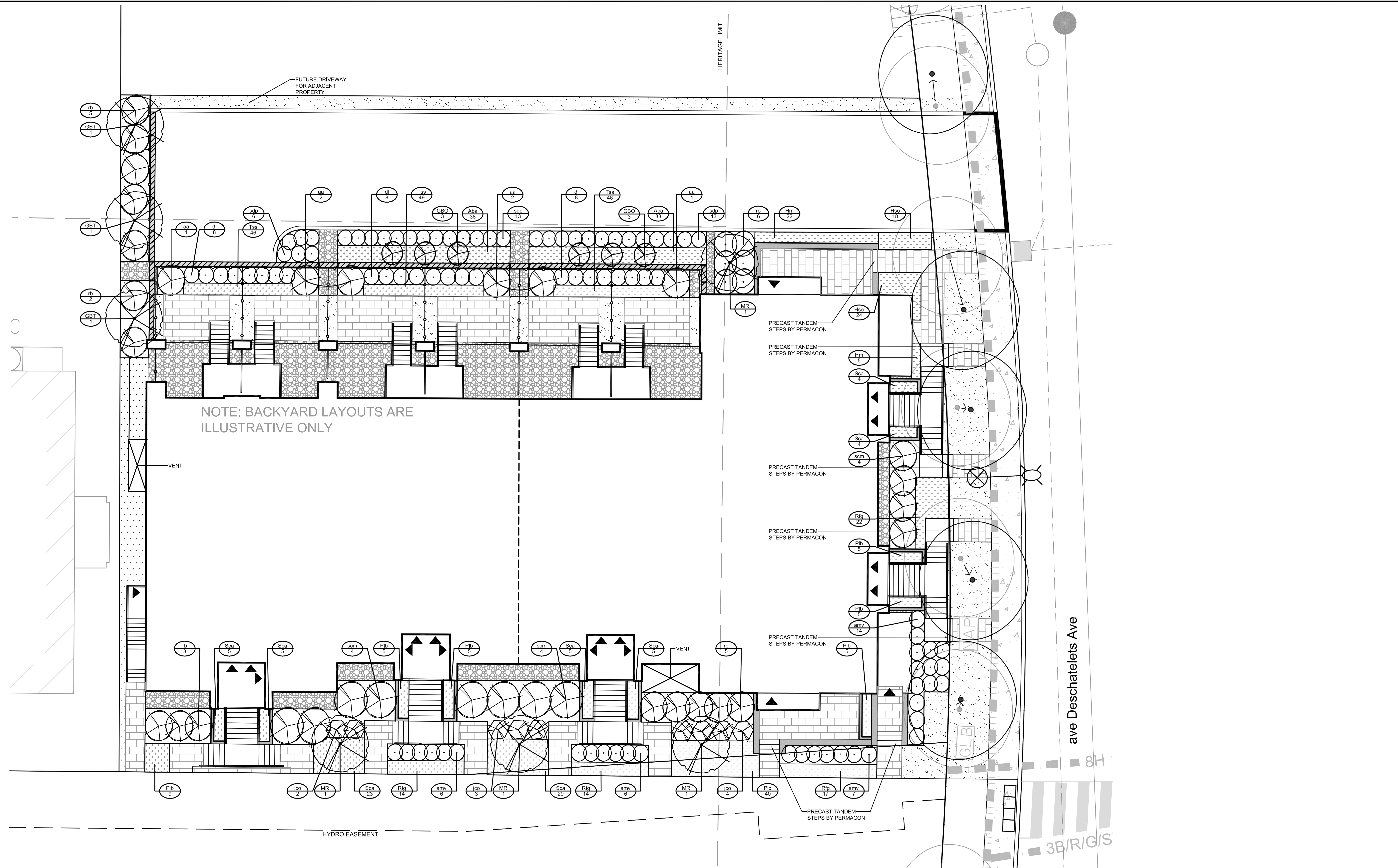


- ### PLANTING NOTES
- This drawing shall be read in conjunction with all relevant Architectural, Engineering, and related drawings and documents.
 - Refer to Engineering Drawings for Grading. Provide drainage as indicated in grading plan. Round all tops and toes of slopes, smoothly. Compact all areas to 95% Standard Proctor Density unless otherwise noted.
 - Refer to Architectural Drawings for site layout.
 - Refer to Engineering Drawings for site servicing.
 - Contractor must contact utility companies for locates prior to excavation or planting.
 - It is essential to use the plans and details in conjunction with the specifications and notes.
 - Existing trees to be retained shall be protected according to the contract detail and specifications.
 - Plant material shall be No. 1 Grade and shall comply with Canadian Standards for Nursery Stock (latest edition) published by the Canadian Nursery Landscape Association.
 - Use plant material with strong fibrous root system free of disease, defects or injuries, and structurally sound. Use trees with straight trunks, well and characteristically branched for species. Obtain approval from consultant of plant material at source prior to digging. All trees and shrubs shall be container grown, potted, W/B or B/B, as indicated on Plant List. Bare root planting will only be acceptable for certain species and as approved by the Landscape Architect.
 - Plant material substitutions shall not be permitted without the written approval from the consultant, with 48 hours notice, prior to shipping plant material.
 - Plant locations are schematic / approximate only. Contractor shall stake out locations on site for approval by the Landscape Architect prior to installation. The illustrated number of plants shown in the Planting Plan supersedes the estimated number in the Plant List. Contractor to report any discrepancies to the Landscape Architect prior to installation. Contractor will assume full responsibility if the Landscape Architect is not notified.
 - Shrubs, Perennials, Vines, and Groundcovers shall be planted in a continuous planting bed of 600mm depth with approved topsoil covered with 75mm depth shredded bark mulch.
 - Ensure trees are thoroughly watered following planting. Monitor material and ensure adequate moisture until acceptance.
 - In heavy clay or poorly drained soils, set root ball with root collar 75-100mm higher than finished grade.
 - Sod and/or seed areas to receive 150mm depth topsoil as specified. Sod shall be No. 1 Kentucky Bluegrass Sod grown from minimum mixture of 3 Kentucky Bluegrass cultivars. Quality and source shall comply with Canadian Standards for Nursery Stock, Section 17, (latest edition) published by the Canadian Nursery Landscape Association. Unless otherwise specified, turf is to be maintained by the contractor until a second cutting is accepted by the Landscape Architect.
 - Apply the following mineral fertilizer unless soil tests show other requirements: Sodded areas - (8-32-16) 8% Nitrogen, 32% Phosphorus, 16% Potash at a rate of 350kg/ha. - Planting Beds - (8-32-16) - 8% Nitrogen, 32% Phosphorus, 16% Potash as per manufacturer specifications.
 - Reinstatement all areas damaged or disturbed beyond the Limit of Work.

114025 - The Grove - Plant List

KEY	QTY	BOTANICAL NAME	COMMON NAME	SIZE	COND	SPACING
Deciduous Trees						
GB0	6	<i>Ginkgo biloba 'Obelisk'</i>	Obelisk Mordenhair Tree	125cm Ht	PT	As Shown
GBT	3	<i>Ginkgo biloba 'Tremona'</i>	Tremona Mordenhair Tree	250cm Ht	PT	As Shown
MR	4	<i>Malus 'Rink'</i>	Rink Crabapple	50mm Call	WB	As Shown
Coniferous Shrubs						
jo	9	<i>Juniperus horitz. 'Plumosa Compacta'</i>	Compact Andorra Juniper	40cm Spr	PT	1.00m O.C.
Deciduous Shrubs						
aa	6	<i>Amelanchier alnifolia</i>	Saskatoon Berry	100cm Ht	WB	As Shown
amv	33	<i>Aronia melanocarpa 'Viking'</i>	Viking Black Chokeberry	60cm Ht	PT	80cm O.C.
dl	24	<i>Diervilla lonicera</i>	Bush HoneySuckle	60cm Ht	PT	80cm O.C.
rb	15	<i>Rosa blanda</i>	Meadow Rose	60cm Ht	PT	150cm O.C.
ro	6	<i>Rubus odoratus</i>	Flowering Raspberry	60cm Ht	PT	120cm O.C.
scm	12	<i>Sambucus canadensis 'Maxima'</i>	Maxima Elderberry	60cm Ht	PT	180cm O.C.
ssp	32	<i>Spiraea japonica 'Double Play Candy Corn'</i>	Double Play Candy Corn Spirea	60cm Ht	PT	75cm O.C.
Perennials						
aba	76	<i>Aster laevis 'Blue Autumn'</i>	Blue Autumn Aster	1g	PT	50cm O.C.
hm	27	<i>Hemerocallis 'Marika'</i>	Marika Daylily	1g	PT	45cm O.C.
hsp	42	<i>Hemerocallis 'Stella D'Oro'</i>	Stella D'Oro Daylily	1g	PT	45cm O.C.
plb	74	<i>Perovskia atriplicifolia 'Lacey Blue'</i>	Lacey Blue Sage	1g	PT	50cm O.C.
rlg	67	<i>Ruebeckia fulgida 'Goldsturm'</i>	Goldsturm Coneflower	1g	PT	50cm O.C.
scs	60	<i>Salvia nemorosa 'Caradonna'</i>	Caradonna Blue Sage	1g	PT	50cm O.C.
tss	141	<i>Tiarella x 'Sugar and Spice'</i>	Sugar and Spice Foamflower	1g	PT	30cm O.C.



NOTE: THE POSITION OF ALL POLE LINES, CONDUITS, WATERMANS, SEWERS AND OTHER UNDERGROUND AND OVERGROUND UTILITIES AND STRUCTURES IS NOT NECESSARILY SHOWN ON THE CONTRACT DRAWINGS, AND WHERE SHOWN, THE ACCURACY OF THE POSITION OF SUCH UTILITIES AND STRUCTURES IS NOT GUARANTEED. BEFORE STARTING WORK, DETERMINE THE EXACT LOCATION OF ALL SUCH UTILITIES AND STRUCTURES AND ASSUME ALL LIABILITY FOR DAMAGE TO THEM.

**PRELIMINARY
NOT FOR
CONSTRUCTION**

NO.	REVISION	DATE	BY
1.	ISSUED FOR SITE PLAN CONTROL	APR 27/18	JP

SCALE: 1:100

FOR REVIEW ONLY

Checked: KW, JP, MT, JP, RJ

Approved: RJ

LOCATION: CITY OF OTTAWA, The Grove at Greystone Village

DRAWING NAME: LANDSCAPE PLAN

PROJECT NO.: 114025-00

REV # 1

DRAWING NO.: 114025-L-GV

NOVATECH Engineers, Planners & Landscape Architects