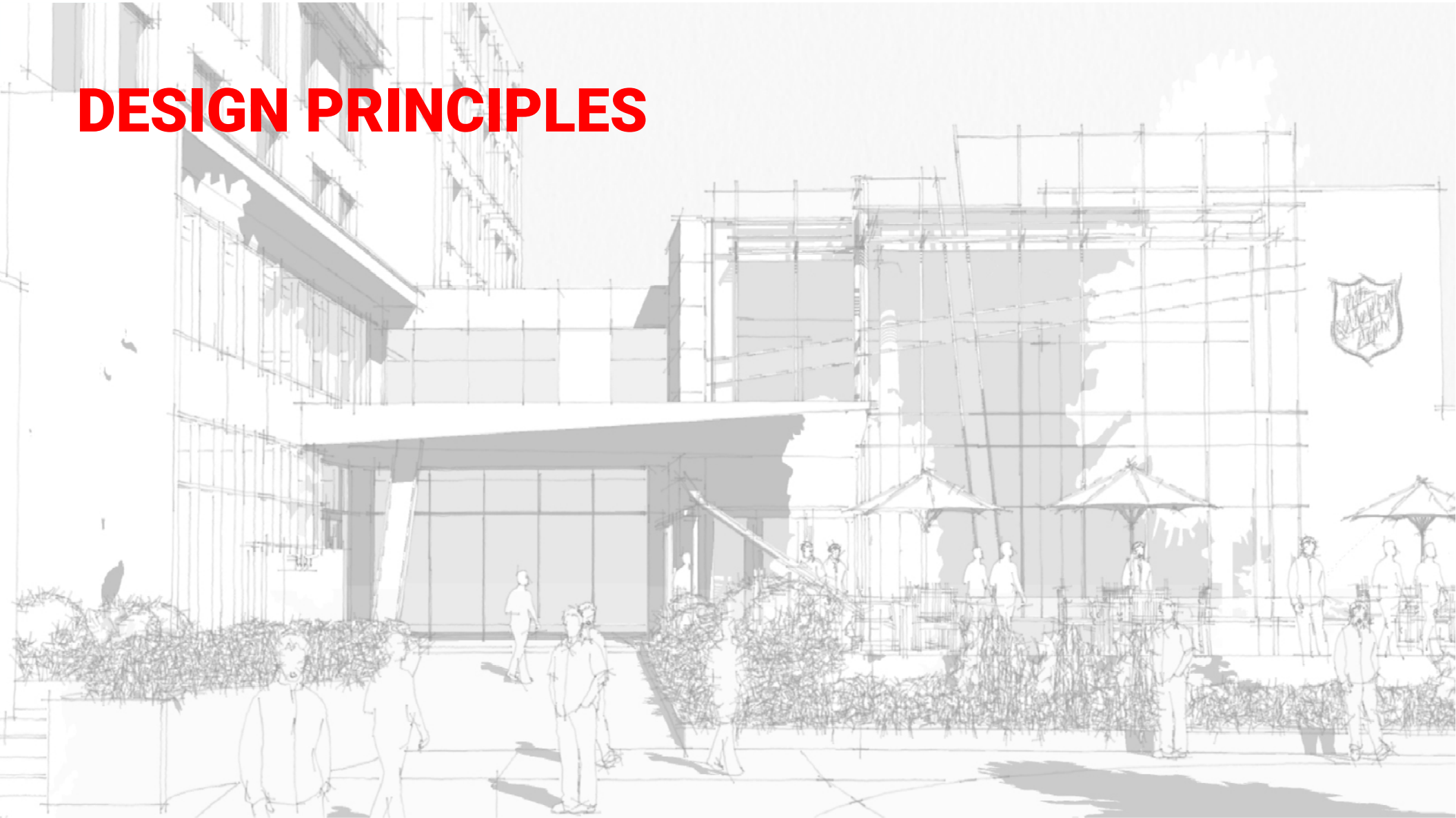




333 MONTREAL ROAD

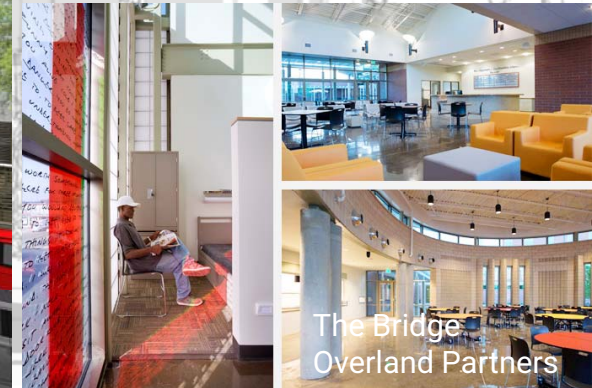


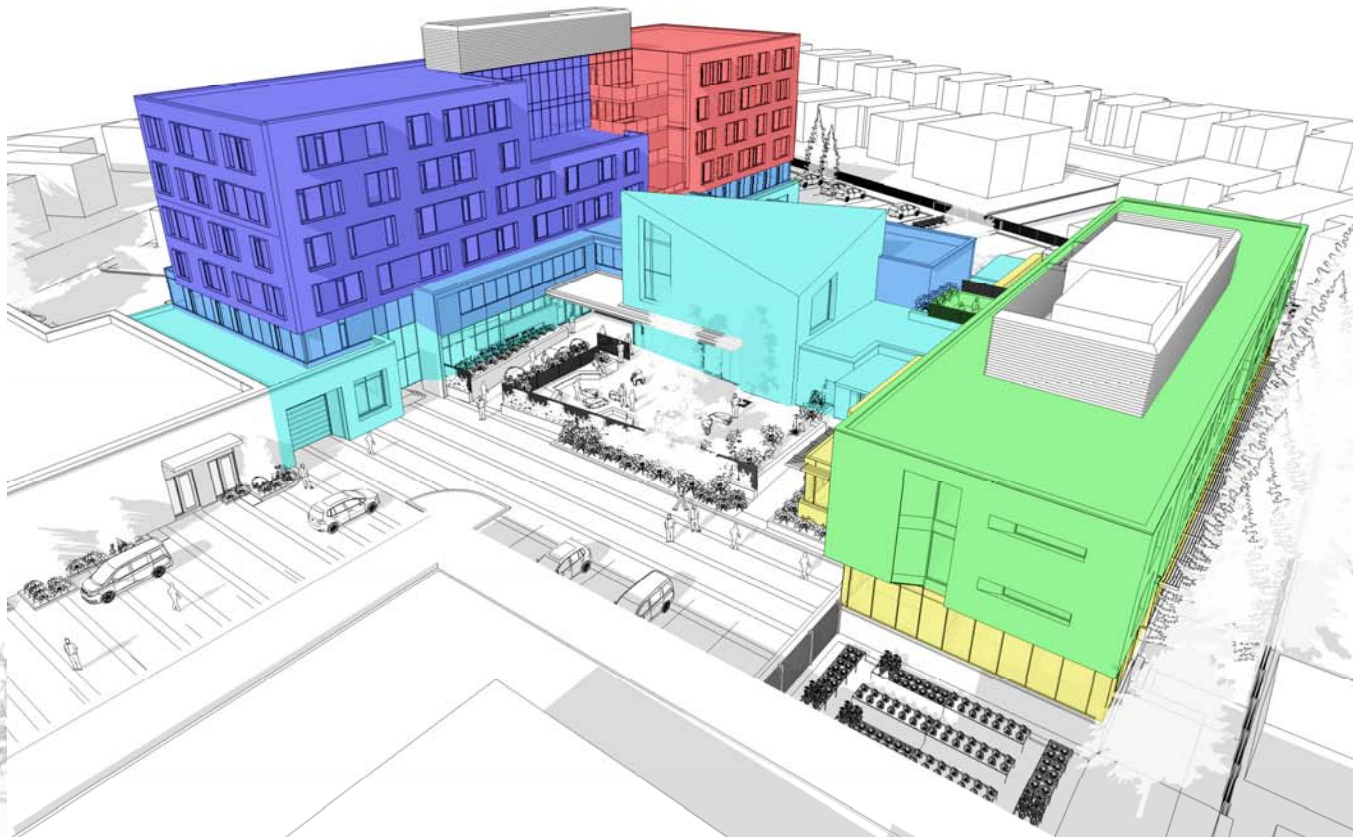
DESIGN PRINCIPLES



1. BUILD FOR DIGNITY AND PRIDE OF PLACE:

Design a facility that celebrates hope as a community landmark.





Distribution of Programs Répartition des Programmes

Emergency Shelter
Abris D'urgence (801 sq.m)

Accommodations
Hébergements

Residential Care Facility
Centre de Services Interne
(5,358 sq.m)

Working Men/Life Skills Residence
Résidence
Travailleurs/Compétances de vie

Special care
Soins Spécialisés

Day Program
Programme de Jour

Stabilization and Anchorage
Stabilisation et Ancre

Administration/Support
Administration et Personnel de
Soutien

2. PROVIDE A RANGE OF PROGRAM OPTIONS



3.SPACES TO FACILITATE COMMUNITY INTERACTION:

Design multipurpose spaces where clients and the general public can interact in a controlled and comfortable space.

4. SUPERVISED ACCESS:

Design the main access corridor from Montreal Road and the entry court to be both inviting and secure pedestrian friendly spaces.



5. SECURE & PRIVATE OUTDOOR SPACES:

Design bright and airy client centred outdoor terraces and gardens that are secure and private.

Bud Clark Commons
Holst Architecture



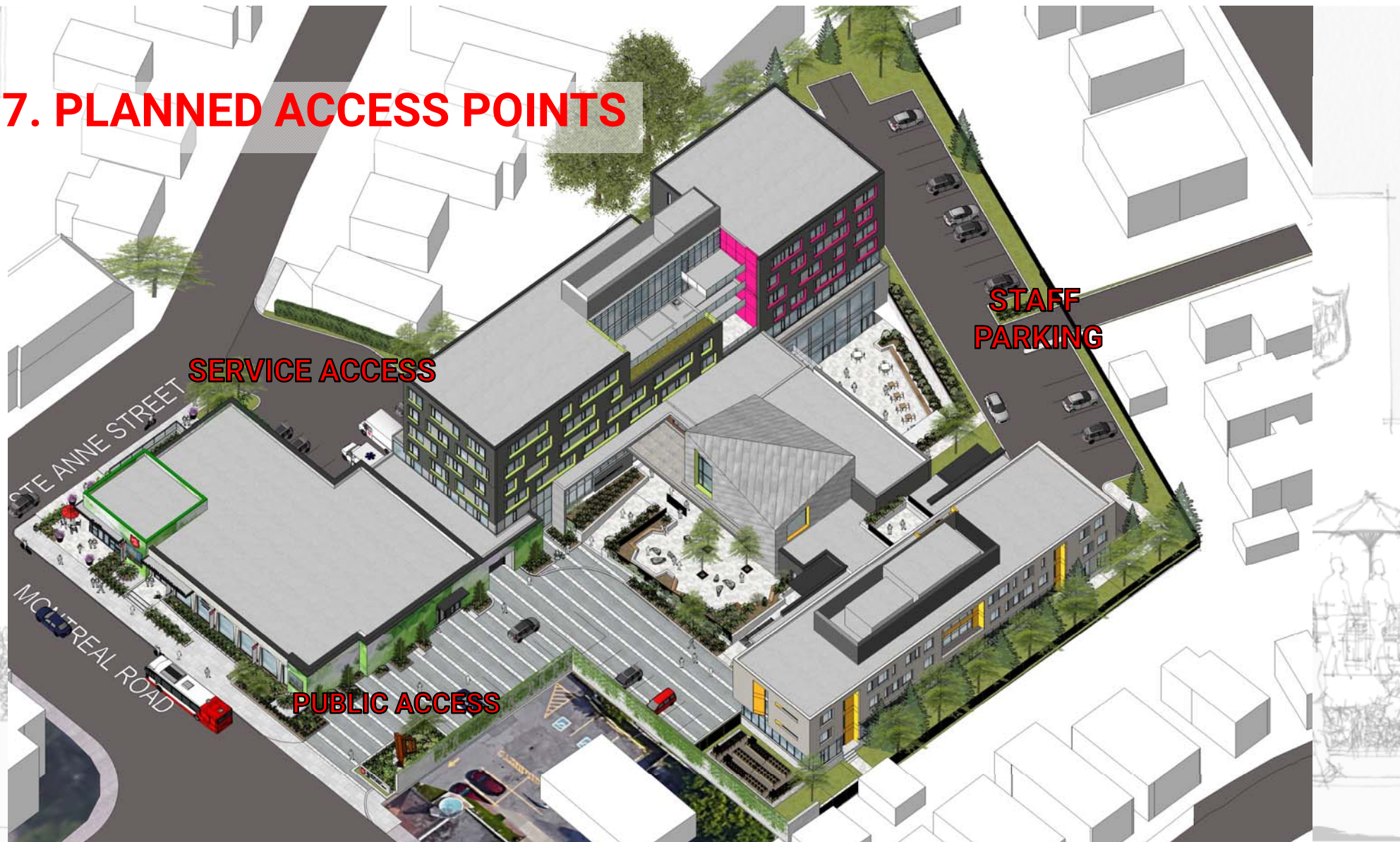


6. DESIGN TO PRESERVE PRIVACY

- Focus design on internal courtyards
- Minimize overlooking into neighbouring yards
- Isolate outdoor activity areas to minimize noise to neighbours
- Provide landscape buffer at perimeter of site



7. PLANNED ACCESS POINTS



8. DESIGN STREETS FOR PEOPLE:

Design the streetscape to encourage comfortable and secure community interaction while stimulating the development of a traditional mainstreet



