



APPROVED REFUSED
THIS ____ DAY OF _____, 20__

JEFF MCEWEN, P.ENG, MANAGER
DEVELOPMENT REVIEW EAST,
PLANNING, INFRASTRUCTURE AND ECONOMIC
DEVELOPMENT DEPARTMENT, CITY OF OTTAWA

No.	ISSUE	DATE
5	REVISED FOR SPA	MAR 28/18
4	REVISED FOR SPA	MAR 06/18
3	ISSUED FOR REVIEW	FEB 13/18
2	ISSUED FOR SPA	NOV 01/17
1	ISSUED FOR REVIEW	SEP 20/17

NOTE: This drawing is the property of the Architect and may not be reproduced or used without the expressed consent of the Architect. The contractor is to verify all dimensions and conditions on the project and to report any discrepancies to the Architect prior to commencing work. These drawings are not to be used for construction purposes unless indicated as "Issued for construction".

CLIENT:
**SmartREIT
(ORLEANS II) Inc.
And Mer Bleue
Shopping Centres
Limited**

PROJECT:
**Building N
2025 Mer Bleue Rd.
Orleans, ON**

SHEET TITLE:
**BUILDING
ELEVATIONS**

PROJECT NO.
7034

SCALE: 1/8"=1'-0"	DATE: SEE REV.
DRAWN: KS	SHEET NO: A3
CHECKED: GP	
FILE NO. 7034	

- ### LEGEND
- 1 DECORATIVE LIGHT FIXTURE
MOUNT TO 3/4" EXTERIOR GRADE PLYWOOD CONCEALED BEHIND WALL FINISH
 - 2 PREFINISHED METAL CANOPY - VICWEST
COLOUR VW GC-56066
 - 3 DRIVE-THRU GLAZED WINDOW
CLEAR LOW E GLAZING IN BLACK ANODIZED THERMALLY BROKEN ALUMINIUM
FRAMES (UNLESS OTHERWISE NOTED)
 - 4 OPAQUE FILMED GLAZED WINDOWS (OP)
OPAQUE FILMED GLAZING IN BLACK ANODIZED THERMALLY BROKEN ALUMINIUM
FRAMES (UNLESS OTHERWISE NOTED)
 - 5 PREFINISHED METAL SCUPPER - VICWEST
COLOUR VW GC-56066
 - 6 CLEAR GLAZED WINDOWS (GL)
CLEAR LOW E GLAZING IN BLACK ANODIZED THERMALLY BROKEN ALUMINIUM
FRAMES (UNLESS OTHERWISE NOTED)
 - 7 PAINTED HOLLOW METAL INSULATED DOOR
COLOUR TO MATCH ADJACENT WALL
 - 8 PREFINISHED METAL DISPLAY FLIP FRAME
C/W 3/4" EXTERIOR GRADE PLYWOOD BEHIND E.I.F.S. FOR FRAME
SUPPORT, (FIRE RATED WHERE APPLICABLE). FINAL CONNECTION BY TENANT
ELECTRICAL CONTRACTOR TYP. COLOUR - TBD
 - 9 PREFINISHED METAL SIDING
COLOUR - CEDAR WOOD IMITATION HARRY WOOD - TORREFIED
 - 10 E.I.F.S. - LES ENDUITS STEF - SANDPEBBLE
COLOUR: MATCH-9368 RED
 - 11 E.I.F.S. - LES ENDUITS STEF - SANDPEBBLE
COLOUR: 6206-31 BEIGE
 - 12 E.I.F.S. - LES ENDUITS STEF - SANDPEBBLE
COLOUR: 6207-73 CHARCOAL
 - 13 STONE SILL - CENTRE DE PIERRES MIRABEL
MODEL: ST-MARC LIMESTONE
 - 14 CONCRETE BLOCK - PERMACON
MODEL PIERRE LAFIT, NEWPORT GREY, GREY MORTAR
 - 15 SIGNAGE:
C/W 3/4" EXTERIOR GRADE PLYWOOD BEHIND E.I.F.S. FOR SIGNAGE SUPPORT,
(FIRE RATED WHERE APPLICABLE). FINAL CONNECTION BY TENANT
ELECTRICAL CONTRACTOR TYP.
 - 16 PREFINISHED METAL CAP FLASHING - VICWEST
COLOUR VW GC-56066 TILE RED
 - 17 RESERVED.
 - 18 SPANDREL PANEL
GLASS SPANDREL WITH INSULATED METAL BACK PAN IN BLACK ANODIZED
THERMALLY BROKEN ALUMINIUM FRAMES - PPG, BLACK MAGIC PPG1001-7
 - 19 PREFINISHED METAL FLASHING - VICWEST
COLOUR GC-56072 CHARCOAL
 - 20 RECESSED LIGHT FIXTURE

LEGEND
N.T.S.



1 SOUTH ELEVATION
N.T.S.



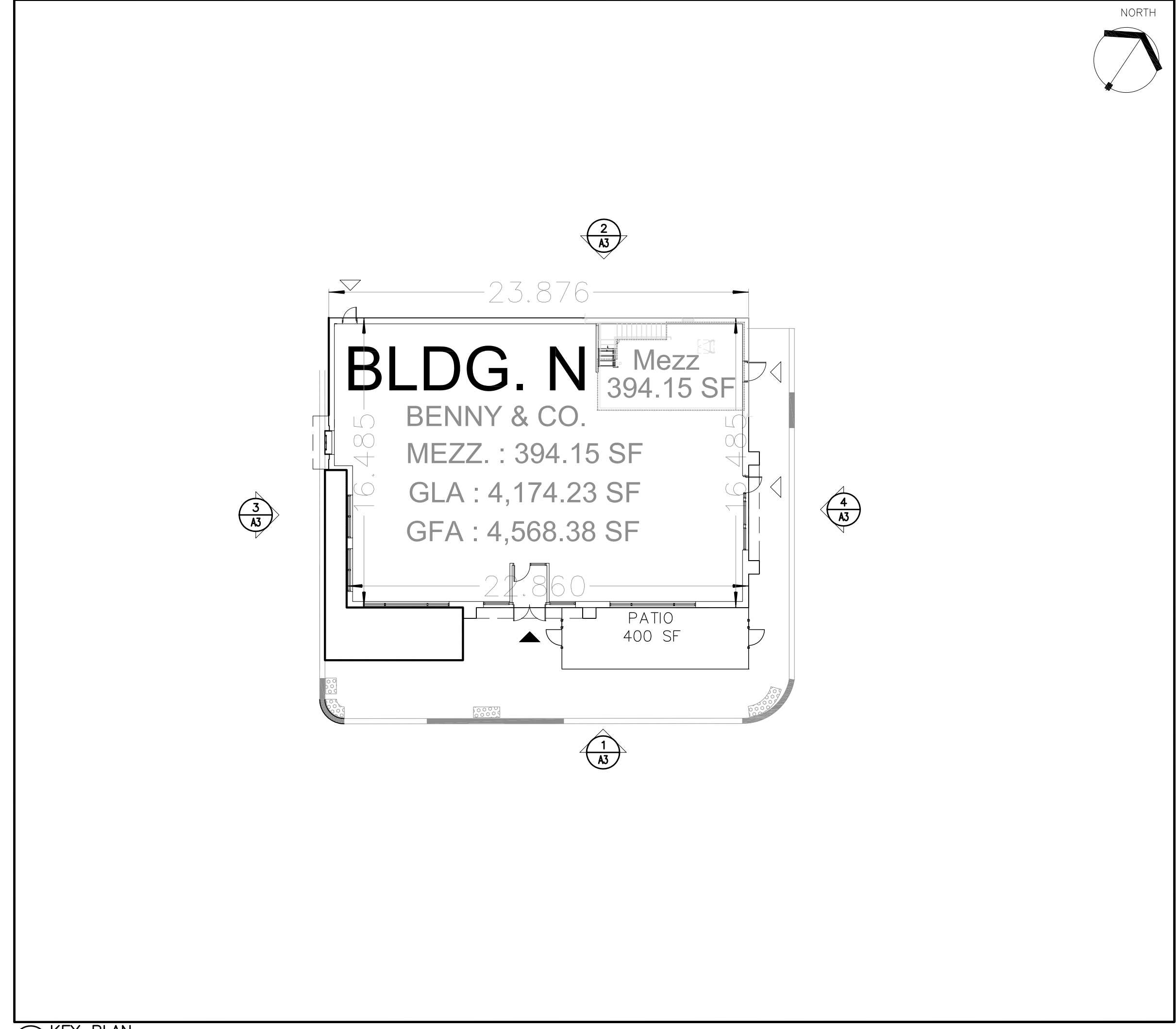
2 NORTH ELEVATION
N.T.S.



3 WEST ELEVATION
N.T.S.



4 EAST ELEVATION
N.T.S.



5 KEY PLAN
N.T.S.

u:\7034 - SmartREIT - Bldg N, Orleans\02 DWG\SPA Elevations\7034 - Bldg N Elevations 180327.dwg Mar 28, 2018 - 1:27 pm