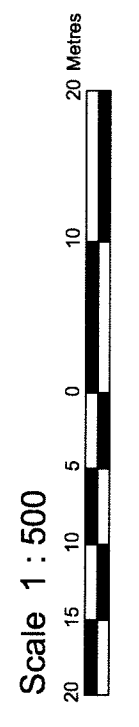


TOPOGRAPHICAL SKETCH OF

PART OF LOT 7  
CONCESSION 2  
Geographic Township of Huntley  
CITY OF OTTAWA

Prepared by Annis, O'Sullivan, Vollebek Ltd.  
Amended July 12, 2017 - Added Additional Elevations and  
30m Setback.  
Amended January 5th, 2018 - Added Top of Slope Setback and  
High Water Mark.  
Amended February 28th, 2018 - Added Ties to Centreline of  
Road



Metric  
DISTANCES SHOWN ON THIS PLAN ARE IN METRES AND  
CAN BE CONVERTED TO FEET BY DIVIDING BY 0.3048

Feb. 28, 2018  
Date  
Richard K. Gauthier O.L.S.

Notes & Legend

- Denotes
- Deciduous Tree
  - UP Rail Fence
  - AN UHPL Pole
  - AN Anchor
  - LS Light Standard
  - Diameter
  - Location of Elevations
  - Top of Retaining Wall
  - Centreline
  - Overhead Wires
  - Property Line
  - Corrugated Steel Pipe
  - Concrete Pipe
  - Invert
  - Top of Pipe
  - TOS Top of Slope
  - BOS Bottom of Slope

Bearings are given and are referred to the Central Meridian of MTN Zone 9  
(78°30' West Longitude) NAD-83 (original).

SITE AREA = 3.199 hectares

BOUNDARY INFORMATION COMPILED FROM PLAN 4R-15819.

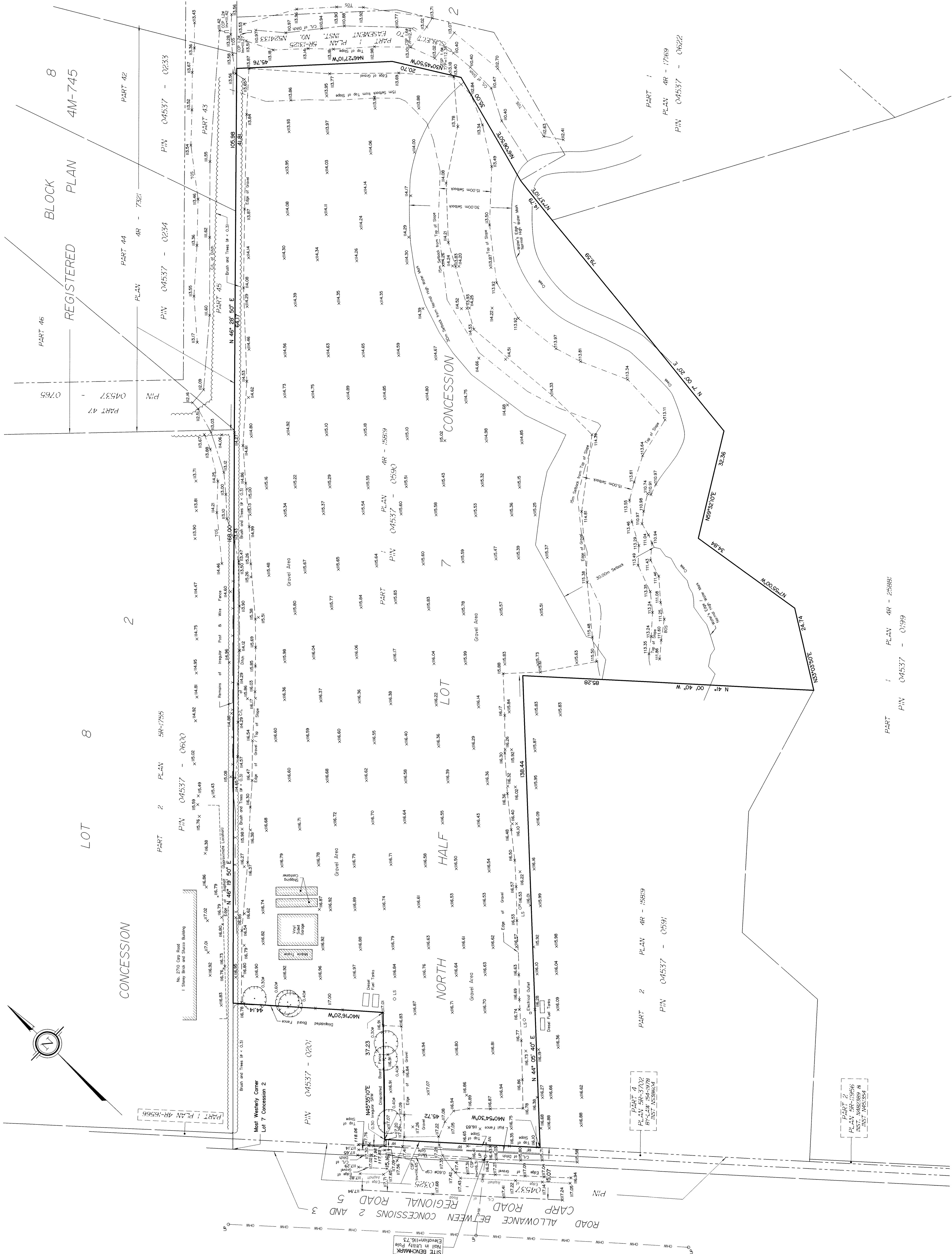
ELEVATION NOTES

1. Elevations shown are geodetic and are referred to the CGVD28 geodetic datum.
2. It is the responsibility of the user of this information to verify that the job benchmark has not been altered or disturbed and that its relative elevation and description agrees with the information shown on this drawing.

UTILITY NOTES

1. This drawing cannot be accepted as acknowledging all of the utilities and it will be the responsibility of the user to contact the respective utility authorities for
2. Only visible surface utilities were located.
3. A field location of underground plant by the pertinent utility authority is mandatory before any work involving breaking ground, probing, excavating etc.

© Annis, O'Sullivan, Vollebek Ltd. 2017. THIS PLAN IS PROTECTED BY COPYRIGHT.  
**ANNIS, O'SULLIVAN, VOLLEBEK LTD.**  
14 Concession Gate, Suite 900  
Windsor, Ont. N2E 7S9  
Phone: (613) 925-2222  
Fax: (613) 925-2222  
Land Surveyors  
Ontario  
[Reg. No. 9554-17, Reg. 81, 1.1, 2, 2.1, 1.5]



PART 1 PLAN 4R-15819  
PART 2 PLAN 4R-15819  
PART 3 PLAN 4R-15819  
PART 4 PLAN 4R-15819