

CLIENT: **urban structure**
 URBAN STRUCTURE PROPERTIES LTD.
 3528 LEITRIM ROAD
 OTTAWA, ONTARIO K1G 3M4
 T. 613.822.7028
 www.UrbanStructureProperties.com

CONSULTANTS:
 ARCHITECTS: **P2 concepts**
 739 RIDGEWOOD AVE., UNIT 201
 OTTAWA, ONTARIO, K1V 6M8

CIVIL ENGINEERS:
 T.L. MAK ENGINEERING CONSULTANTS LTD.
 140 YONGEVILLE DRIVE
 OAKLEAF, ONTARIO K1C 6Z7
 TEL: (613) 877-5916

LEGEND

- EXISTING TREE TO REMAIN
- TREE PROTECTION FENCE
- PROPOSED SOD
- PROPOSED DECIDUOUS TREE
- PROPOSED ORNAMENTAL GRASSES/ PERENNIALS
- PROPOSED PEASTONE

APPROVED REFUSED

THIS _____ DAY OF _____, 20____

DERRICK MOODIE,
 MANAGER, DEVELOPMENT REVIEW - WEST,
 PLANNING, INFRASTRUCTURE AND ECONOMIC
 DEVELOPMENT DEPARTMENT, CITY OF OTTAWA

2	REVISED PER CITY COMMENTS	11/15/2017	ML	JL
1	ISSUED FOR SITE PLAN APPLICATION	07/19/2017	ML	JL

JAMES B. LENNOX & ASSOCIATES INC.
 LANDSCAPE ARCHITECTS
 3332 CARLING AVE. OTTAWA, ONTARIO K2H 5A8
 Tel: (613) 722-5168 Fax: (866) 343-3942

PROJECT
 PROPOSED 3 STOREY 8 UNIT DWELLING
 351 CROYDON AVENUE OTTAWA, ONTARIO

DRAWING
 TREE CONSERVATION REPORT &
 LANDSCAPE PLAN

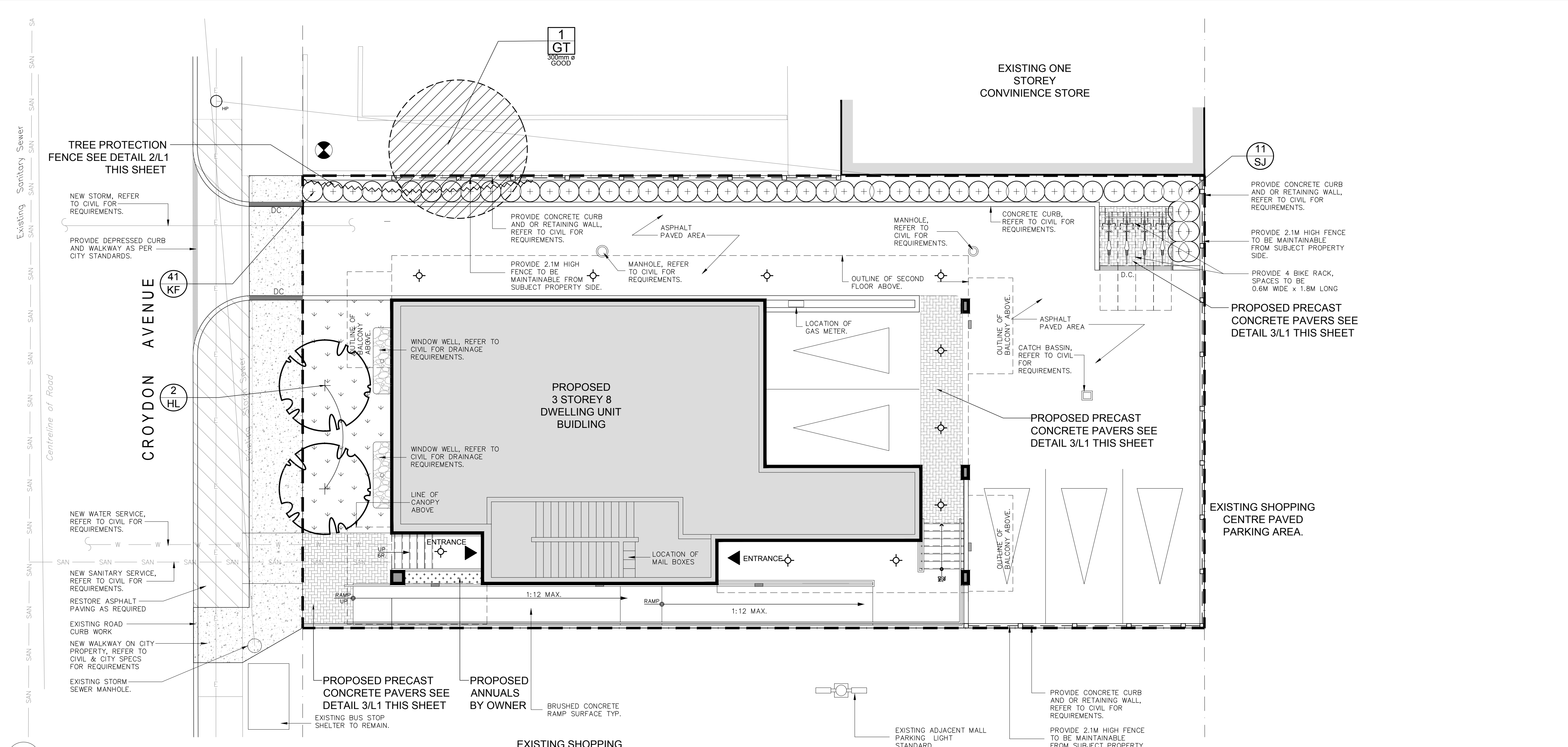
SCALE
 AS SHOWN

START DATE
 MAY 2017

PROJECT NO.

DRAWING NO.
L.1

PLOT SIZE ARCH-D

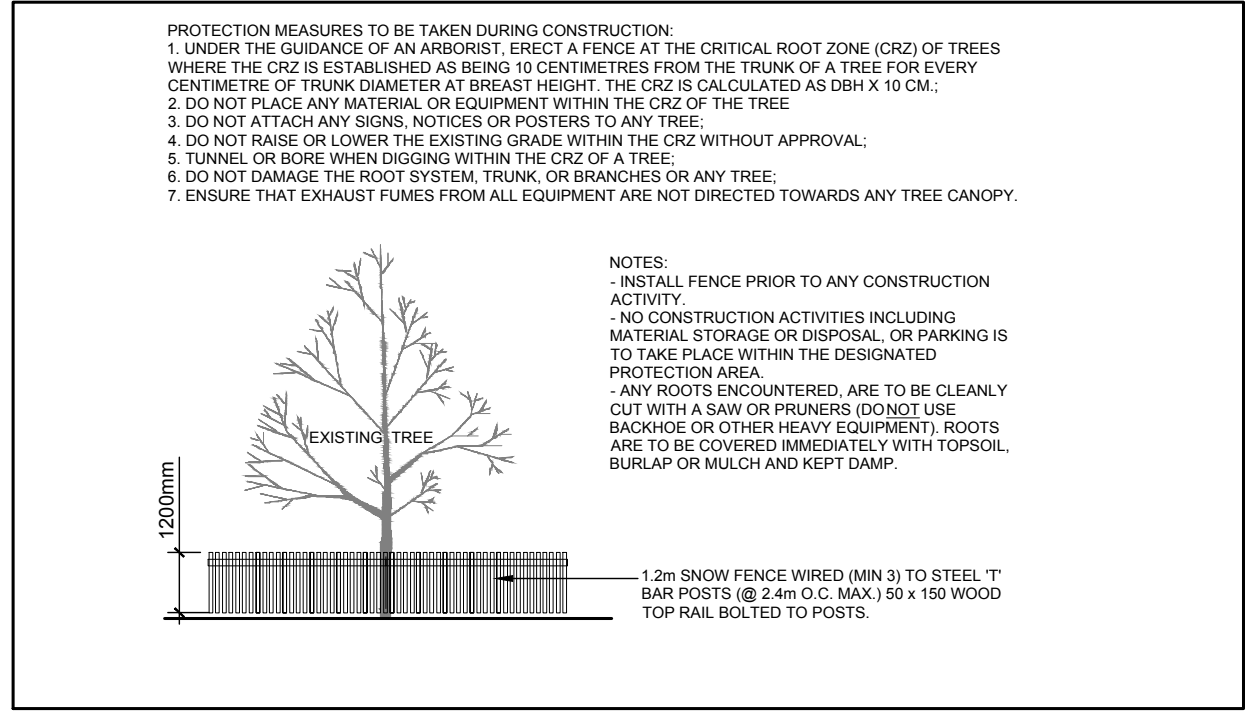


1
L.1 TREE CONSERVATION REPORT & LANDSCAPE PLAN
 SCALE: 1:75

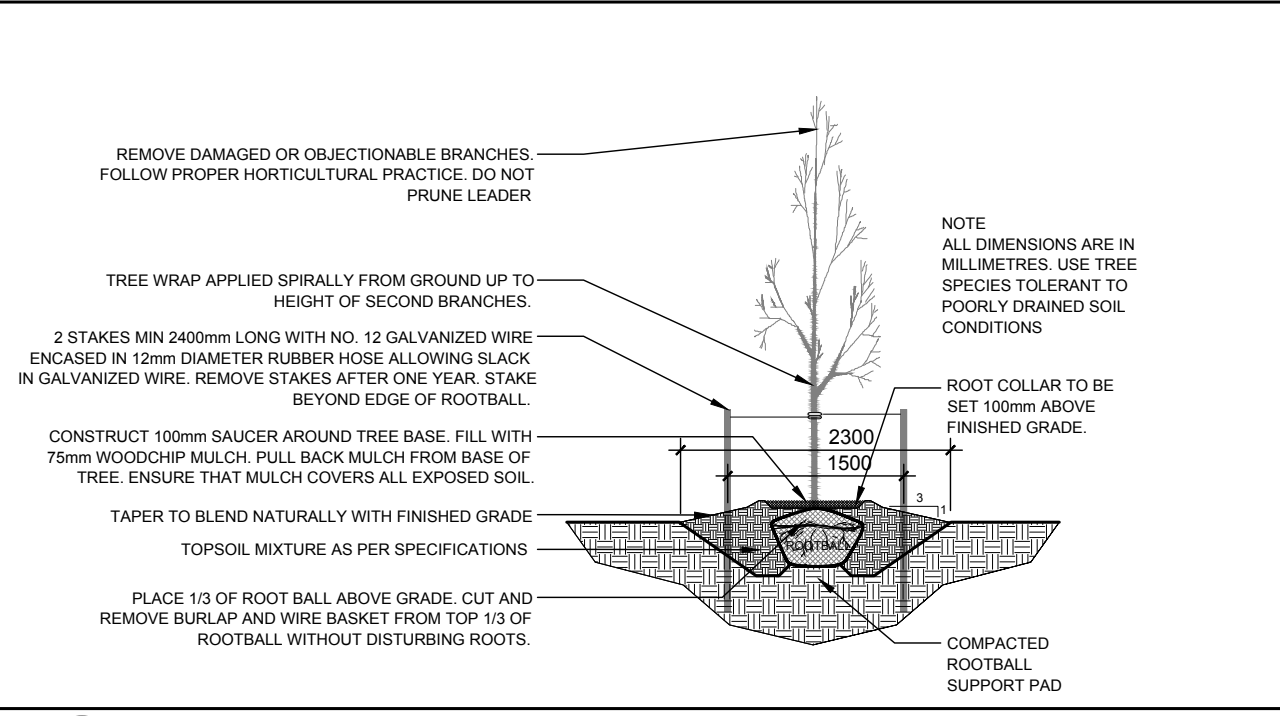
EXISTING TREE LIST						
KEY	QTY	BOTANICAL NAME	COMMON NAME	SIZE	CONDITION	REMARKS
TREES						
GT	1	Gleditsia triacanthos	Honeylocust	300mm ø	GOOD	To Remain

PROPOSED PLANT LIST						
KEY	QTY	BOTANICAL NAME	COMMON NAME	SIZE	CONDITION	REMARKS
TREES						
HL	2	Gleditsia triacanthos 'Draves'	Street Keeper Honey Locust	60mm ø	B&B	See Plan
SHRUBS						
SJ	11	Hypericum kalmianum	St. John's Wort	600mm Ht.	Potted	Space 800mm O.C.
ORNAMENTAL GRASSES						
KF	41	Calamagrostis x acutiflora 'Karl Foerster'	Feather Reed Grass	250 mm Pot.	Potted	Space 800mm O.C.

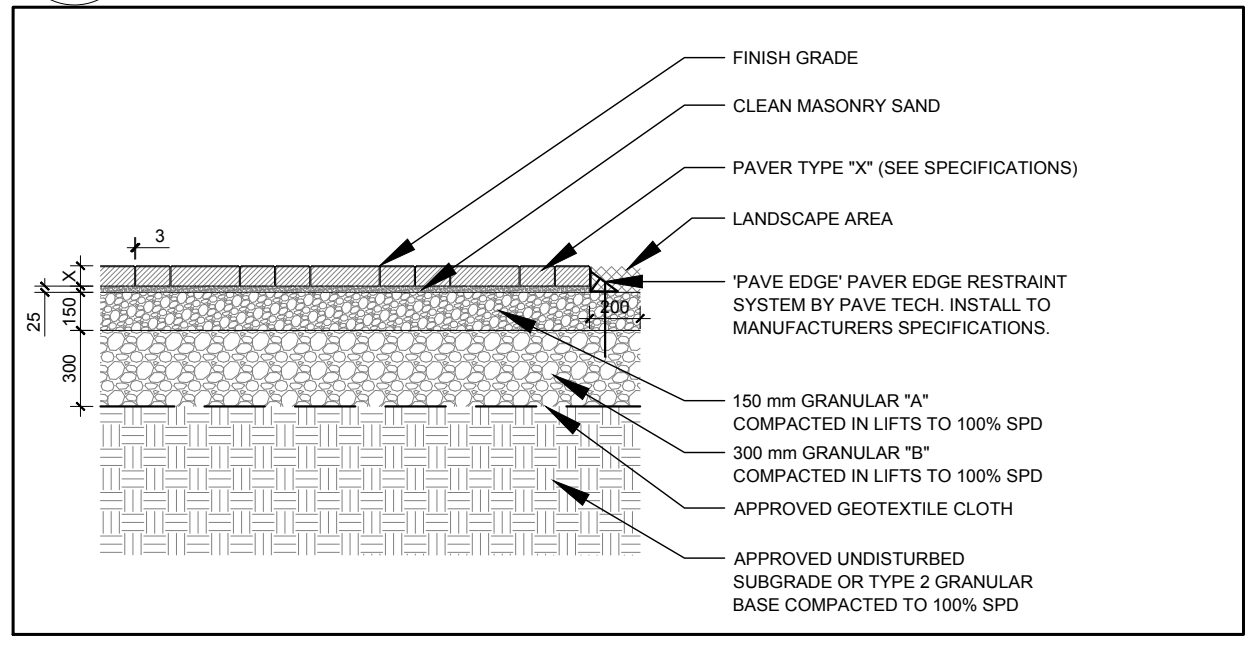
- GENERAL NOTES:**
- It is the responsibility of the appropriate contractor or official to report any errors, omissions or discrepancies on this plan with actual site conditions to the Landscape Architect before proceeding with construction.
 - The contractor is to notify all utility companies and authorities prior to any excavation and ascertain locations of underground services.
 - The contractor is to reinstate all areas and items damaged as a result of construction activity.
 - The contractor is to comply with all pertinent codes and by-laws.
 - The contractor is to maintain a positive surface run-off throughout the entire construction period.
 - The Landscape Architect is not responsible for subsurface conditions.
 - The contractor is to identify all existing trees to remain on site with the Landscape Architect prior to construction.
 - The contractor is to stake the proposed location of all plant material in conjunction with the Landscape Architect prior to excavation.
 - Minimum distances for selected deciduous trees are as follows:
 - Building Foundations 7.5m
 - Sidewalks 1.5m
 - Public Streets 2.5m
 - Underground Infrastructure 2.0m
 - All trees within 1m of underground utility trenches are to be excavated by hand.
 - Remove all protective wrapping from tree trunks after installation.
 - Staking of trees shall only be performed if necessary.
 - Ensure that mulch is pulled back a min. distance of 75mm from base of tree trunk.



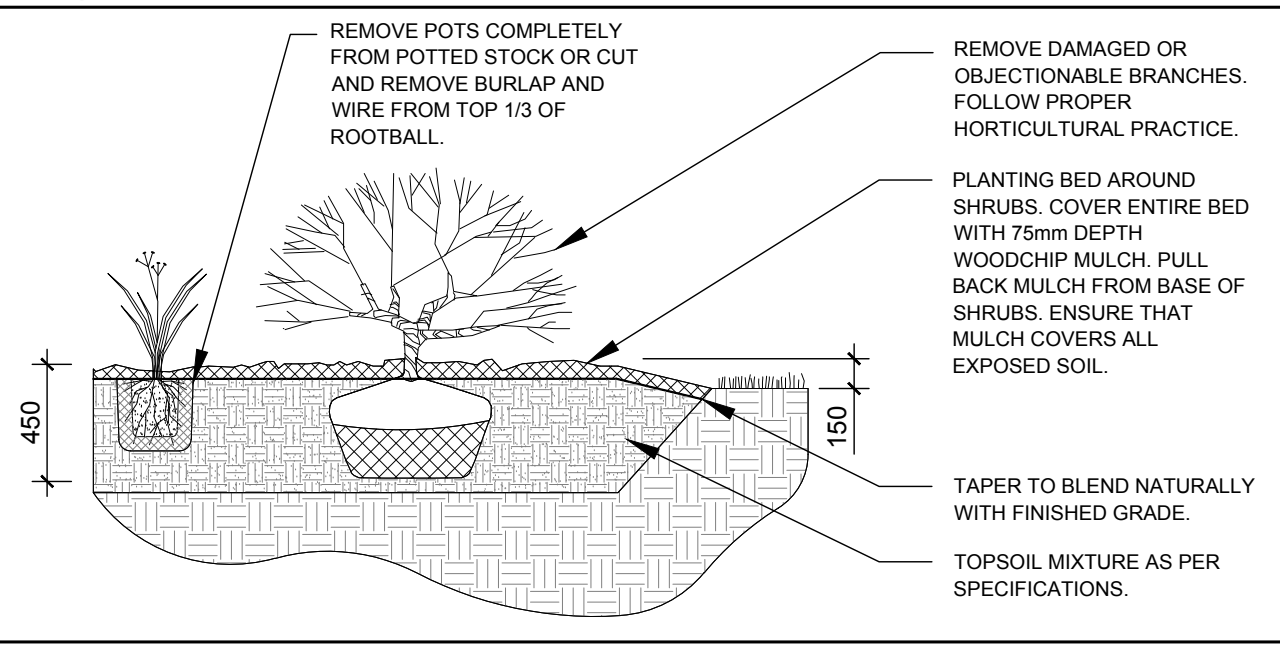
2
L.1 TREE PROTECTION FENCE
 SCALE: NTS



4
L.1 DECIDUOUS TREE PLANTING
 SCALE: NTS



3
L.1 PRECAST CONCRETE PAVERS
 SCALE: NTS



5
L.1 SHRUB/ ORNAMENTAL GRASS PLANTING
 SCALE: NTS

D07-12-17-0102