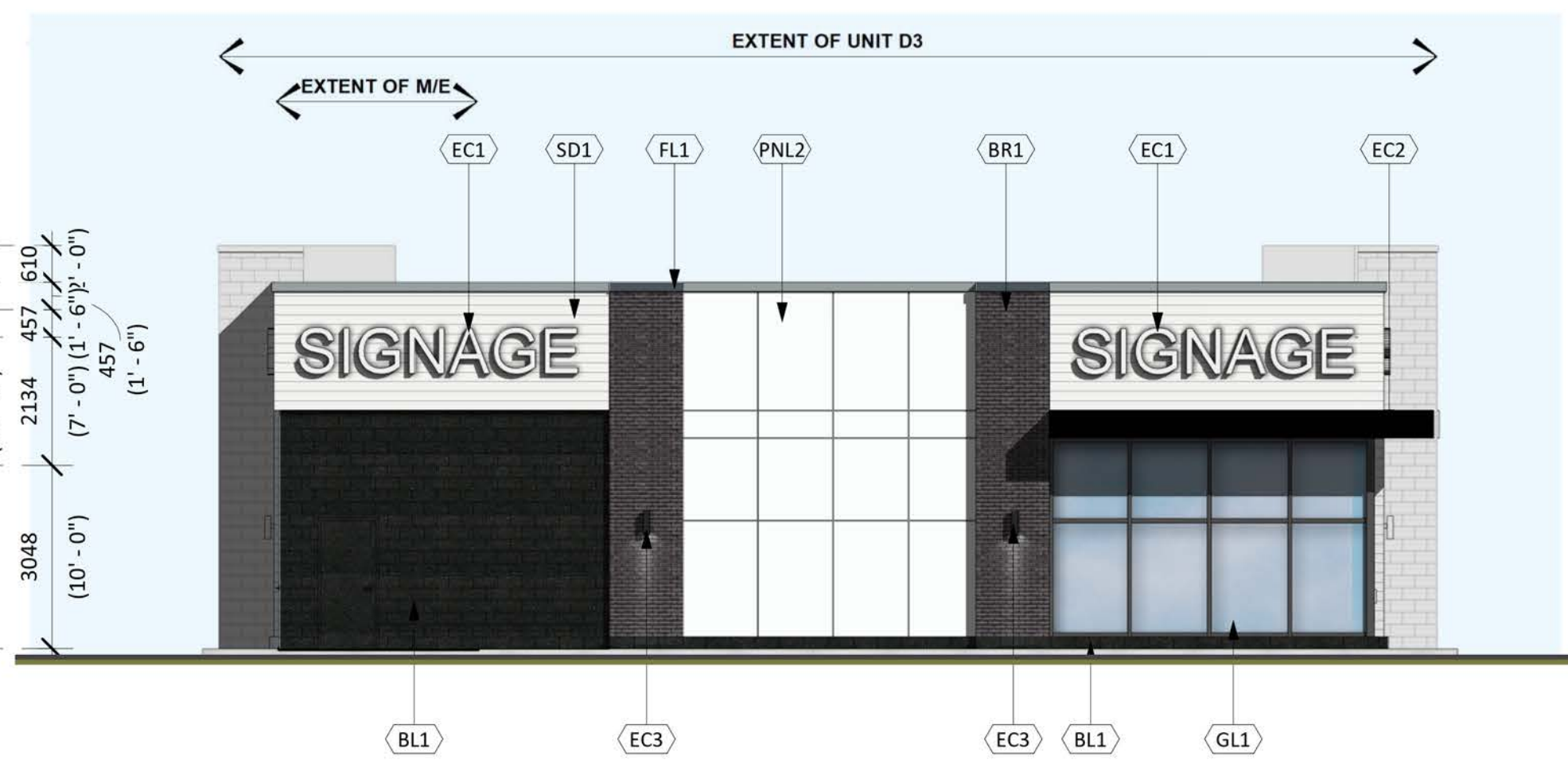
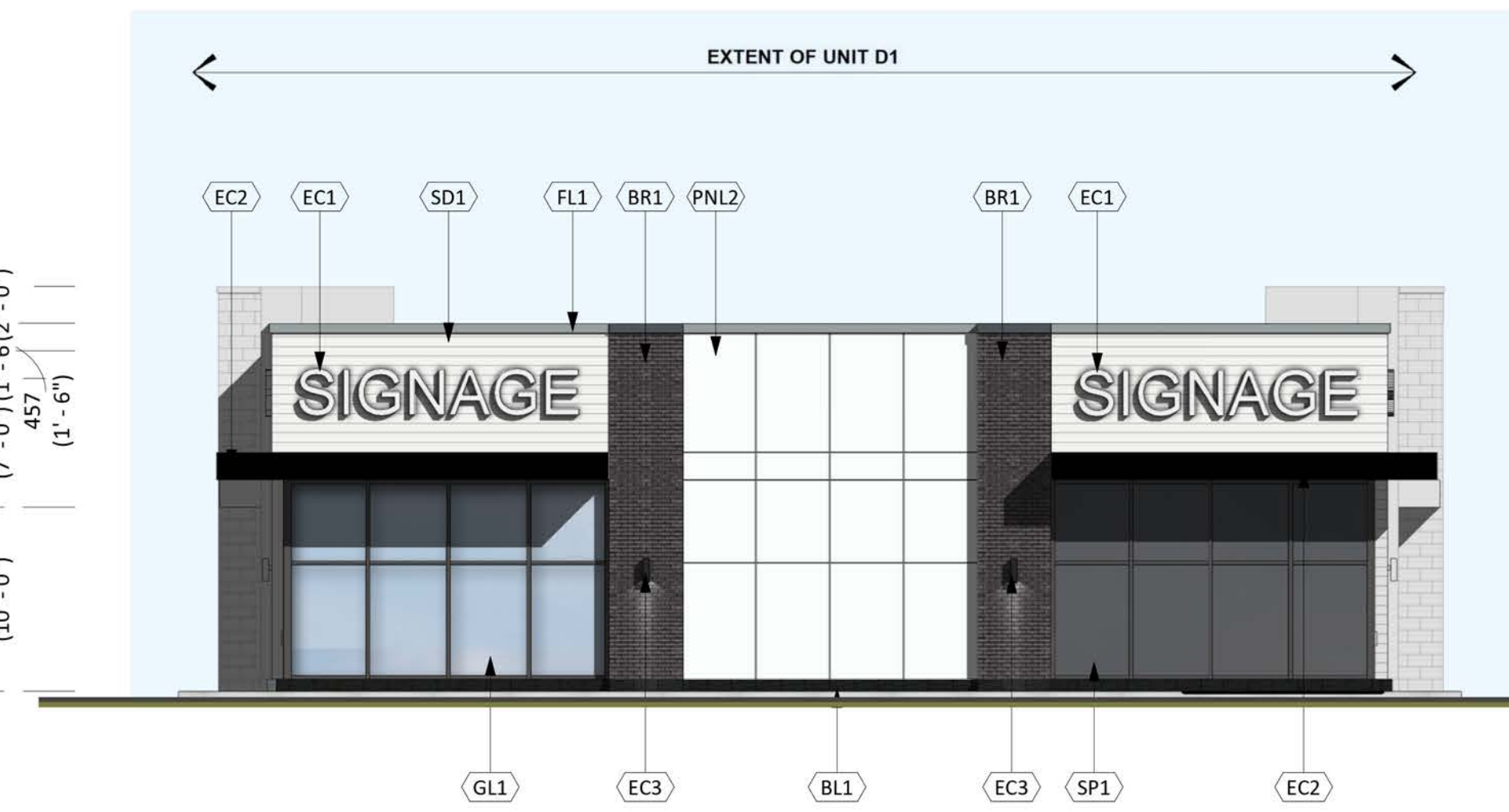


- T/O HIGH PARAPET 22' - 0"
- T/O MID PARAPET 20' - 0"
- T/O LOW PARAPET 18' - 6"
- T/O STEEL 17' - 0"



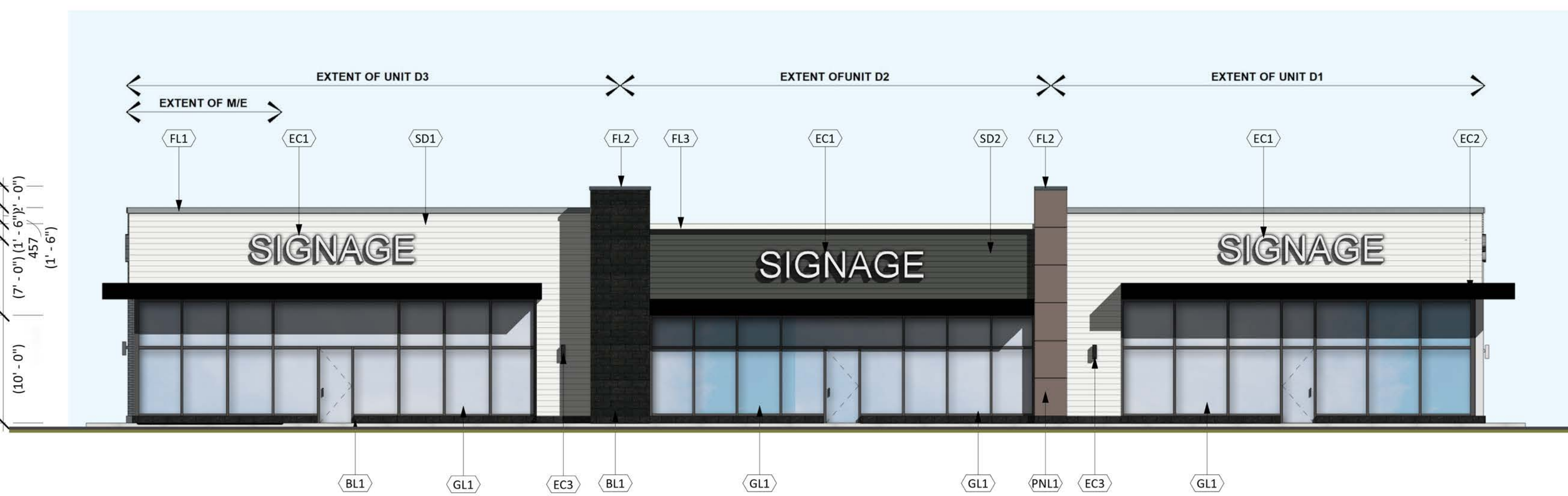
1 SOUTH ELEVATION
A2-6.1 1:100

- T/O HIGH PARAPET 22' - 0"
- T/O MID PARAPET 20' - 0"
- T/O LOW PARAPET 18' - 6"
- T/O STEEL 17' - 0"



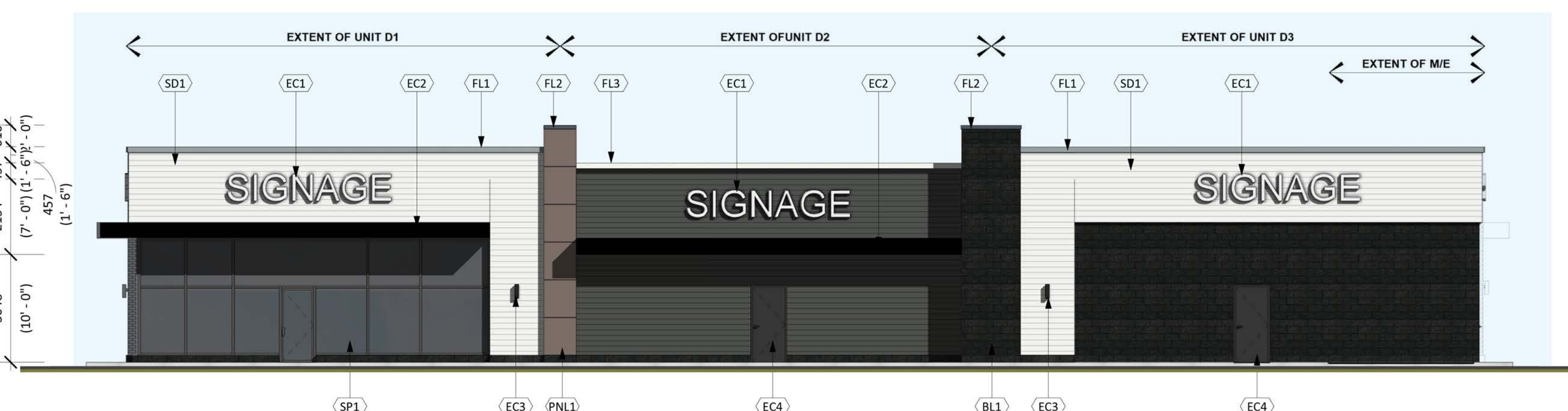
2 NORTH ELEVATION
A2-6.1 1:100

- T/O HIGH PARAPET 22' - 0"
- T/O MID PARAPET 20' - 0"
- T/O LOW PARAPET 18' - 6"
- T/O STEEL 17' - 0"



3 EAST ELEVATION
A2-6.1 1:100

- T/O HIGH PARAPET 22' - 0"
- T/O MID PARAPET 20' - 0"
- T/O LOW PARAPET 18' - 6"
- T/O STEEL 17' - 0"



4 WEST ELEVATION
A2-6.1 1:100

| EXTERIOR FINISH & COMPONENT SCHEDULE | | |
|--------------------------------------|---|----------------|
| MATERIAL | DESCRIPTION | AREA |
| BL1 | SHOULDRICE BLOCK & SILLS: SEE MANUFACTURER'S STANDARD SPECIFICATIONS MORTAR, CONTROL JOINT AND CAULKING COLOURS TO MATCH MASONRY UNIT COLOUR COLOUR: COLBY (TAPESTRY FINISH) | 1450 SF |
| BR1 | INTERSATE BRICK COLOUR: COAL | 310 SF |
| FL1 | DECORATIVE MOULDING: ALPOLIC SOLID COLOUR METAL CORNICE MOULDING TO MATCH PROFILES INDICATED ON DRAWINGS COLOUR: 4-AGT-30 ALUMINUM GREY (G30) | NOT APPLICABLE |
| FL2 | DECORATIVE MOULDING: ALPOLIC SOLID COLOUR METAL CORNICE MOULDING TO MATCH PROFILES INDICATED ON DRAWINGS COLOUR: 4-BNT-30 BONE WHITE | NOT APPLICABLE |
| FL3 | DECORATIVE MOULDING: ALPOLIC SOLID COLOUR METAL CORNICE MOULDING TO MATCH PROFILES INDICATED ON DRAWINGS COLOUR: 4-BGY-50 BGY GREY | NOT APPLICABLE |
| GL1 | GLAZED DOORS & WINDOWS: CLEAR LOW E GLAZING IN CLEAR ANODIZED THERMALLY BROKEN ALUMINUM FRAMES (UNLESS OTHERWISE NOTED) | 1550 SF |
| PNL1 | AL-13 COLOUR: MOCHA CAULKING: TO MATCH | 230 SF |
| PNL2 | AL-13 COLOUR: WHITE CAULKING: TO MATCH | 770 SF |
| SD1 | PREPAINTED GALVANIZED SHEET METAL SIDING VICWEST 24 GA. COLOUR: GQ 16161 CAMBRIDGE WHITE CAULKING: TO MATCH | 1860 SF |
| SD2 | PREPAINTED GALVANIZED SHEET METAL SIDING VICWEST 24GA. COLOUR: GQ 16161 CAMBRIDGE WHITE CAULKING: TO MATCH | 920 SF |
| SP1 | SPANDREL GLAZING COLOUR: OPACI-COAT RAL 7005 MOUSE GREY C/W INSULATED BACKPAN, INTERIOR FINISHED WITH STUDS AND GYPSUM WALL BOARD | 500 SF |
| EC1 | SIGNAGE C/W 3/4" EXTERIOR GRADE PLYWOOD FOR SIGNAGE LOCATIONS @ EIFS CONSTRUCTION, UNLESS OTHERWISE NOTED (FIRE RATED WHERE APPLICABLE). | NOT APPLICABLE |
| EC2 | METAL CANOPY (CLOSED) COLOUR: PAINTED BLACK C/W METAL PRIMER | NOT APPLICABLE |
| EC3 | LIGHT FIXTURE | NOT APPLICABLE |
| EC4 | H.M. DOORS & FRAMES: PREFINISHED HOLOW METAL DOORS AND FRAMES. COLOUR: BLACK | NOT APPLICABLE |

TURNER FLEISCHER
TURNER FLEISCHER ARCHITECTS INC.
67 Lesmill Road Toronto ON Canada M3B 2T8
Telephone: (416) 425-2222
turnerfleischer.com

This drawing, as an instrument of service, is provided by and is the property of Turner Fleischer Architects Inc. The contractor must verify and accept responsibility for all dimensions and conditions on site and must notify Turner Fleischer Architects Inc. of any variations from the supplied information. This drawing is not to be scaled. The architect is not responsible for the accuracy of survey, structural, mechanical, electrical, etc., information shown on this drawing. Refer to the appropriate consultant's drawings before proceeding with the work. Construction proceeds under the applicable codes and requirements of authoritative having jurisdiction. The contractor working from drawings not specifically marked 'For Construction' must assume full responsibility and bear costs for any amendments or drawings resulting from such work.

Ottawa
SPEIGHT, VAN NOSTRAND & GIBSON LIMITED
ONTARIO LAND SURVEYORS
1700 GARDNER ROAD, SUITE 205, MISSISSAUGA, ONTARIO L4X 1L7
TEL: (416) 299-8888 FAX: (416) 299-7888
E-MAIL: van@gvg.com

DSEL 120 IBER ROAD, SUITE 103
OTTAWA, ONTARIO K2S 1E5
TEL: (613) 836-0856
david.schaeffer@engineering.illd.ca FAX: (613) 836-7183
SMART SUBDIVISIONS

h HAMMERSCHLAG + JOFFE INC.
69 Lesmill Road Toronto,
Ontario Canada M3B 2T8
T: (416) 444-9283
F: (416) 444-1463
E: chg@hampj.com

FOTENN 111 QUEEN ST. EAST
SOUTH BUILDING, SUITE 450
TORONTO, ONTARIO
M5C 1S2
T416.789.4530

LEGAL INFO:
PART OF LOT 1
CONCESSION 11
GEOGRAPHIC TOWNSHIP OF CUMBERLAND
MUNICIPALITY OF OTTAWA

| # | DATE | DESCRIPTION | BY |
|---|------------|-------------------------|----|
| 4 | 2017-08-22 | ISSUED FOR COORDINATION | AR |
| 3 | 2017-08-10 | ISSUED FOR COORDINATION | AR |
| 2 | 2017-06-23 | ISSUED FOR REVIEW | AR |
| 1 | 2017-01-02 | ISSUED FOR REVIEW | AR |

Choice Properties REIT

PROJECT
4270 INNES RD
OTTAWA, ONTARIO

DRAWING
RETAIL D ELEVATIONS

| | |
|----------------------------|------------------------------|
| PROJECT NO. 02.102R | DRAWING NO. A2-6.1 |
| PROJECT DATE 2016-12-16 | |
| DRAWN BY AR | |
| CHECKED BY JK | |
| SCALE 1:100 | |