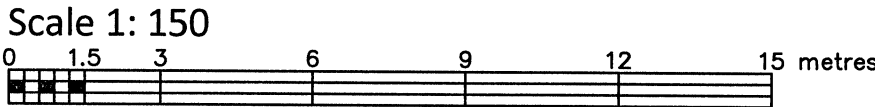


TOPOGRAPHIC PLAN OF SURVEY OF

LOTS 10 AND 11
REGISTERED PLAN 189537
CITY OF OTTAWA

FARLEY, SMITH & DENIS SURVEYING LTD. 2017



Metric Note
Distances and coordinates on this plan are in metres and can be converted to feet by dividing by 0.3048.

Distance Note
Distances shown on this plan are ground distances and can be converted to grid distances by multiplying by the combined scale factor of 0.99995.

Bearing Note
Bearings are MTM grid, derived from the Smart-Net Real Time Network. GPS observations on reference points A and B, shown hereon, having a bearing of N 7° 02' 20" E and are referred to the Central Meridian of MTM Zone 9 (76°30' West Longitude) Nad-83 (Original).

For bearing comparisons, a rotation of 0°27'40" counter-clockwise was applied to bearings on P1, P2 & P3.

- Elevation Notes**
- Elevations shown are geodetic and are referred to Geodetic Datum CGVD-1928 .1978.
 - Elevations derived from Vertical Benchmark No.G-31 (INDEX #300) having a published elevation of 57.406.
 - It is the responsibility of the user of this information to verify that the job benchmark has not been altered or disturbed and that it's relative elevation and description agrees with the information shown on this drawing.

- Utility Notes**
- This drawing cannot be accepted as acknowledging all of the utilities and it will be the responsibility of the user to contact the respective utility authorities for confirmation.
 - Only visible surface utilities were located.
 - Underground utility data derived from City of Ottawa utility sheet reference: Sheet no. C-16-09, C-16-14 & 13377.
 - Sanitary and storm sewer grades and inverts were derived from: City of Ottawa
 - A field location of underground plant by the pertinent utility authority is mandatory before any work involving breaking ground, probing, excavating etc.

CO-ORDINATES WERE DERIVED FROM SMART-NET REAL TIME NETWORK OBSERVATIONS, MTM ZONE 9, N.A.D. 1983 (ORIGINAL).		
POINT ID	NORTHING	EASTING
①	5034111.71	369549.83
②	5034125.34	369548.15
01919680005	5027191.26	361496.76
01919680105	5024915.16	373971.65

CO-ORDINATES ARE MTM ZONE 9, N.A.D. 1983 (ORIGINAL), TO URBAN ACCURACY PER SEC. 14 (2) OF O.REG. 216/10, AND CANNOT, IN THEMSELVES, BE USED TO RE-ESTABLISH CORNERS OR BOUNDARIES SHOWN ON THIS PLAN.

Notes & Legend	
—□—	Denotes Survey Monument Planted
—■—	Survey Monument Found
SIB	Standard Iron Bar
IB	Iron Bar
IBD	Round Iron Bar
CC	Cut Cross
(Wit)	Witness
Meas	Measured
(P1)	Registered Plan 189537
(P2)	Plan SR-13317
(P3)	Plan By (1692) Dated February 3, 2011
○ MH-ST	Maintenance Hole (Storm)
○ MH-S	Maintenance Hole (Sanitary)
○ MH	Maintenance Hole (Unidentified)
— ST —	Underground Storm Sewer
— S —	Underground Sanitary Sewer
— W —	Underground Water
— OW —	Overhead Wires
— G —	Underground Gas
○ UP	Utility Pole
○ AN	Anchor
□ CB	Catch Basin
○ FH	Fire Hydrant
○ WV	Water Valve
Inv.	Invert
T/G	Top of Grate
○ B	Bollard
○ SP	Water Stand Post
□ AC	Air Conditioner
BF	Board Fence
CLF	Chain Link Fence
RF	Rail Fence
DC	Depressed Curb
Top	Top of Slope
Bot	Bottom of Slope
U/Eave	Underside of Eave
TpFdn	Top of Foundation
C/L	Centreline
+ 65.00	Location of Elevations
+ 65.00	Top of Concrete Curb/Wall Elevation
⊙	Deciduous Tree
⊙	Coniferous Tree

WARNING: NO PERSON MAY COPY, REPRODUCE, DISTRIBUTE OR ALTER THIS PLAN IN WHOLE OR IN PART WITHOUT THE WRITTEN PERMISSION OF FARLEY, SMITH & DENIS SURVEYING LTD. © FARLEY, SMITH & DENIS SURVEYING LTD., 2017.

Surveyor's Certificate
I certify that:

- This survey and plan are correct and in accordance with the Surveys Act, the Surveyors Act and the Regulations made under them.
- The survey was completed on the 23rd day of August, 2017.

SEPTEMBER 06, 2017
Date

Ronald A. Denis
Ronald A. Denis
Ontario Land Surveyor

FARLEY, SMITH & DENIS SURVEYING LTD.

ONTARIO LAND SURVEYORS
CANADA LAND SURVEYORS

190 COLONNADE ROAD, OTTAWA, ONTARIO K2E 7J5
TEL. (613) 727-8226 FAX. (613) 727-1826