



This drawing, as an instrument of service, is provided by and is the property of Turner Fleischer Architects Inc. The contractor must verify and accept responsibility for all dimensions and conditions on site and must notify Turner Fleischer Architects Inc. of any variations from the supplied information. This drawing is not to be scaled. The architect is not responsible for the accuracy of survey, structural, mechanical, electrical, etc., information shown on this drawing. Refer to the appropriate consultant's drawings before proceeding with the work. Construction must conform to all applicable codes and requirements of authorities having jurisdiction. The contractor working from drawings not specifically marked 'For Construction' must assume full responsibility and bear costs for any corrections or damages resulting from his work.

APPROVED	<input type="checkbox"/>	REFUSED	<input type="checkbox"/>
THIS	DAY OF	20	
DERRICK MOODIE, MANAGER			
PLANNING, INFRASTRUCTURE AND ECONOMIC DEVELOPMENT DEPARTMENT, CITY OF OTTAWA			

2	2018-01-31	ISSUED FOR SPA	RC
1	2018-01-12	ISSUED FOR REVIEW	RC

Issue / Rev:	Date:	Issue / Revision:	By
--------------	-------	-------------------	----

PROJECT ARCHITECT



**TURNER FLEISCHER**

TURNER FLEISCHER ARCHITECTS INC.  
67 Leavelle Road, Toronto ON Canada M3B 2T8  
Tel: (416) 444-1544 Fax: (416) 444-1545  
turnerfleischer.com

DESIGN ARCHITECT

**CREATE**  
Architecture Planning & Design PLLC

The Chrysler Building  
405 Lexington Avenue, Tower Suite 70  
New York, NY 10174  
Phone: (212) 297-0880  
www.createworldwide.com

SITE / CIVIL



Architects, Engineers, Planners  
5th Floor, 230 Richmond Street West  
Toronto, ON  
M5V 1V6, Canada  
Tel: (416) 596-1930  
Fax: (416) 596-0644

333 Preston Street  
Tower 1, Suite 400  
Ottawa, Ontario  
Canada K1S 5N4  
Tel: (613) 225-1311  
FAX: (613) 225-9868

ELECTRICAL



HAMMERSCHLAG + JOFFE INC.

67 Leavelle Road Toronto  
Ontario Canada M3B 2T8  
T: (416) 444-5283  
F: (416) 444-1543  
E: chw@hampj.com

PLANNER

**FOTENN PLANNING & URBAN DESIGN**

223 McLeod Street | Ottawa, ON | K2P 0Z8  
T: 613.730.5709 ext.234 | F: 613.730.1136

DEVELOPER

**RIO CAN**

RioCan Real Estate Investment Trust  
2300 Yonge Street  
Suite 500  
Toronto, Ontario  
M4P 1E4  
(416) 646-8330

DEVELOPER

**Tanger Outlets**

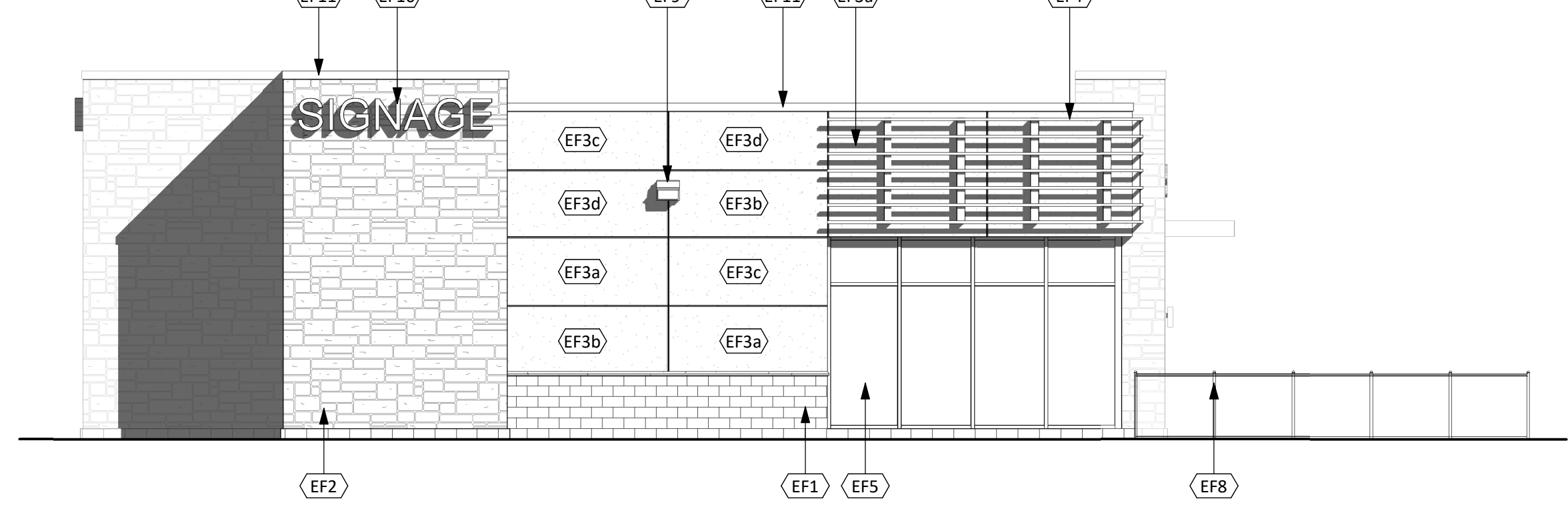
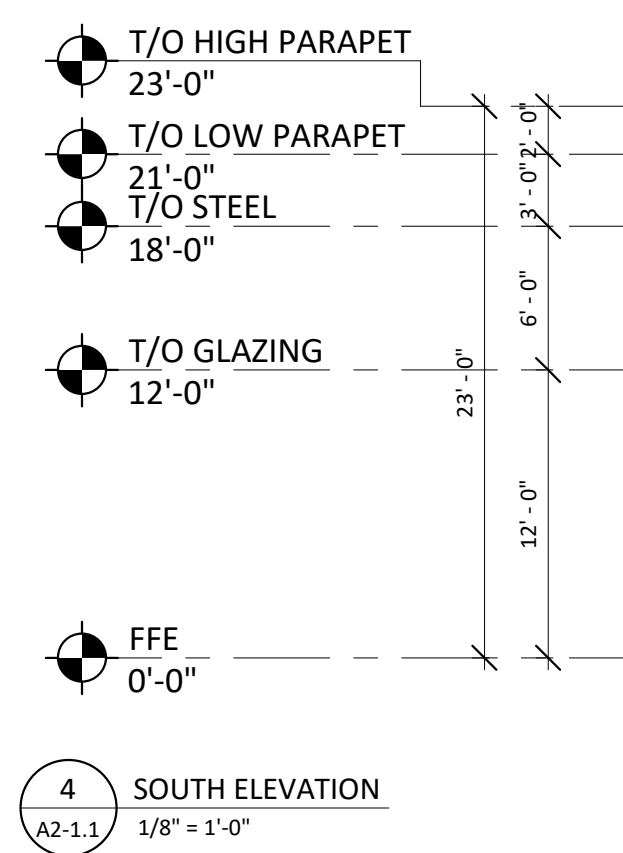
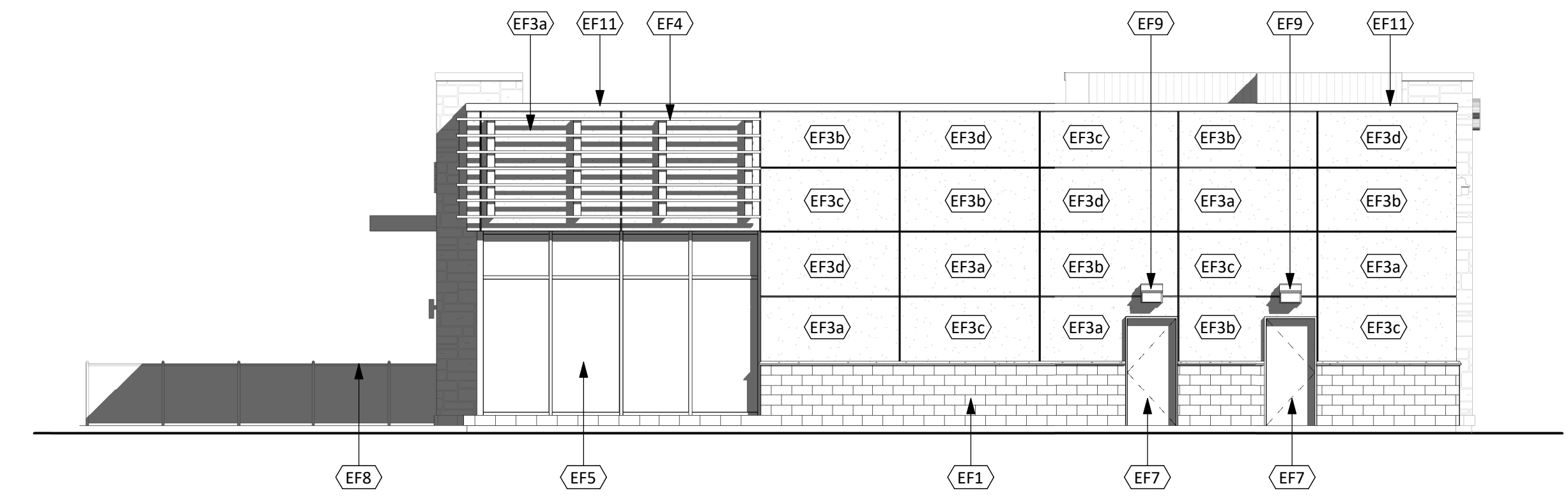
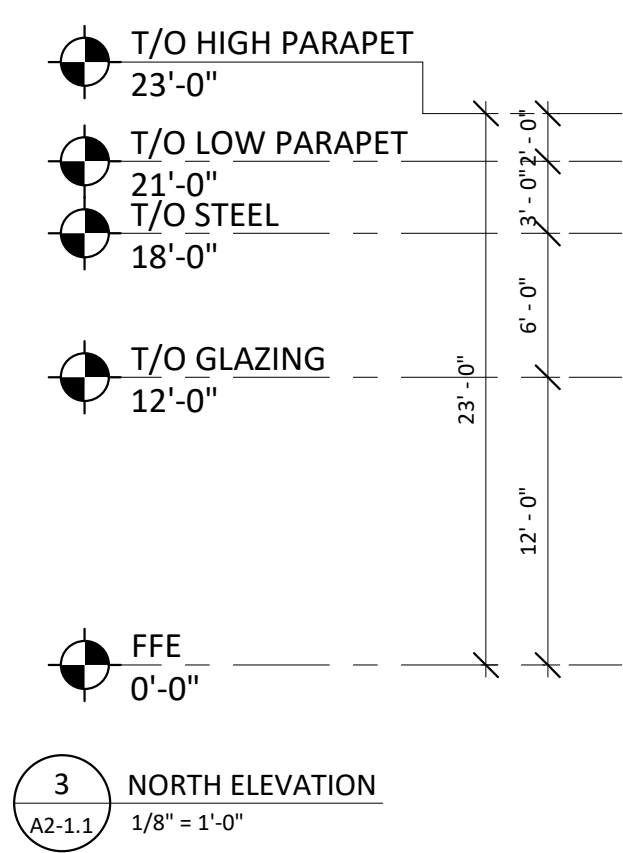
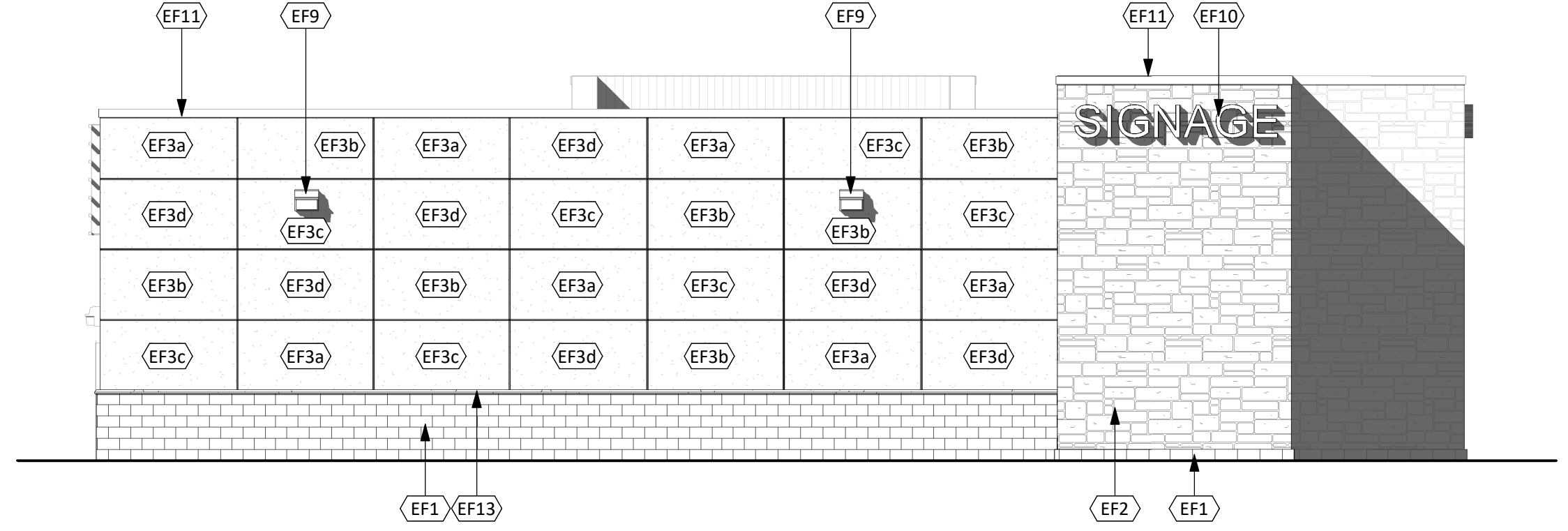
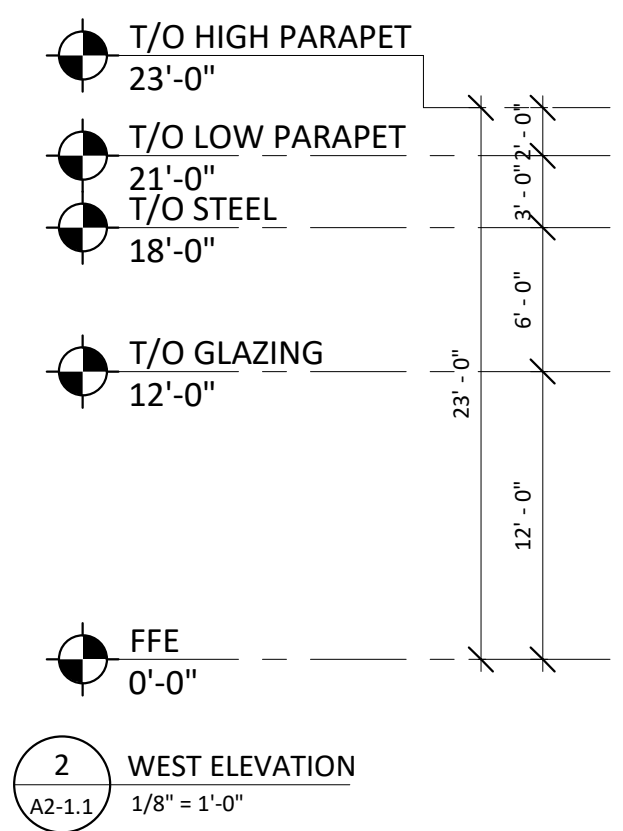
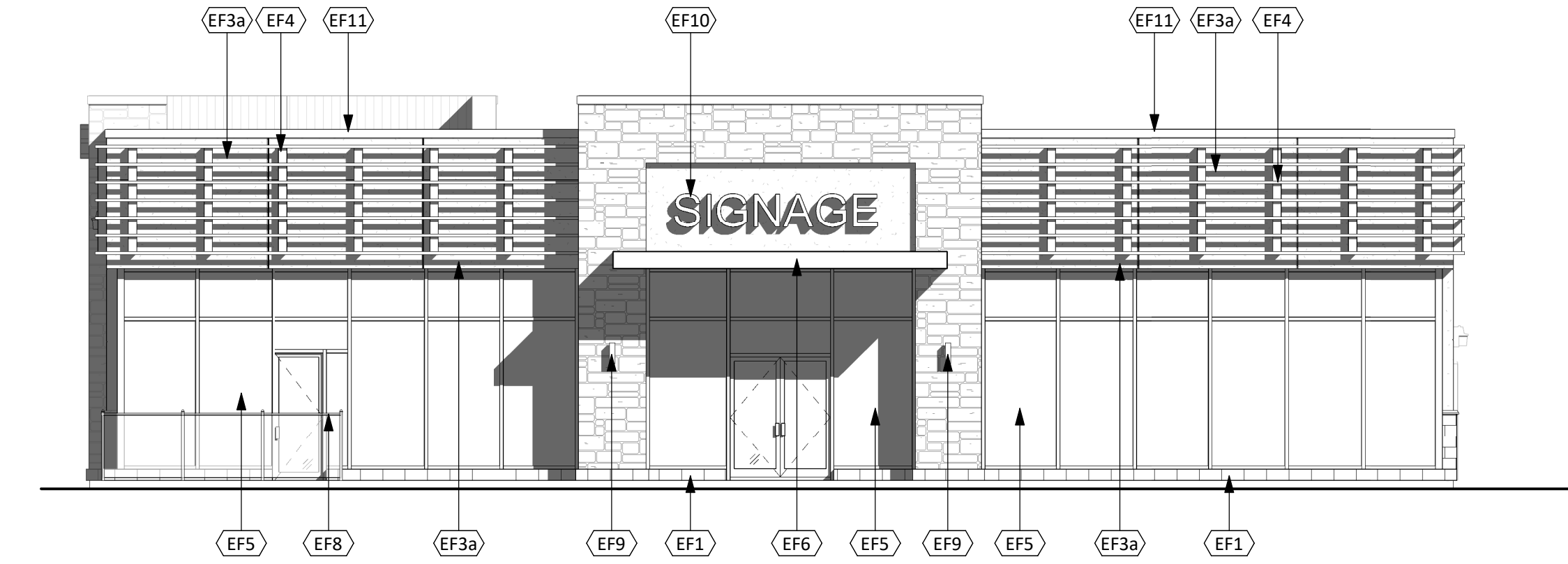
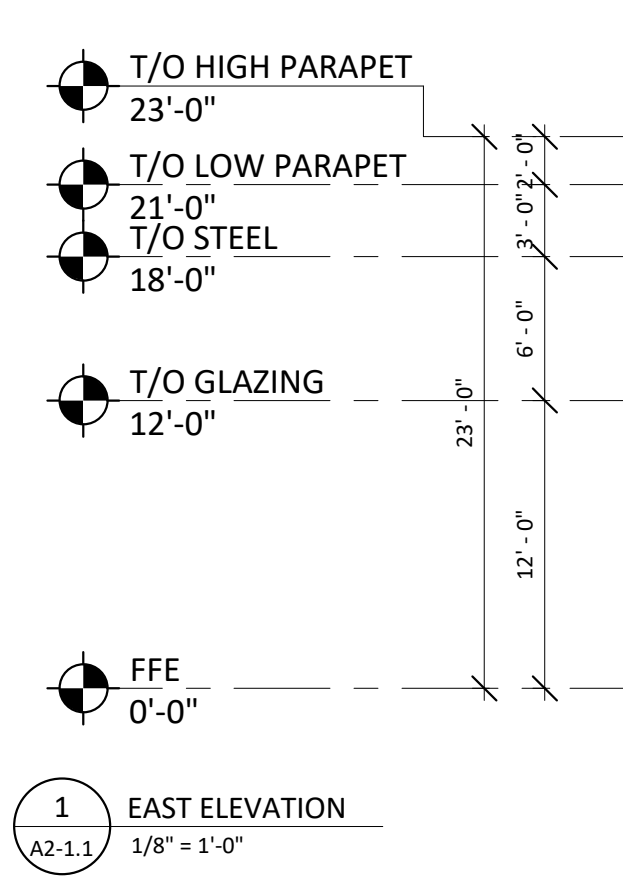
Tanger Outlets  
3200 Northline Avenue, Suite 360  
Greensboro, North Carolina  
27408

Project :  
**TANGER OUTLETS KANATA**  
KANATA, ONTARIO

Drawing Name :	
<b>BUILDING 15 PERSPECTIVE</b>	
Proj no. :	12.258
Drawn by :	RC
Checked by :	RD
Date :	2017-01-10
Scale :	
Drawing No. :	

A2-1





EXTERIOR FINISH & COMPONENT SCHEDULE	
MATERIAL	DESCRIPTION
EF1	CONCRETE BLOCK ARCHITECTURAL BLOCK 4"x16"x24" MANUFACTURER: SHOULDICE ARCHITECTURAL BLACK TIE SERIES FINISH: TEX-STONE COLOUR: COLBY (TAPESTRY FINISH)
EF2	CULTURED STONE MANUFACTURER: CANADIAN STONE INDUSTRIES DEL MARE LEDGESTONE SERIES COLOUR: BAROSSA
EF3a	EIFS (EXTERIOR INSULATED FINISH SYSTEM) ACRYLIC STUCCO FINISH FINISH: SANPEBBLE COLOUR: BMHC-155 NEWBURYPORT BLUE
EF3b	EIFS (EXTERIOR INSULATED FINISH SYSTEM) ACRYLIC STUCCO FINISH FINISH: SANPEBBLE COLOUR: BM-2128 OXFORD GRAY
EF3c	EIFS (EXTERIOR INSULATED FINISH SYSTEM) ACRYLIC STUCCO FINISH FINISH: SANPEBBLE COLOUR: BM OC-85 MAYONNAISE
EF3d	EIFS (EXTERIOR INSULATED FINISH SYSTEM) ACRYLIC STUCCO FINISH FINISH: SANPEBBLE COLOUR: BM 1459 METRO GRAY
EF4	METAL SLATS 2" x 2" x 1/8" HSS GALVANIZED LUBES HORIZONTAL AND HSS 6 X 3 VERTICAL SUPPORTS DESIGNED TO CARRY SIGNAGE AND STAMPED BY P.ENG
EF5	GLAZED DOORS & WINDOWS CLEAR ANODIZED ALUMINUM FRAMES CLEAR INSULATED VISION GLASS/LOW-E GLAZING (TEMPERED GLASS TO BE USED AT DOORS AND SIDELIGHTS)
EF6	CLOSED CANOPY
EF7	H.M. DOORS & FRAMES PREFINISHED HOLLOW METAL DOORS AND FRAMES COLOUR: TO BE DETERMINED
EF8	PATIO
EF9	EXTERIOR LIGHT FIXTURE LED WALL PACK
EF10	SIGNAGE
EF11	CAP FLASHING COLOUR: BLACK

This drawing, as an instrument of service, is provided by and is the property of Turner Fleischer Architects Inc. The contractor must verify and accept responsibility for all dimensions and conditions on site and must notify Turner Fleischer Architects Inc. of any variations from the supplied information. This drawing is not to be scaled. The architect is not responsible for the accuracy of survey, structural, mechanical, electrical, etc., information shown on this drawing. Refer to the appropriate consultant's drawings before proceeding with the work. Construction must conform to all applicable codes and requirements of authorities having jurisdiction. The contractor working from drawings not specifically marked 'For Construction' must assume full responsibility and bear costs for any corrections or damages resulting from his work.

APPROVED ☐ REFUSED ☐

THIS \_\_\_\_ DAY OF \_\_\_\_\_, 20\_\_

DERRICK MOODIE, MANAGER

DEVELOPMENT REVIEW WEST

PLANNING, INFRASTRUCTURE AND ECONOMIC DEVELOPMENT DEPARTMENT, CITY OF OTTAWA

2		2018-01-31	ISSUED FOR SPA	RC
1		2019-01-12	ISSUED FOR REVIEW	RC
Issue:	Rev:	Date:	Issue / Revision:	By

PROJECT ARCHITECT

**TURNER FLEISCHER**  
TURNER FLEISCHER ARCHITECTS INC.  
67 Leimill Road Toronto ON Canada M5S 2T8  
Tel: (416) 444-1463 Fax: (416) 444-1463  
www.turnerfleischer.com

DESIGN ARCHITECT

**CREATE**  
Architecture Planning & Design  
The Chrysler Building  
405 Lexington Avenue, Tower Suite 70  
New York, NY 10174  
Phone: (212) 297-0880  
www.createworldwide.com

SITE / CIVIL

**IBI GROUP**  
Architects, Engineers, Planners  
5th Floor, 230 Richmond Street West  
Toronto, ON  
M5V 1V6, Canada  
Tel: (416) 596-1930 Fax: (416) 596-0644  
333 Preston Street  
Tower 1, Suite 400  
Ottawa, Ontario  
Canada K1S 5M4  
Tel: (613) 225-1311 Fax: (613) 225-9868

ELECTRICAL

**h** HAMMERSCHLAG + JOFFE INC.  
60 Leslie Road Toronto  
Ontario Canada M3B 2T8  
T: (416) 444-0283  
F: (416) 444-1463  
E: dhw@hampol.com

PLANNER

**FOTENN PLANNING & URBAN DESIGN**  
223 McLeod Street | Ottawa, ON | K2P 0Z8  
T: 613.730.5709 ext.234 | F: 613.730.1136

DEVELOPER

**RIO CAN**  
RioCan Real Estate Investment Trust  
2300 Yonge Street  
Suite 500  
Toronto, Ontario  
M4P 1E4  
(416) 646 8330

DEVELOPER

**TangerOutlets**  
Tanger Outlets  
3200 Northline Avenue, Suite 360  
Greensboro, North Carolina  
27408

Project :

**TANGER OUTLETS KANATA**  
KANATA, ONTARIO

Drawing Name :

**BUILDING 15 ELEVATIONS**

Proj no. :	12-258	Date :	2017-01-10
Drawn by :	RC	Scale :	1/8" = 1'-0"
Checked by :	RD	Drawing No. :	

**A2-1.1**

