



This drawing, as an instrument of service, is provided by and is the property of Turner Fleischer Architects Inc. The contractor must verify and accept responsibility for all dimensions and conditions on site and must notify Turner Fleischer Architects Inc. of any variations from the applied information. This drawing is not to be scaled. The architect is not responsible for the accuracy of survey, structural, mechanical, electrical, etc. information shown on this drawing. Refer to the appropriate consultant's drawings before proceeding with the work. Construction must conform to all applicable codes and requirements of authorities having jurisdiction. The contractor working from drawings not specifically marked 'For Construction' must assume full responsibility and bear costs for any corrections or damage resulting from his work.

APPROVED  REFUSED   
THIS DAY OF \_\_\_\_\_, 20\_\_

DERRICK MOODIE, MANAGER  
DEVELOPMENT REVIEW WEST  
PLANNING, INFRASTRUCTURE AND ECONOMIC  
DEVELOPMENT DEPARTMENT, CITY OF OTTAWA

2	2018-01-31	ISSUED FOR SPA	RC
1	2017-12-07	ISSUED FOR REVIEW	RC

Issue / Rev: Date: Issue / Revision: By

PROJECT ARCHITECT  
**TURNER FLEISCHER**  
TURNER FLEISCHER ARCHITECTS INC.  
67 Leavelle Road, Toronto ON, Canada M9B 2T8  
Tel: (416) 444-5222 Fax: (416) 444-9777  
turnerfleischer.com

DESIGN ARCHITECT  
**CREATE**  
Architecture Planning & Design PLLC  
The Chrysler Building  
405 Lexington Avenue, Tower Suite 70  
New York, NY 10174  
Phone: (212) 297-0880  
www.createworldwide.com

SITE / CIVIL  
**IBI GROUP**  
Architects, Engineers, Planners  
5th Floor, 250 Richmond Street West  
Toronto, ON  
M5V 1V6, Canada  
Tel: (416) 596-1930  
Fax: (416) 596-0644  
333 Preston Street  
Tower 1, Suite 400  
Ottawa, Ontario  
Canada K1S 5H4  
Tel: (613) 225-1311  
FAX: (613) 225-9868

ELECTRICAL  
**hj** HAMMERSCHLAG + JOFFE INC.  
80 Leavelle Road Toronto  
Ontario Canada M9B 2T8  
T: (416) 444-9283  
F: (416) 444-1483  
E: ovg@hampj.com

PLANNER  
**FOTENN** PLANNING &  
URBAN DESIGN  
223 McLeod Street | Ottawa, ON | K2P 0Z8  
T: 613.730.5709 ext.234 | F: 613.730.1136

DEVELOPER  
**RIOCAN**  
RioCan Real Estate Investment Trust  
2300 Yonge Street  
Suite 500  
Toronto, Ontario  
M4P 1E4  
(416) 646 8330

DEVELOPER  
**Tanger Outlets**  
Tanger Outlets  
3200 Northline Avenue, Suite 360  
Greensboro, North Carolina  
27408

Project :  
**TANGER OUTLETS KANATA**  
KANATA, ONTARIO

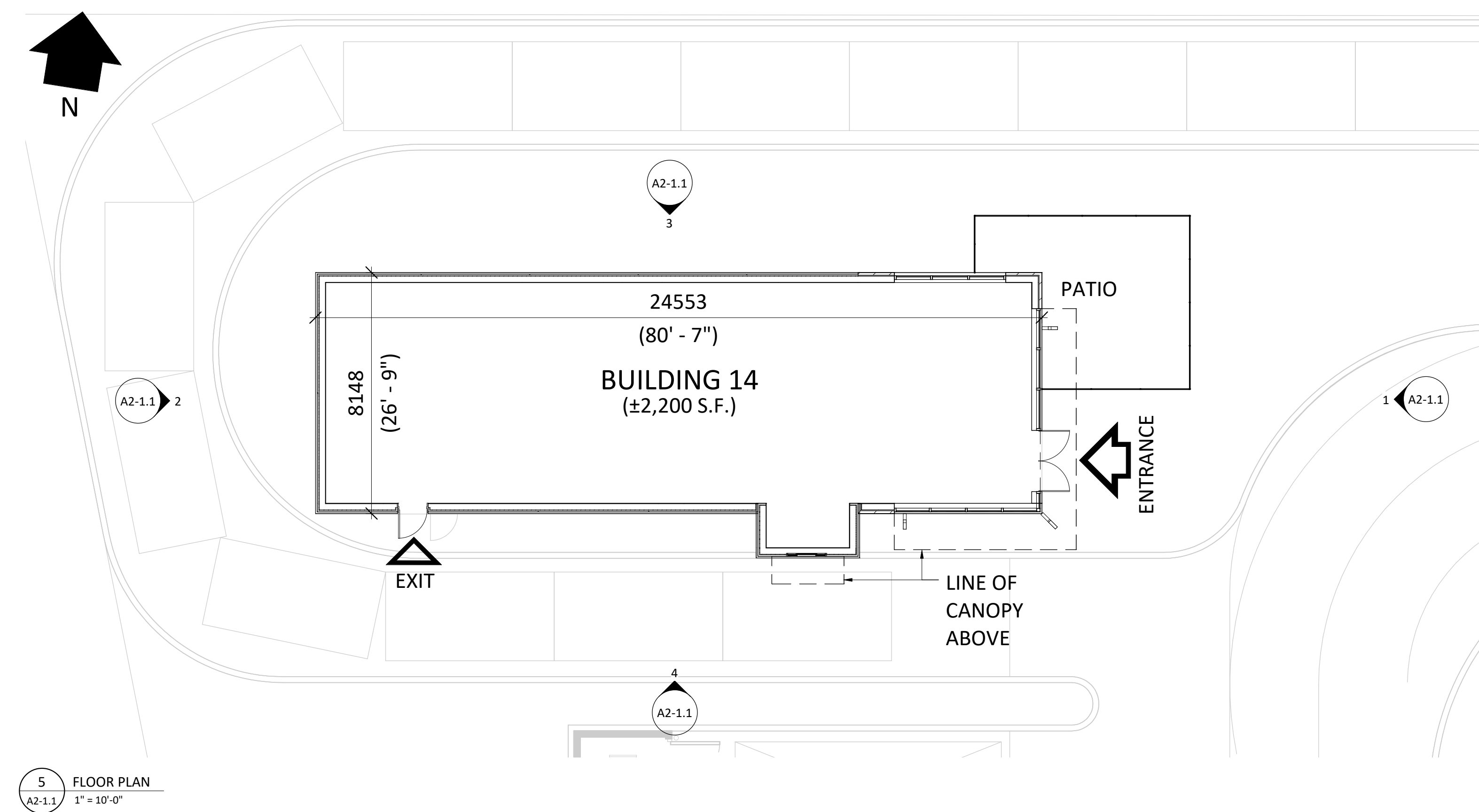
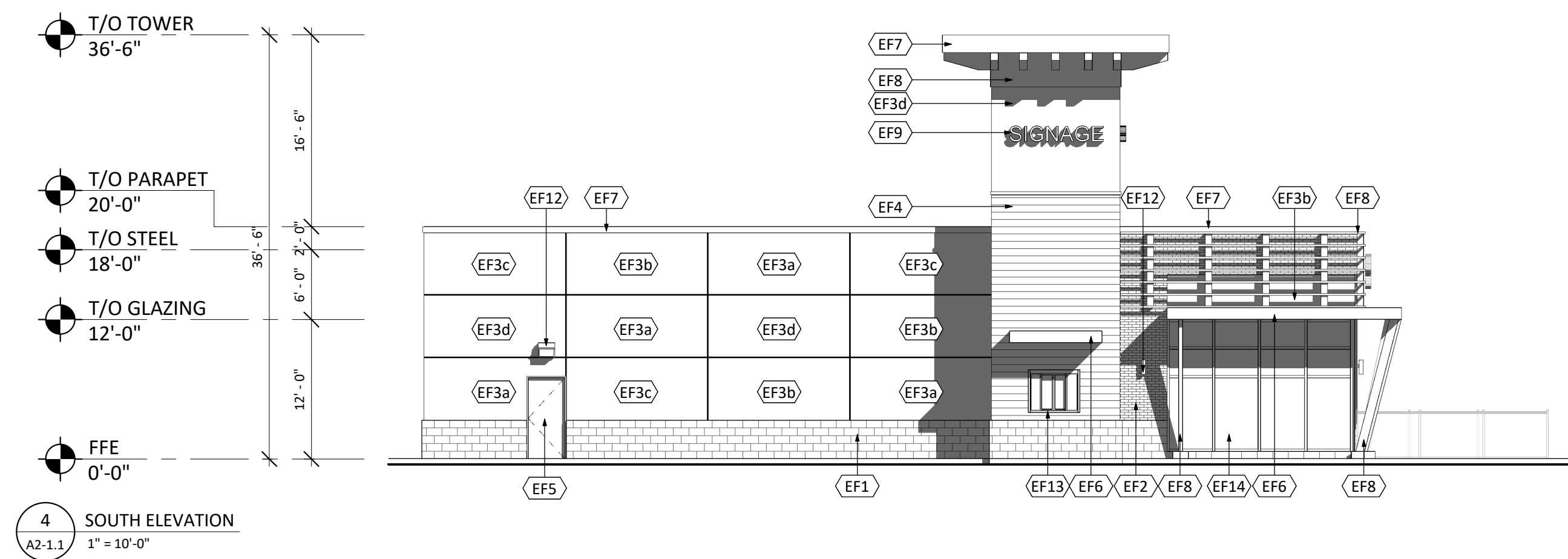
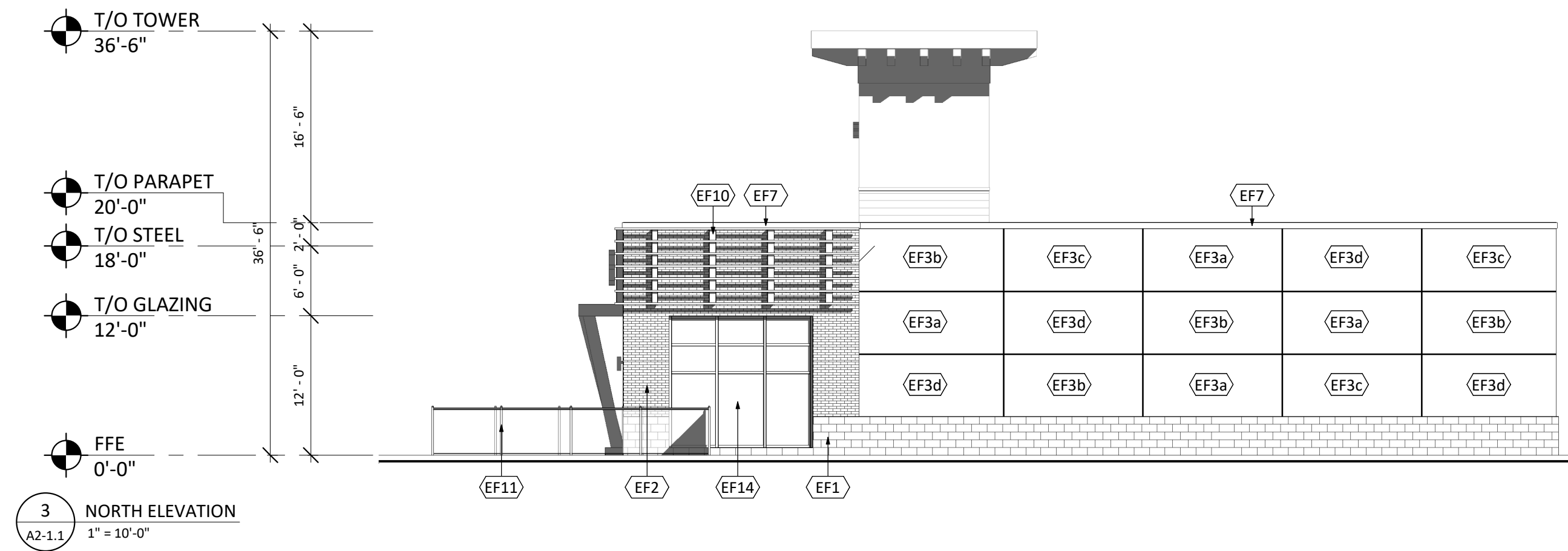
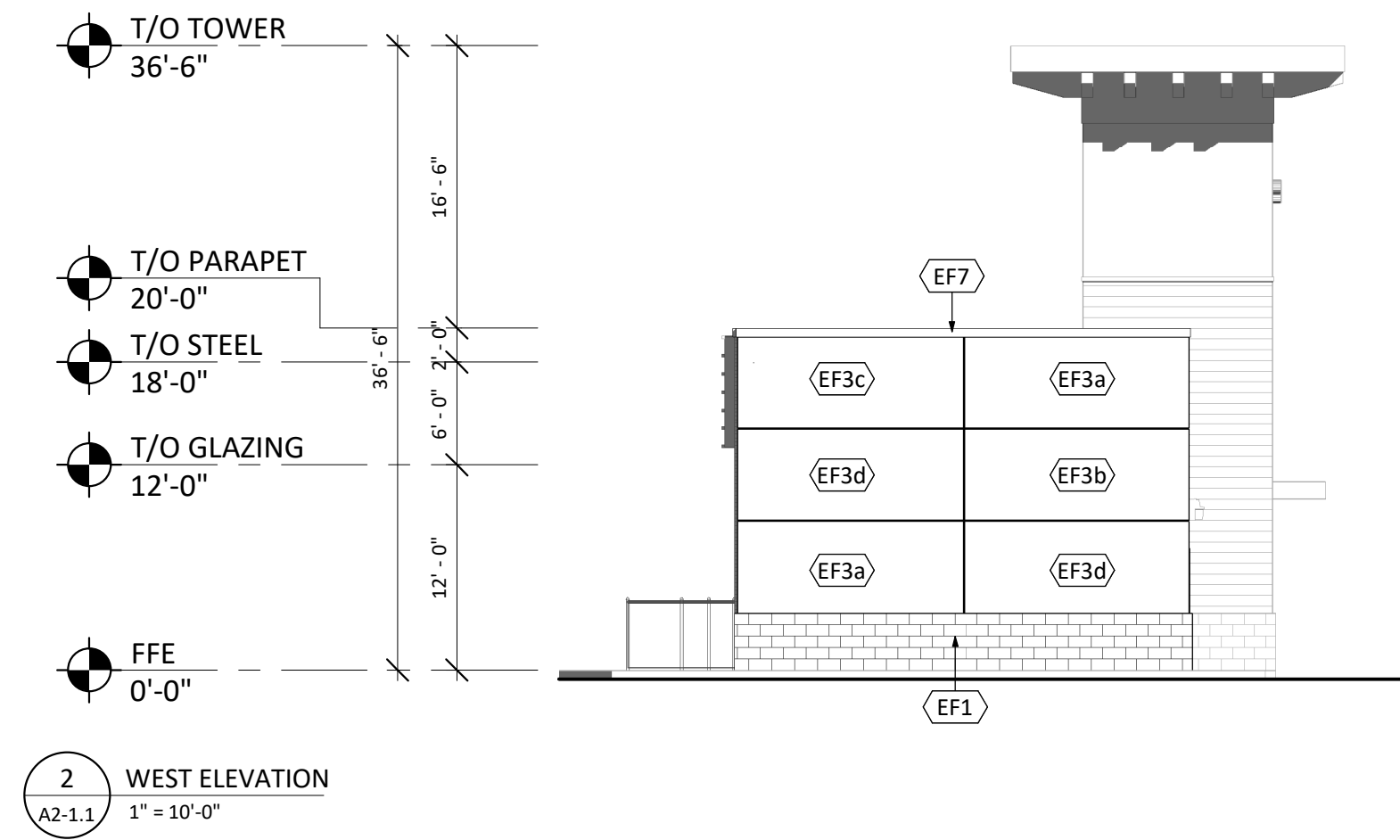
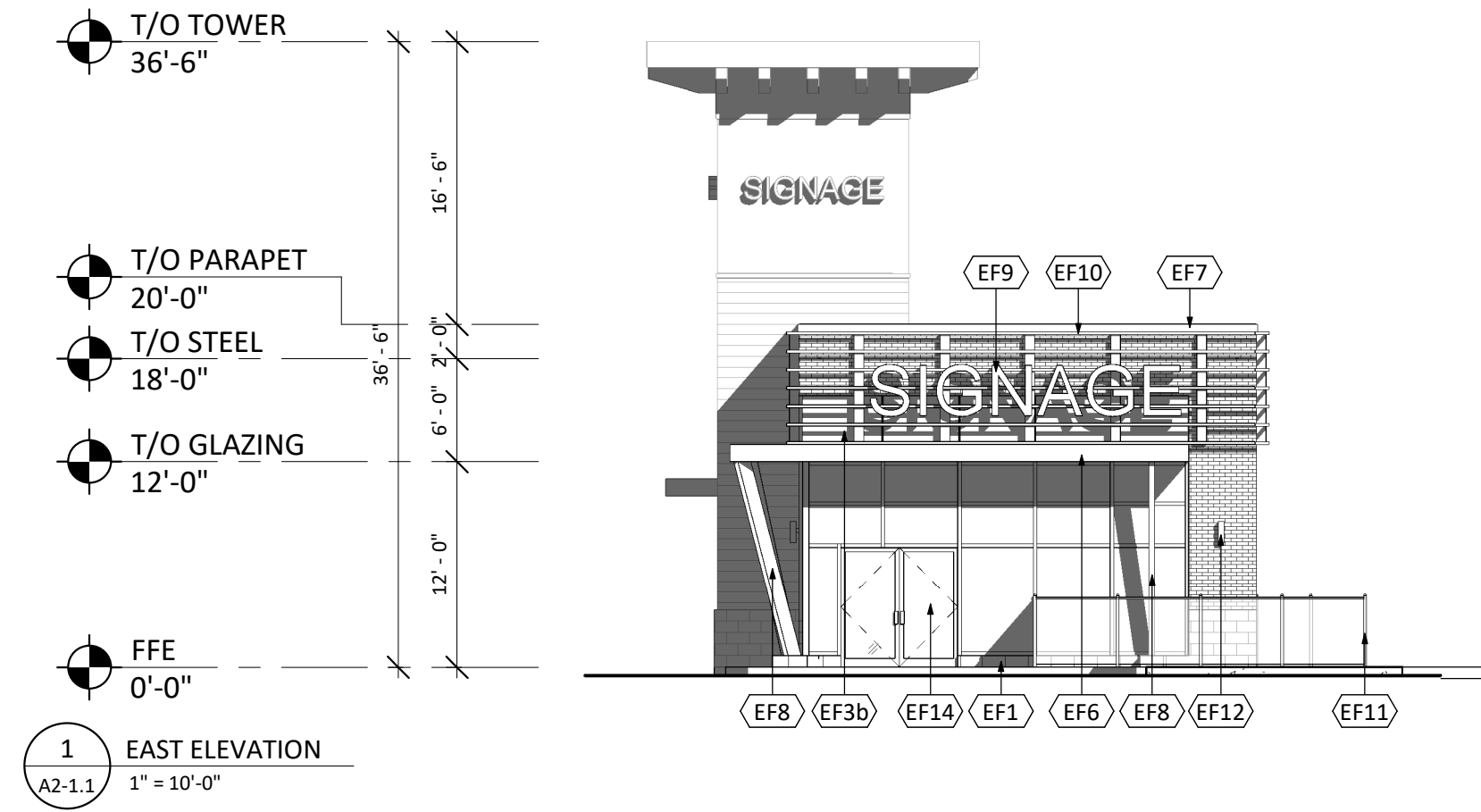
Drawing Name :

PERSPECTIVE

Proj no. : 12.258 Date : 2017-12-06  
Drawn by : RC Scale :  
Checked by : RD

Drawing No. :

A2-1



EXTERIOR FINISH & COMPONENT SCHEDULE	
MATERIAL	DESCRIPTION
EF1	CONCRETE ARCHITECTURAL BLOCK 4"x16"x24" MANUFACTURER: SHOULDICE ARCHITECTURAL BLACK TIE SERIES FINISH: TEX-STONE COLOUR: COLBY (TAPESTRY FINISH)
EF2	ARCHITECTURAL BRICK MANUFACTURER: JAZBRICK SIZE: MODULAR 3 1/2" x 2 1/4" x 7 5/8" COLOUR: BLACK
EF3a	EIFS (EXTERIOR INSULATED FINISH SYSTEM) ACRYLIC STUCCO FINISH FINISH: SANPEBBLE COLOUR: BMHC-155 NEWBURYPORT BLUE
EF3b	EIFS (EXTERIOR INSULATED FINISH SYSTEM) ACRYLIC STUCCO FINISH FINISH: SANPEBBLE COLOUR: BM-2128 OXFORD GRAY
EF3c	EIFS (EXTERIOR INSULATED FINISH SYSTEM) ACRYLIC STUCCO FINISH FINISH: SANPEBBLE COLOUR: BM OC-85 MAYONNAISE
EF3d	EIFS (EXTERIOR INSULATED FINISH SYSTEM) ACRYLIC STUCCO FINISH FINISH: SANPEBBLE COLOUR: BM 1459 METRO GRAY
EF4	FIBER CEMENT SIDING HORIZONTAL MANUFACTURER: CERTAINFED OR APPROVED EQUAL WEATHERBOARD CEDAR LAP SIDING 8" WIDE COLOUR: CEDAR 523
EF5	H.M. DOORS & FRAMES PREFINISHED HOLLOW METAL DOORS AND FRAMES COLOUR: TO BE DETERMINED
EF6	CANOPY
EF7	PREFINISHED METAL FLASHING/FASCIA 24 GA. PREFINISHED METAL FLASHING/FASCIA COLOUR: TO BE DETERMINED
EF8	WOOD FINISH
EF9	SIGNAGE (BY TENANT)
EF10	METAL SLATS 2" x 2" x 1/8" HSS GALVANIZED LUBES HORIZONTAL AND HSS 6 X 3 VERTICAL SUPPORTS DESIGNED TO CARRY SIGNAGE AND STAMPED BY P.ENG
EF11	EF11 - PATIO
EF12	EXTERIOR LIGHT FIXTURE LED WALL PACK
EF13	DRIVE-THRU PICK UP WINDOW
EF14	GLAZED DOORS & WINDOWS CLEAR ANODIZED ALUMINUM FRAMES CLEAR INSULATED VISION GLASS/LOW-E GLAZING (TEMPERED GLASS TO BE USED AT DOORS AND SIDELIGHTS/SIDELITES)

This drawing, as an instrument of service, is provided by and is the property of Turner Fleischer Architects Inc. The contractor must verify and accept responsibility for all dimensions and conditions on site and must notify Turner Fleischer Architects Inc. of any variations from the applied information. This drawing is not to be scaled. The architect is not responsible for the accuracy of survey, structural, mechanical, electrical, etc. information shown on this drawing. Refer to the appropriate consultant's drawings before proceeding with the work. Construction must conform to all applicable codes and requirements of authorities having jurisdiction. The contractor working from drawings not specifically marked 'For Construction' must assume full responsibility and bear costs for any corrections or damage resulting from his work.

**APPROVED**  **REFUSED**   
THIS DAY OF \_\_\_\_\_, 20\_\_

**DERRICK MOODIE, MANAGER**  
DEVELOPMENT REVIEW WEST  
PLANNING, INFRASTRUCTURE AND ECONOMIC  
DEVELOPMENT DEPARTMENT, CITY OF OTTAWA

2016-01-31 ISSUED FOR SPA RC  
2017-12-07 ISSUED FOR REVIEW RC  
Issue / Rev: Date: Issue / Revision: By

PROJECT ARCHITECT  
**TURNER FLEISCHER**  
TURNER FLEISCHER ARCHITECTS INC.  
67 LeMill Road, Toronto ON, Canada M9B 2T8  
Tel: (416) 596-1930 Fax: (416) 596-0644  
turnerfleischer.com

DESIGN ARCHITECT  
**CREATE**  
Architecture Planning & Design PLLC  
The Chrysler Building  
405 Lexington Avenue, Tower Suite 70  
New York, NY 10174  
Phone: (212) 297-0880  
www.createworldwide.com

SITE / CIVIL  
**IBI GROUP**  
Architects, Engineers, Planners  
5th Floor, 250 Richmond Street West  
Toronto, ON M5V 1V6, Canada  
Tel: (416) 596-1930 Fax: (416) 596-0644  
333 Preston Street  
Tower 1, Suite 400  
Ottawa, Ontario  
Canada K1S 5H4  
Tel: (613) 225-1311 Fax: (613) 225-9868

ELECTRICAL  
**h HAMMERSCHLAG + JOFFE INC.**  
80 LeMill Road Toronto  
Ontario Canada M9B 2T8  
T: (416) 444-9283  
F: (416) 444-1483  
E: ovg@hampst.com

PLANNER  
**FOTENN PLANNING & URBAN DESIGN**  
223 McLeod Street | Ottawa, ON | K2P 0Z8  
T: 613.730.5709 ext.234 | F: 613.730.1134

DEVELOPER  
**RIO CAN**  
RioCan Real Estate Investment Trust  
2300 Yonge Street  
Suite 500  
Toronto, Ontario  
M4P 1E4  
(416) 646 8330

DEVELOPER  
**TangerOutlets**  
Tanger Outlets  
3200 Northline Avenue, Suite 360  
Greensboro, North Carolina  
27408

Project : **TANGER OUTLETS KANATA**  
KANATA, ONTARIO

Drawing Name : **ELEVATIONS**

Proj. no. : 12.258 Date : 2017-12-06  
Drawn by : RC Scale : 1" = 10'-0"  
Checked by : RD Drawing No : **A2-1.1**

F:\P\9\12258\15-REV\15-ELEVATIONS\A2-1 (OUTPARCEL)\12258-A2-1 (BLDG -1).DWG (1/1)