

PROPOSED WATER SERVICE TABLE			
STATION	SURFACE ELEVATION	T/W/M ELEVATION	COMMENTS
0+000	95.35	92.35±	TEE CONNECTION TO EX. 300mmØ WM
0+001	95.32	92.35±	200mmØ VALVE AND VALVE BOX
0+004.7	95.23	92.53	CROSS ABOVE EX. 450Ø SAN (±0.85m CLEARANCE)
0+006	95.20	92.53	11.25° HORIZONTAL BEND
0+022	94.93	92.53	CROSS BELOW 250mmØ STM (±0.63m CLEARANCE)
0+025	95.00	92.53	-
0+050	94.98	92.53	-
0+058.2	94.93	92.53	CROSS BELOW 300mmØ STM (±0.75m CLEARANCE)
0+075	95.14	92.53	-
0+092.7	94.93	92.53	22.5° HORIZONTAL BEND
0+094.4	94.92	92.52	CROSS BELOW 375mmØ STM (±0.77m CLEARANCE)
0+098.1	94.90	92.50	22.5° HORIZONTAL BEND
0+100.9	94.97	92.57	200 x 200 x 150 HYDRANT TEE
0+102.9	95.00	92.60	200 x 150 REDUCER
0+103.9	95.02	92.62	150mmØ VALVE AND VALVE BOX
0+116.2	95.20	92.62	CAP 1.0m FROM BUILDING FACE
1+000	94.97	92.57	200 x 200 x 150 HYDRANT TEE
1+005	94.97	92.57	150mmØ VALVE AND VALVE BOX
1+007.5	95.15	92.57	FIRE HYDRANT

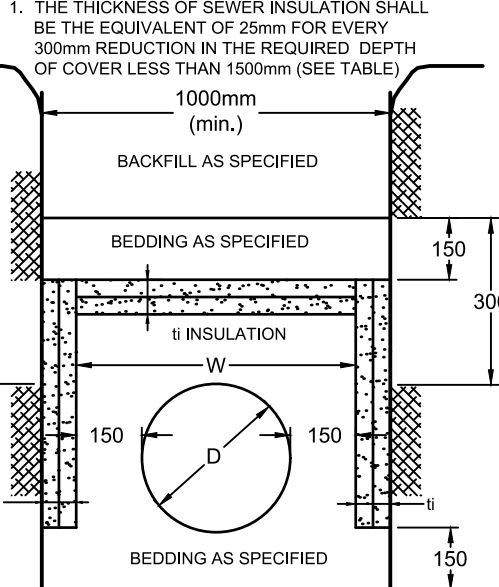
300mm x 300mm x 200mm TEE CONNECTION TO EXISTING 300mmØ WATERMAIN. EXACT ELEVATION TO BE FIELD DETERMINED.

WATERMAIN NOTES:

- SUPPLY AND CONSTRUCT ALL WATERMAINS AND APPURTENANCES IN ACCORDANCE WITH THE CITY OF OTTAWA STANDARDS AND SPECIFICATIONS. EXCAVATION, INSTALLATION, BACKFILL AND RESTORATION OF ALL WATERMAINS BY THE CONTRACTOR. CONNECTIONS AND SHUT-OFFS AT THE MAIN AND CHLORINATION OF THE WATER SYSTEM SHALL BE PERFORMED BY THE CONTRACTOR IN THE PRESENCE CITY OF OTTAWA FORCES.
- SPECIFICATIONS:

ITEM	SPEC. No.	REFERENCE
WATERMAIN TRENCHING	W17	CITY OF OTTAWA
THERMAL INSULATION IN SHALLOW TRENCHES	W22	CITY OF OTTAWA
WATERMAIN	PVC DR 18	
- WATERMAIN SHALL BE MINIMUM 2.4m DEPTH BELOW GRADE UNLESS OTHERWISE INDICATED.
- PROVIDE MINIMUM 0.5m CLEARANCE BETWEEN OUTSIDE OF PIPES AT ALL CROSSINGS.
- WATER SERVICE IS TO BE CONSTRUCTED TO WITHIN 1.0m OF FOUNDATION WALL AND CAPPED, UNLESS OTHERWISE INDICATED.

INSULATION NOTES:



INSULATION DETAIL FOR SHALLOW SEWERS

NOT TO SCALE

h = THICKNESS OF INSULATION (mm)
D = DEPTH OF COVER
W = WIDTH OF INSULATION (mm)
D = O.D. OF PIPE (mm)

COVER (mm)	INSULATION THICKNESS (mm)
1500-1200	75
1200-900	100
900-600	125

AREA A-1: INLET CONTROL DEVICE DATA - CBMH 1					
DESIGN EVENT	ICD TYPE (CIRCULAR PLUG)	DIAMETER OF OUTLET PIPE (mm)	DESIGN FLOW (L/s)	DESIGN HEAD (m)	VOLUME (m³)
1.5 YR	120mmØ ORIFICE	375	43.4	1.95	94.88
1:100 YR	120mmØ ORIFICE	375	44.6	2.06	94.99

AREA A-3: INLET CONTROL DEVICE DATA - CBMH 12					
DESIGN EVENT	ICD TYPE (CIRCULAR PLUG)	DIAMETER OF OUTLET PIPE (mm)	DESIGN FLOW (L/s)	DESIGN HEAD (m)	VOLUME (m³)
1.5 YR	100mmØ ORIFICE	375	28.0	1.69	94.89
1:100 YR	100mmØ ORIFICE	375	29.1	1.82	95.02

CAMP MART SITE FLOWS & STORMWATER MANAGEMENT TABLE							
DESIGN EVENT	PRE-DEVELOPMENT CONDITIONS			POST-DEVELOPMENT CONDITIONS			
	UNCONTROLLED FLOW (L/s)	ALLOWABLE RELEASE RATE (L/s)	A-0 FLOW (L/s)	A-1 FLOW (L/s)	A-2 FLOW (L/s)	A-3 FLOW (L/s)	TOTAL FLOW (L/s)
1.5 YR	115.3	99.5	6.7	43.4	9.0	28.0	87.1
1:100 YR	247.0	99.5	13.7	44.6	11.1	29.1	98.5

* REFER TO THE DEVELOPMENT SERVICING STUDY AND STORMWATER MANAGEMENT REPORT (R-2018-011) PREPARED BY NOVATECH FOR DRAINAGE AREA IDENTIFIERS AND STORMWATER MANAGEMENT DETAILS.
**REDUCED FLOW COMPARED TO PRE-DEVELOPMENT UNCONTROLLED CONDITIONS.

NOTE:
THE POSITION OF ALL POLE LINES, CONDUITS, WATERMAINS, SEWERS AND OTHER UNDERGROUND AND OVERGROUND UTILITIES AND STRUCTURES IS NOT NECESSARILY SHOWN ON THE CONTRACT DRAWINGS, AND WHERE SHOWN, THE ACCURACY OF THE POSITION OF SUCH UTILITIES AND STRUCTURES IS NOT GUARANTEED. BEFORE STARTING WORK, DETERMINE THE EXACT LOCATION OF ALL SUCH UTILITIES AND STRUCTURES AND ASSUME ALL LIABILITY FOR DAMAGE TO THEM.

APPROVED ☐ REFUSED ☐
THIS ____ DAY OF ____, 20__

DERRICK MOODIE
MANAGER, DEVELOPMENT REVIEW - WEST
PLANNING, INFRASTRUCTURE & ECONOMIC
DEVELOPMENT DEPARTMENT, CITY OF OTTAWA

OWNER INFORMATION
20 FRANK NIGHBOR INC.
11266 FIFTH LINE
HALTON HILLS, ON, L7G 4S6
SUNNY BAINS
PHONE: 1-877-401-3423
sbains35@gmail.com

No.	REVISION	DATE	BY
1	ISSUED FOR SITE PLAN APPROVAL	FEB 9/18	FST

SCALE
1:250
0 2 4 6 8 10

DESIGN	SM / FST
CHECKED	FST
DRAWN	SM
CHECKED	SM / FST
APPROVED	FST

FOR REVIEW ONLY



NOVATECH
Engineers, Planners & Landscape Architects
Suite 200, 240 Michael Cowland Drive
Ottawa, Ontario, Canada K2M 1P6
Telephone (613) 254-9643
Facsimile (613) 254-5867
Website www.novatech-eng.com

LOCATION
CITY OF OTTAWA
20 FRANK NIGHBOR PLACE - CAMP MART SITE

DRAWING NAME
GENERAL PLAN OF SERVICES

PROJECT No.
117193
REV
REV #1
DRAWING No.
117193-GP2

PLAN24x36 DWG - 314 0mmx60 0mm

#xxxxx

M:\2017\117193-GP2\Drawings\117193-GP2.dwg, GP2, Feb 09, 2018 - 5:10pm, smathews

D07-12-18-XXXX