

NOTES - GENERAL

- ALL EDGES OF DISTURBED PAVEMENT SHALL BE SAW CUT PRIOR TO PLACING NEW PAVEMENT. PAVEMENT REINSTATEMENT SHALL BE WITH STEP JOINTS OF 300mm WIDTH MINIMUM.
- OBTAIN AND PAY FOR ALL NECESSARY PERMITS AND APPROVALS FROM THE MUNICIPAL ENGINEER AND APPROVALS FROM THE MUNICIPAL ENGINEER. THE CONTRACTOR SHALL OBTAIN ALL NECESSARY PERMITS AND APPROVALS FROM THE MUNICIPAL ENGINEER AND APPROVALS FROM THE MUNICIPAL ENGINEER.
- PERMITS/APPROVALS REQUIRED TO COMPLETE THE CONSTRUCTION PERIOD.
- REMOVE FROM SITE ALL EXCESS EXCAVATED MATERIAL UNLESS OTHERWISE DIRECTED FROM THE ENGINEER. EXCAVATE AND REMOVE ALL ORGANIC MATERIAL AND DEBRIS. IF ANY, LOCATED WITHIN THE PROPOSED BUILDING, PARKING AND ROADWAY LOCATIONS.
- AT PROPOSED CONNECTION POINTS AND CROSSINGS (I.E. STORM, SANITARY, WATERMAN, HYDRO, BELL, ETC.), THE CONTRACTOR SHALL DETERMINE THE PRECISE LOCATION AND DEPTH OF EXISTING UTILITIES. THE CONTRACTOR SHALL REPORT ANY DISCREPANCIES OR CONFLICTS TO THE ENGINEER BEFORE COMMENCING WORK.

NOTES - SEWER

- SEWER BEDDING AS PER PIPE TRENCH DETAIL WITH GRANULAR 'X' BEDDING COMPACTED TO 95% OF ITS SPREAD.
- ALL WORK SHALL BE PERFORMED AS APPLICABLE IN ACCORDANCE WITH OPS 407 AND 410.
- CONTRACTOR TO CONFIRM ELEVATION OF EXISTING SEWERS AT PROPOSED CONNECTION POINTS AND REPORT ANY DISCREPANCIES TO THE ENGINEER BEFORE COMMENCING ANY WORK.
- ALL SEWERS WITH LESS THAN 2.0m OF COVER ARE SUBJECT TO THE INSULATION DETAIL ON PLAN C801.

LEGEND:

- PROPERTY LINE
- PROPOSED CURB
- PROPOSED TERRACED CURB
- PROPOSED DOOR ENTRANCE EXT
- EXISTING GRASS AREA TO REMAIN
- PROPOSED CONCRETE FEATURES (SIBEWALK AND LOADING PUMP)
- PROPOSED HEAVY DUTY ASPHALT
- PROPOSED LIGHT DUTY ASPHALT
- ASPHALT TO BE REINSTATE
- TO MATCH EXISTING CONDITIONS
- 0.3m WIDE (MIN.) STEP JOINT
- PROPOSED SILT FENCE AS PER OPSD 218.110
- PROPOSED ELEVATION
- PROPOSED DEPRESSED CURB ELEVATION
- PROPOSED BOTTOM OF CURB ELEVATION
- PROPOSED TOP OF CURB ELEVATION
- PROPOSED TOP OF GRATE ELEVATION
- MATCH INTO EXISTING ELEVATION
- EXISTING ELEVATION
- PROPOSED OVERLAND MAJOR FLOW ROUTE
- PROPOSED SANITARY SEWER
- PROPOSED STORM SEWER
- PROPOSED WATER SERVICE
- PROPOSED MANHOLE OR STORMSEPTOR
- PROPOSED CATCHBASIN OR CATCHBASIN-MANHOLE
- PROPOSED WATER VALVE
- PROPOSED PIPE REDUCER
- PROPOSED PIPE INSULATION
- PROPOSED 100 YEAR HIGH WATER LEVEL
- STORM WATERSHED EXTENT
- WATERSHED NAME
- RUNOFF COEFFICIENT
- AREA IN HECTARES

UNAUTHORIZED CHANGES:

IN THE EVENT THE CLIENT, THE CLIENT'S CONTRACTORS OR SUBCONTRACTORS, OR OTHER PERSONS MAKE ANY CHANGES TO ANY PARTS, PLANS, SPECIFICATIONS OR OTHER CONSTRUCTION DOCUMENTS PREPARED BY J.C.R. LALONDE INC. (LJI) WITHOUT THE WRITTEN APPROVAL OF J.C.R. LALONDE INC., THE CONTRACTOR SHALL BE RESPONSIBLE FOR THE RESULTS OF SUCH CHANGES. THEREFORE THE CLIENT SHALL BE RESPONSIBLE FOR ANY CHANGES TO THE DRAWINGS MADE BY ANY OTHER PERSONS WITHOUT THE WRITTEN APPROVAL OF J.C.R. LALONDE INC. ANY CHANGES MADE TO THE DRAWINGS SHALL BE THE RESPONSIBILITY OF THE PERSON MAKING SUCH CHANGES. THE CONTRACTOR SHALL BE RESPONSIBLE FOR VERIFYING THE ACCURACY OF ALL INFORMATION PROVIDED TO HIM BY THE CLIENT, THE CLIENT'S CONTRACTORS OR SUBCONTRACTORS, OR OTHER PERSONS. THE CONTRACTOR SHALL BE RESPONSIBLE FOR VERIFYING THE ACCURACY OF ALL INFORMATION PROVIDED TO HIM BY THE CLIENT, THE CLIENT'S CONTRACTORS OR SUBCONTRACTORS, OR OTHER PERSONS.

GENERAL NOTES:

EXISTING SERVICES AND UTILITIES SHOWN ON THESE DRAWINGS ARE TAKEN FROM THE RECORD DRAWINGS AND FIELD SURVEY. THE CONTRACTOR SHALL VERIFY THE LOCATION AND ELEVATION OF PIPES AND CHECK WITH THE UTILITY COMPANIES BEFORE DIGGING OR PERFORMING BEFORE START OF CONSTRUCTION.

CONTRACTOR IS ADVISED TO COLLECT INFORMATION ON SOIL CONDITIONS. THE ENGINEER WAIVES ANY AND ALL LIABILITY AND LIABILITY FOR WHICH ARISE FROM OTHER FAILURE TO OBTAIN AND/OR FOLLOW THE SPECIFICATIONS AND DESIGN INTENT THAT CONTACT OR FOR PROBLEMS WHICH ARE NOT OTHERWISE INDICATED ON THESE DRAWINGS. CROSSINGS, INCONVENIENCES ARISING FROM CONTACTS WHICH ARE ALLEGIED, CROSSINGS, CONTRACTOR TO VERIFY ALL DIMENSIONS AND NOTIFY THE ENGINEER OF ANY DISCREPANCIES BEFORE WORK COMMENCES. DO NOT SCALE DRAWINGS.

ISSUED FOR SPA G.M.C. 13 DEC 2017
REVISIONS BY DATE

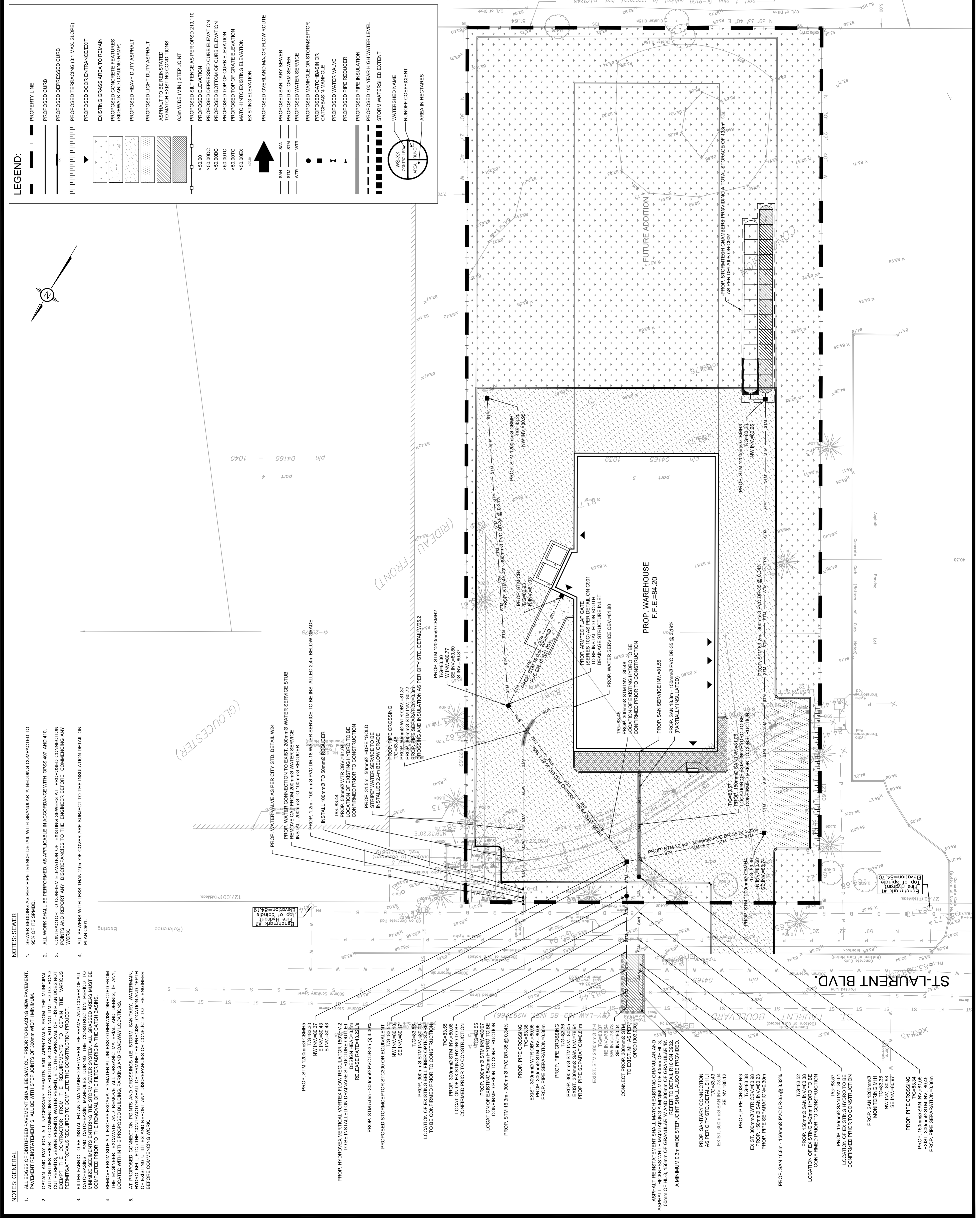
CLIENT
GRAEBECK CONSTRUCTION LTD.
 5430 Canadok Road | Ottawa, ON, K1J 6Z2
 www.lrcal.com | (613) 842-3434

DESIGNED BY: G.M.C.
DRAWN BY: G.M.C.
APPROVED BY: J.C.L.

PROJECT
 2465070 ONTARIO LTD.
 2375 ST-LAURENT BLVD., OTTAWA, ON

DRAWING TITLE
 SERVICING PLAN

PROJECT NO. 170721
DATE 13 DEC 2017



SCALE: 1:250

PROFESSIONAL ENGINEER
J.C.R. LALONDE
 LALONDE ASSOCIATES INC.
 1000 ROUTE 138, SUITE 100
 OTTAWA, ONTARIO K1J 6Z2
 (613) 842-3434

PROFESSIONAL ENGINEER
J.C.R. LALONDE
 LALONDE ASSOCIATES INC.
 1000 ROUTE 138, SUITE 100
 OTTAWA, ONTARIO K1J 6Z2
 (613) 842-3434

PROFESSIONAL ENGINEER
J.C.R. LALONDE
 LALONDE ASSOCIATES INC.
 1000 ROUTE 138, SUITE 100
 OTTAWA, ONTARIO K1J 6Z2
 (613) 842-3434

PROFESSIONAL ENGINEER
J.C.R. LALONDE
 LALONDE ASSOCIATES INC.
 1000 ROUTE 138, SUITE 100
 OTTAWA, ONTARIO K1J 6Z2
 (613) 842-3434

PROFESSIONAL ENGINEER
J.C.R. LALONDE
 LALONDE ASSOCIATES INC.
 1000 ROUTE 138, SUITE 100
 OTTAWA, ONTARIO K1J 6Z2
 (613) 842-3434

PROFESSIONAL ENGINEER
J.C.R. LALONDE
 LALONDE ASSOCIATES INC.
 1000 ROUTE 138, SUITE 100
 OTTAWA, ONTARIO K1J 6Z2
 (613) 842-3434

PROFESSIONAL ENGINEER
J.C.R. LALONDE
 LALONDE ASSOCIATES INC.
 1000 ROUTE 138, SUITE 100
 OTTAWA, ONTARIO K1J 6Z2
 (613) 842-3434

PROFESSIONAL ENGINEER
J.C.R. LALONDE
 LALONDE ASSOCIATES INC.
 1000 ROUTE 138, SUITE 100
 OTTAWA, ONTARIO K1J 6Z2
 (613) 842-3434

PROFESSIONAL ENGINEER
J.C.R. LALONDE
 LALONDE ASSOCIATES INC.
 1000 ROUTE 138, SUITE 100
 OTTAWA, ONTARIO K1J 6Z2
 (613) 842-3434