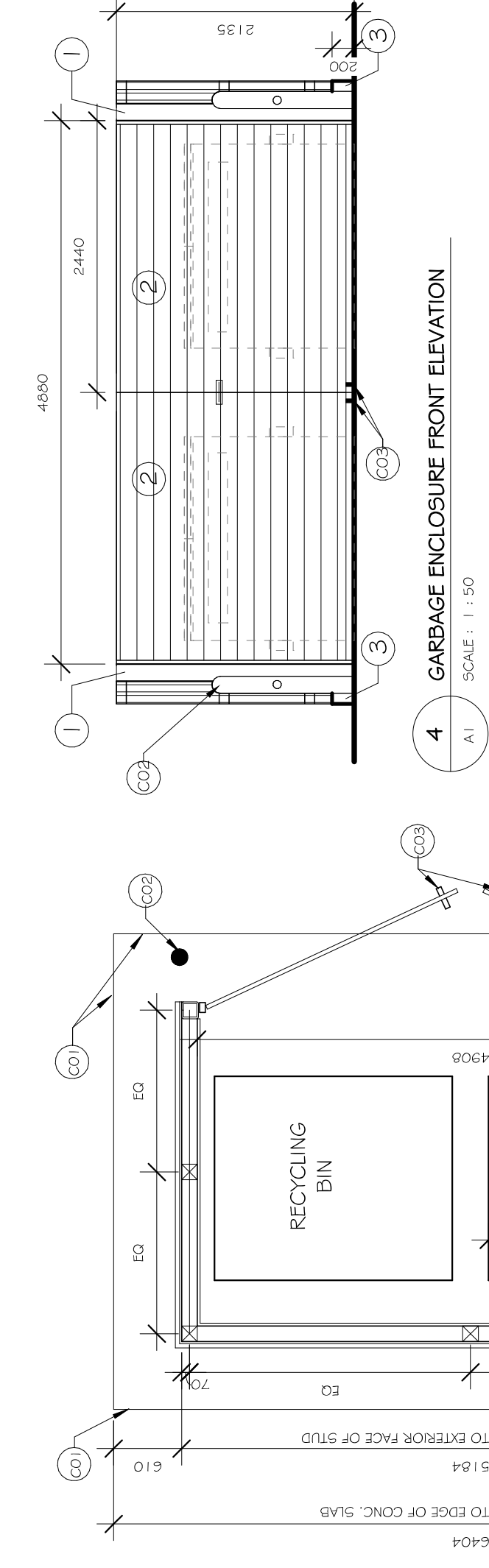


1 SITE LOCATION MAP
SCALE: 1:1,250

ZONING INFORMATION
2375 ST-LAURENT BLVD
WARD: 10
GLOUCESTER-SOUTHGATE: DIANE DEANS
AREA C SUBURBAN PLAN

ZONE PROVISIONS:

REQUIRED	2000 sq.m
MIN. LOT AREA:	6589.8 sq.m
MIN. LOT WIDTH:	51.640 mm
MAX. LOT COVERAGE:	65% (4283.45 sq.m.)
MIN. FRONT YARD SETBACK:	7500 mm
MIN. INTERIOR SIDE YARD:	7500 mm
MIN. REAR YARD:	3500mm
(ABUTTING HYDRO EASEMENT):	2 (13179.86 sq.m.)
MAX. FSI:	0.8 / 100 sq.m GFA
PARKING:	PHASE 1: 930 sq.m. PHASE 2: 0
BICYCLE:	PHASE 1: 930 / 1000 x 0.8 = 7.4 = 8 PHASE 2: 1 / 2000 sq.m GFA PHASE 1: 930 / 2000 = 0.46 = 0



4 GARBAGE ENCLOSURE FRONT ELEVATION
SCALE: 1:150

5 GARBAGE ENCLOSURE SIDE ELEVATION
SCALE: 1:150

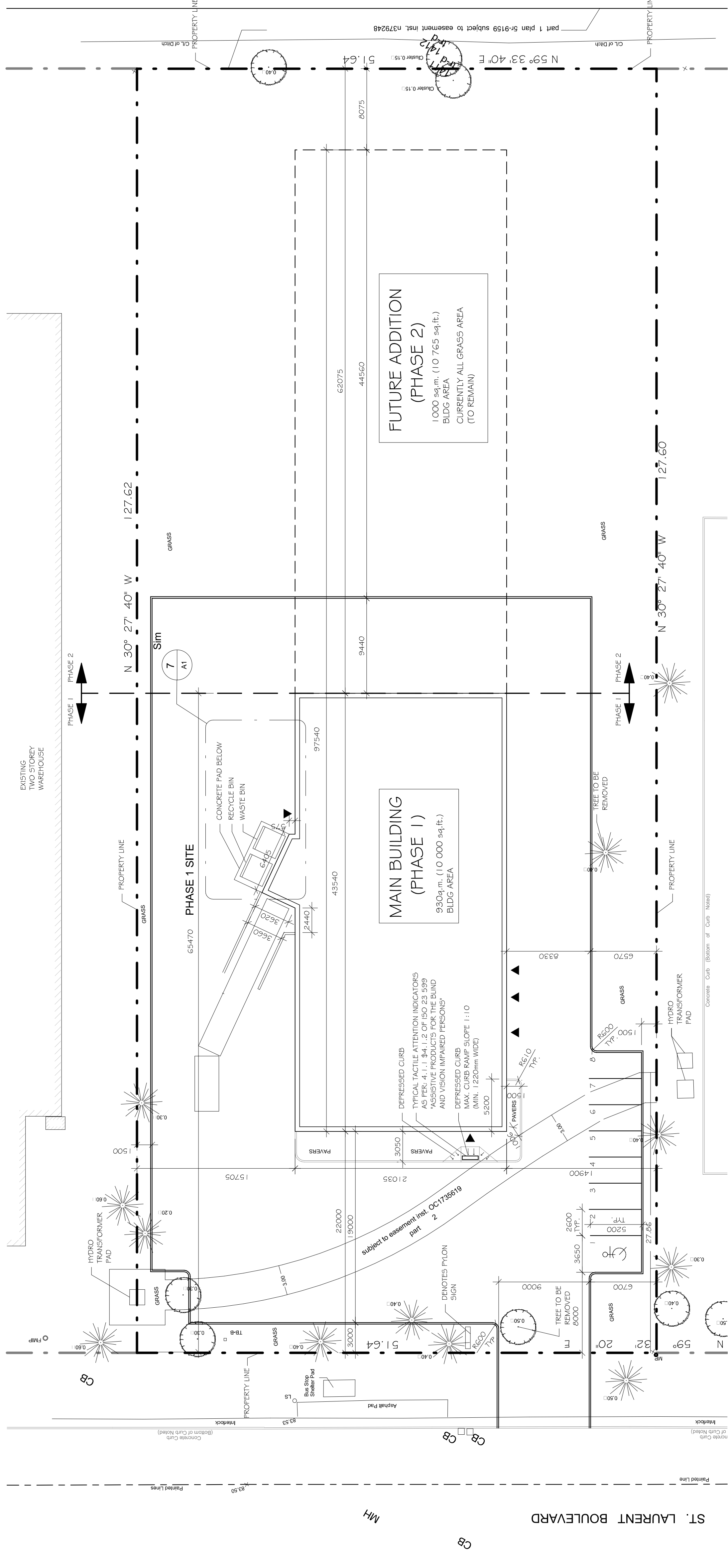
7 GARBAGE ENCLOSURE PLAN VIEW
SCALE: 1:150

MATERIALS:

- PAIN PROTECTED EXPOSED HSS
- EXPOSED TREATED LUMBER WITH STAIN FINISH
- PARKING WITH SACK RUBBED FINISH ON EXPOSED CONCRETE
- CORRUGATED METAL PANEL EQUIVALENT TO: "VICWEST CL 7040" COLOUR - CAMBRIDGE WHITE

CONSTRUCTION NOTES FOR SHEET A1:

- 1 DENOTES EDGE OF CONC. SLAB BELOW.
- 2 ROLLWAD TO LATER DETAIL.
- 3 SUPPORT WHEELS FOR OPERABLE DOOR STABILITY.



2 ARCHITECTURAL SITE PLAN
SCALE: 1:1,250

NOTES:

1. DO NOT SCALE DRAWING.
2. CONTRACTOR TO VERIFY ALL DIMENSIONS AND NOTIFY THE ARCHITECT OF ANY DISCREPANCIES BEFORE ANY WORK COMMENCES.
3. THIS DRAWING SHOULD BE READ IN CONJUNCTION WITH THE LANDSCAPING, STRUCTURAL, ELECTRICAL, MECHANICAL, AND VENTILATION DRAWINGS.
4. VERIFY DIMENSIONS WITH SURVEY DRAWINGS PREPARED BY FARLEY, SMITH & DENIS SURVEYING LIMITED DATED JULY 30, 2008. FILE NO. 280-08.

NO.	DATE	DESCRIPTION	REVISION
1.	JANUARY 2018	ISSUED FOR SITE PLAN CONTROL	
2.	DECEMBER 2017	ISSUED FOR COORDINATION	
3.	SEPTEMBER 2017	ISSUED FOR CLIENT REVIEW	

STAMP

LIFF & TOLOT ARCHITECTS INCORPORATED
1935 HERVASEL ROAD,
OTTAWA, ON, K2G 1P8
TEL: (613) 720-2029
FAX: (613) 720-2029
EMAIL: INFO@LIFFANDTOLOT.COM

JOB TITLE
NEW BUILDING FOR
2465070 ONTARIO LTD
2375 ST-LAURENT BLVD.
OTTAWA, ON

DRAWING TITLE
ARCHITECTURAL SITE PLAN

DATE	REVISION	JOB No.
1/10/2018	AS NOTED	1728
	ALEX. B.	DRAWING
	TINO. T.	CHECKED BY

STAMP

LIFF & TOLOT ARCHITECTS INCORPORATED
1935 HERVASEL ROAD,
OTTAWA, ON, K2G 1P8
TEL: (613) 720-2029
FAX: (613) 720-2029
EMAIL: INFO@LIFFANDTOLOT.COM

JOB TITLE
NEW BUILDING FOR
2465070 ONTARIO LTD
2375 ST-LAURENT BLVD.
OTTAWA, ON

DRAWING TITLE
ARCHITECTURAL SITE PLAN

DATE 1/10/2018
SCALE AS NOTED
DRAWN BY ALEX. B.
CHECKED BY TINO. T.

JOB No. 1728
REVISION
DRAWING AI