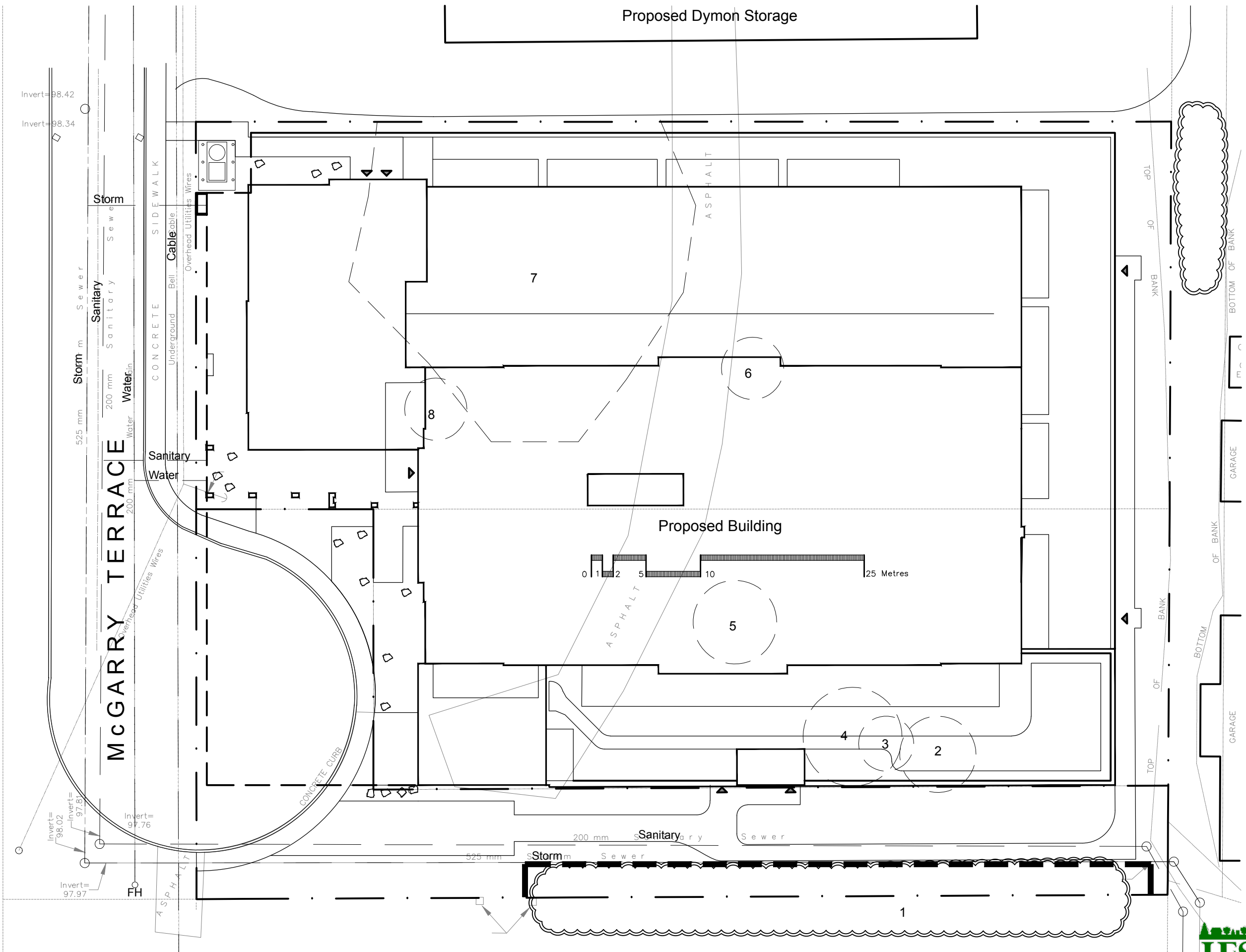
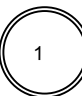
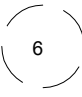

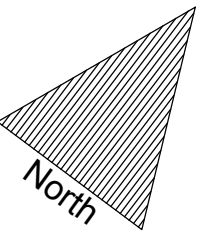


Existing Walmart



TO BE
READ IN
CONJUNCTION
WITH IFS
ASSOCIATES
REPORT
"TREE
CONSERVATION
REPORT
1012/1024
McGarry
Terrace

-  Existing Tree to Remain
-  Existing Tree to be Removed
-  Protection for Existing Trees



TCR
TREE
CONSERVATION
REPORT

Proposed Multi
Unit Residential
Building 1012 /
1024 McGarry
Terrace



P.O. Box 13593, Ottawa, ON K2K 1X6
Telephone: (613) 839-0101
Fax: (613) 839-0114
Website: www.ifsassociates.ca
Urban Forestry & Forest Management Consulting