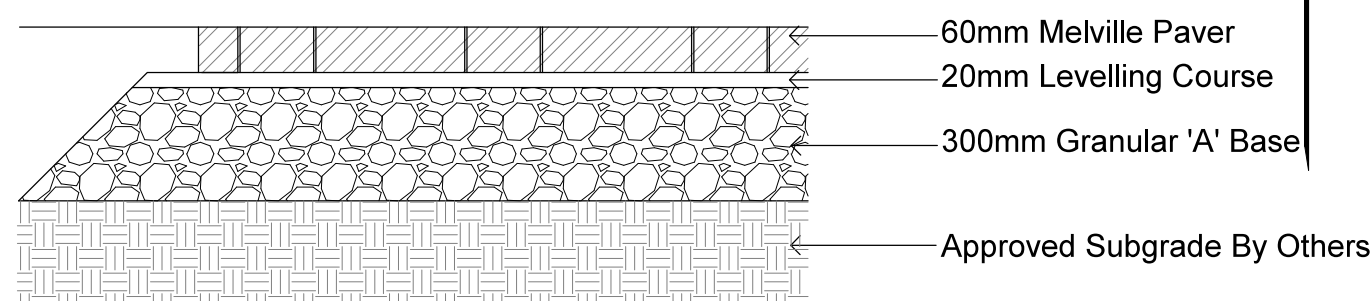


The Landscape Plan is to be read in conjunction with the grading and survey plan. The underground services engineering drawings, construction details and contract documents cannot be used for construction until signed by the landscape architect. Bare root material to be planted in season only. All plant material locations to be staked on site by the landscape contractor and checked by the landscape architect prior to planting. All trees to be preserved on or directly adjacent to the site will be protected. Plant material are to be installed a minimum of 3.0m away from any part of any hydro transformer, 3.0m corridor between a fire hydrant and the curb, a 2.5m radius beside or behind a fire hydrant, 2.0m from any servicing/utility line or structure.

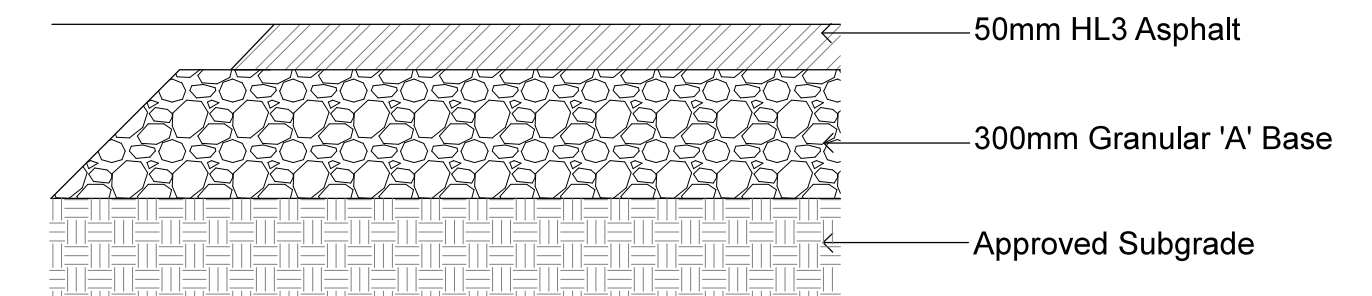
The Landscape Plan is to be read in conjunction with the grading and survey plan. The underground services engineering drawings, construction details and contract documents cannot be used for construction until signed by the landscape architect. Bare root material to be planted in season only. All plant material locations to be staked on site by the landscape contractor and checked by the landscape architect prior to planting. All trees to be preserved on or directly adjacent to the site will be protected. Plant material are to be installed a minimum of 3.0m away from any part of any hydro transformer, 3.0m corridor between a fire hydrant and the curb, a 2.5m radius beside or behind a fire hydrant, 2.0m from any servicing/utility line or structure.

Existing Walmart

Existing Turf To Remain

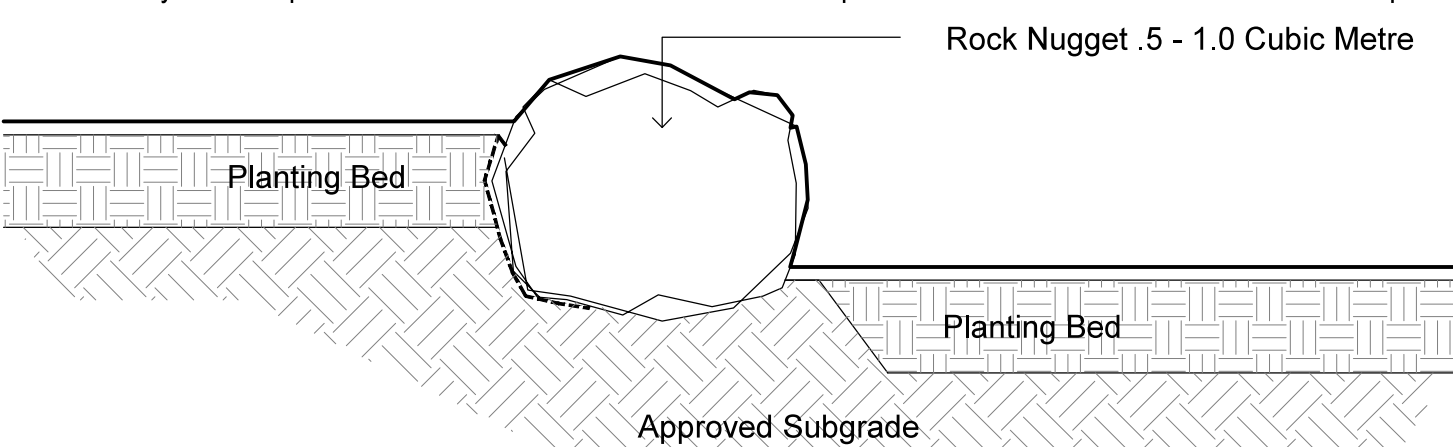



	PEDESTRIAN PAVERS	NTS
	60mm Melville Paver by Permacon or Approved Equal - Colour to Be Selected From Standard Range	

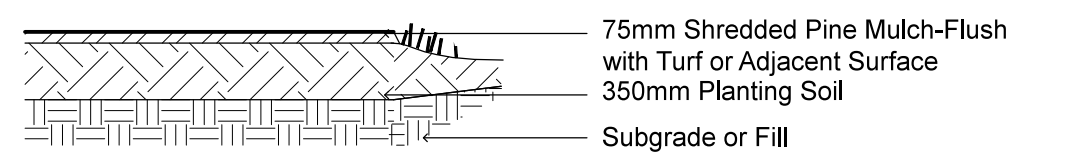


1.5m WIDE ASPHALT PATH NTS

By Landscape Contractor. Review Flares/Radii With Lepine/GJALA PRIOR to Installation/Base Preparation

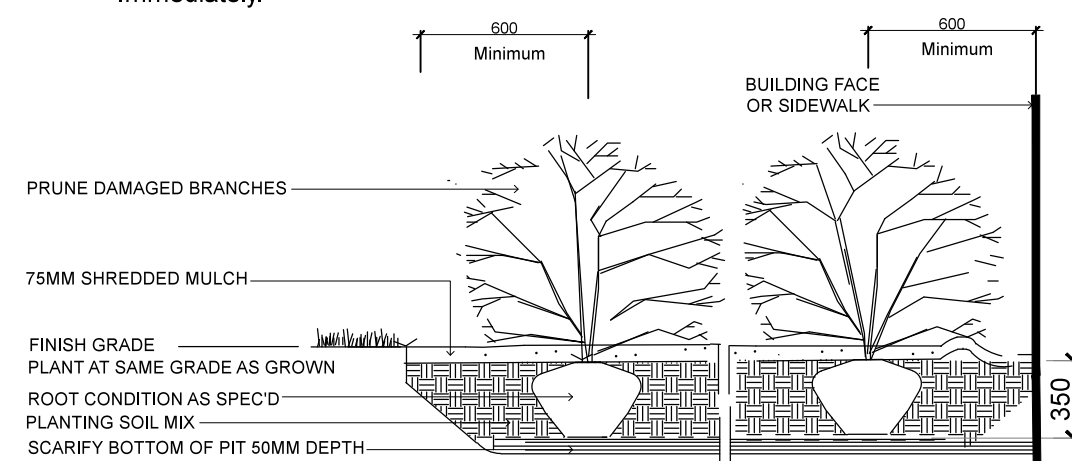


	PLANTING BED BOULDER	NTS
	Locally Acquired Blast Rock/Armour Stone Nuggets - . Minimum .5 cubic Metre, Maximum 1 cubic Metre Each . Set On Subgrade Bury in Soil minimum 100mm.	

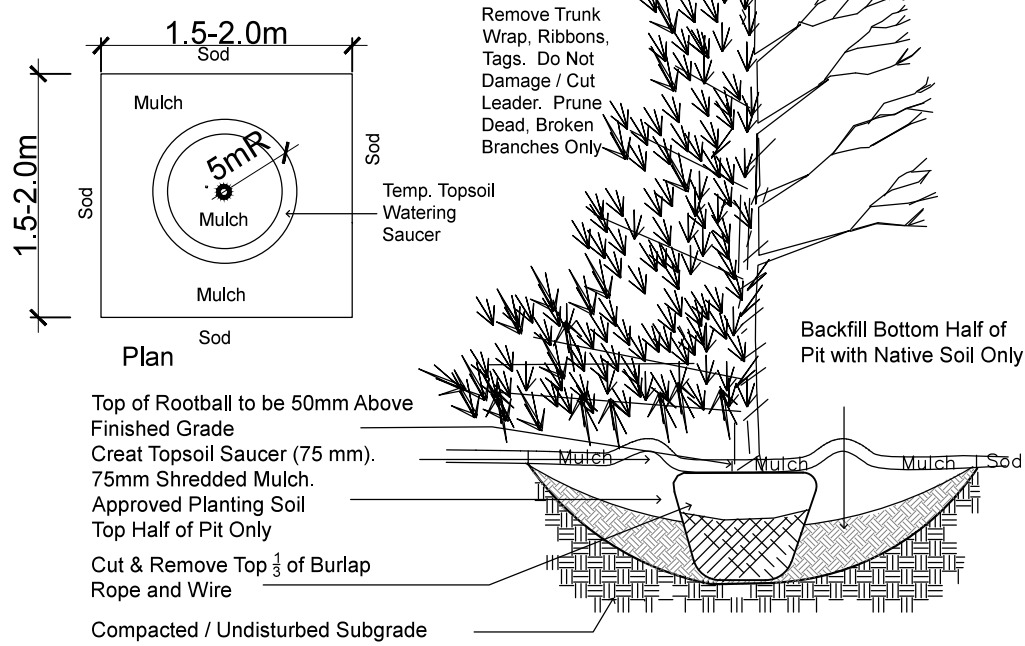


TYPICAL PLANTING BED NTS

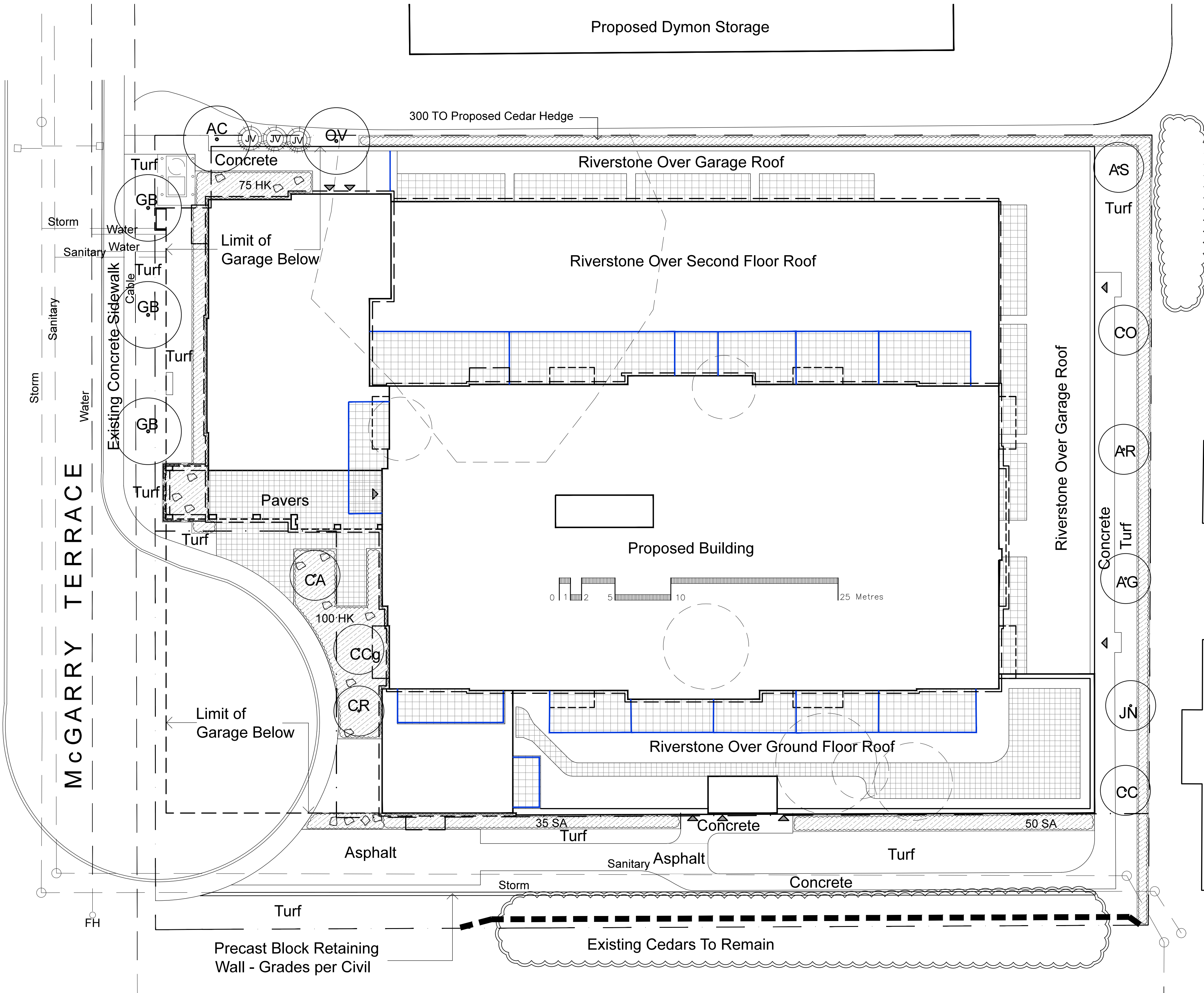
During Excavation/Bed Preparation if Extreme Conditions are Encountered (Water, Rock, Gravel...) that could Effect the Planting, Notify GJALA Immediately.



SHRUB PLANTING NTS



TREE PLANTING

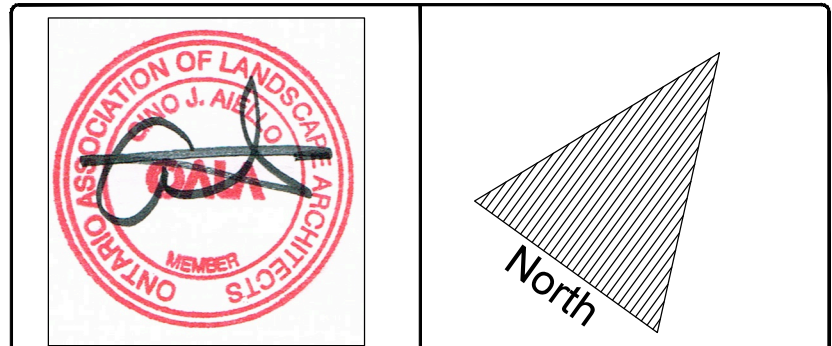


Plant List - Trees -1012-1024 McGarry Terrace Lepine Corp					
Code	Qty.	Botanical Name	Common Name	Size	Condition
AC	1	Amelanchier canadensis	Tree Serviceberry	60mm cal	B + B specimen
AG	1	Aesculus glabra	Ohio Buckeye	60mm cal	B + B specimen
AR	1	Acer rubrum	Red Maple	60mm cal	B + B specimen
AS	1	Acer saccharum	Sugar Maple	60mm cal	B + B specimen
CA	1	Cornus alternifolia	Pagoda Dogwood	60mm cal	B + B specimen
CC	1	Celtis occidentalis	Common Hackberry	60mm cal	B + B specimen
CO	1	Carya cordiformis	Bitternut Hickory	60mm cal	B + B specimen
CR	1	Cornus racemosa	Grey Dogwood	60mm cal	B + B specimen
CCg	1	Crataegus crus-galli 'Inermis'	Thornless Cockspur Hawthorn	60mm cal	B + B specimen
GB	3	Ginkgo biloba	Maidenhair Tree	60mm cal	B + B specimen
JN	1	Juglans nigra	Black Walnut	60mm cal	B + B specimen
OV	1	Ostrya virginiana	Hophornbeam Ironwood	60mm cal	B + B specimen
SArm	1	Sorbus aucuparia 'Rossica Major'	Russian Mountain Ash	60mm cal	B + B specimen
JV	3	Juniperus virginiana	Eastern Red Cedar	1.5m Ht.	B + B specimen
TO	300	Thuja occidentalis arborvitae	White Cedar, nursery grown	60mm cal	Bare Root
Plant List - Shrubs - 1012-1024 McGarry Terrace Lepine Corp					
Code	Qty.	Botanical Name	Common Name	Size	Condition
HK	175	Hypericum kalmianum	St. John's Wort	40cm Ht.	Pot
SA	85	Spiraea alba	Meadowsweet	60cm Ht.	Pot

Drawing Remains the Property of Gino J. Aiello
Landscape Architect. Copyright Reserved by Gino J.
Aiello Landscape Architect. Do Not Use or
Reproduce Without Approval of Gino J. Aiello. Do
Not Use For Construction Unless Signed By
Landscape Architect. Contractor is Responsible for
Verification of Site Locations of all Utilities. Report
any Discrepancies Between Site and Drawing
Immediately to Gino J. Aiello.

-
- Existing Tree to Remain
 - Existing Tree to be Removed
 - Protection for Existing Trees
 - Proposed Coniferous Tree
 - Proposed Deciduous Tree
 - Proposed Planting Bed
 - Proposed Pavers
 - Proposed Boulder

2	For Site Plan Control First Submission	December 21 2017
1	For Review / Coordination	December 2017
No.	Revision	Date
R E V I S I O N S		



Property Owner
LEPINE CORP
201-320 March Road, Ottawa, Ontario, K2K-2E3

Consultant
Gino J. Aiello landscape architect www.gjala.com
gino@gjala.com (613) 852 1343
50 Camelot Drive, Nepean, Ontario K2G 5X8

Project
HOWARD GRANT TERRACE
1012 / 1024 McGarry Terrace Nepean, Ontario

Drawing		Landscape Plan	
Drawn By:	GJA	Sheet Number	L1
Design By:			
Date:	November 2017		
Scale:	1:200		

D07-##-##-####