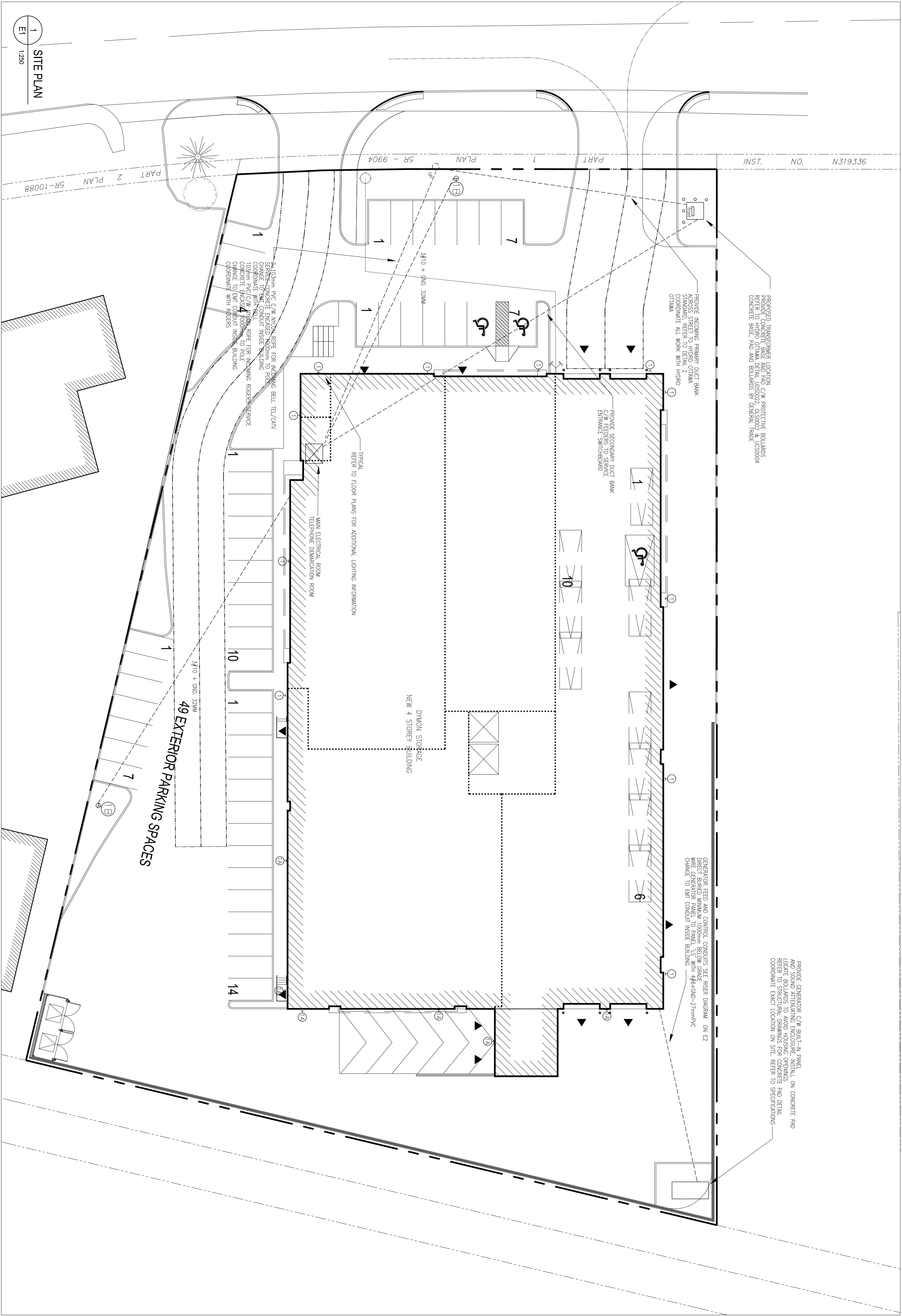










851 INDUSTRIAL AVE



LEGEND	
SYMBOL	DESCRIPTION
	WALL MOUNTED LIGHT FIXTURE - FULL CUT OFF
	RECI LED F3 40K-WM MOULT
	WALL MOUNTED LIGHT FIXTURE - TYPE AS SHOWN
	RECI LED F3 40K-WM MOULT
	LIGHTING POLE - TYPE AS SHOWN
	BSX1 LED F9 40K-BLC MOULT
	PAD MOUNT TRANSFORMER
-----	UNDERGROUND CONDUIT
	UTILITY POLE

THESE ELECTRICAL DRAWINGS MUST BE READ
IN CONJUNCTION WITH ELECTRICAL SPECIFICATION,
GENERATOR SPECIFICATION, ARCHITECTURAL, CIVIL,
STRUCTURAL AND MECHANICAL DRAWINGS AND SPECIFICATION

<div> <div>NOTE:</div> <div> ARCHITECT CODE COMPLIANCE EVALUATION SHALL BE PROVIDED BY OTHERS. THE MECHANICAL/ELECTRICAL SCOPE OF WORK EXCLUDES DESIGN AND SITE REVIEW FOR ARCHITECTURAL CODE COMPLIANCE. </div> </div>			
DATE	REVISION	REF	
2018-01-26	ISSUED FOR SITE PLAN CONTROL	1	
2018-01-15	ISSUED FOR HYDRO DYNAM. APPROVAL	0	

NOTE: ARCHITECT CODE COMPLIANCE EVALUATION SHALL BE PROVIDED BY OTHERS. THE MECHANICAL/ELECTRICAL SCOPE OF WORK EXCLUDES DESIGN AND SITE REVIEW FOR ARCHITECTURAL CODE COMPLIANCE.

[illegible]



Goodkey Weedmark
Consulting Engineers

GOODKEY WEEDMARK & ASSOCIATES LIMITED
1688 Woodward Dr.
Ottawa Ontario
Canada K2C 3B8

613 727-5111 Voice
613 727-5115 Fax
www.gwdl.com
Web

Project name:
Novel data project

Seal/Stamp



The seal is circular with a double-lined border. The outer ring contains the text "PROVINCE OF ONTARIO" at the top and "ENGINEER" at the bottom. The center features a stylized "PE" monogram. Below the monogram, the text "LICENSED PROFESSIONAL ENGINEER" is written in a semi-circle. In the middle of the seal, the following information is printed: "D. B. VYAS", "100131310", and "Exp. 31, 2018".

**DYMON SELF-STORAGE
851 INDUSTRIAL AVENUE
OTTAWA, ON**

Drawing title/Title du dessin

**ELECTRICAL
LEGEND, SITE PLAN
AND DETAILS**

APPROVED ☐ REFUSED ☐

THIS ____ DAY OF _____, 20 ____

DON HERMEYER, MCIP, RPP, MANAGER
DEVELOPMENT REVIEW SOUTH
PLANNING, INFRASTRUCTURE AND