

LEGEND:
 AP - ALUMINUM PANEL
 CM - CORRUGATED METAL PANEL
 VP - VISION PANEL
 SP - SPANDREL PANEL
 BV - BRICK VENEER
 MS1 - STONE MASONRY
 MS2 - BRICK VENEER

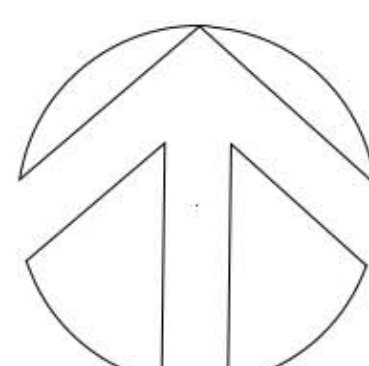
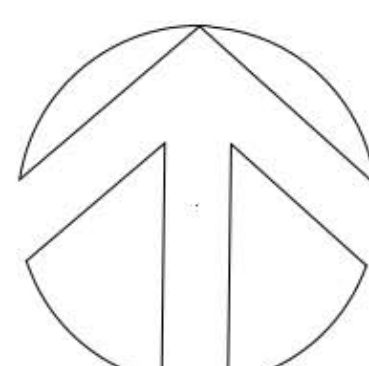
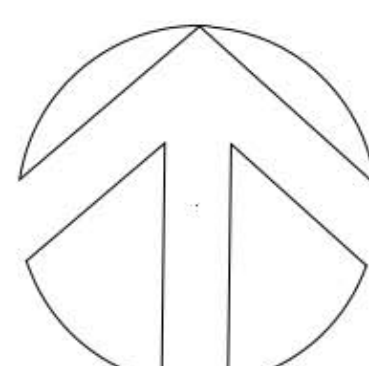
MATERIALS LEGEND
 PAF - PRE-FINISHED ALUMINUM FASCIA
 AP - ALUMINUM PANEL
 ASP - ASPHALT SHINGLE
 CW - CURTAIN WALL
 CWC - CURTAIN WALL CAP
 PW - PUNCHED WINDOW
 MS-1 - ARRISCRRAFT SHADOW STONE MASONRY
 MS-2 - ARRISCRRAFT SHADOW STONE MASONRY
 MS-3 - 90MM ADAIR MARBLE NATURAL STONE ROUGHED FACE
 ML - PRE-MANUFACTURER MECH LOUVRE (CO-ORDINATE W/ MECHANICAL DWGS.)
 MV - MASONRY VENEER
 PCS1 - 90MM PRECAST CONCRETE SILL
 PCC - 90MM PRECAST CONCRETE CAP
 PCH - PRECAST HEADER
 PMCF - PRE-FINISHED METAL CAP FLASHING
 PMF - PRE-FINISHED METAL FLASHING
 PMV - PRE-FINISHED METAL LOUVER
 PRV - PRE-FINISHED METAL ROOF VENT
 PRG - PARADING (ALUMINUM)
 SP - SCUPPER (ALUMINUM)
 PCM - PREFINISHED CORRUGATED METAL
 ML - MECHANICAL LOUVER
 NOTE: COLORS TO BE SELECTED BY ARCHITECT

THIS DRAWING MUST NOT BE SCALED.
 THE CONTRACTOR SHALL VERIFY ALL LEVELS, DATUMS AND DIMENSIONS PRIOR TO COMMENCEMENT OF WORK. ALL ERRORS AND OMISSIONS MUST BE REPORTED TO VINCENT COLIZZA ARCHITECT INC. IMMEDIATELY.
 ANY REVISIONS TO THE DOCUMENTS OR CHANGES PRIOR TO, DURING, OR AFTER CONSTRUCTION THAT ARE DONE WITHOUT WRITTEN AUTHORIZATION FROM VINCENT COLIZZA ARCHITECT INC. WILL NOT BE THE RESPONSIBILITY OF VINCENT COLIZZA ARCHITECT INC.
 THIS DRAWING, IN ALL FORMS, ELECTRONIC OR HARD COPY IS THE EXCLUSIVE PROPERTY OF VINCENT COLIZZA ARCHITECT INC. AND MUST NOT BE REPRODUCED WITHOUT WRITTEN PERMISSION.
 COPYRIGHT ©

No.	DESCRIPTION	DATE	CHD
4	ISSUED FOR MINOR VARIANCE	2017/11/27	VCP
3	ISSUED FOR SITE PLAN APPLICATION	2017/11/27	VCP
2	ISSUED FOR SITE PLAN APPLICATION	2017/11/15	VCP
1	ISSUED FOR CITY OF OTTAWA PRELIMINARY REVIEW	2017/06/26	VCP

REVISIONS

CONTRACTOR SHALL CHECK AND VERIFY ALL DIMENSIONS AND REPORT ANY OMISSIONS OR DISCREPANCIES TO THE ARCHITECT BEFORE PROCEEDING WITH THE WORK.
 DO NOT SCALE THE DRAWINGS

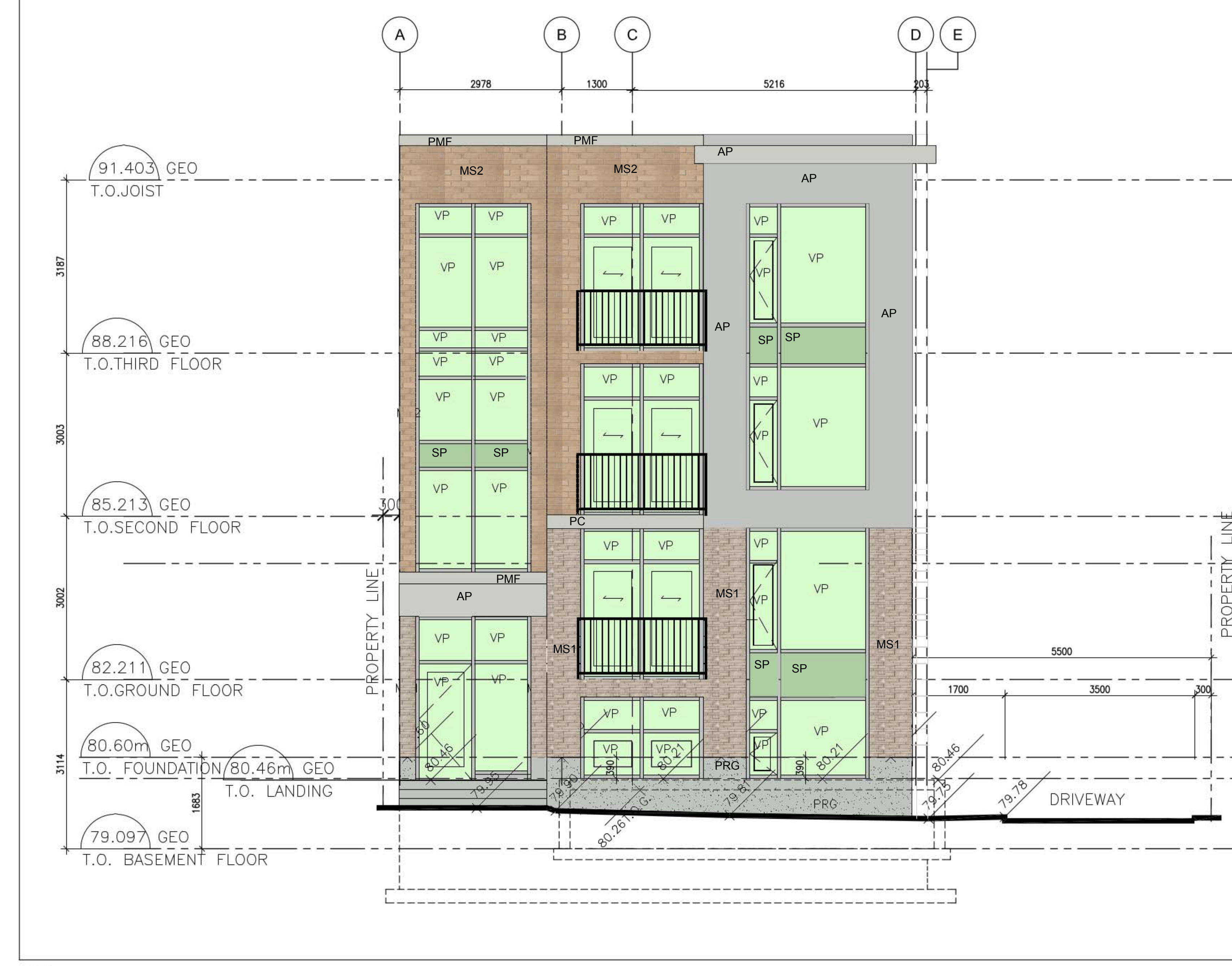
	THIS DRAWING SHALL NOT BE USED FOR CONSTRUCTION PURPOSES UNTIL SIGNED BY THE ARCHITECT.
	DATE 2017-06-26
	DRAWN JV
	DATE 2017-06-26
	CHECKED VPC
	DATE PRINTED

VINCENT P. COLIZZA ARCHITECT INCORPORATED

603 CUMMINGS AVE. OTTAWA, ONTARIO

DWG. TITLE
 WEST ELEVATION (FRONT)
 EAST ELEVATION (REAR)

SCALE 1:50	DWG. NO. A302
PROJ. NO. 1217	



2 WEST ELEVATION (FRONT)
 A302 SCALE: 1:50



1 EAST ELEVATION (REAR)
 A302 SCALE: 1:50

Drawing name: X:\ODWG-VPC\1217-603 Cummings Avenue\2-Working Drawings\1217-A301-ELEVATION.dwg Nov 29, 2017 11:15am