

METRIC
DISTANCES AND ELEVATIONS SHOWN ON THIS PLAN ARE IN METRES
AND CAN BE CONVERTED TO FEET BY DIVIDING BY 0.3048

TOPOGRAPHIC SURVEY OF
PART OF LOT 17
CONCESSION 3 (Rideau Front)
GEOGRAPHIC TOWNSHIP OF NEPEAN
Now CITY OF OTTAWA

SCALE 1 : 400
0 10 20 40 metres
FAIRHALL, MOFFATT & WOODLAND LIMITED
ONTARIO LAND SURVEYORS

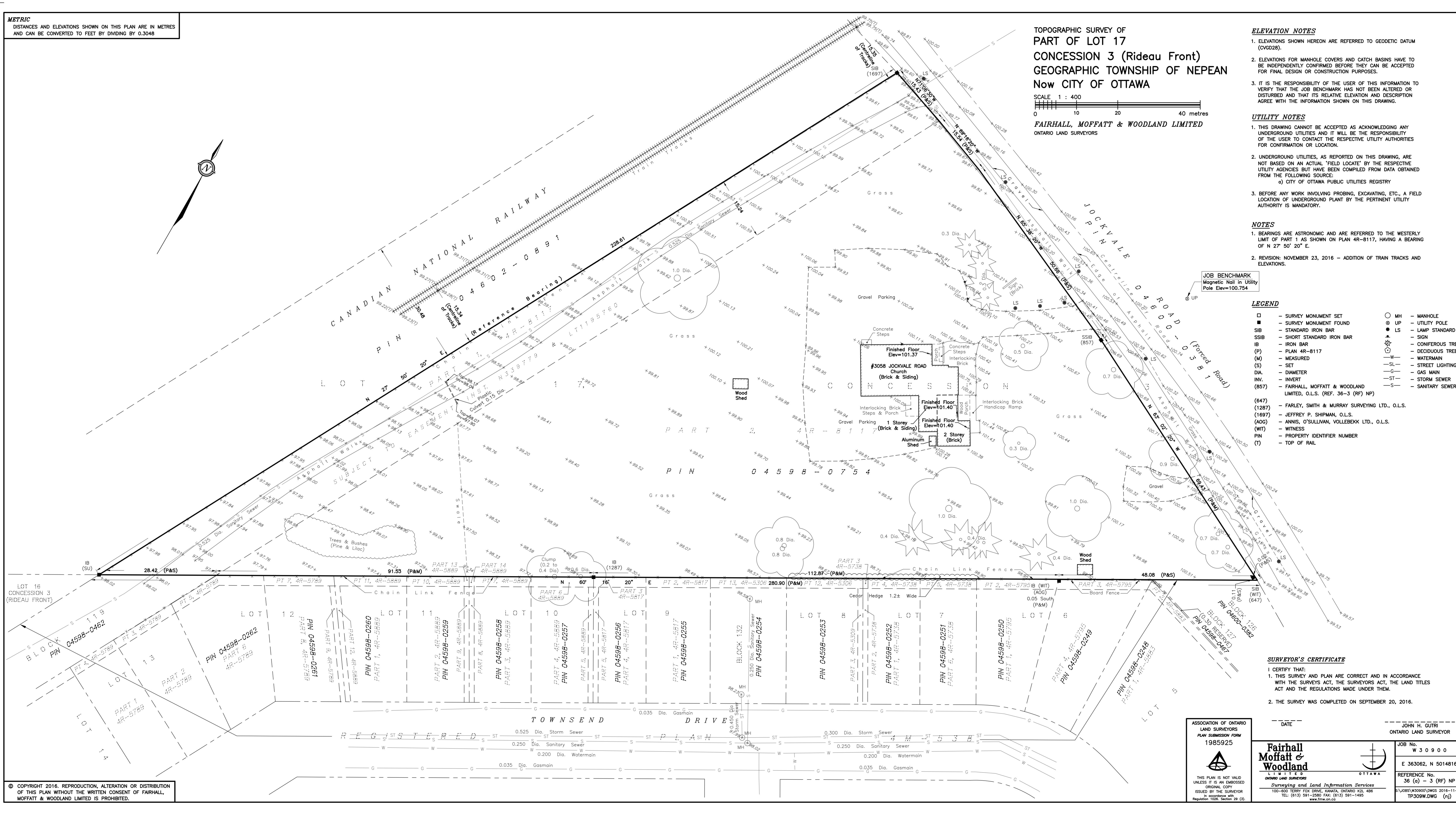
- ELEVATION NOTES**
- ELEVATIONS SHOWN HEREON ARE REFERRED TO GEODETIC DATUM (CGVD28).
 - ELEVATIONS FOR MANHOLE COVERS AND CATCH BASINS HAVE TO BE INDEPENDENTLY CONFIRMED BEFORE THEY CAN BE ACCEPTED FOR FINAL DESIGN OR CONSTRUCTION PURPOSES.
 - IT IS THE RESPONSIBILITY OF THE USER OF THIS INFORMATION TO VERIFY THAT THE JOB BENCHMARK HAS NOT BEEN ALTERED OR DISTURBED AND THAT ITS RELATIVE ELEVATION AND DESCRIPTION AGREE WITH THE INFORMATION SHOWN ON THIS DRAWING.

- UTILITY NOTES**
- THIS DRAWING CANNOT BE ACCEPTED AS ACKNOWLEDGING ANY UNDERGROUND UTILITIES AND IT WILL BE THE RESPONSIBILITY OF THE USER TO CONTACT THE RESPECTIVE UTILITY AUTHORITIES FOR CONFIRMATION OR LOCATION.
 - UNDERGROUND UTILITIES, AS REPORTED ON THIS DRAWING, ARE NOT BASED ON AN ACTUAL 'FIELD LOCATE' BY THE RESPECTIVE UTILITY AGENCIES BUT HAVE BEEN COMPILED FROM DATA OBTAINED FROM THE FOLLOWING SOURCE:
a) CITY OF OTTAWA PUBLIC UTILITIES REGISTRY
 - BEFORE ANY WORK INVOLVING PROBING, EXCAVATING, ETC., A FIELD LOCATION OF UNDERGROUND PLANT BY THE PERTINENT UTILITY AUTHORITY IS MANDATORY.

- NOTES**
- BEARINGS ARE ASTRONOMIC AND ARE REFERRED TO THE WESTERLY LIMIT OF PART 1 AS SHOWN ON PLAN 4R-8117, HAVING A BEARING OF N 27° 50' 20" E.
 - REVISION: NOVEMBER 23, 2016 - ADDITION OF TRAIN TRACKS AND ELEVATIONS.

JOB BENCHMARK
Magnetic Nail in Utility
Pole Elev=100.754

- LEGEND**
- | | | | |
|--------|--|---|----------------------|
| □ | - SURVEY MONUMENT SET | ○ | MH - MANHOLE |
| ■ | - SURVEY MONUMENT FOUND | ● | UP - UTILITY POLE |
| ▣ | - STANDARD IRON BAR | ● | LS - LAMP STANDARD |
| ▤ | - SHORT STANDARD IRON BAR | ● | IB - IRON BAR |
| ▥ | - IRON BAR | ● | SN - SIGN |
| (P) | - PLAN 4R-8117 | ● | CT - CONIFEROUS TREE |
| (W) | - MEASURED | ● | DT - DECIDUOUS TREE |
| (S) | - SET | — | W - WATERMAIN |
| DIA. | - DIAMETER | — | SL - STREET LIGHTING |
| INV. | - INVERT | — | G - GAS MAIN |
| (657) | - FAIRHALL, MOFFATT & WOODLAND LIMITED, O.L.S. (REF. 36-3 (RF) NP) | — | ST - STORM SEWER |
| (647) | - FARLEY, SMITH & MURRAY SURVEYING LTD., O.L.S. | — | S - SANITARY SEWER |
| (1287) | - JEFFREY P. SHIPMAN, O.L.S. | | |
| (1697) | - ANNIS, O'SULLIVAN, VOLLEBECK LTD., O.L.S. | | |
| (AOC) | - WITNESS | | |
| (WIT) | - PROPERTY IDENTIFIER NUMBER | | |
| PIN | - TOP OF RAIL | | |
| (T) | | | |



SURVEYOR'S CERTIFICATE

I CERTIFY THAT:

- THIS SURVEY AND PLAN ARE CORRECT AND IN ACCORDANCE WITH THE SURVEYS ACT, THE SURVEYORS ACT, THE LAND TITLES ACT AND THE REGULATIONS MADE UNDER THEM.
- THE SURVEY WAS COMPLETED ON SEPTEMBER 20, 2016.

ASSOCIATION OF ONTARIO LAND SURVEYORS
PLAN SUBMISSION FORM
1985925

DATE _____

JOHN H. GUTRI
ONTARIO LAND SURVEYOR

Fairhall Moffatt & Woodland
L I M I T E D
ONTARIO LAND SURVEYORS

Surveying and Land Information Services
100-600 TERRY FOX DRIVE, KANATA, ONTARIO K2L 4B6
TEL: (613) 591-2360 FAX: (613) 591-1495
www.fmw.com.ca

JOB No. W 3 0 9 0 0
E 363062, N 5014816
REFERENCE No. 36 (a) - 3 (RF) NP
S:\J085\W30900\DWG5 2016-11-25
TP309.DWG (nj)

© COPYRIGHT 2016. REPRODUCTION, ALTERATION OR DISTRIBUTION OF THIS PLAN WITHOUT THE WRITTEN CONSENT OF FAIRHALL, MOFFATT & WOODLAND LIMITED IS PROHIBITED.