



IT IS THE RESPONSIBILITY OF THE APPROPRIATE CONTRACTOR TO CHECK AND VERIFY ALL DIMENSIONS ON SITE AND TO REPORT ALL ERRORS AND/OR OMISSIONS TO THE ARCHITECT.

ALL CONTRACTORS MUST COMPLY WITH ALL PERTINENT CODES AND BY-LAWS.

THIS DRAWING MAY NOT BE USED FOR CONSTRUCTION UNTIL SIGNED BY THE ARCHITECT.

DO NOT SCALE DRAWINGS.

NOTATION SYMBOLS:

Diagram illustrating the components of a drawing title block and their corresponding information:

- INDICATES DRAWING NOTES, LISTED ON EACH SHEET.** (Symbol: Circle with '00')
- INDICATES ASSEMBLY TYPE; REFER TO TYPICAL ASSEMBLIES SCHEDULE.** (Symbol: Diamond with '00')
- INDICATES WINDOW TYPE; REFER TO WINDOW ELEVATIONS AND DETAILS ON A900 SERIES.** (Symbol: Diamond with '00')
- INDICATES DOOR TYPE; REFER TO DOOR SCHEDULE AND DETAILS ON A900 SERIES.** (Symbol: Diamond with '000')
- DETAIL NUMBER** (Symbol: Circle with '00')
- TITLE** (Symbol: Circle with '00')
- SCALE** (Symbol: Circle with '00')
- DETAIL REFERENCE PAGE** (Symbol: Circle with '00')
- DETAIL CROSS REFERENCE PAGE** (Symbol: Circle with '00')

GENERAL NOTES:

A	REFER TO TYPICAL ASSEMBLIES SHEET FOR WALL, PARTITION, ROOF CEILING & FLOOR TYPES.
B	FOR DOOR TYPES AND HARDWARE REQUIREMENTS REFER TO DOOR SCHEDULE ON A900 SERIES.
C	ALL INTERIOR DIMENSIONS ARE TAKEN FROM THE FACE OF STUD.
D	ALL EXTERIOR DIMENSIONS ARE TAKEN FROM THE FACE OF STUD.
E	ALL EXTERIOR WALLS ARE TO BE TYPE 'W1' UNLESS NOTED OTHER WISE.
F	ALL INTERIOR PARTITIONS ARE TO BE TYPE 'P1' UNLESS NOTED OTHER WISE.
G	ALL REINFORCED CONCRETE SUSPENDED SLABS, COLUMNS & BEAMS HAVE A MIN. FRR OF 1.5 HRS (AS DETERMINED BY CBC 58-2) UNLESS OTHERWISE STATED.

[illegible]

Figure 1

--	--	--

2	ISSUED FOR SITE PLAN CONTROL REVISED CONCEPT	Nov 13,17
---	--	-----------

1	ISSUED FOR SITE PLAN CONTROL	June 06, 17
2	DESCRIPTION	DATE

REVISIONS:

D07-12-14-0076

IT IS THE RESPONSIBILITY OF THE APPROPRIATE
CONTRACTOR TO CHECK AND VERIFY ALL DIMENSIONS
ON SITE AND TO REPORT ALL ERRORS AND/OR
OMISSIONS TO THE ARCHITECT.

ALL CONTRACTORS MUST COMPLY WITH ALL
PERTINENT CODES AND BY-LAWS.

THIS DRAWING MAY NOT BE USED FOR CONSTRUCTION
UNTIL SIGNED BY THE ARCHITECT.

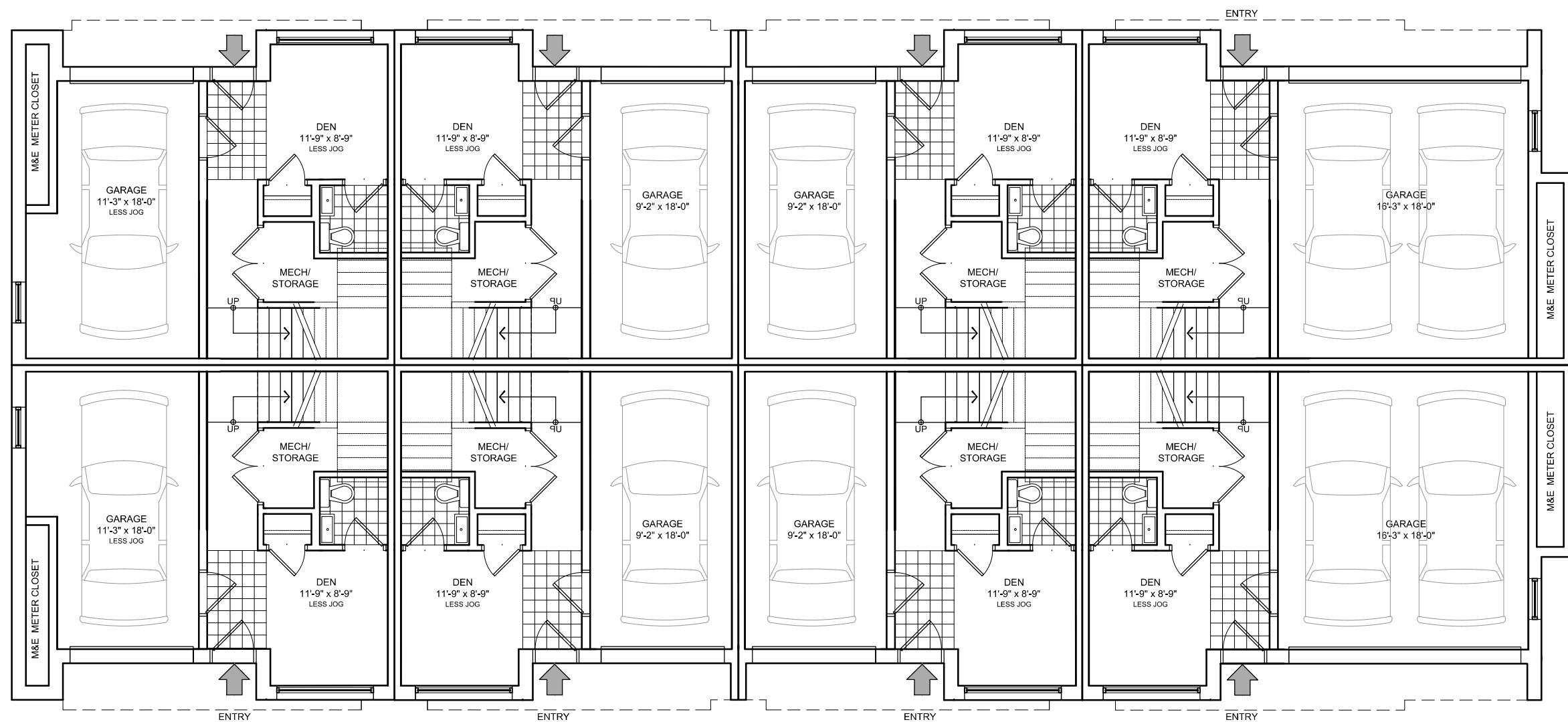
DO NOT SCALE DRAWINGS.

NOTATION SYMBOLS:

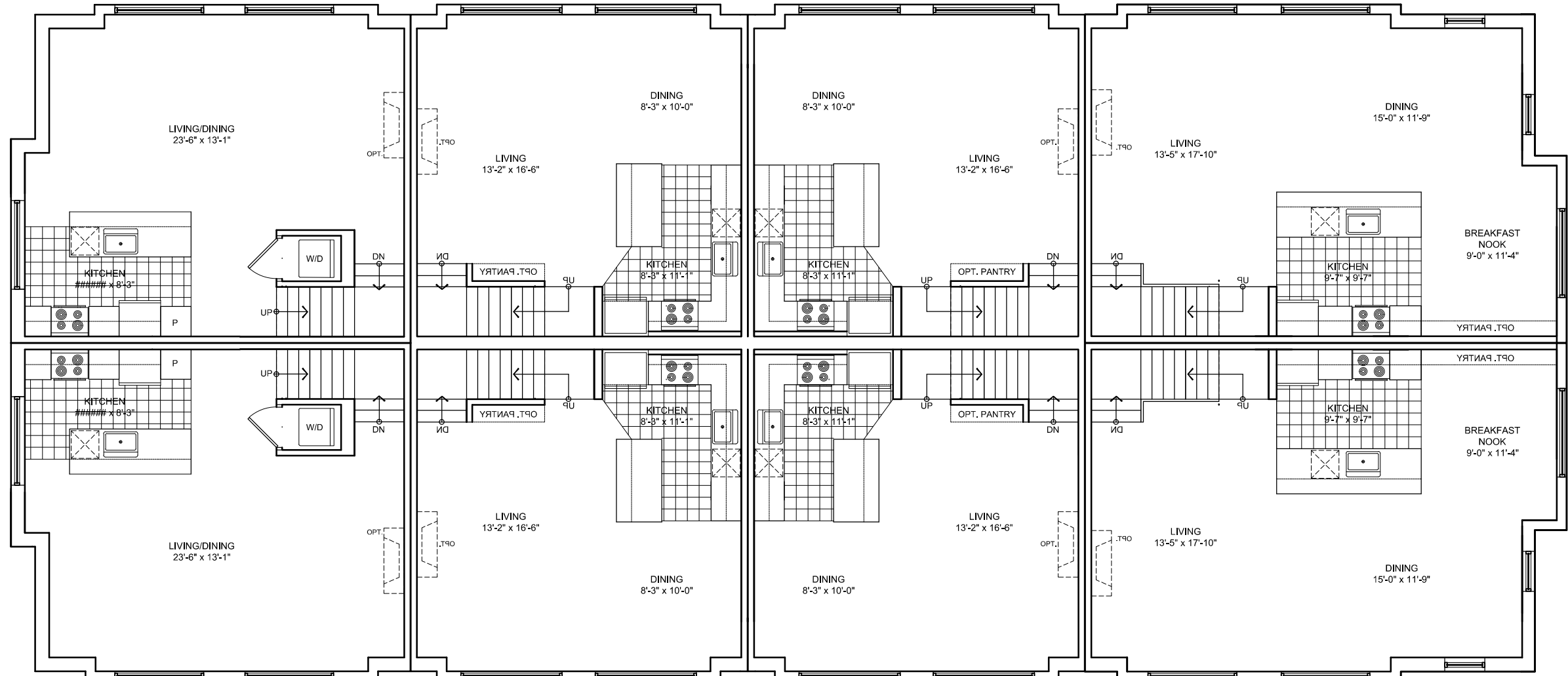
-
- Diagram illustrating the structure of a drawing title block with callouts for various fields:
- INDICATES DRAWING NOTES, LISTED ON EACH SHEET.
 - INDICATES ASSEMBLY TYPE; REFER TO TYPICAL ASSEMBLIES SCHEDULE.
 - INDICATES WINDOW TYPE; REFER TO WINDOW ELEVATIONS AND DETAILS ON A900 SERIES.
 - INDICATES DOOR TYPE; REFER TO DOOR SCHEDULE AND DETAILS ON A900 SERIES.
 - DETAIL NUMBER
 - TITLE
 - SCALE
 - DETAIL REFERENCE PAGE
 - DETAIL CROSS REFERENCE PAGE

GENERAL NOTES:

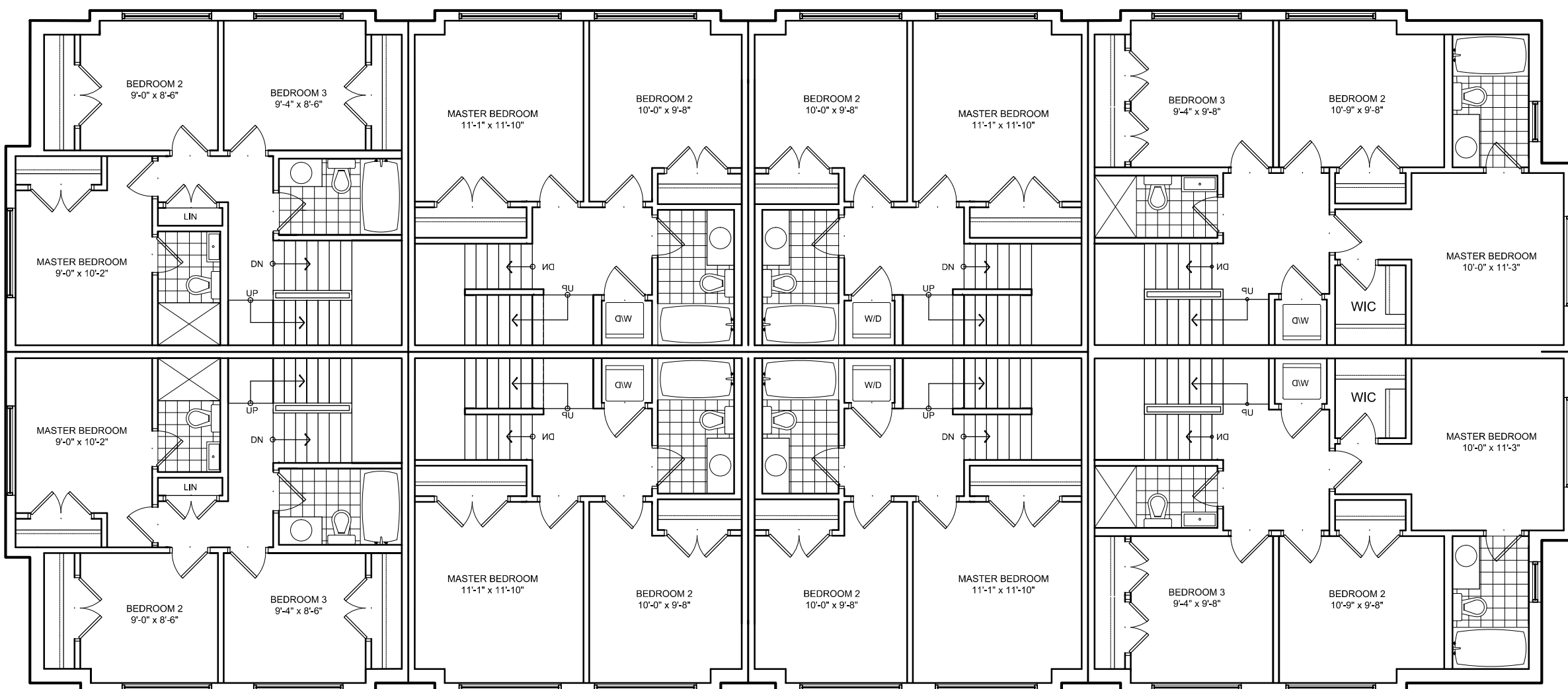
- | | |
|---|--|
| A | REFER TO TYPICAL SPECIFICATIONS SHEET FOR WALL, PARTITION, ROOF CEILING & FLOOR TYPES. |
| B | FOR DOOR TYPES AND HARDWARE REQUIREMENTS REFER TO DOOR SCHEDULE ON A900 SERIES. |
| C | ALL INTERIOR DIMENSIONS ARE TAKEN FROM THE FACE OF STUD |
| D | ALL EXTERIOR DIMENSIONS ARE TAKEN FROM THE FACE OF STUD |
| E | ALL EXTERIOR WALLS ARE TO BE TYPE "W1" UNLESS NOTED OTHERWISE. |
| F | ALL INTERIOR PARTITIONS ARE TO BE TYPE "P1" UNLESS NOTED OTHERWISE. |
| G | ALL REINFORCED CONCRETE SUPERIMPOSED SLABS, CHAIRS & BEAMS HAVE A MIN. FRR OF 1:1HS (AS DETERMINED BY CBC SB-2) UNLESS OTHERWISE STATED. |



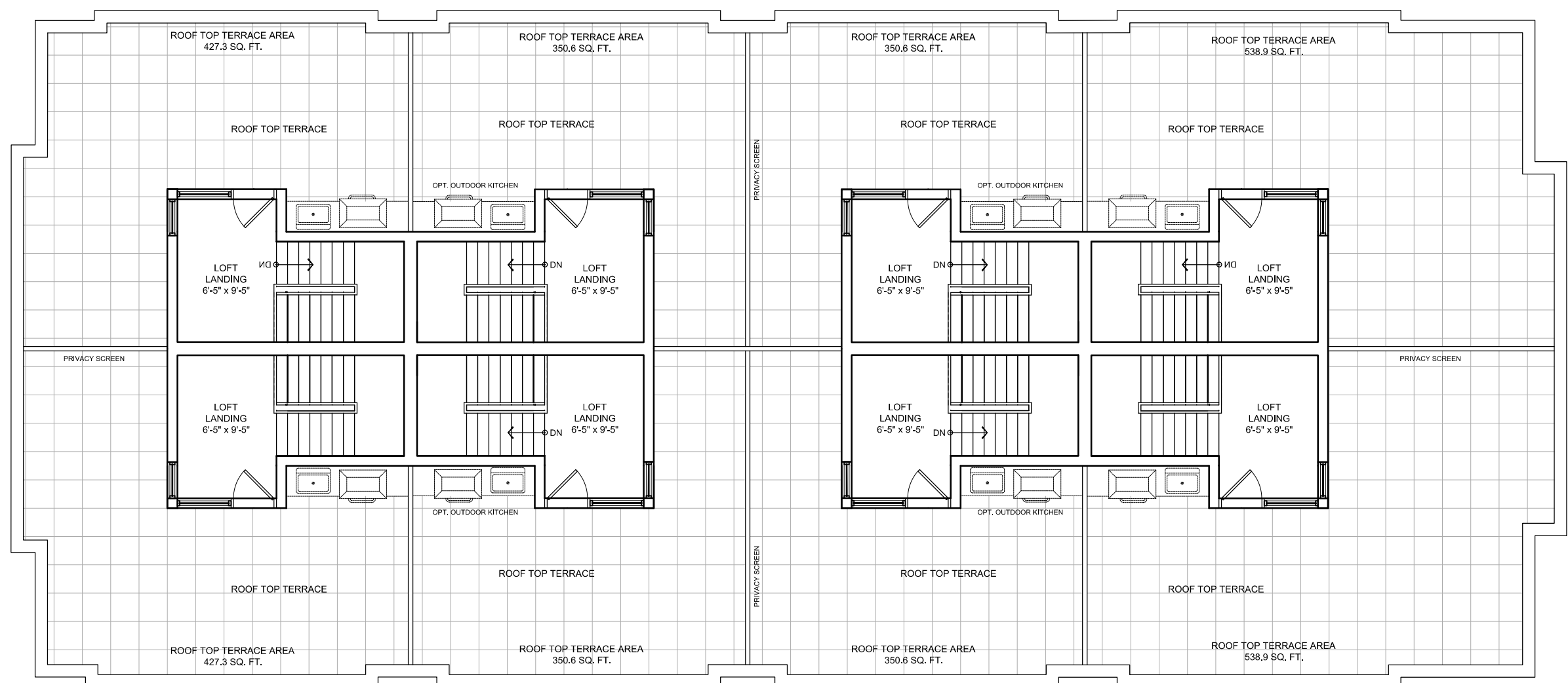
GROUND FLOOR PLAN



SECOND FLOOR PLAN



THIRD FLOOR PLAN



ROOF PLAN

BLOCK 1

BLOCK 2, 3, 4, 6 & 7 (SIMILAR)

APPROVED ☐ REFUSED ☐

THIS ____ DAY OF _____, 20____

DERRICK MOODIE
MANAGER, DEVELOPMENT REVIEW - WEST
PLANNING, INFRASTRUCTURE & ECONOMIC
DEVELOPMENT DEPARTMENT, CITY OF OTTAWA

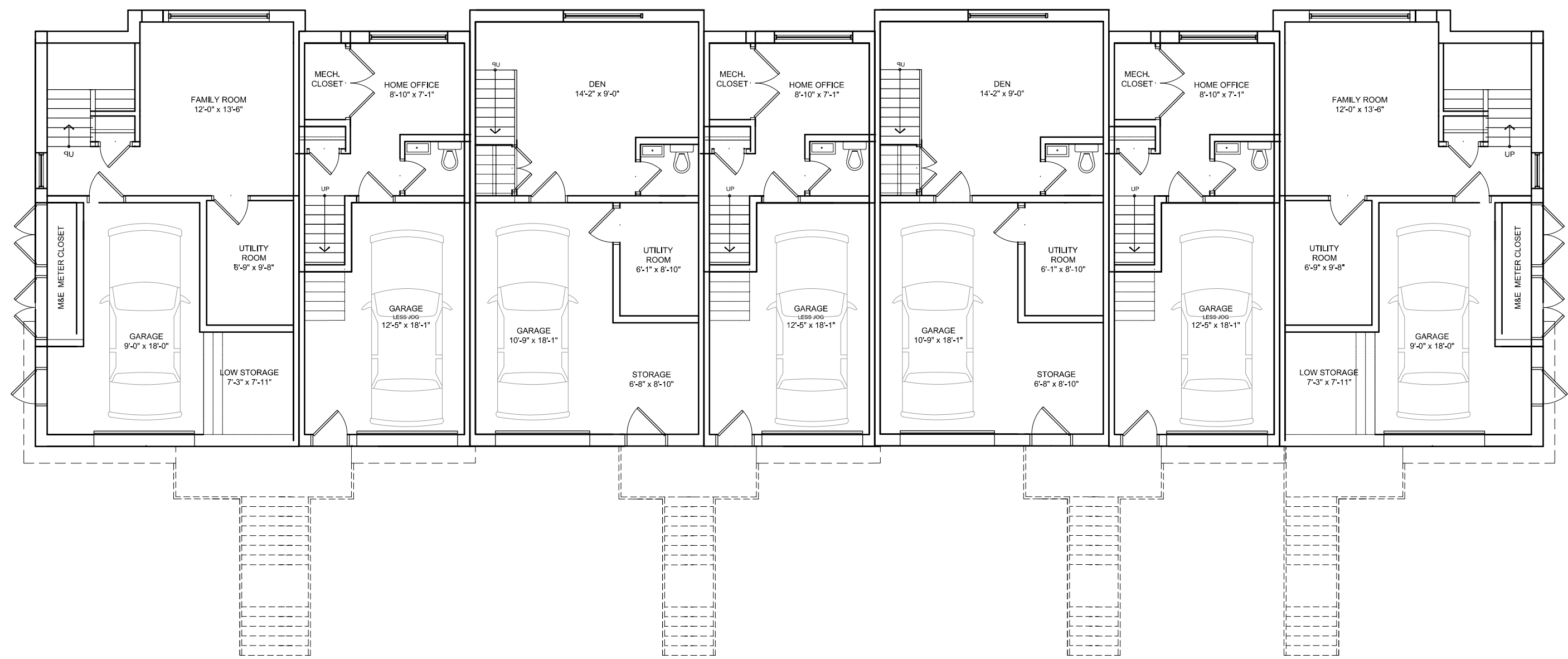
DRAWN:	CHECKED:
SA	SA

DRAWN: RV	CHECKED: LL
SCALE:	SHEET No.

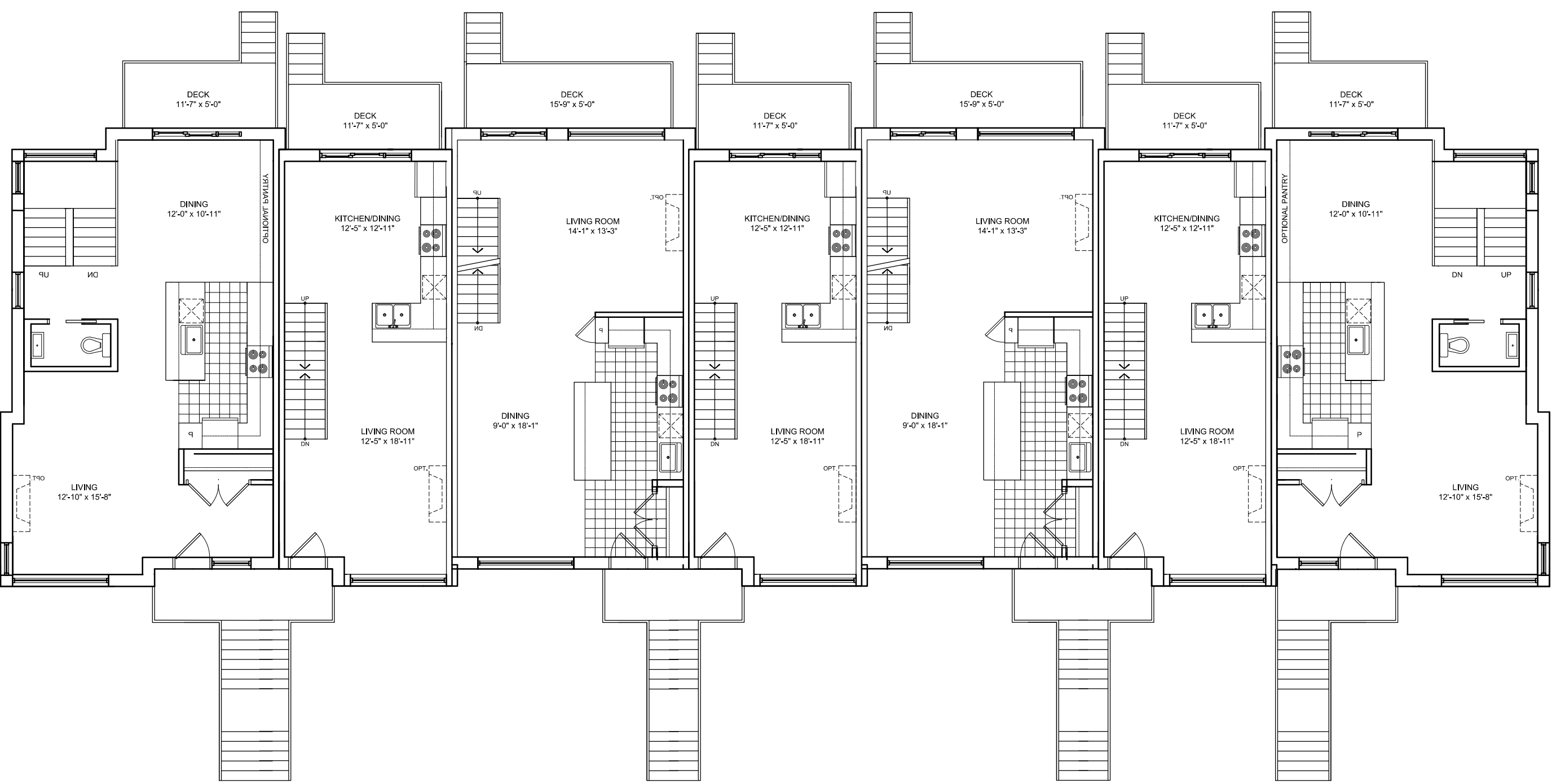
1 : 100	A-02
PROJECT No. 1020	

PLOT DATE: Friday, November 24, 2017

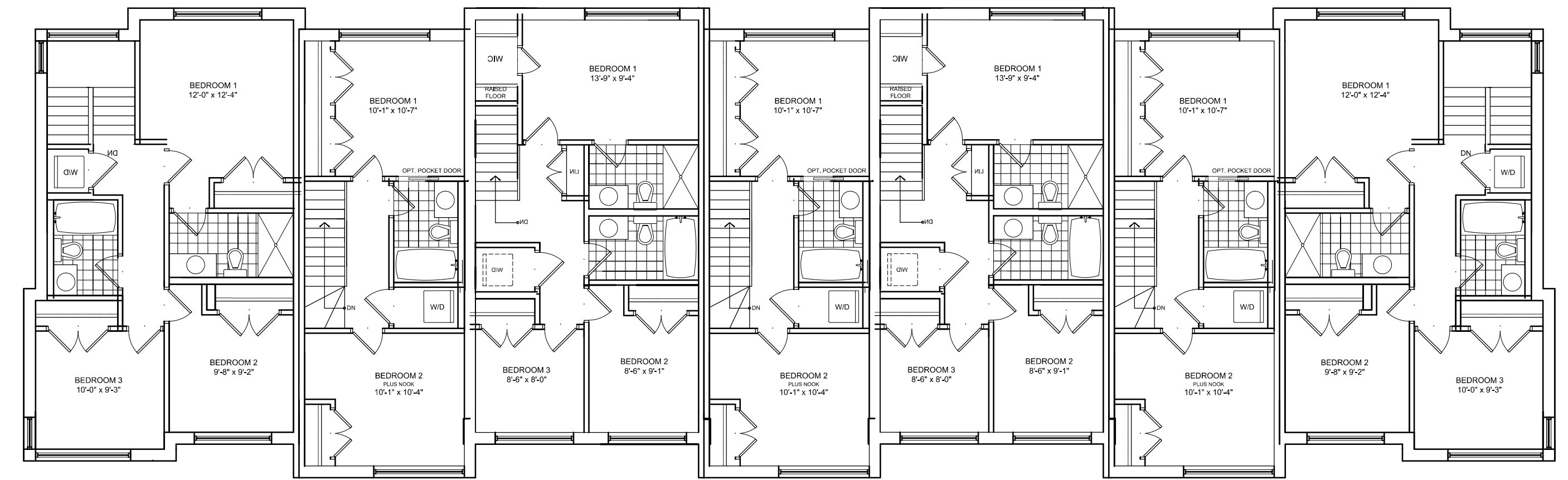
D07-12-14-0076



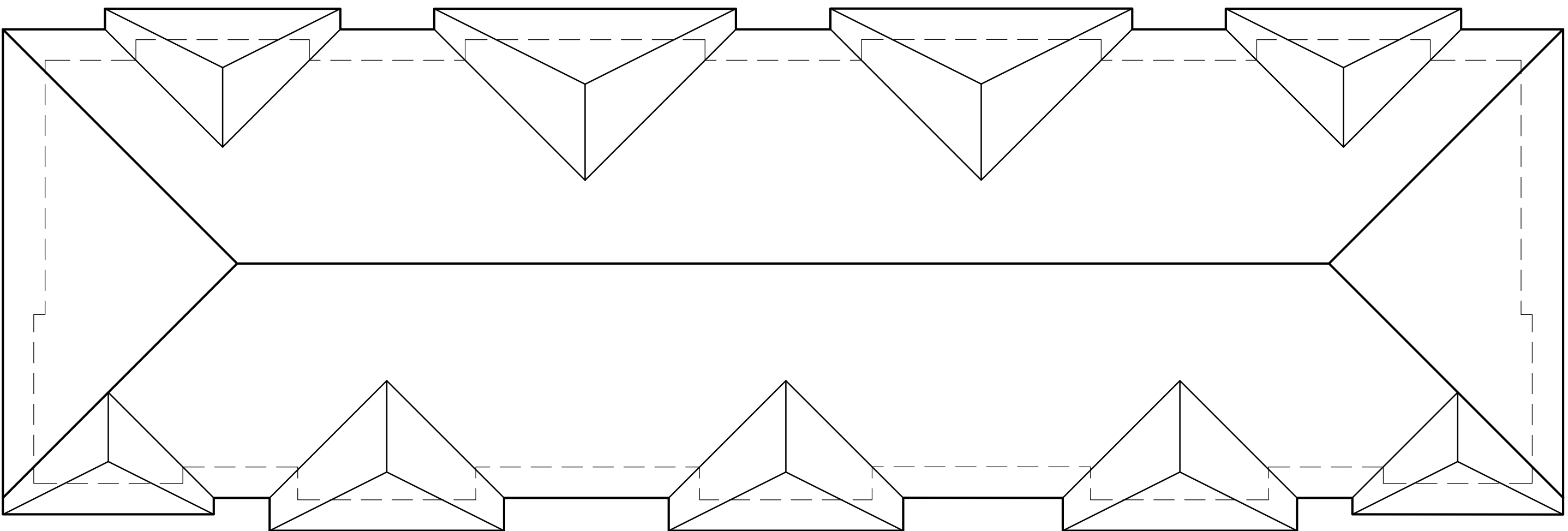
GROUND FLOOR PLAN



SECOND FLOOR PLAN



THIRD FLOOR PLAN



ROOF PLAN

BLOCKS 5 & 8

BLOCK 12 (SIMILAR)

APPROVED ☐ REFUSED ☐

THIS ____ DAY OF _____, 20__

DERRICK MOODIE

MANAGER, DEVELOPMENT REVIEW - WEST

PLANNING, INFRASTRUCTURE & ECONOMIC

DEVELOPMENT DEPARTMENT, CITY OF OTTAWA

IT IS THE RESPONSIBILITY OF THE APPROPRIATE CONTRACTOR TO CHECK AND VERIFY ALL DIMENSIONS ON SITE AND TO REPORT ALL ERRORS AND/OR OMISSIONS TO THE ARCHITECT.

ALL CONTRACTORS MUST COMPLY WITH ALL PERTINENT CODES AND BY-LAWS.

THIS DRAWING MAY NOT BE USED FOR CONSTRUCTION UNTIL SIGNED BY THE ARCHITECT.

DO NOT SCALE DRAWINGS.

NOTATION SYMBOLS:

- INDICATES DRAWING NOTES, LISTED ON EACH SHEET.
- INDICATES ASSEMBLY TYPE: REFER TO TYPICAL ASSEMBLIES SCHEDULE.
- INDICATES WINDOW TYPE: REFER TO WINDOW ELEVATIONS AND DETAILS ON A900 SERIES.
- INDICATES DOOR TYPE: REFER TO DOOR SCHEDULE AND DETAILS ON A900 SERIES.
- DETAIL NUMBER
- TITLE
- SCALE
- DETAIL REFERENCE PAGE
- DETAIL CROSS REFERENCE PAGE

GENERAL NOTES:

- REFER TO TYPICAL ASSEMBLIES SHEET FOR WALL, PARTITION, ROOF CEILING & FLOOR TYPES.
- FOR DOOR TYPES AND HARDWARE REQUIREMENTS REFER TO DOOR SCHEDULE ON A900 SERIES.
- ALL INTERIOR DIMENSIONS ARE TAKEN FROM THE FACE OF STUD.
- ALL EXTERIOR DIMENSIONS ARE TAKEN FROM THE FACE OF STUD.
- ALL EXTERIOR WALLS ARE TO BE TYPE "W1" UNLESS NOTED OTHER WISE.
- ALL INTERIOR PARTITIONS ARE TO BE TYPE "P1" UNLESS NOTED OTHER WISE.
- ALL REINFORCED CONCRETE SUSPENDED SLABS, COLUMNS & BEAMS HAVE A MIN. FRR OF 1.5 HRS (AS DETERMINED BY OBC SB-2) UNLESS OTHERWISE STATED.

2	ISSUED FOR SITE PLAN CONTROL REVISED CONCEPT	Nov 13, 17
1	ISSUED FOR SITE PLAN CONTROL	June 06, 17
No.	DESCRIPTION	DATE

REVISIONS:

ARCHITECT SEAL:
RODERICK LAHEY
LICENCE
4275
SEAL DATE: STAMP DATE

NORTH ARROW:

CLIENT:

ARCHITECT:

56 Beech Street, Ottawa, Ontario K1S 3J6
t.613.724.9932 f.613.724.1209 www.rodericklahey.ca

PROJECT TITLE:

2710 DRAPER AVENUE
OTTAWA ONTARIO

FLOOR PLANS

DRAWN:
RV

CHECKED:
LL

SCALE:
1 : 100

SHEET No.:

PROJECT No.:

1020

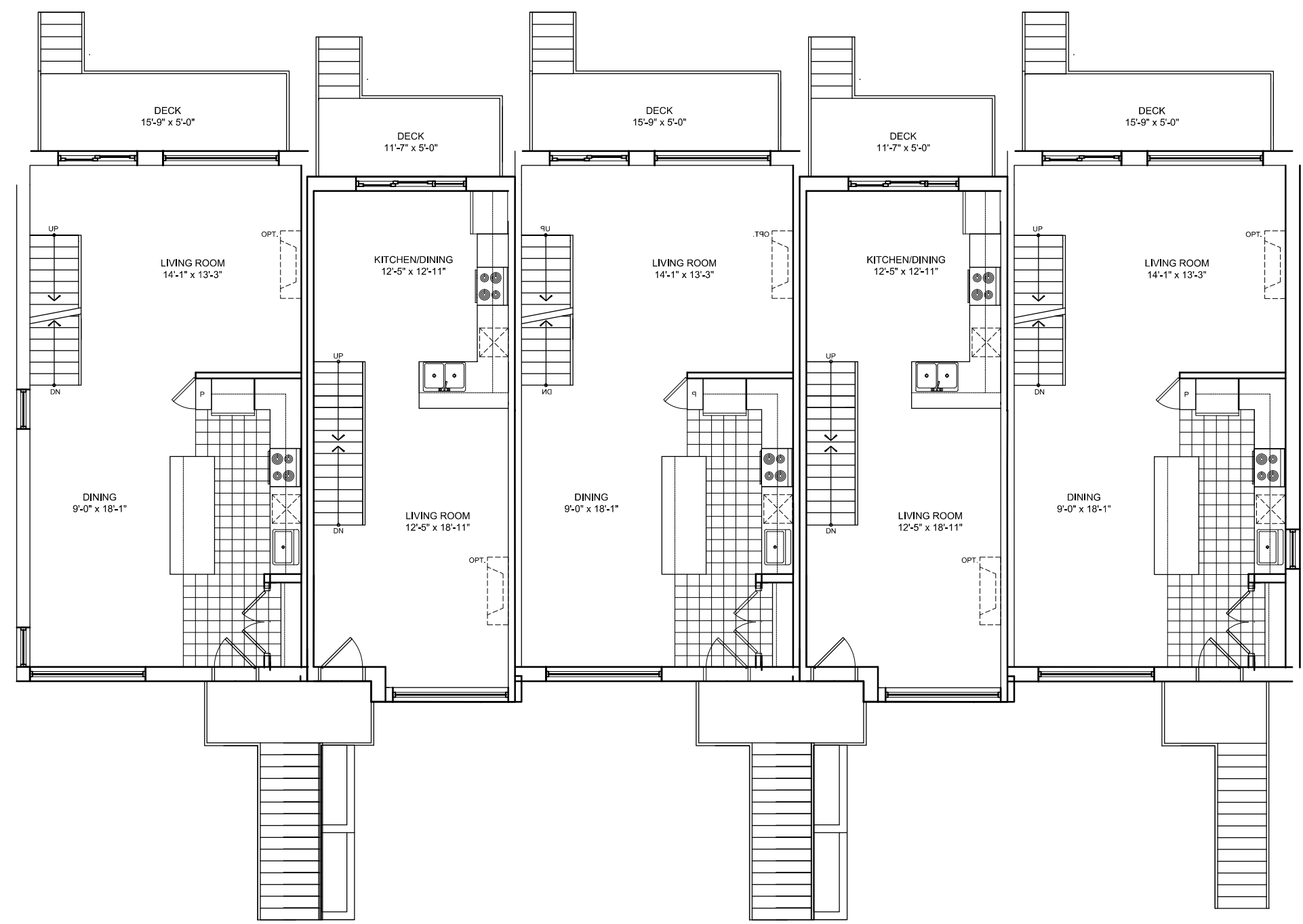
A-03



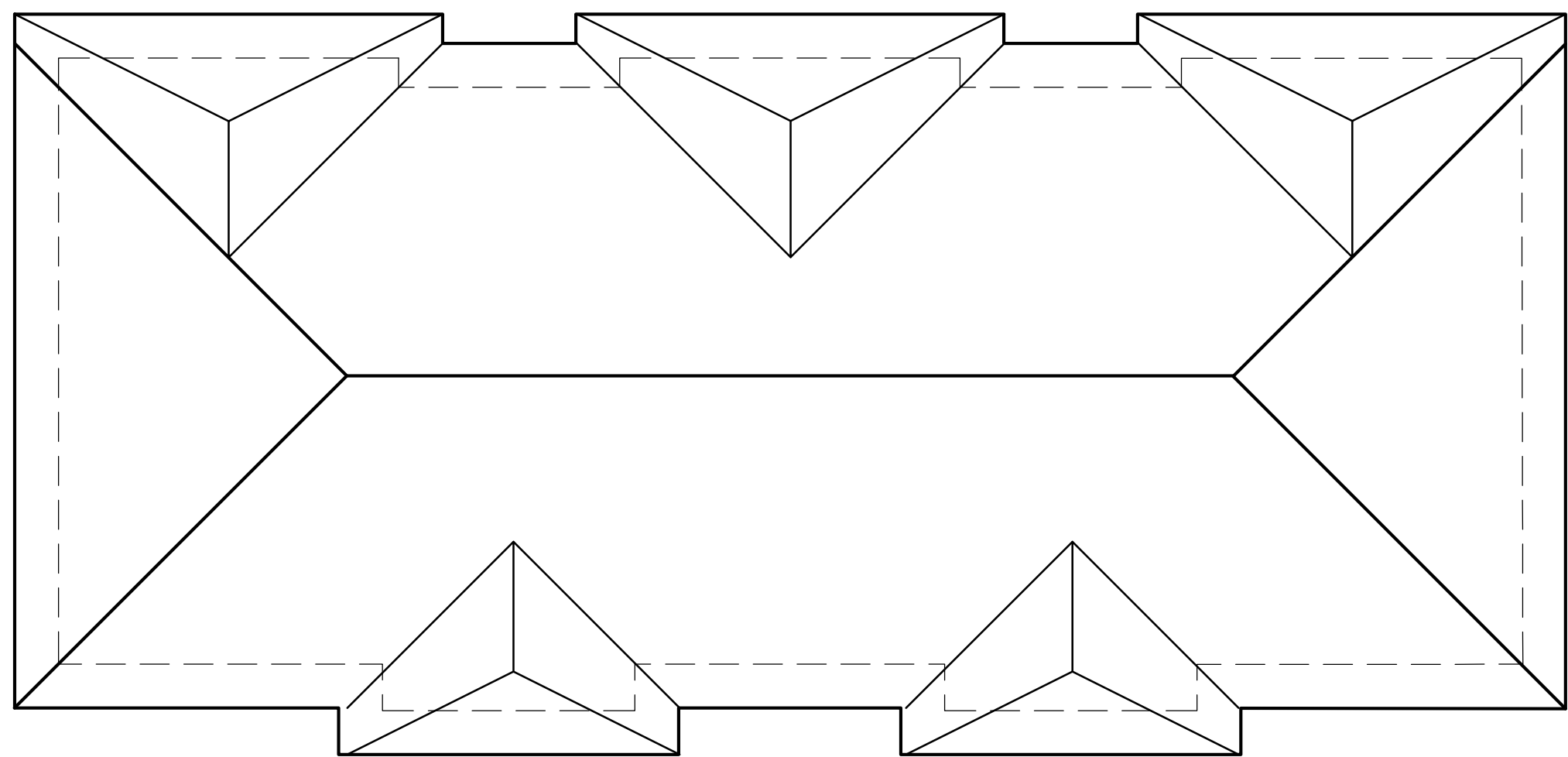
GROUND FLOOR PLAN



THIRD FLOOR PLAN



SECOND FLOOR PLAN



ROOF PLAN

BLOCKS 9, 10 & 11

IT IS THE RESPONSIBILITY OF THE APPROPRIATE CONTRACTOR TO CHECK AND VERIFY ALL DIMENSIONS ON SITE AND TO REPORT ALL ERRORS AND/OR OMISSIONS TO THE ARCHITECT.
ALL CONTRACTORS MUST COMPLY WITH ALL PERTINENT CODES AND BY-LAWS.
THIS DRAWING MAY NOT BE USED FOR CONSTRUCTION UNTIL SIGNED BY THE ARCHITECT.
DO NOT SCALE DRAWINGS.

NOTATION SYMBOLS:

- INDICATES DRAWING NOTES, LISTED ON EACH SHEET.
- INDICATES ASSEMBLY TYPE; REFER TO TYPICAL ASSEMBLIES SCHEDULE.
- INDICATES WINDOW TYPE; REFER TO WINDOW ELEVATIONS AND DETAILS ON A900 SERIES.
- INDICATES DOOR TYPE; REFER TO DOOR SCHEDULE AND DETAILS ON A900 SERIES.
- DETAIL NUMBER
- TITLE
- SCALE
- DETAIL REFERENCE PAGE
- DETAIL CROSS REFERENCE PAGE

GENERAL NOTES:

- REFER TO TYPICAL ASSEMBLIES SHEET FOR WALL, PARTITION, ROOF CEILING & FLOOR TYPES.
- FOR DOOR TYPES AND HARDWARE REQUIREMENTS REFER TO DOOR SCHEDULE ON A900 SERIES.
- ALL INTERIOR DIMENSIONS ARE TAKEN FROM THE FACE OF STUD.
- ALL EXTERIOR DIMENSIONS ARE TAKEN FROM THE FACE OF STUD.
- ALL EXTERIOR WALLS ARE TO BE TYPE "W1" UNLESS NOTED OTHER WISE.
- ALL INTERIOR PARTITIONS ARE TO BE TYPE "P1" UNLESS NOTED OTHER WISE.
- ALL REINFORCED CONCRETE SUSPENDED SLABS, COLUMNS & BEAMS HAVE A MIN. FRR OF 1.5 HRS (AS DETERMINED BY OBC SB-2) UNLESS OTHERWISE STATED.

2	ISSUED FOR SITE PLAN CONTROL REVISED CONCEPT	Nov 13, 17
1	ISSUED FOR SITE PLAN CONTROL	June 06, 17
No.	DESCRIPTION	DATE

REVISIONS:

ARCHITECT SEAL:

SEAL DATE: STAMP DATE

NORTH ARROW:

CLIENT:

ARCHITECT:

56 Beech Street, Ottawa, Ontario K1S 3J6
t.613.724.9932 f.613.724.1209 www.rodericklahey.ca

PROJECT TITLE:

2710 DRAPER AVENUE
OTTAWA ONTARIO

FLOOR PLANS

DRAWN: RV	CHECKED: LL
SCALE: 1 : 100	SHEET No. A-04
PROJECT No. 1020	

APPROVED ☐ REFUSED ☐

THIS ____ DAY OF _____, 20__

DERRICK MOODIE
MANAGER, DEVELOPMENT REVIEW - WEST
PLANNING, INFRASTRUCTURE & ECONOMIC
DEVELOPMENT DEPARTMENT, CITY OF OTTAWA

NOTATION SYMBOLS:

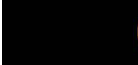
GENERAL NOTES:

2	ISSUED FOR SITE PLAN CONTROL REVISED CONCEPT	Nov 13, 17
1	ISSUED FOR SITE PLAN CONTROL	June 06, 17
No.	DESCRIPTION	DATE

CLIENT:

Greatwise
DEVELOPMENTS

PROJECT TITLE:



2710 DRAPER AVENUE

OTTAWA ONTARIO

SHEET TITLE:

BUILDING ELEVATIONS

PLOT DATE: Friday, November 24, 2011



BLOCK 1

BLOCK 2, 3, 4, 6 & 7 (SIMILAR)

COLOUR PALETTE #1

- 01 ASPHALT SHINGLES: IKO CAMBRIDGE, WEATHERED WOOD
- 02 PREFINISHED ALUMINUM FASCIA & FLASHINGS AND WINDOWS (CHESTNUT BROWN)
- 03 BEIGE BRICK: BRAMPTON, PREMIER SIZE, BEAUPORT
- 04 HARDIE BOARD ACCENT PANEL C/W ALUMINUM TRIM PIECES (AUTUMN TAN)
- 05 SAGIPER SAGIWALL SIDING (KNOTTY MAPLE REF#79)
- 06 ALUMINUM STAIRS AND GUARDS C/W GLASS INSERTS AND CONCRETE TREADS IN METAL PANS (CHESTNUT BROWN)

MATERIALS LEGEND

- | | |
|----|---|
| 07 | ALUMINUM BALCONY RAILING <i>c/w</i> PICKETS
@ 100mm o.c. MAX. (CHESTNUT BROWN)
AND OPEN RISER PT WOOD STEPS |
| 08 | ORNAMENTAL METAL RODS (STAINLESS STEEL) |
| 09 | PRE-FINISHED METAL PANELS BETWEEN WINDOWS
(CHESTNUT BROWN TO MATCH WINDOWS) |
| 10 | ENTRY DOORS & ACCENT PANELS
BENJAMIN MOORE (FIREBALL ORANGE) |
| 11 | GARAGE AND M&E DOORS BENJAMIN MOORE
(STARDUST). |

COLOUR PALETTE #2

- 01 ASPHALT SHINGLES: IKO CAMBRIDGE,CHARCOAL GREY
- 02 PREFINISHED ALUMINUM FASCIA & FLASHINGS AND WINDOWS (JELDWEN SABLE)
- 03 GRAY BRICK: BRAMPONT, PREMIER SIZE, GRAY VELOUR
- 04 HARDIE BOARD ACCENT PANEL C/W ALUMINUM TRIM PIECES (COBBLE STONE)
- 05 SAGIPER SAGIWALL SIDING (HAZEL OAK REF#6)
- 06 ALUMINUM STAIRS AND GUARDS C/W GLASS INSERTS AND CONCRETE TREADS IN METAL PANS (CHARCOAL)

MATERIALS LEGEND

- 07 ALUMINUM BALCONY RAILING c/w PICKETS
@ 100mm o.c. MAX (CHARCOAL)
AND OPEN RISER PT WOOD STEPS
- 08 ORNAMENTAL METAL RODS (STAINLESS STEEL)
- 09 PRE-FINISHED METAL PANELS BETWEEN WINDOWS
(SABLE TO MATCH WINDOWS)
- 10 ENTRY DOORS & ACCENT PANELS
BENJAMIN MOORE (SMOLDERING RED)
- 11 GARAGE AND M&E DOORS BENJAMIN MOORE
(TAOS TAUPE)

APPROVED ☐ REFUSED ☐

THIS ____ DAY OF _____, 20____

DERRICK MOODIE
MANAGER, DEVELOPMENT REVIEW - WEST
PLANNING, INFRASTRUCTURE & ECONOMIC
DEVELOPMENT DEPARTMENT, CITY OF OTTAWA

IT IS THE RESPONSIBILITY OF THE APPROPRIATE CONTRACTOR TO CHECK AND VERIFY ALL DIMENSIONS ON SITE AND TO REPORT ALL ERRORS AND/OR OMISSIONS TO THE ARCHITECT.
ALL CONTRACTORS MUST COMPLY WITH ALL PERTINENT CODES AND BY-LAWS.
THIS DRAWING MAY NOT BE USED FOR CONSTRUCTION UNTIL SIGNED BY THE ARCHITECT.
DO NOT SCALE DRAWINGS.

NOTATION SYMBOLS:


- INDICATES DRAWING NOTES, LISTED ON EACH SHEET.
- INDICATES ASSEMBLY TYPE; REFER TO TYPICAL ASSEMBLIES SCHEDULE.
- INDICATES WINDOW TYPE; REFER TO WINDOW ELEVATIONS AND DETAILS ON A900 SERIES.
- INDICATES DOOR TYPE; REFER TO DOOR SCHEDULE AND DETAILS ON A900 SERIES.
- DETAIL NUMBER
- TITLE
- SCALE
- DETAIL REFERENCE PAGE
- DETAIL CROSS REFERENCE PAGE

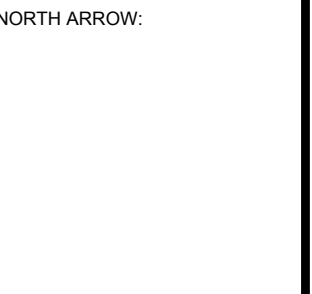
GENERAL NOTES:

- REFER TO TYPICAL ASSEMBLIES SHEET FOR WALL, PARTITION, ROOF CEILING & FLOOR TYPES.
- FOR DOOR TYPES AND HARDWARE REQUIREMENTS REFER TO DOOR SCHEDULE ON A900 SERIES.
- ALL INTERIOR DIMENSIONS ARE TAKEN FROM THE FACE OF STUD
- ALL EXTERIOR DIMENSIONS ARE TAKEN FROM THE FACE OF STUD
- ALL EXTERIOR WALLS ARE TO BE TYPE "W1" UNLESS NOTED OTHER WISE.
- ALL INTERIOR PARTITIONS ARE TO BE TYPE "P1" UNLESS NOTED OTHER WISE.
- ALL REINFORCED CONCRETE SUSPENDED SLABS, COLUMNS & BEAMS HAVE A MIN. FRR OF 1.5 HRS (AS DETERMINED BY OBC SB-2) UNLESS OTHERWISE STATED.

2	ISSUED FOR SITE PLAN CONTROL REVISED CONCEPT	Nov 13,17
1	ISSUED FOR SITE PLAN CONTROL	June 06,17
No.	DESCRIPTION	DATE

REVISIONS:

ARCHITECT SEAL:

SEAL DATE: STAMP DATE

NORTH ARROW:


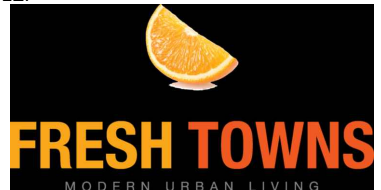
CLIENT:



ARCHITECT:


56 Beech Street, Ottawa, Ontario K1S 3J6
t.613.724.9932 f.613.724.1209 www.roderricklahey.ca

PROJECT TITLE:


2710 DRAPER AVENUE
OTTAWA ONTARIO

SHEET TITLE:

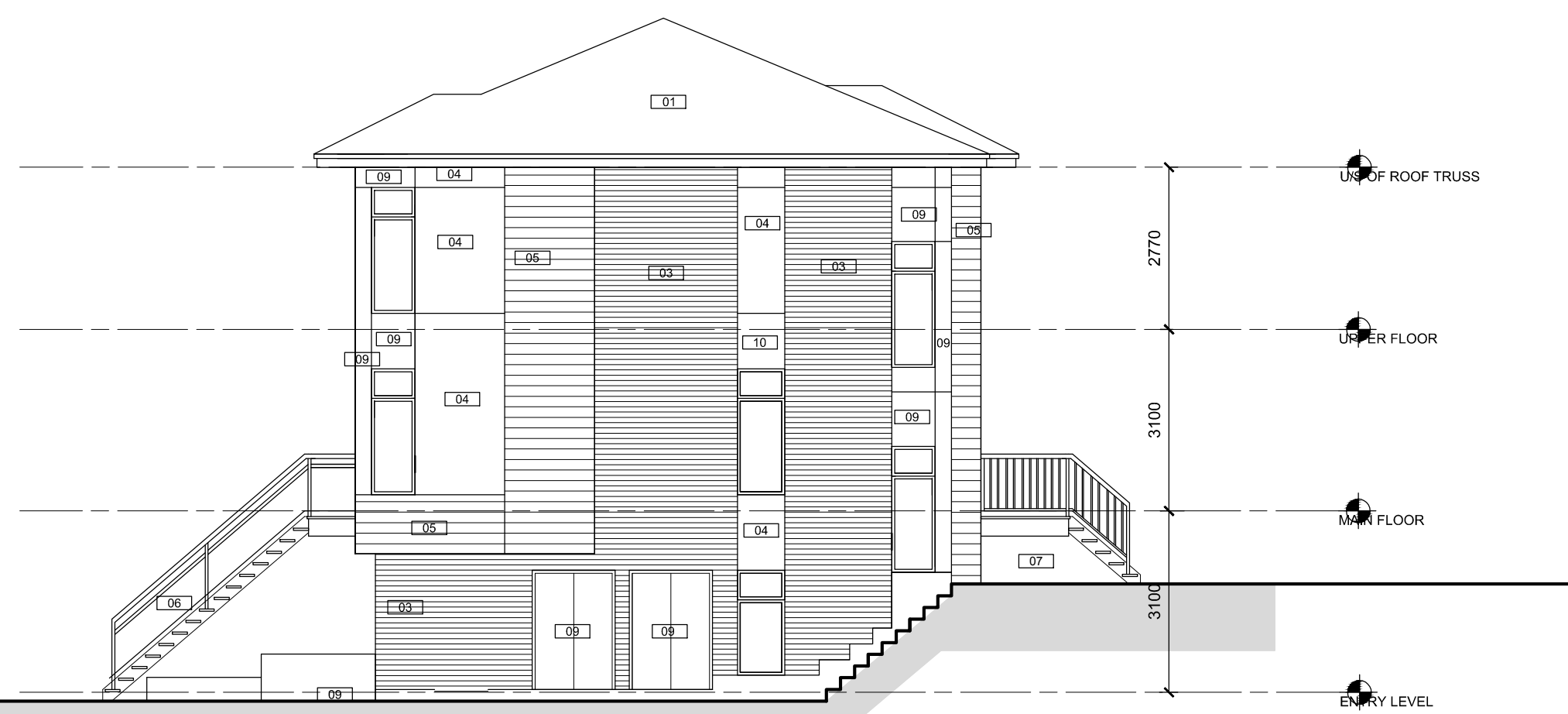
BUILDING ELEVATIONS

DRAWN: RV	CHECKED: LL
SCALE: 1 : 100	SHEET No. A-06
PROJECT No. 1020	

PLOT DATE: Friday, November 24, 2017



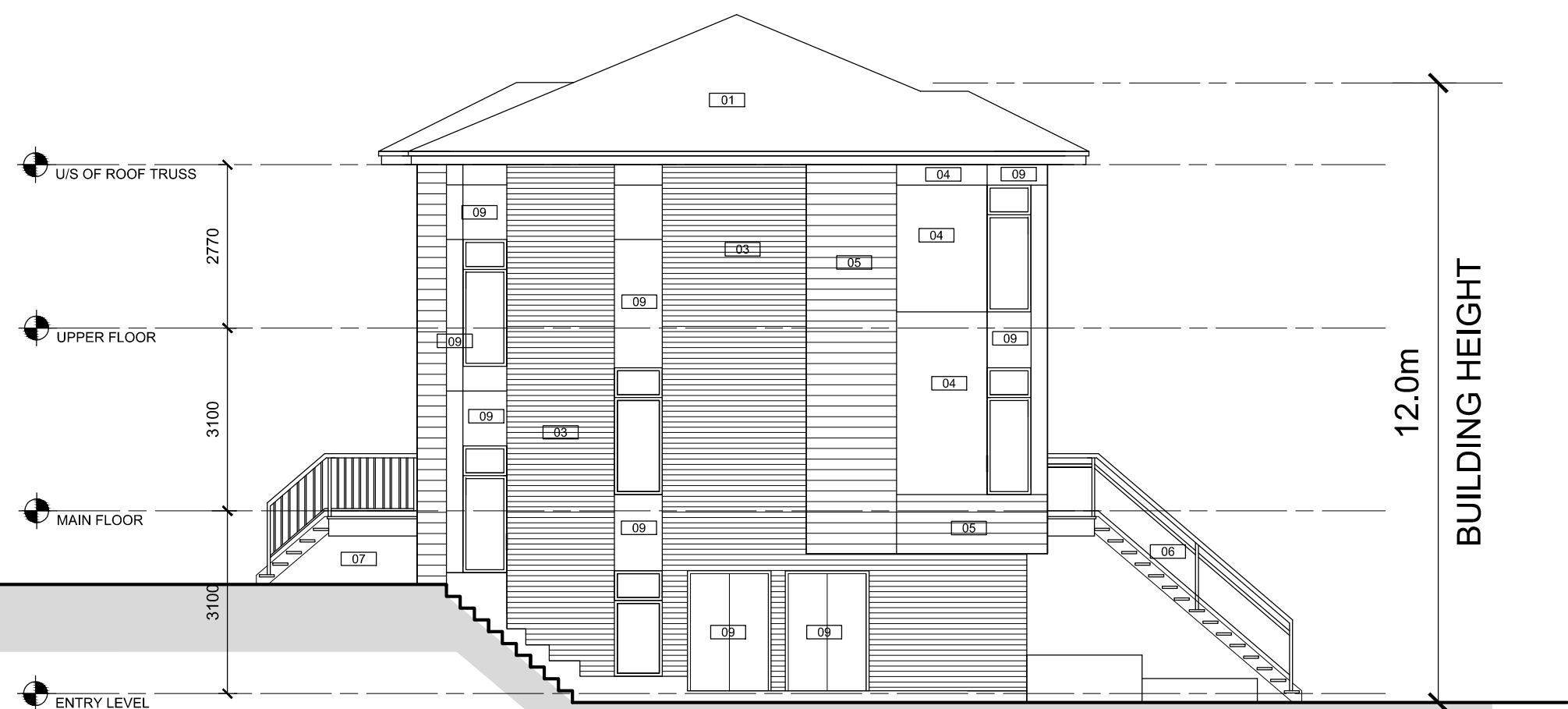
FRONT ELEVATION



SIDE ELEVATION



REAR ELEVATION



SIDE ELEVATION

BLOCKS 5 & 8

BLOCK 12 (SIMILAR)

COLOUR PALETTE #1

- 01 ASPHALT SHINGLES: IKO CAMBRIDGE,WEATHERED WOOD
- 02 PREFINISHED ALUMINUM FASCIA & FLASHINGS AND WINDOWS (CHESTNUT BROWN)
- 03 BEIGE BRICK: BRAMPTON, PREMIER SIZE, BEAUPORT
- 04 HARDIE BOARD ACCENT PANEL C/W ALUMINUM TRIM PIECES (AUTUMN TAN)
- 05 SAGIPER SAGIWALL SIDING (KNOTTY MAPLE REF#79)
- 06 ALUMINUM STAIRS AND GUARDS C/W GLASS INSERTS AND CONCRETE TREADS IN METAL PANS (CHESTNUT BROWN)

MATERIALS LEGEND

- 07 ALUMINUM BALCONY RAILING c/w PICKETS @ 100mm o.c. MAX (CHESTNUT BROWN) AND OPEN RISER PT WOOD STEPS
- 08 ORNAMENTAL METAL RODS (STAINLESS STEEL)
- 09 PRE-FINISHED METAL PANELS BETWEEN WINDOWS (CHESTNUT BEROWN TO MATCH WINDOWS)
- 10 ENTRY DOORS & ACCENT PANELS BENJAMIN MOORE (FIREBALL ORANGE)
- 11 GARAGE AND M&E DOORS BENJAMIN MOORE (STARDUST)

COLOUR PALETTE #2

- 01 ASPHALT SHINGLES: IKO CAMBRIDGE,CHARCOAL GREY
- 02 PREFINISHED ALUMINUM FASCIA & FLASHINGS AND WINDOWS (JELDWN SABLE)
- 03 GRAY BRICK: BRAMPTON, PREMIER SIZE, GRAY VELOUR
- 04 HARDIE BOARD ACCENT PANEL C/W ALUMINUM TRIM PIECES (COBBLE STONE)
- 05 SAGIPER SAGIWALL SIDING (HAZEL OAK REF#6)
- 06 ALUMINUM STAIRS AND GUARDS C/W GLASS INSERTS AND CONCRETE TREADS IN METAL PANS (CHARCOAL)

MATERIALS LEGEND

- 07 ALUMINUM BALCONY RAILING c/w PICKETS @ 100mm o.c. MAX (CHARCOAL) AND OPEN RISER PT WOOD STEPS
- 08 ORNAMENTAL METAL RODS (STAINLESS STEEL)
- 09 PRE-FINISHED METAL PANELS BETWEEN WINDOWS (SABLE TO MATCH WINDOWS)
- 10 ENTRY DOORS & ACCENT PANELS BENJAMIN MOORE (SMOLDERING RED)
- 11 GARAGE AND M&E DOORS BENJAMIN MOORE (TAOS TAUPE)

APPROVED ☐ REFUSED ☐

THIS ____ DAY OF _____, 20__

DERRICK MOODIE
MANAGER, DEVELOPMENT REVIEW - WEST
PLANNING, INFRASTRUCTURE & ECONOMIC
DEVELOPMENT DEPARTMENT, CITY OF OTTAWA

D07-12-14-0076






IT IS THE RESPONSIBILITY OF THE APPROPRIATE CONTRACTOR TO CHECK AND VERIFY ALL DIMENSIONS ON SITE AND TO REPORT ALL ERRORS AND/OR OMISSIONS TO THE ARCHITECT.

ALL CONTRACTORS MUST COMPLY WITH ALL PERTINENT CODES AND BY-LAWS.

THIS DRAWING MAY NOT BE USED FOR CONSTRUCTION UNTIL SIGNED BY THE ARCHITECT.

DO NOT SCALE DRAWINGS.

NOTATION SYMBOLS:

-  INDICATES DRAWING NOTES, LISTED ON EACH SHEET.
 INDICATES ASSEMBLY TYPE; REFER TO TYPICAL ASSEMBLIES SCHEDULE.
 INDICATES WINDOW TYPE; REFER TO WINDOW ELEVATIONS AND DETAILS ON A900 SERIES.
 INDICATES DOOR TYPE; REFER TO DOOR SCHEDULE AND DETAILS ON A900 SERIES.

 - 000000 — DETAIL NUMBER
 - 00 — TITLE
 - 000000 — SCALE
- DETAIL REFERENCE PAGE
 — DETAIL CROSS REFERENCE PAGE

GENERAL NOTES:

- (A) REFER TO TYPICAL ASSEMBLIES SHEET FOR WALL, PARTITION, ROOF CEILING & FLOOR TYPES.
- (B) REFER TO DOOR TYPES AND HARDWARE REQUIREMENTS: REFER TO DOOR SCHEDULE ON A500 SERIES.
- (C) ALL INTERIOR DIMENSIONS ARE TAKEN FROM THE FACE OF STUD.
- (D) ALL EXTERIOR DIMENSIONS ARE TAKEN FROM THE FACE OF STUD.
- (E) ALL EXTERIOR WALLS ARE TO BE TYPE "W1" UNLESS NOTED OTHER WISE.
- (F) ALL INTERIOR PARTITIONS ARE TO BE TYPE "P1" UNLESS NOTED OTHER WISE.
- (G) ALL REINFORCED CONCRETE SUSPENDED SLABS, BEAMS & BEAMS HAVE A MIN. FRR OF 1.5 HRS (AS DETERMINED BY CBC S2-2) UNLESS OTHERWISE STATED.



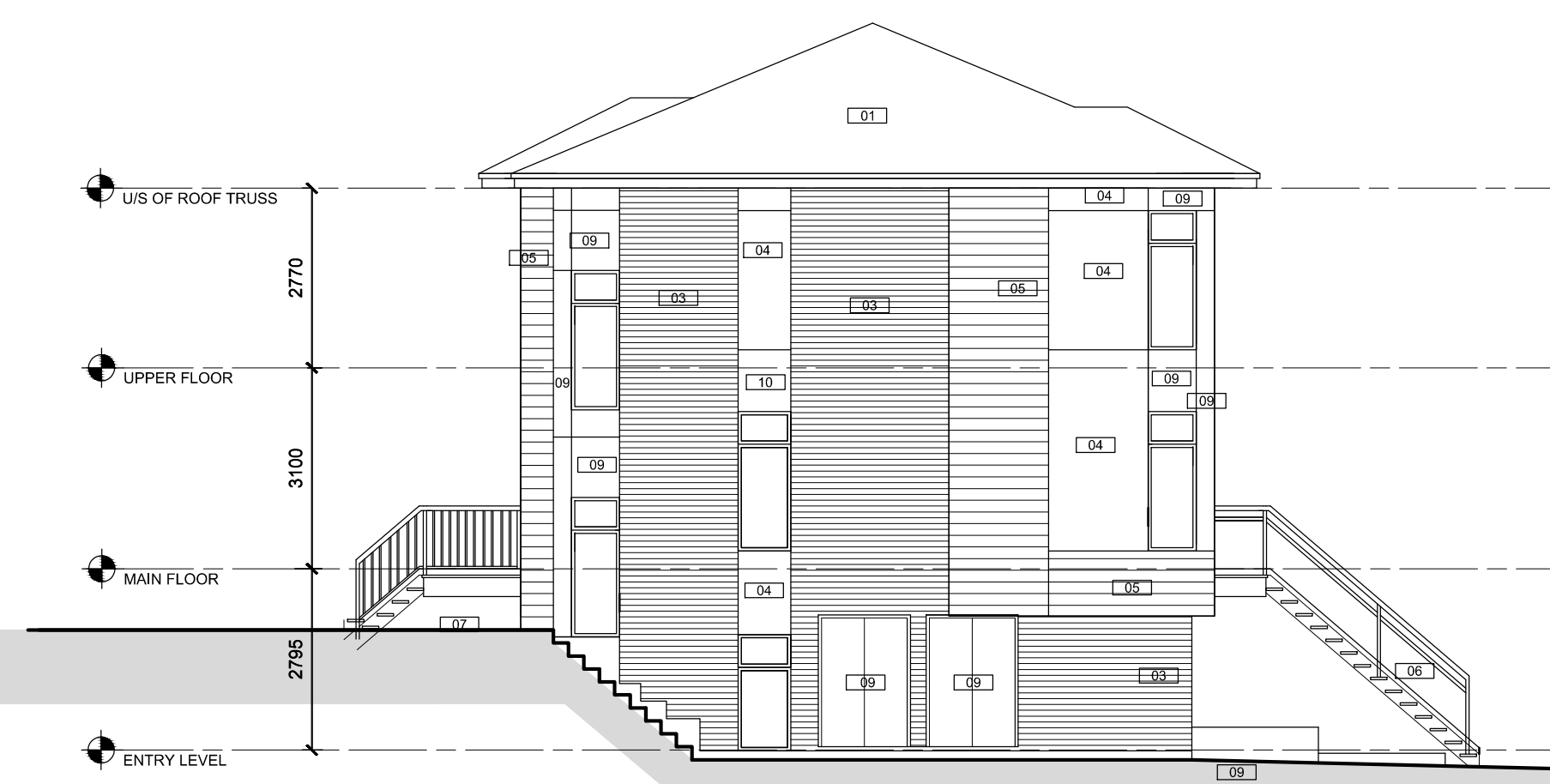
FRONT ELEVATION



SIDE ELEVATION



REAR ELEVATION



SIDE ELEVATION

BLOCKS 9, 10 & 11

COLOUR PALETTE #1

- | | |
|----|---|
| 01 | ASPHALT SHINGLES: IKO CAMBRIDGE,WEATHERED WOOD |
| 02 | PREFINISHED ALUMINUM FASCIA & FLASHINGS AND WINDOWS (CHESTNUT BROWN) |
| 03 | BEIGE BRICK: BRAMPTON, PREMIER SIZE, BEAUPORT |
| 04 | HARDIE BOARD ACCENT PANEL C/W ALUMINUM TRIM PIECES (AUTUMN TAN) |
| 05 | SAGIPER SAGIWALL SIDING (KNOTTY MAPLE REF#79) |
| 06 | ALUMINUM STAIRS AND GUARDS C/W GLASS INSERTS AND CONCRETE TREADS IN METAL PANS (CHESTNUT BROWN) |

MATERIALS LEGEND

- | | |
|----|--|
| 07 | ALUMINUM BALCONY RAILING c/w PICKETS
@ 100mm c.c. (CHESNUT BROWN)
AND OPEN RISER PT WOOD STEPS |
| 08 | ORNAMENTAL METAL RODS (STAINLESS STEEL) |
| 09 | PRE-FINISHED METAL PANELS BETWEEN WINDOWS
(CHESNUT BROWN TO MATCH WINDOWS) |
| 10 | ENTRY DOORS & ACCENT PANELS
BENJAMIN MOORE (FIREBALL ORANGE) |
| 11 | GARAGE AND M&E DOORS BENJAMIN MOORE
(STARDUST). |

COLOUR PALETTE #2

- | | |
|----|---|
| 01 | ASPHALT SHINGLES: IKO CAMBRIDGE,CHARCOAL GREY |
| 02 | PREFINISHED ALUMINUM FASCIA & FLASHINGS AND WINDOWS (JELDWEN SABLE) |
| 03 | GRAY BRICK: BRAMPONT, PREMIER SIZE, GRAY VELOUR |
| 04 | HARDIE BOARD ACCENT PANEL C/W ALUMINUM TRIM PIECES (COBBLE STONE) |
| 05 | SAGIPER SAGIWALL SIDING (HAZEL OAK REF#6) |
| 06 | ALUMINUM STAIRS AND GUARDS C/W GLASS INSERTS AND CONCRETE TREADS IN METAL PANS (CHARCOAL) |

MATERIALS LEGEND


- 07 ALUMINUM BALCONY RAILING c/w PICKETS
@ 100mm o.c. MAX (CHARCOAL)
AND OPEN RISER PT WOOD STEPS
- 08 ORNAMENTAL METAL RODS (STAINLESS STEEL)
- 09 PRE-FINISHED METAL PANELS BETWEEN WINDOWS
(SABLE TO MATCH WINDOWS)
- 10 ENTRY DOORS & ACCENT PANELS
BENJAMIN MOORE (SMOLDERING RED)
- 11 GARAGE AND M&E DOORS BENJAMIN MOORE
(TASO TAUPE).

APPROVED ☐ REFUSED ☐

THIS ____ DAY OF _____, 20____

DERRICK MOODIE
MANAGER, DEVELOPMENT REVIEW - WEST
PLANNING, INFRASTRUCTURE & ECONOMIC
DEVELOPMENT DEPARTMENT, CITY OF OTTAWA

2	ISSUED FOR SITE PLAN CONTROL REVISED CONCEPT	Nov 13,
1	ISSUED FOR SITE PLAN CONTROL	June 06
No.	DESCRIPTION	DATE

<p>REVISIONS:</p> <p>ARCHITECT SEAL:</p>  <p>FREDERICK J. LAHEY LICENCE 4375</p> <p>SEAL DATE: STAMP DATE</p>	<p>NORTH ARROW:</p>
--	---------------------

CLIENT:


Greatwise
DEVELOPMENT

ARCHITECT:

rla / architecture

56 Beech Street, Ottawa, Ontario K1S 3J6
t.613.724.9932 f.613.724.1209 www.rodericklahey.ca

PROJECT TITLE:



FRESH TOWNS
MODERN URBAN LIVING

2710 DRAPER AVENUE

OTTAWA ONTARIO

SHEET TITLE:	
BUILDING ELEVATIONS	
DRAWN: RV	CHECKED: LL
SCALE: 1 : 100	SHEET No.
PROJECT No. 1020	A-07