

Copyright Reserved
The Contractor shall verify and be responsible for all dimensions. DO NOT scale the drawing - any errors or omissions shall be reported to Stantec without delay.
The Copyrights to all designs and drawings are the property of Stantec. Reproduction or use for any purpose other than that authorized by Stantec is forbidden.

Legend

- SANITARY DRAINAGE AREA ID#
- COMMERCIAL OR INSTITUTIONAL FLOW RATES USED
- SANITARY DRAINAGE AREA ha.
- SANITARY DRAINAGE AREA ID#
- INFILTRATION RATES
- SANITARY DRAINAGE AREA ha.
- SANITARY DRAINAGE AREA
- PROPOSED SANITARY SEWER

Notes

10	ISSUED FOR SPA	MJS	DT	17.10.20
9	ISSUED FOR ADDENDUM # 3	MJS	GR	17.05.04
8	ISSUED FOR ADDENDUM # 1	MJS	GR	17.04.28
7	ISSUED FOR TENDER	MJS	GR	17.04.12
6	ISSUED FOR TENDER	MJS	GR	17.03.29
5	REVISED AS PER CITY COMMENTS	MJS	DT	17.03.28
4	REVISED AS PER CITY COMMENTS	MJS	DT	17.01.03
3	REVISED SERVICING BLDG H3	MJS	DT	17.01.03
2	REVISED AS PER CITY COMMENTS	MJS	DT	16.12.07
1	ISSUED FOR SPA	MJS	DT	16.07.27

Revision	By	Appd.	YYMMDD
----------	----	-------	--------

File Name:	160401242.DB	MJS	DT	MJS	16.06.30
		Desn.	Chkd.	Desn.	YYMMDD

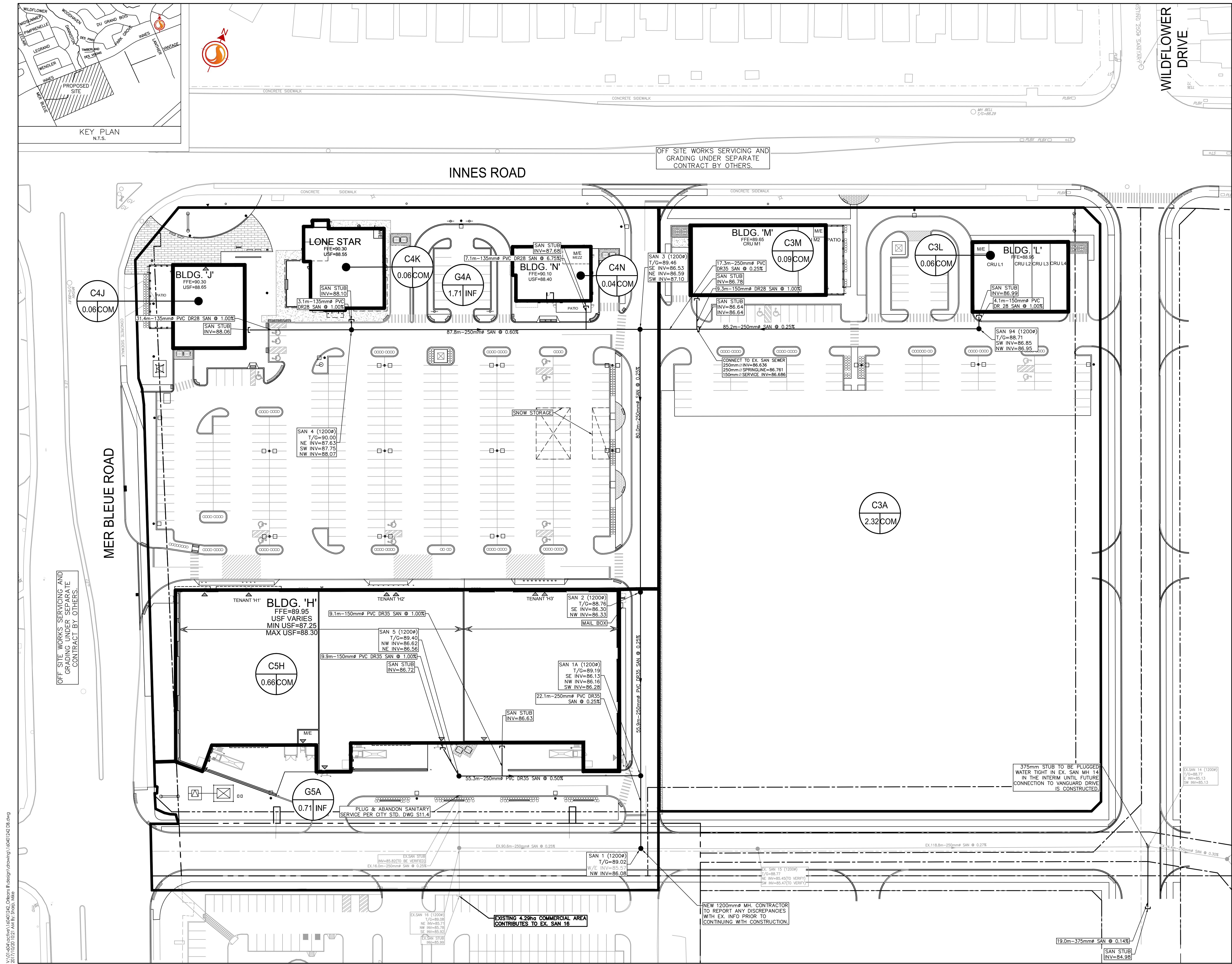
Permit-Seal

Client/Project
SMARTREIT

ORLEANS II DEVELOPMENT
2025 MER BLEUE ROAD
OTTAWA, ON, CANADA

Title
SANITARY DRAINAGE PLAN

Project No. 160401242
Scale 1:500
Drawing No. SA-1
Sheet 6 of 6
Revision 10



V:\01-604\active\160401242_Orleans II design\drawing\160401242_08.dwg
2017/10/20 10:21 AM By: Photo Mike