

APPROVED UNDER SECTION 51 OF THE PLANNING ACT BY THE CITY OF OTTAWA THIS 21 DAY OF April, 2016

MICHAEL MIZZI, MCIIP, RPP, ACTING GENERAL MANAGER
PLANNING AND GROWTH MANAGEMENT DEPARTMENT
PLANNING AND INFRASTRUCTURE PORTFOLIO
CITY OF OTTAWA

CERTIFICATE OF REGISTRATION
PLAN 4M-1563

I CERTIFY THAT THIS PLAN IS REGISTERED IN THE LAND REGISTRY OFFICE FOR THE LAND TITLES DIVISION OF OTTAWA-CARLETON NO.4 AT 3:30 O'CLOCK ON THE 26 DAY OF April, 2016 AND ENTERED IN THE PARCEL REGISTER FOR PROPERTY IDENTIFIER 0450-0604, AND THAT THE REQUIRED CONSENTS ARE REGISTERED AS PLAN DOCUMENT NUMBER 021781749.

F. Lamont
REPRESENTATIVE FOR THE LAND REGISTRAR

THIS PLAN COMPRISES PART OF THE LAND IDENTIFIED BY PIN 04510-0604.

PLAN OF SUBDIVISION of
PART OF LOT 3
CONCESSION 1
GEOGRAPHIC TOWNSHIP OF MARCH
CITY OF OTTAWA

Scale 1 : 750
0 2.5 5 7.5 10 15 30 Metres

METRIC CONVERSION

DISTANCES AND COORDINATES SHOWN ON THIS PLAN ARE IN METRES AND CAN BE CONVERTED TO FEET BY DIVIDING BY 0.3048

GRID SCALE CONVERSION

DISTANCES ARE GROUND AND CAN BE CONVERTED TO GRID BY MULTIPLYING BY THE COMBINED SCALE FACTOR OF 0.999914.

BEARING NOTE

BEARINGS HEREON ARE GRID BEARINGS DERIVED FROM THE CAN-NET VRS NETWORK MONUMENT - OTTAWA - (N 5036741.327, E 327757.614) AND FITZROY (N 5036741.327, E 327757.614) AND ARE REFERRED TO THE CENTRAL MERIDIAN 76° 30' WEST LONGITUDE OF THE 3° MTM ANTARCTIC COORDINATE SYSTEM, NAD83 (ORIGINAL) ZONE 9.

OBSERVED REFERENCE POINTS DERIVED FROM GPS OBSERVATIONS USING THE CAN-NET VIRTUAL REFERENCE STATION NETWORK: HTM ZONE 9, NAD83 (ORIGINAL) COORDINATES TO URBAN ACCURACY PER SEC 14(2) OF O.REG. 216/10		
POINT ID	NORTHING	EASTING
(A)	5018037.34	349095.66
(B)	5018201.04	349332.80

COORDINATES CANNOT, IN THEMSELVES, BE USED TO RE-ESTABLISH CORNERS OR BOUNDARIES SHOWN ON THIS PLAN.

SURVEYOR'S CERTIFICATE

I CERTIFY THAT:
1. THIS SURVEY AND PLAN ARE CORRECT AND IN ACCORDANCE WITH THE SURVEYS ACT, THE SURVEYORS ACT AND THE LAND TITLES ACT AND THE REGULATIONS MADE UNDER THEM.
2. THE SURVEY WAS COMPLETED ON THE 24th DAY OF FEBRUARY, 2015.

April 9/15
DATE

Brian J. Webster
ONTARIO LAND SURVEYOR

OWNER'S CERTIFICATE

THIS IS TO CERTIFY THAT:
1. BLOCKS 1 AND 2 INCLUSIVE, THE STREET, NAMELY voie Country Glen Way HAVE BEEN LAID OUT IN ACCORDANCE WITH OUR INSTRUCTIONS.
2. THE STREET IS DEDICATED AS PUBLIC HIGHWAY.

MINTO COMMUNITIES INC.

DATED: 04/16/16

Susan Murphy
VICE PRESIDENT,
DEVELOPMENT
I HAVE THE AUTHORITY
TO BIND THE CORPORATION

DATED: 04/16/16

Brent Strachan
SENIOR VICE PRESIDENT,
MINTO COMMUNITIES ONTARIO
I HAVE THE AUTHORITY
TO BIND THE CORPORATION

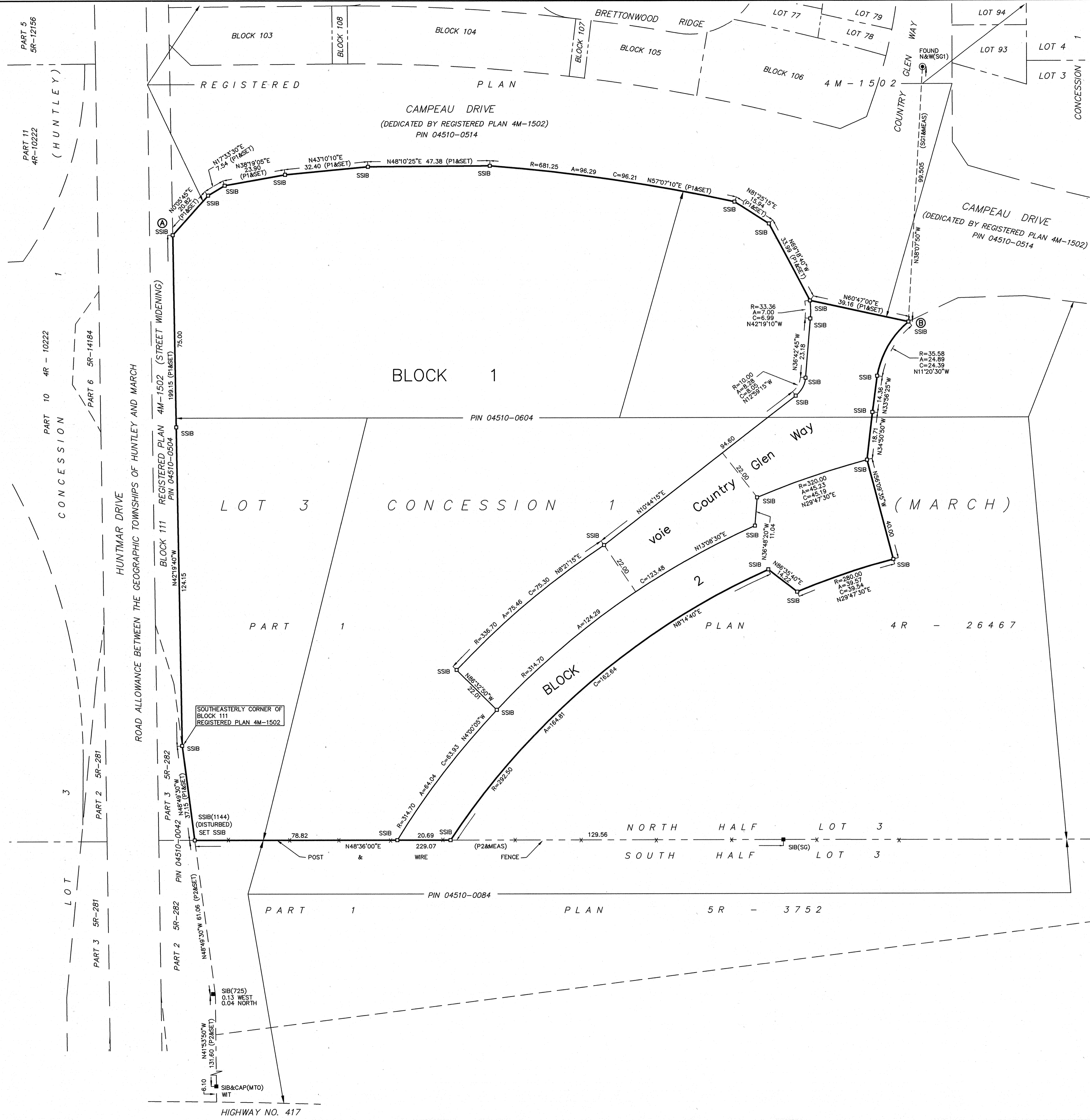
LEGEND

DENOTES	FOUND MONUMENTS
■	IRON BAR
□	ROUND IRON BAR
IB	STANDARD IRON BAR
IBB	SHORT STANDARD IRON BAR
SIB	CUT CROSS
SSIB	CONCRETE PIN
CC	NAIL & WASHER
CP	WITNESS
N&W	PROPERTY IDENTIFICATION NUMBER
WIT	MEASURED
PIN	PROPORTIONED
MEAS	ORIGIN UNKNOWN
PROP	STATEC GEOMATICS LTD.
OU	REGISTERED PLAN 4M-1502
SG	PLAN 4R-26467
P1	SG COORDINATE FILE PER 4M-1502
P2	
P3	
SG1	

ALL SET MONUMENTS SHOWN HEREON ARE IRON BARS (IB) UNLESS OTHERWISE NOTED.

Stantec Geomatics Ltd.
Ontario Land Surveyors
Canada Lands Surveyors
1331 CLYDE AVENUE, SUITE 400, OTTAWA, ON. K2C 3G4
PHONE (613)722-4420 FAX (613)722-2799
brian.webster@stantec.com
stantec.com

DRAWN BY: CEC/ME | CHECKED BY: BL/PM/BW | FIELD: AL | PROJECT No.: 161613058-132



W:\vctive\161613058_111Minto_HuntmarCommercial\subdivision_final_plan\ddp\dwg\161613058-132-MintoRetailPh_L1new.dwg 4/9/2015 6:48 AM