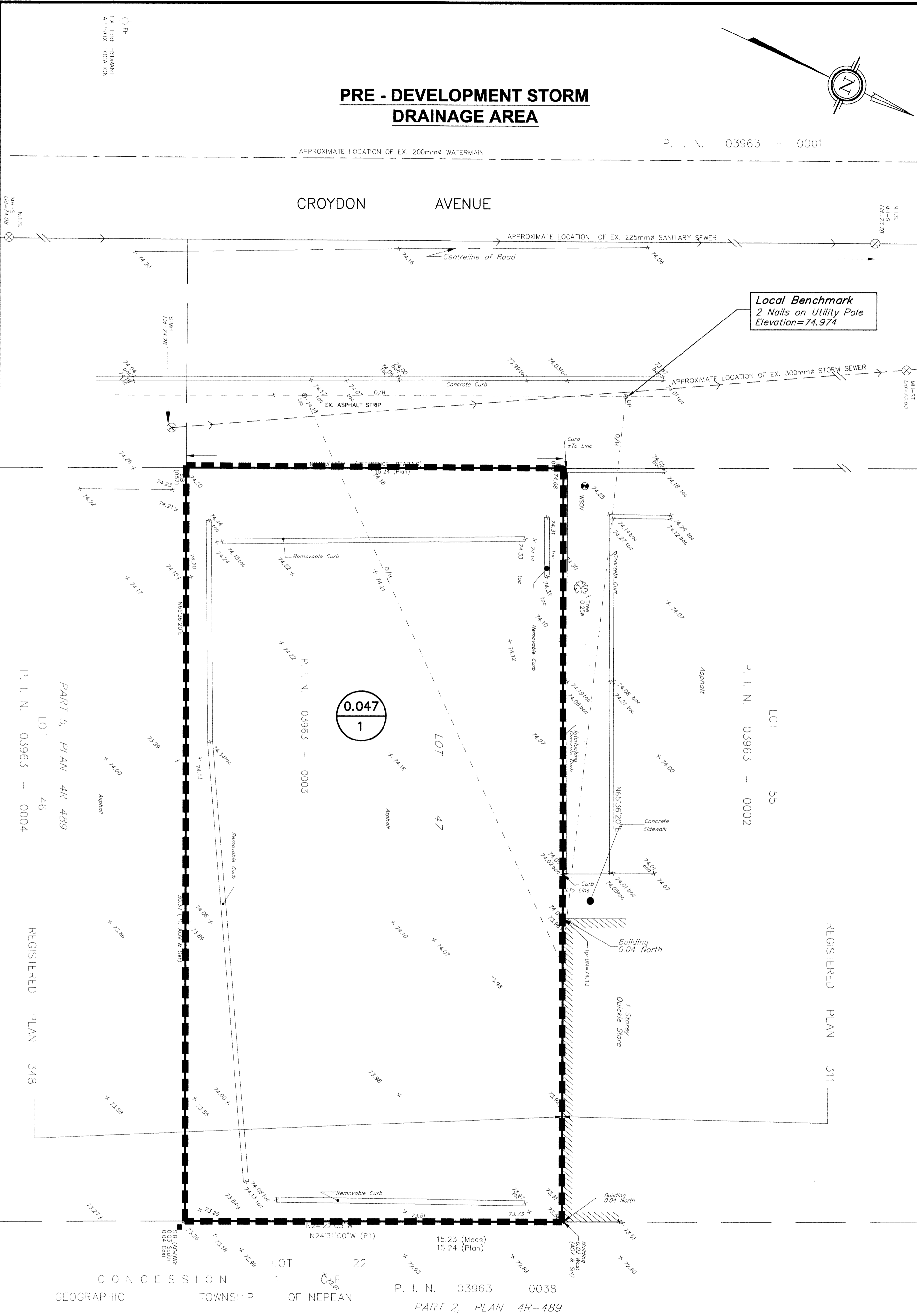


**PRE - DEVELOPMENT STORM DRAINAGE AREA**

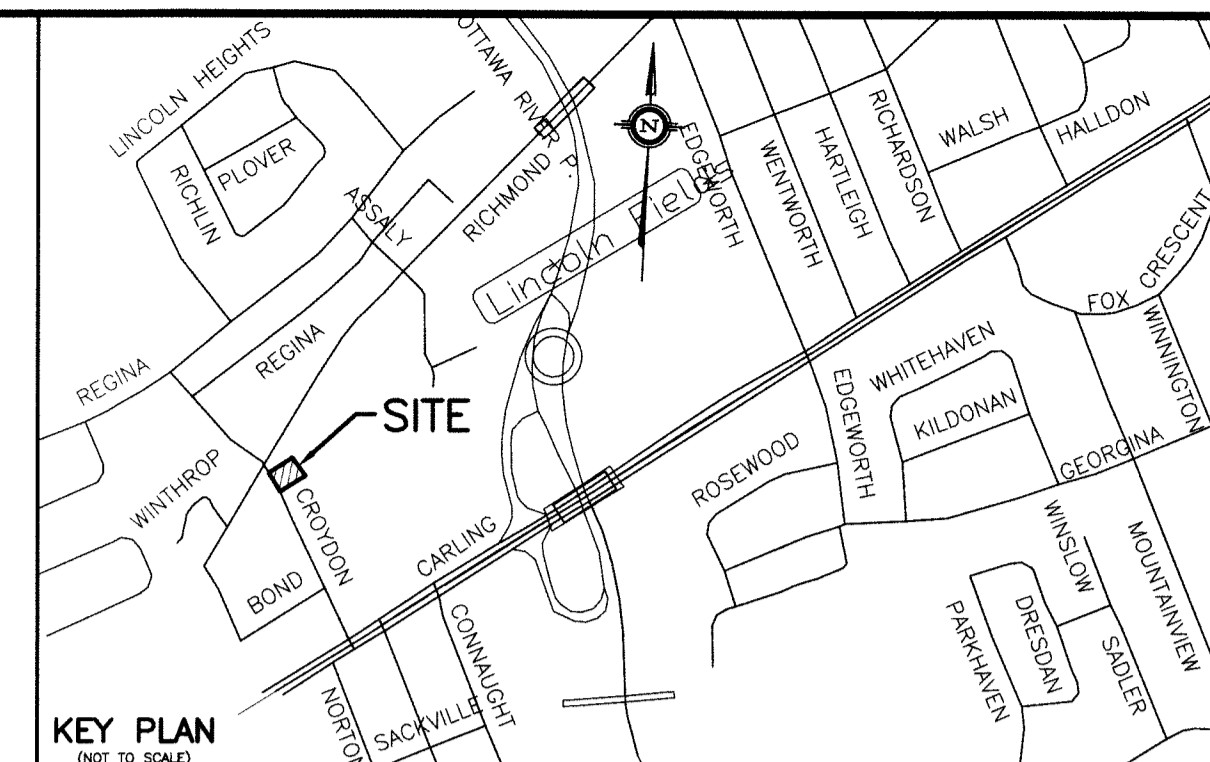
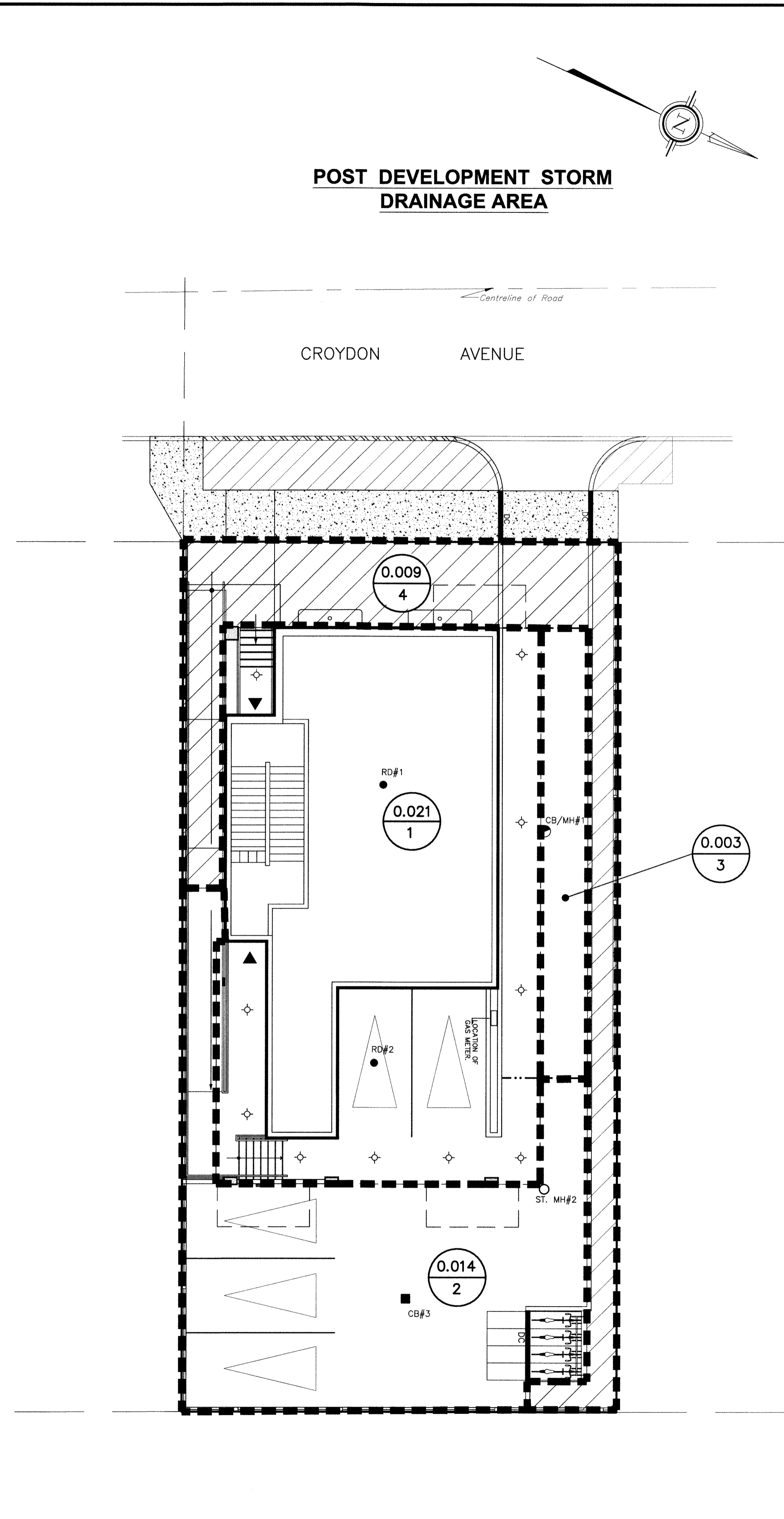
P. I. N. 03963 - 0001

CROYDON AVENUE



**POST DEVELOPMENT STORM DRAINAGE AREA**

CROYDON AVENUE



- LEGEND**
- RD#1
  - PROPOSED ROOF DOWNSPOUT LOCATION
  - PROPOSED CB/MH (CATCH BASIN/MANHOLE)
  - PROPOSED STORM MANHOLE
  - PROPOSED CATCH BASIN (600mmX600mm)
  - ▬ LIMIT OF STORM DRAINAGE AREA
  - 0.21 DRAINAGE AREA IN HECTARES
  - 2 DRAINAGE AREA NUMBER
  - ▨ UN-CONTROLLED DRAINAGE AREA

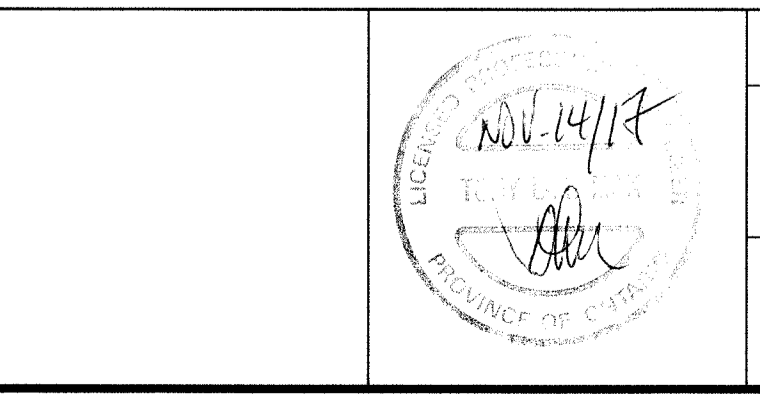
**NOTE:**  
DRAINAGE AREA NO.#1 IS CONTROLLED ROOF AREA.

APPROVED  REFUSED

THIS \_\_\_\_\_ DAY OF \_\_\_\_\_, 20\_\_\_\_

DERRICK MOODIE  
MANAGER, DEVELOPMENT REVIEW - WEST  
PLANNING, INFRASTRUCTURE & ECONOMIC  
DEVELOPMENT DEPARTMENT, CITY OF OTTAWA

NO.	REVISION	DATE	BY
1	AS PER CITY'S REVIEW COMMENTS OF SEPTEMBER 15, 2017	11/09/17	TLM



SCALE

0 1 2 3 5m

1:100 HORIZONTAL

VERTICAL

DESIGN	T.L.M.
CHECKED	T.L.M.
DRAWN BY	G.U.
CHECKED	T.L.M.
APPROVED	T.L.M.

PROJECT

351 CROYDON AVE  
LOT 47  
REGISTERED PLAN 348  
CITY OF OTTAWA

DRAWING TITLE

STORM DRAINAGE AREA PLAN

<p>T.L. MAK ENGINEERING CONSULTANTS LTD. CONSULTING ENGINEERS</p>		
PROJECT No.	DATE	DRAWING No.
817-21	NOVEMBER 2017	D-1

D07-12-17-0102