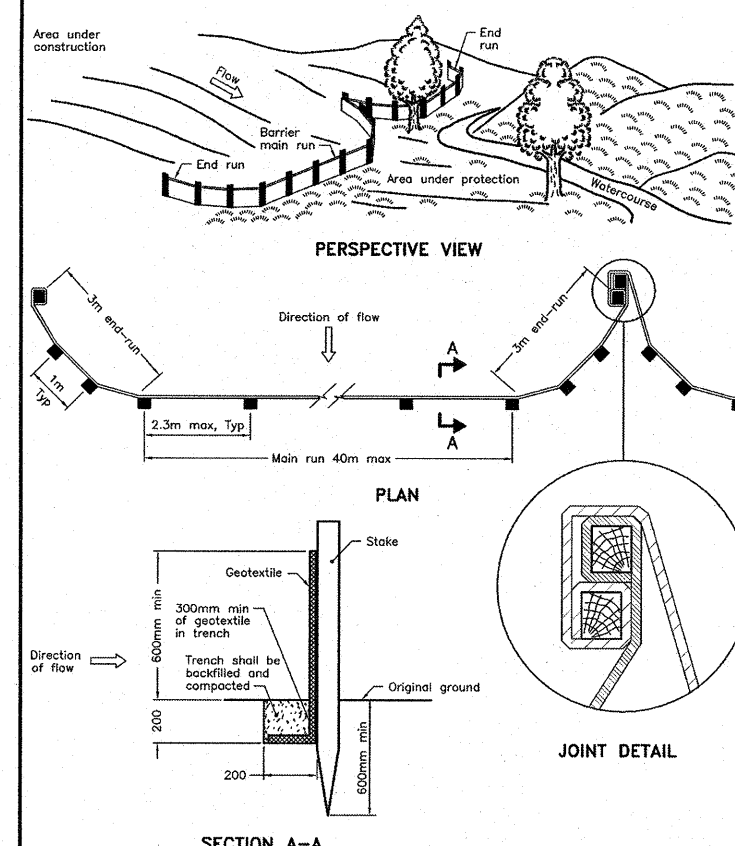


IN ACCORDANCE WITH BEST MANAGEMENT PRACTICES FOR EROSION AND SEDIMENT CONTROL, GEOTEXTILE MATERIAL IS TO BE PLACED UNDERNEATH ALL STORM CATCHBASIN AND CATCHBASIN MANHOLE LIDS UNTIL CONSTRUCTION IS COMPLETE. GEOTEXTILE FABRIC AND 50mm OF CLEAR STONE TO BE PLACED AROUND PERIMETER OF CATCHBASINS AND CATCHBASIN MANHOLES TO ACT AS TEMPORARY SEDIMENT TRAPS. GEOTEXTILE AND CLEAR STONE TO BE DISPOSED OF PRIOR TO PAVING.

### EROSION AND SEDIMENT CONTROLS DURING CONSTRUCTION.

DURING ALL CONSTRUCTION ACTIVITIES, EROSION AND SEDIMENTATION SHALL BE CONTROLLED BY THE FOLLOWING TECHNIQUES:

1. LIMITING THE EXTENT OF EXPOSED SOILS AT ANY GIVEN TIME.
2. RE-VEGETATION OF EXPOSED AREAS AS SOON AS POSSIBLE.
3. MINIMIZING THE AREA TO BE CLEARED AND DISRUPTION TO ADJACENT AREAS.
4. A SILT FENCE BARRIER (OPSS 219.110) TO BE INSTALLED AS SHOWN ON THIS DRAWING.
5. A VISUAL INSPECTION SHALL BE COMPLETED DAILY ON SEDIMENT CONTROL BARRIERS AND ANY DAMAGE REPAIRED IMMEDIATELY. CARE WILL BE TAKEN TO PREVENT DAMAGE DURING CONSTRUCTION OPERATIONS.
6. IN SOME CASES SOME BARRIERS MAY BE REMOVED TEMPORARILY TO ACCOMMODATE THE CONSTRUCTION OPERATIONS. THE AFFECTED BARRIERS WILL BE REINSTATED AT NIGHT WHEN CONSTRUCTION IS COMPLETED.
7. THE SEDIMENT CONTROL DEVICES WILL BE CLEANED OF ACCUMULATED SILT AS REQUIRED. THE DEPOSITS WILL BE DISPOSED OF AS PER THE REQUIREMENTS OF THE CONTRACT.
8. DURING THE COURSE OF CONSTRUCTION IF THE ENGINEER BELIEVES THAT ADDITIONAL PREVENTION METHODS ARE REQUIRED TO CONTROL EROSION AND SEDIMENTATION, THE CONTRACTOR WILL INSTALL ADDITIONAL SILT FENCES OR OTHER METHODS AS REQUIRED TO THE SATISFACTION OF THE ENGINEER.
9. CONSTRUCTION AND MAINTENANCE REQUIREMENTS FOR EROSION AND SEDIMENT CONTROLS TO COMPLY WITH ONTARIO PROVINCIAL STANDARD SPECIFICATION (OPSS) OPSS 805, AND CITY OF OTTAWA SPECIFICATIONS.



NOTE:  
A. All dimensions are in millimetres unless otherwise shown.

SECTION A-A

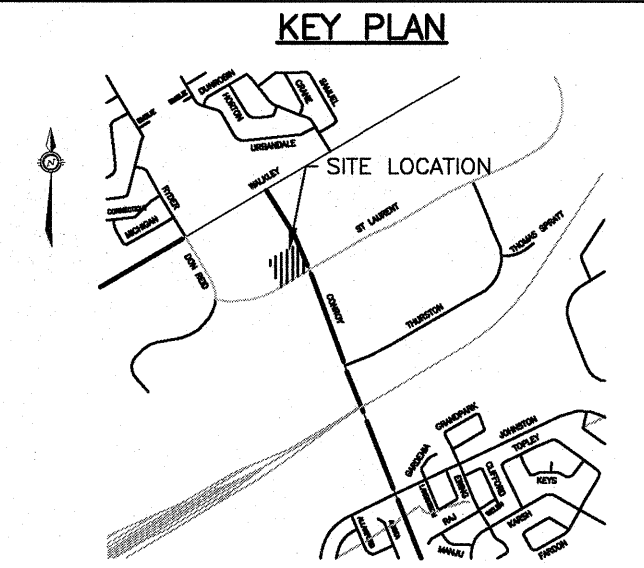
ONTARIO PROVINCIAL STANDARD DRAWING Nov 2010 Rev 2

LIGHT-DUTY SILT FENCE BARRIER

OPSS 219.110

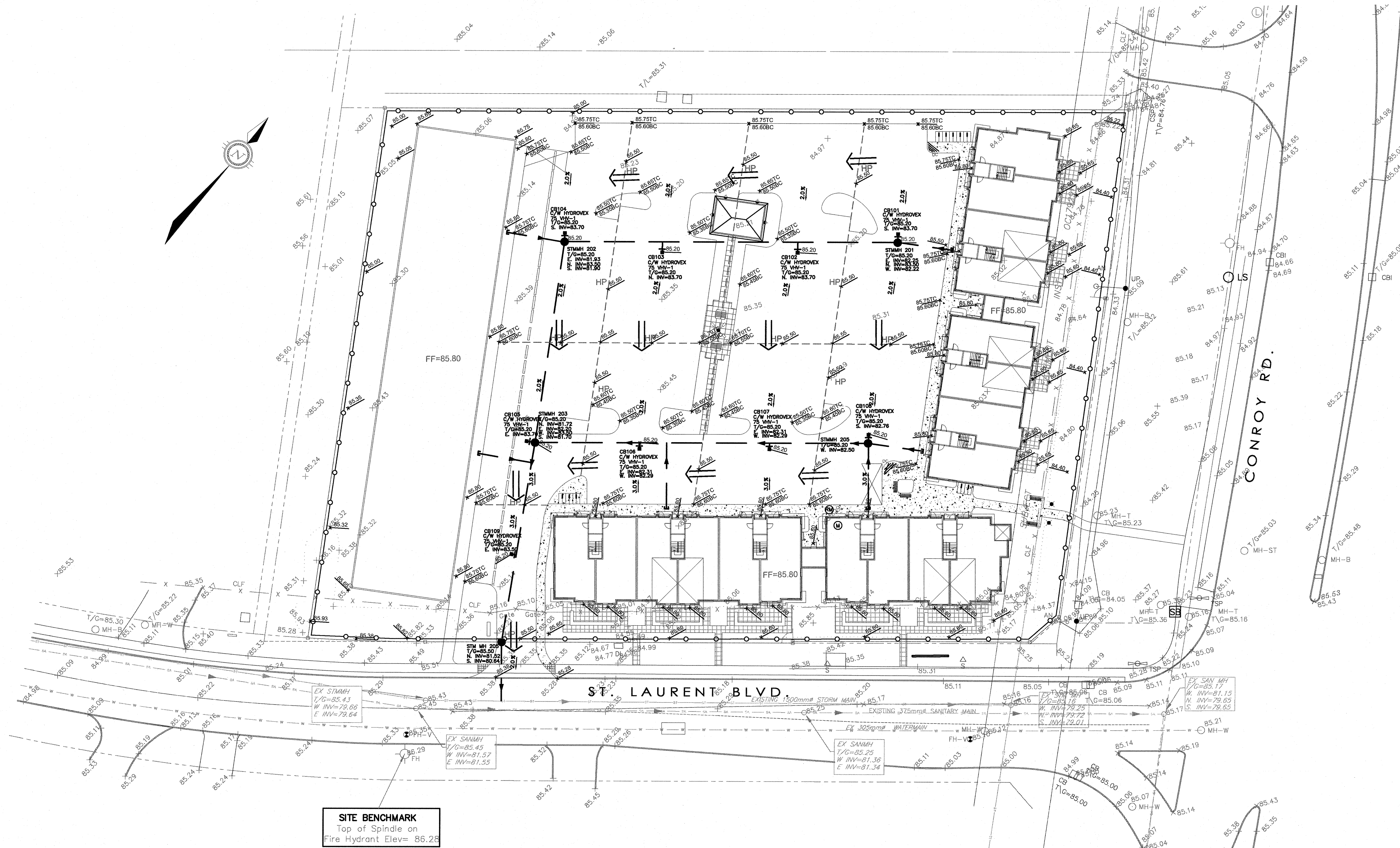
#### SILT FENCE NOTES:

1. POSTS TO BE SPACED AT 2.3 METRES CENTRE TO CENTRE.
2. WHEN TWO SECTIONS OF FILTER CLOTH ADJOIN EACH OTHER THEY SHALL BE OVERLAPPED BY A MINIMUM OF 500mm.
3. MAINTENANCE SHALL BE PERFORMED AS NEEDED AND MATERIAL REMOVED WHEN "BULGES" DEVELOP IN THE SILT FENCE.
4. WOOD POSTS TO BE HARDWOOD TYPE (50mm x 50mm).
5. GEOTEXTILE TO BE EMBEDDED 200 mm INTO GROUND.
6. GEOTEXTILE TO CONFORM TO OPSS 805 STANDARDS.
7. SILT FENCE MUST BE INSTALLED BEFORE COMMENCEMENT OF CONSTRUCTION AND IN ACCORDANCE WITH DETAIL. SILT FENCE CAN BE REMOVED AFTER LANDSCAPING IS COMPLETE.
8. SEDIMENTS MUST BE CLEARED AWAY WHEN THEY REACH HALF THE HEIGHT OF THE FENCE.



#### LEGEND

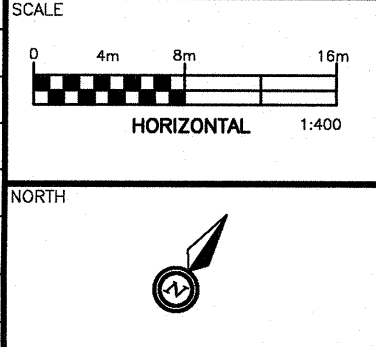
- SIB - STANDARD IRON BAR
- IB - IRON BAR
- CB - CATCH BASIN
- WMH - WATER MANHOLE
- LS - LAMP STANDARD
- UP - UTILITY POLE
- FW - FIRE HYDRANT
- WV - WATER VALVE
- W - GUY WIRE AND ANCHOR
- WM - WATERMAIN
- UB - OVERHEAD UTILITY WIRES
- UBH - UNDERGROUND HYDRO
- UBB - UNDERGROUND BELL
- GM - GAS MAIN
- CR - CABLE (ROGERS)
- SL - STREET LIGHT
- ST - STORM SEWER
- SS - SANITARY SEWER
- CRB - CURB
- PROPOSED SILT FENCE
- OVERLAND FLOW DIRECTION



**CAUTION**  
THE POSITION OF ALL POLE LINES, CONDUITS, WATERMANS, SEWERS AND OTHER UNDERGROUND AND OVERGROUND UTILITIES AND STRUCTURES IS NOT NECESSARILY SHOWN ON THE CONTRACT DRAWINGS, AND WHERE SHOWN, THE ACCURACY OF THE POSITION OF SUCH UTILITIES AND STRUCTURES IS NOT GUARANTEED. BEFORE STARTING WORK, DETERMINE THE EXACT LOCATION OF ALL SUCH UTILITIES AND STRUCTURES AND ASSUME ALL LIABILITY FOR DAMAGE TO THEM.

**PRELIMINARY**  
NOT FOR CONSTRUCTION

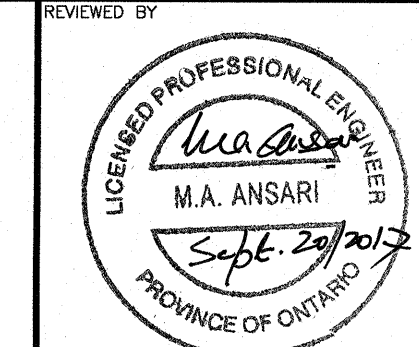
NO.	REVISION DESCRIPTION	DATE	BY	APPD
1	ISSUED FOR SITE PLAN APPROVAL	19/09/17	ML	AA



DESIGNED BY

REVIEWED BY

CLIENT



CONROY BUSINESS PARK INC

exp. Services Inc.

exp. Services Inc.

exp. Services Inc.

BASEPLAN

DESIGN

CHECKED

CAD

PROJECT MANAGER

APPROVED

PROJECT

CONROY BUSINESS PARK  
2500 ST LAURENT BLVD. OTTAWA, ON

TITLE

EROSION & SEDIMENT CONTROL PLAN

PROJECT NO.

OTT-00238830-A0

DRAWING NO.

ESCP-1