

**TOPOGRAPHICAL PLAN OF SURVEY OF
PART OF LOT 26
CONCESSION 1 (OTTAWA FRONT)
Geographic Township of Nepean
CITY OF OTTAWA**

Prepared by Annis, O'Sullivan, Vollebakk Ltd.

Scale 1 : 200



MEASUREMENTS SHOWN ON THIS PLAN ARE IN METERS AND CAN BE CONVERTED TO FEET BY DIVIDING BY 0.3048

Surveyor's Certificate

This survey and plan are correct and in accordance with the Surveyors Act, the Surveyors Regulations and the Land Titles Act and the regulations made under them.

The survey was completed on the 24th day of March, 2017.

Edward M. Laroche
Date
Edward M. Laroche
Ontario Land Surveyor

Notes & Legend

- Denotes
- Survey Monument (Dashed)
- Survey Monument (Solid)
- Standard Iron Bar
- Short Standard Iron Bar
- Iron Bar
- Cut Cross
- Witness
- Measured
- Metres
- Annis, O'Sullivan, Vollebakk Ltd.
- Registration No. 44189
- Registered Plan M44827
- (AOC) Plan dated February 8, 2016
- (AOC) Plan dated February 16, 1973
- Inst. No. M21870
- Deciduous Tree
- Coniferous Tree
- Fire Hydrant
- Water Valve
- Maintenance Hole (Sanitary)
- Catch Basin
- Manhole
- Ballast
- Sign
- Metal Pole
- Light Standard
- Air Conditioner
- Location Elevations
- Top of Concrete Curb Elevation
- Top of Retaining Wall Elevation
- Centreline
- Concrete Retaining Wall
- Rebar Retaining Wall
- Property Line

Bearings are grid bearings, derived from the Western (Int) of Richmond Road shown to be N 35° 14' 30" E on Plan (AOC) dated February 8, 2016 and are NAD83 (Geogrid).

SITE AREA = 6061.8 m²

Topographic data was collected under Winter Conditions. Elevation of some topographical data that is otherwise visible.

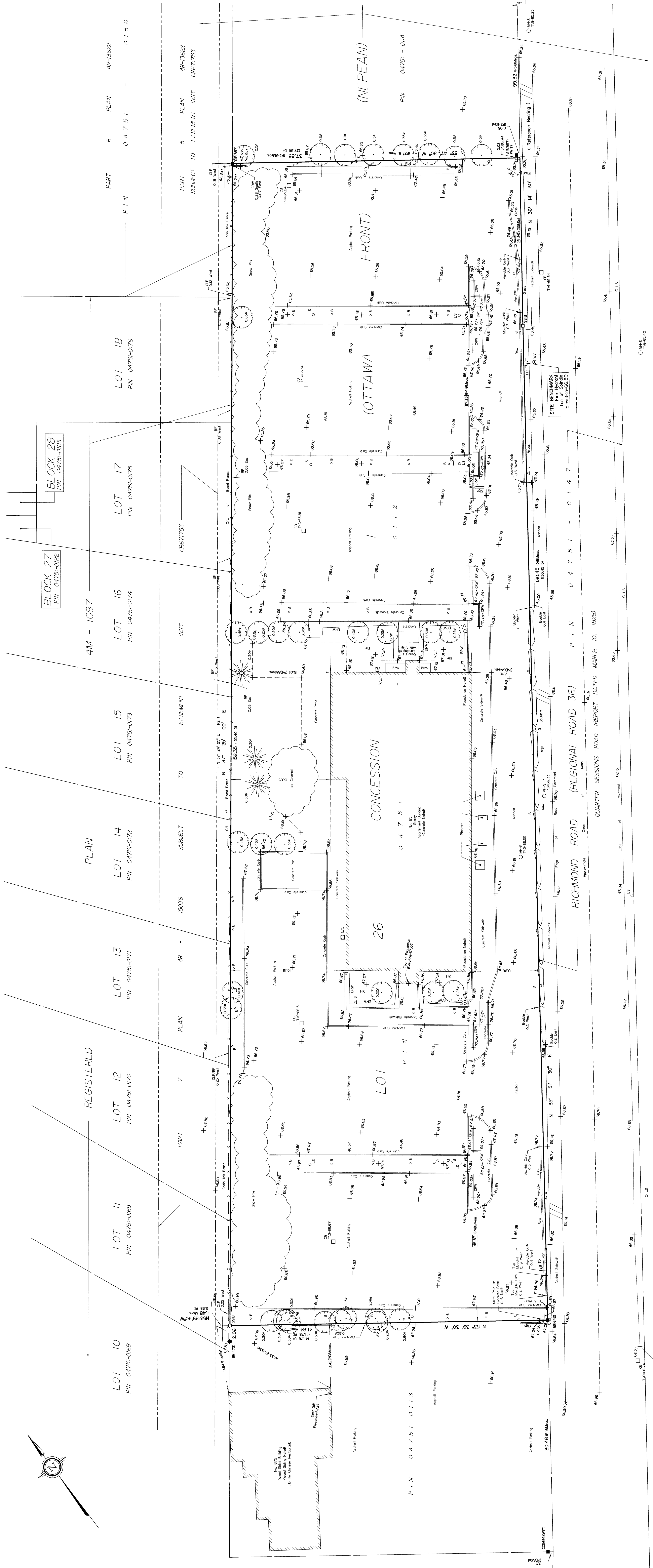
ELEVATION NOTES

- The elevations shown are referred to the CGD (1985) geoid datum.
- If the elevations of the ground surface are not shown, the elevations have not been altered or disturbed and that their relative elevation and description agree with the information shown on this drawing.

UTILITY NOTES

- This drawing cannot be accepted as acknowledging all of the utilities and it will be the responsibility of the user to contact the respective utility authorities for the location of all utilities.
- Only visible surface utilities were located.
- A field location of underground plant by the pertinent utility authority is mandatory before any work involving breaking ground, probing, excavating etc.

ANNIS, O'SULLIVAN, VOLLEBEKK LTD.
14 Concession Road, Suite 500
Phone: (613) 727-0800 / Fax: (613) 727-1079
E-mail: annis@annisov.com



© Annis, O'Sullivan, Vollebakk Ltd. 2017. This is a site plan prepared for Concession 26, Ottawa, Ontario. All rights reserved. No part of this publication may be reproduced, stored in a retrieval system, or transmitted, in any form or by any means, electronic, mechanical, photocopying, recording, or by any information storage and retrieval system, without the prior written permission of Annis, O'Sullivan, Vollebakk Ltd.