

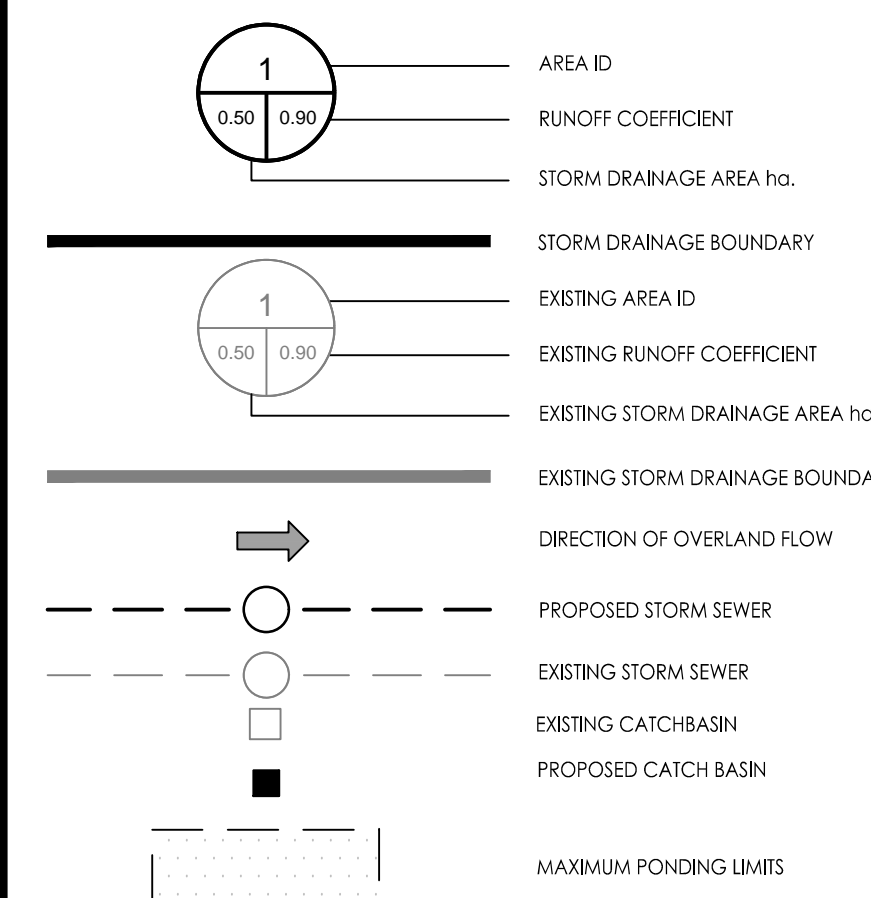
Copyright Reserved

The Contractor shall verify and be responsible for all dimensions. DO NOT scale the drawing - any errors or omissions shall be reported to Stantec without delay.  
The Copyrights to all designs and drawings are the property of Stantec. Reproduction or use for any purpose other than that authorized by Stantec is forbidden.



100-YEAR ROOF DRAIN SCHEDULE				
AREA ID	AREA (ha)	HEAD (m)	RELEASE RATE (L/s)	VOLUME (m <sup>3</sup> )
BLDG	0.11	0.15	7.5	37.3

Legend



Notes

- INTERNAL CISTERN, OIL GRIT SEPARATOR AND SUMP PUMP TO BE DESIGNED BY THE MECHANICAL CONSULTANT.
- ESTIMATED 100-YEAR DRAINAGE FROM EXISTING DEVELOPMENT (APPROX. 61 L/S) TO BE DIRECTED TO SITE STORM OUTLET THROUGH PROPOSED BUILDING INTERNAL PLUMBING SYSTEM.
- RUNOFF FROM PROPOSED DEVELOPMENT AREAS TO BE CONTROLLED TO 29.7 L/S THROUGH A CISTERN LOCATED IN THE UNDERGROUND PARKING WITH STORAGE CAPACITY FOR APPROXIMATELY 20 M<sup>3</sup> (LOCATION TO BE CONFIRMED BY MECHANICAL CONSULTANT).
- RUNOFF FROM PROPOSED DEVELOPMENT AREAS TO BE TREATED THROUGH AN OIL/GRIT SEPARATOR SIZED TO PROVIDE 80% TSS REMOVAL FOR A DRAINAGE AREA OF 0.16 HA AT 53% IMPERVIOUSNESS. OIL/GRIT SEPARATOR TO BE LOCATED IN THE UNDERGROUND PARKING (LOCATION TO BE CONFIRMED BY MECHANICAL CONSULTANT).

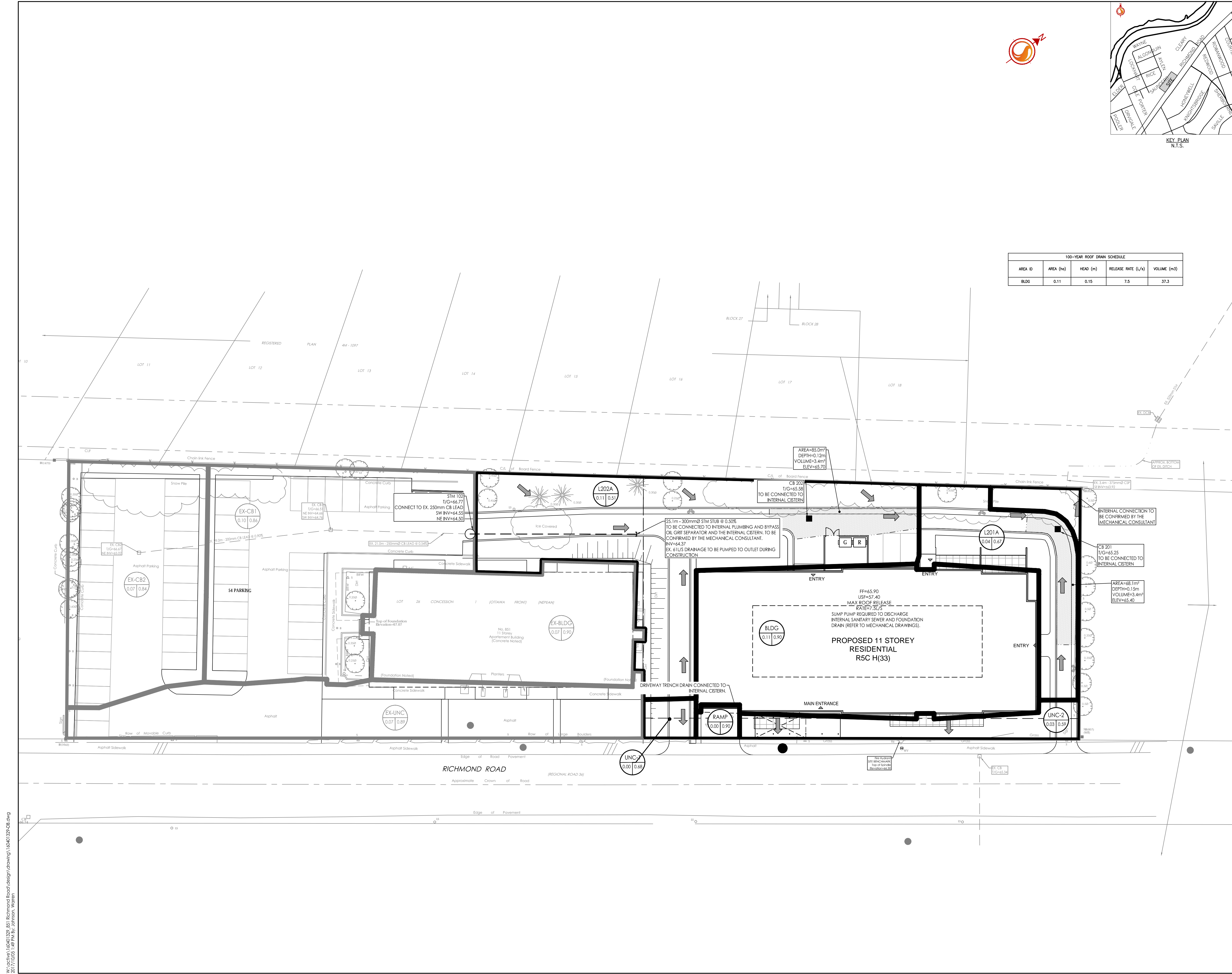
Revision	By	Appd.	Date
1 ISSUED FOR FIRST SUBMISSION	WAJ	SGG	17.10.05
	WAJ	SGG	17.06.14

Client/Project  
**HOMESTEAD LAND HOLDINGS LIMITED**

851 RICHMOND ROAD  
OTTAWA, ON

Title  
**STORM DRAINAGE PLAN**

Project No. 160401329	Scale 1:250	Sheet 6 of 6	Revision 1
--------------------------	----------------	-----------------	---------------



W:\active\160401329\_851 Richmond Road\Design\Drawings\160401329-08.dwg  
 2017/10/05 1:48 PM by: J. Johnson, W. J.