

No.	Issues and Revisions	Date
1.0	REVIEW	2017-09-26
2.0	SUBMISSION	2017-10-02

Key Map

Project Notes
 This design and drawing are the property of The Scott Wentworth Landscape Group Ltd. and are not to be copied or used for construction purposes without the Landscape Architect's express written consent.

The contractor shall check and verify all dimensions and report any discrepancies, error, or omissions to the Landscape Architect prior to commencing work.

Base plan information taken from Site Plan provided by:
 Company Name: Roderick Lahey Architect Inc.
 Dated: September 2017

Wentworth Landscapes
 13392 Loyalist Parkway R.R.1, Picton ON K0K 2T0
 613.547.3772

Consultants



Client
 HOMESTEAD LAND HOLDINGS LIMITED

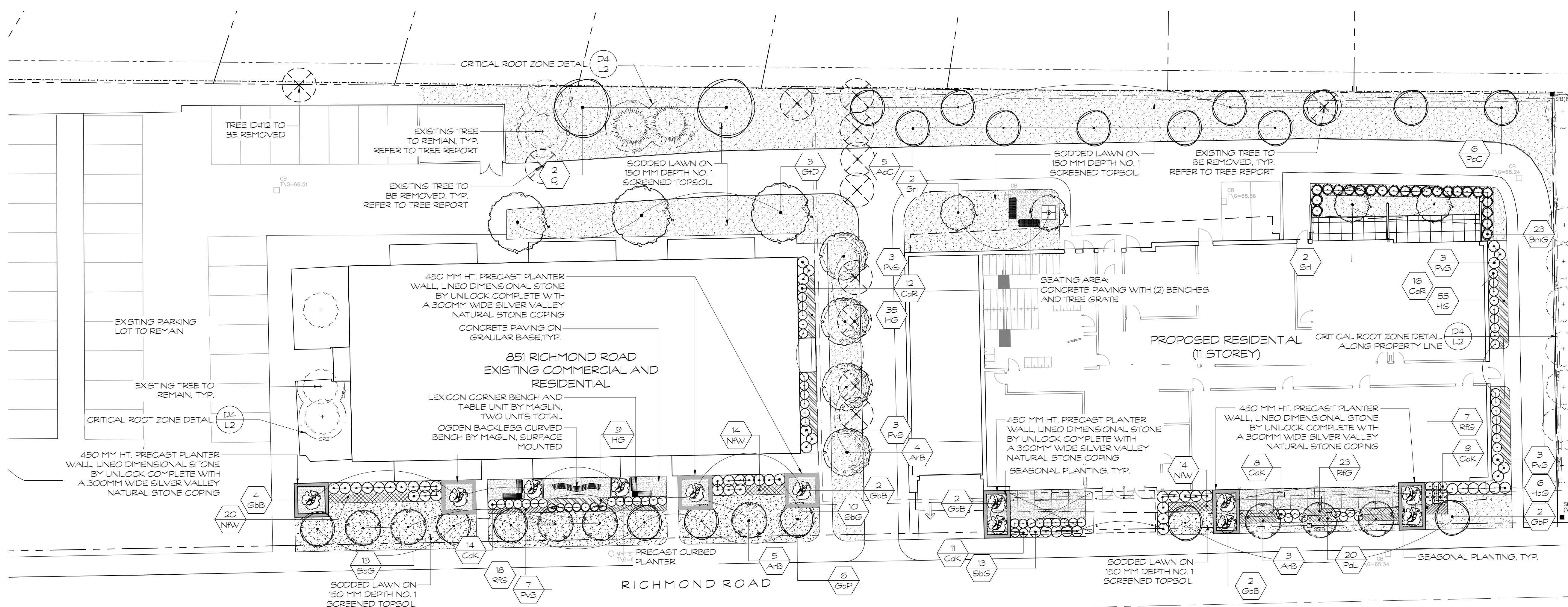
Project
 851 RICHMOND ROAD

Project Location
 851 RICHMOND ROAD
 OTTAWA, ON

Drawing Title
 SITE LANDSCAPE PLAN

Scale	
1:200	
Date	Plot Date
2017-09-18	2017-10-10
Designed By	Drawn By
TG	DD
Approved By	Drawing Number
SW	
Project Number	
17029	

L1

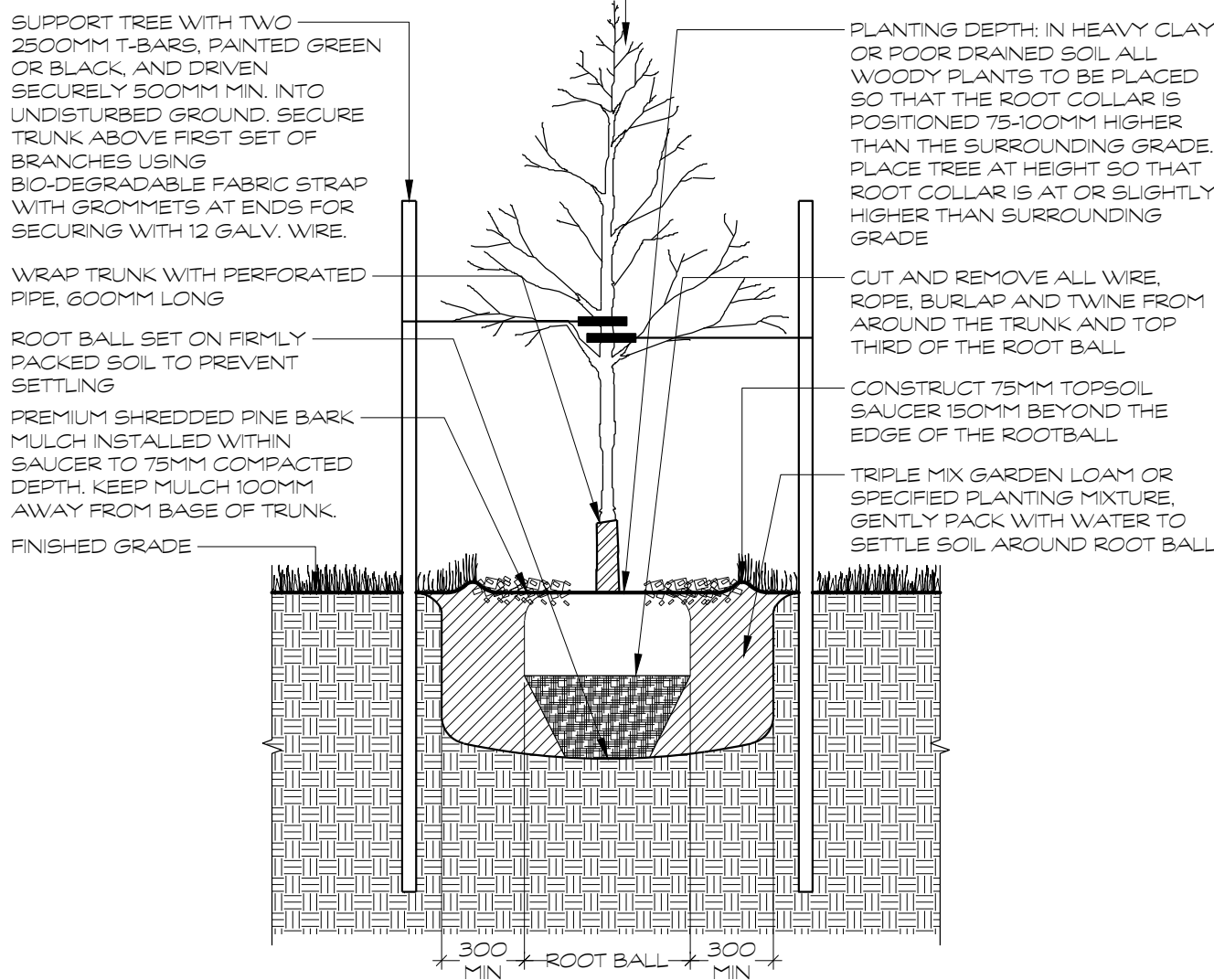
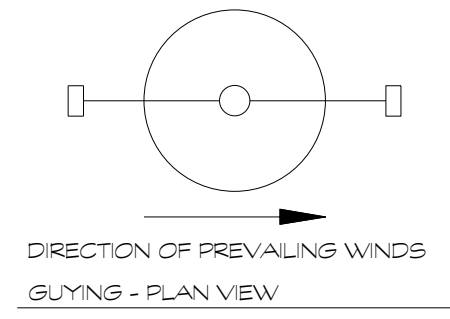


SYMBOL	QUANTITY	BOTANICAL NAME	COMMON NAME	SIZE	CONDITION	REMARKS
Deciduous and Coniferous Trees						
A-B	8	Acer rubrum Bowhall	Bowhall Red Maple	60mm	CT	
C	2	Cercidiphyllum japonicum	Katsura Tree	60mm	WB	
GbP	8	Ginkgo biloba Princeton Sentry	Princeton Sentry Maidenhair Tree	60mm	WB	
Gd	5	Gleditsia triacanthos Draves	Street Keeper Honey Locust	60mm	WB	
GdR	6	Ficus ciliolata Capital	Capital Ornamental Pear	60mm	WB	
S	4	Syringa reticulata Ivory Silk STD	Ivory Silk Lilac Tree STD	60mm	WB	STD
T	4	Tilia cordata Corzani	Corinthian Corzani Linden	60mm	WB	
Shrubs						
AcC	5	Amelanchier canadensis Clump	Canadian Serviceberry Clump	250cm	WB	Clump
BmG	23	Buxus microphylla Green Gem	Green Gem Boxwood	40cm	3gal	Potted
CgR	28	Centrea sinifolia Ruby Spice	Ruby Spice Summersweet	80cm	3gal	Potted
GbB	12	Ginkgo biloba Blagon	Green Spire Ginkgo	250 cm	CT	Pyramidal
HpG	6	Hydrangea paniculata Grandiflora	P.G. Hydrangea	150cm	7gal	STD
SgG	36	Spiraea bumalda Goldflame	Goldflame Spirea	60cm	3gal	Potted
Herbaceous						
CgK	42	Calamagrostis acutiflora Karl Foerster	Karl Foerster Feather Reed Grass	2gal	Potted	
Hs	99	Hemerocallis Gemie Shepherd	Gemie Shepherd Daylily	1gal	Potted	
NAW	28	Nepeta x fossarii Walker's Lav	Walker's Lav. Committ	1gal	Potted	
Pal	20	Perovskia atriplicifolia Little Spire	Dwarf Russian Sage	1gal	Potted	
Pvs	19	Panicum virgatum Shenandoah	Shenandoah Switch Grass	2gal	Potted	
RfG	48	Rudbeckia fulgida Goldsturm	Goldsturm Black-Eyed Susan	1gal	Potted	



PLANT MATERIAL QUALITY STANDARDS
ALL PLANT MATERIAL TO CONFORM TO THE LEVELS OF STANDARDS ESTABLISHED BY THE CANADIAN STANDARDS FOR NURSERY STOCK, EIGHTH EDITION, PUBLISHED BY THE CANADIAN NURSERY LANDSCAPE ASSOCIATION.

WATERING
ENSURE TREES ARE THOROUGHLY WATERED AT TIME OF PLANTING. CONTINUE WATERING AS REQUIRED TO PROVIDE ADEQUATE MOISTURE FOR THE DURATION OF THE SPECIFIED MAINTENANCE DURING ESTABLISHMENT PERIOD.

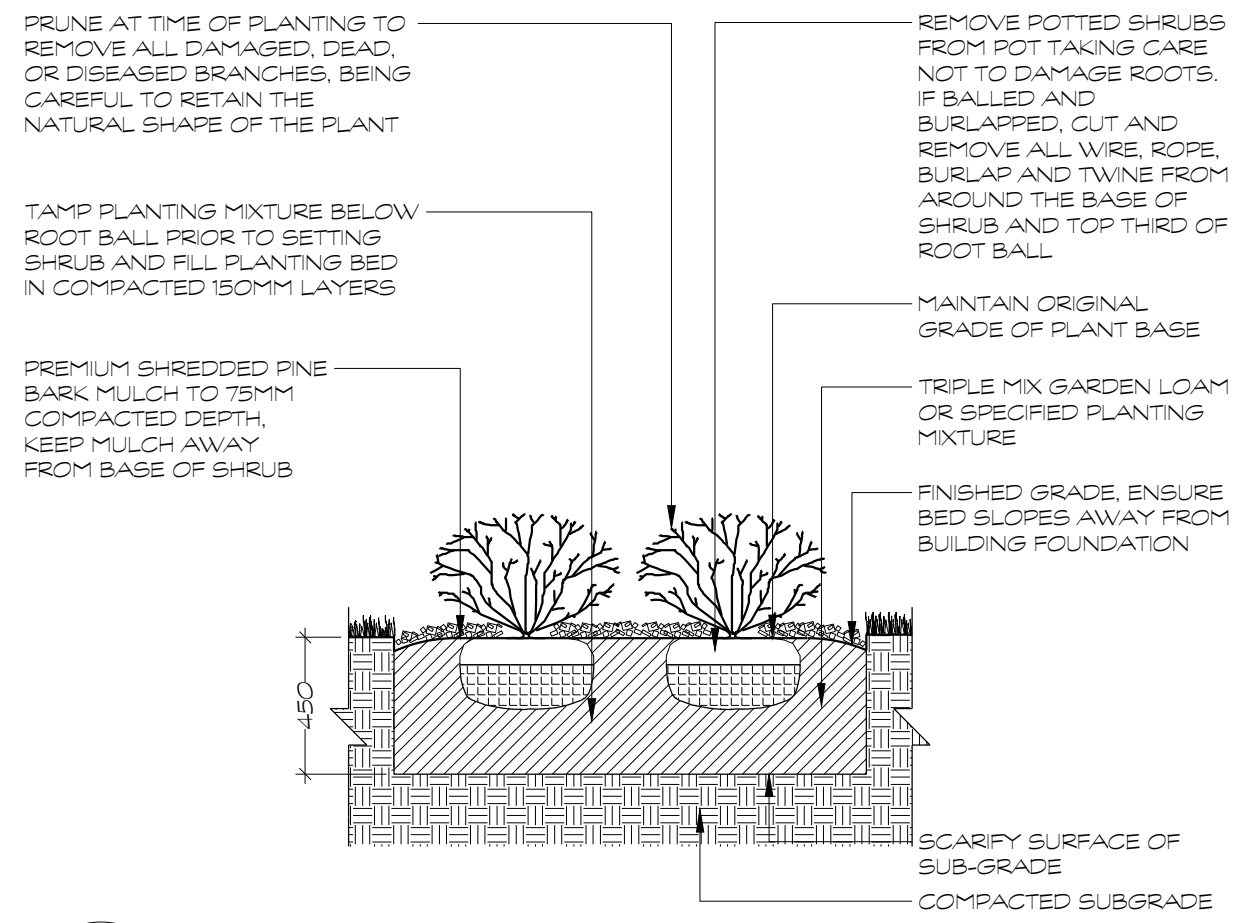


D1 DECIDUOUS TREE PLANTING
1:25

NOTES
-SHRUBS AS DETAILED REPRESENTS BOTH CONIFEROUS AND DECIDUOUS SPECIES
-PLACE MULCH TO EVEN HORIZONTAL GRADE
-SHRUBS PLANTED IN GROUPS SHALL BE SET IN CONTINUOUS PLANTING BEDS
-SHRUB BEDS TO BE BACKFILLED WITH TRIPLE MIX GARDEN LOAM PLANTING MIXTURE AS SPECIFIED TO A COMPACTED DEPTH OF 450MM
-FIRMLY COMPACTED BACKFILLED PLANTING MIXTURE TO ELIMINATE AIR POCKETS AND PREVENT SETTLEMENT

PLANT MATERIAL QUALITY STANDARDS
ALL PLANT MATERIAL TO CONFORM TO THE LEVELS OF STANDARDS ESTABLISHED BY THE CANADIAN STANDARDS FOR NURSERY STOCK, EIGHTH EDITION, PUBLISHED BY THE CANADIAN NURSERY LANDSCAPE ASSOCIATION.

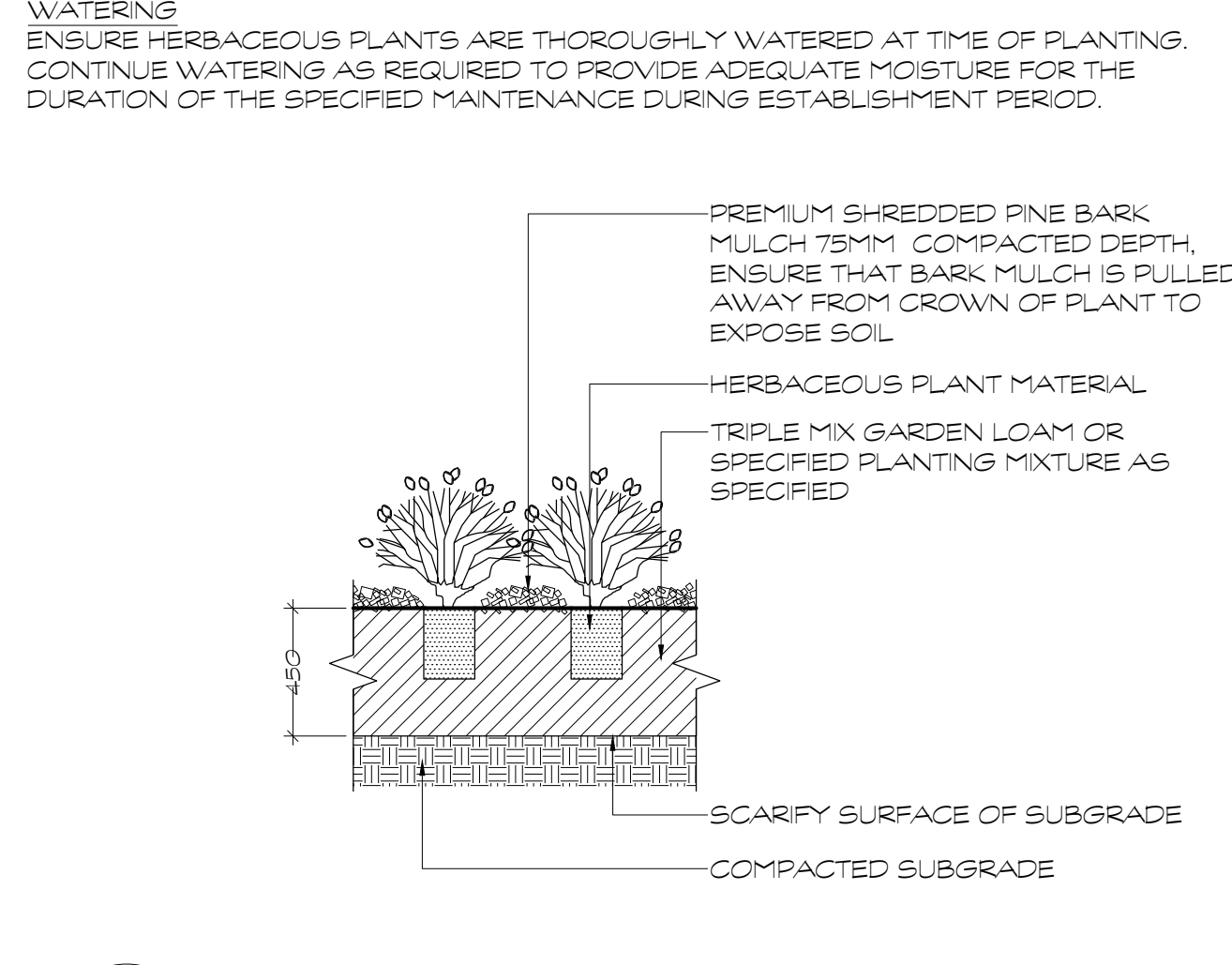
WATERING
ENSURE SHRUBS ARE THOROUGHLY WATERED AT TIME OF PLANTING. CONTINUE WATERING AS REQUIRED TO PROVIDE ADEQUATE MOISTURE FOR THE DURATION OF THE SPECIFIED MAINTENANCE DURING ESTABLISHMENT PERIOD.



D2 SHRUB PLANTING
1:25

PLANT MATERIAL QUALITY STANDARDS
ALL PLANT MATERIAL TO CONFORM TO THE LEVELS OF STANDARDS ESTABLISHED BY THE CANADIAN STANDARDS FOR NURSERY STOCK, EIGHTH EDITION, PUBLISHED BY THE CANADIAN NURSERY LANDSCAPE ASSOCIATION.

WATERING
ENSURE HERBACEOUS PLANTS ARE THOROUGHLY WATERED AT TIME OF PLANTING. CONTINUE WATERING AS REQUIRED TO PROVIDE ADEQUATE MOISTURE FOR THE DURATION OF THE SPECIFIED MAINTENANCE DURING ESTABLISHMENT PERIOD.



D3 HERBACEOUS PLANTING
1:25

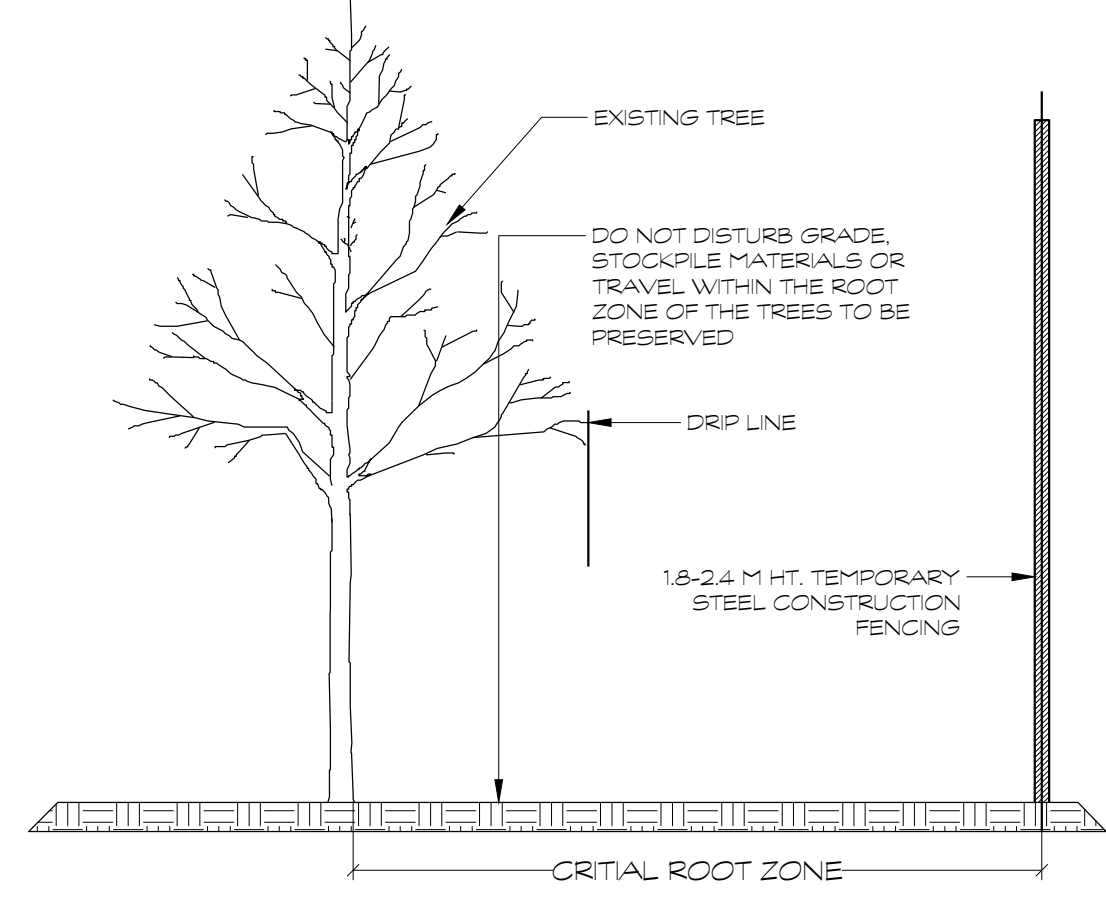
NOTES
1. REFER TO TREE PRESERVATION SPECIFICATIONS
2. MAINTAIN CRZ CONSTRUCTION FENCING IN PLACE FOR THE ENTIRE DURATION OF CONSTRUCTION
3. ALL CRZ FENCING SHALL BE IN PLACE PRIOR TO ANY SITE ALTERATIONS/CONSTRUCTION ACTIVITY AND TO BE MAINTAINED TO SPECIFICATION THROUGHOUT THE PROJECT UP TO AND INCLUDING THE COMPLETION OF ALL LANDSCAPE TREATMENTS
4. NO PERSON OR CONTRACTOR SHALL ENTER, MOVE OR ADJUST THE CRZ ONCE THE FENCING HAS BEEN ERECTED. THE CRZ SHALL NOT BE REMOVED UNTIL THE COMPLETION OF THE PROJECT.
5. DO NOT ATTACH SIGNS OR POSTERS TO THE TREE
6. DO NOT PLACE ANY MATERIAL OR EQUIPMENT WITHIN THE CRZ FENCING.
7. DO NOT RAISE OR LOWER THE EXISTING GRADE WITHIN THE CRZ OF THE TREE WITHOUT APPROVAL OF FORESTRY SERVICES
8. DO NOT DAMAGE THE ROOT SYSTEM, TRUNK OR BRANCHES OF ANY TREE
9. DO NOT TUNNEL OR BORE WHEN DIGGING WITHIN THE CRZ OF ANY TREE
10. ENSURE THAT EXHAUST FUMES FROM ALL EQUIPMENT ARE NOT DIRECTED TOWARDS ANY TREES CANOPY.

CRITICAL ROOT ZONE SIGNAGE
A SIGN THAT IS SIMILAR TO THE ILLUSTRATION TO THE RIGHT MUST BE MOUNTED ON ALL SIDES OF A TREE PROTECTION BARRIER. THE SIGN SHOULD BE A MINIMUM OF 40CM X 60CM (15.7X23.6) AND MADE OF WHITE GATOR BOARD OR EQUIVALENT MATERIAL.

CRITICAL ROOT ZONE (CRZ)
NO GRADE CHANGE, STORAGE OF MATERIALS, VEHICLES OR EQUIPMENT IS PERMITTED WITHIN THIS CRZ. THIS TREE PROTECTION BARRIER MUST NOT BE REMOVED WITHOUT THE WRITTEN AUTHORIZATION OF THE CITY OF OTTAWA.

CRITICAL ROOT ZONE (CRZ)
D = DIAMETER OF TRUNK IN CENTIMETRES
D x 10 CM = CRITICAL ROOT ZONE

THE CRITICAL ROOT ZONE IS ESTABLISHED AS BEING 10CM FROM THE TRUNK OF A TREE FOR EVERY CM OF TRUNK DIAMETER. THE TRUNK DIAMETER IS MEASURED AT A HEIGHT OF 1.2M FOR TREES OF 15CM DIA. AND GREATER AND AT A HEIGHT OF 0.3M FOR TREES LESS THAN 15CM DIA.



D4 TREE PROTECTION ZONE/ CRITICAL ROOT ZONE
1:25

Seal North

No.	Issues and Revisions	Date
1.0	REVIEW	2017-09-25
2.0	SUBMISSION	2017-10-02

Key Map

Project Notes
This design and drawing are the property of The Scott Wentworth Landscape Group Ltd. and are not to be copied or used for construction purposes without the Landscape Architect's express written consent.

The contractor shall check and verify all dimensions and report any discrepancies, error, or omissions to the Landscape Architect prior to commencing work.

Wentworth Landscapes
13392 Loyalist Parkway R.R.1, Picton ON K0K 2T0
613.547.3772

Consultants



Client HOMESTEAD LAND HOLDINGS LIMITED	
Project 851 RICHMOND ROAD	
Project Location 851 RICHMOND ROAD OTTAWA, ON	
Drawing Title SITE DETAILS	
Scale AS NOTED	
Date 2017-09-18	Plot Date 2017-10-10
Designed By TG	Drawn By DD
Approved By SW	Drawing Number
Project Number 17029	

L2