

### GENERAL NOTES

1. Contractor shall verify all dimensions on site and shall report any discrepancies to the architect prior to commencement of work.
2. Contractor must comply with all codes and bylaws and other regulations by authorities having jurisdiction over the work.
3. Do not scale this drawing.
4. This drawing may not be used for construction unless sealed/signed by the architect.
5. Copyright of this drawings is reserved.



## GENERAL NOTES

1. All general site information and conditions compiled from survey.
2. Do not scale this drawing.
3. Report any discrepancies prior to commencing work. No responsibility is born by the Landscape Architect for unknown subsurface conditions.
4. Contractor to check and verify all dimensions on site and report any errors and/or omissions.
5. Retention of the site is not deemed damaged as a result of construction activities.
6. Drawing may not be used for construction until signed by Landscape Architect as issued for construction.
7. The accuracy of the position of utilities is not guaranteed.
8. Individual utility co. must be contacted for confirmation of utility existence and location prior to digging.
9. This drawing is an instrument of service and requires the seal and signature of the Landscape Architect for use. Copyright is reserved by Lashley+Associates Corporation.

## LANDSCAPING NOTES

1. Plant material shall be No. 1 Grade and shall comply with the Metric Guide Specifications for Nursery stock (latest edition), published by Canadian Nursery Trades Association.
2. Plant substitutions shall not be permitted unless approved by the Landscape Architect.
3. Tuff areas shall be No. 1 Nursery grade sod conforming to the Canadian Nursery Sod Growers Specifications, installed on min. 150mm topsoil over scarified acceptable subgrade.
4. Contractor shall guarantee all plant material for a period of one (1) year from the date of substantial completion.
5. Ongoing maintenance of planting prior to digging.
6. All plant beds shall be mulched with 75mm compressed bark mulch.
7. Topsoil shall be garden soil mixture sandy loam with min. 10% organic matter and peat moss added at rate of 10% topsoil to be approved by Landscape Architect.

4	ISSUED FOR SITE PLAN SUBMISSION	2017/08/29
3	ISSUED FOR CLIENT REVIEW	2017/08/11
2	ISSUED FOR CLIENT REVIEW	2017/05/02
1	ISSUED FOR CLIENT REVIEW	2017/04/10
NO. ISSUE		DATE (YY/MM/DD)
REVISIONS		

<p>ORIENTATION</p> 	<p>SEAL</p> 
--	---

  
**LASHLEY**  
ASSOCIATES  
LANDSCAPE ARCHITECTURE  
AND SITE ENGINEERING

203-860 GLADSTONE AVENUE  
OTTAWA, ON K1Y 2K6

T 613 233 8370  
F 613 233 4051

W [lashley.ca](http://lashley.ca)  
E [Mail@lashley.ca](mailto:Mail@lashley.ca)

CLIENT

KANATA MUSLIM  
ASSOCIATION

PROJECT

KMA MOSQUE AND  
COMMUNITY CENTER

351 SANDHILL ROAD  
KANATA, ON K2K 1X7

DRAWING TITLE

**PRE DEVELOPMENT- EXISTING  
VEGETATION MAP**

DRAWN BY	A.K	DRAWING NO.
REVIEWED BY	D.L.	<b>TP-01</b>
START DATE	2017/03/29	
PROJECT NO.17659-1		REVISION NO.

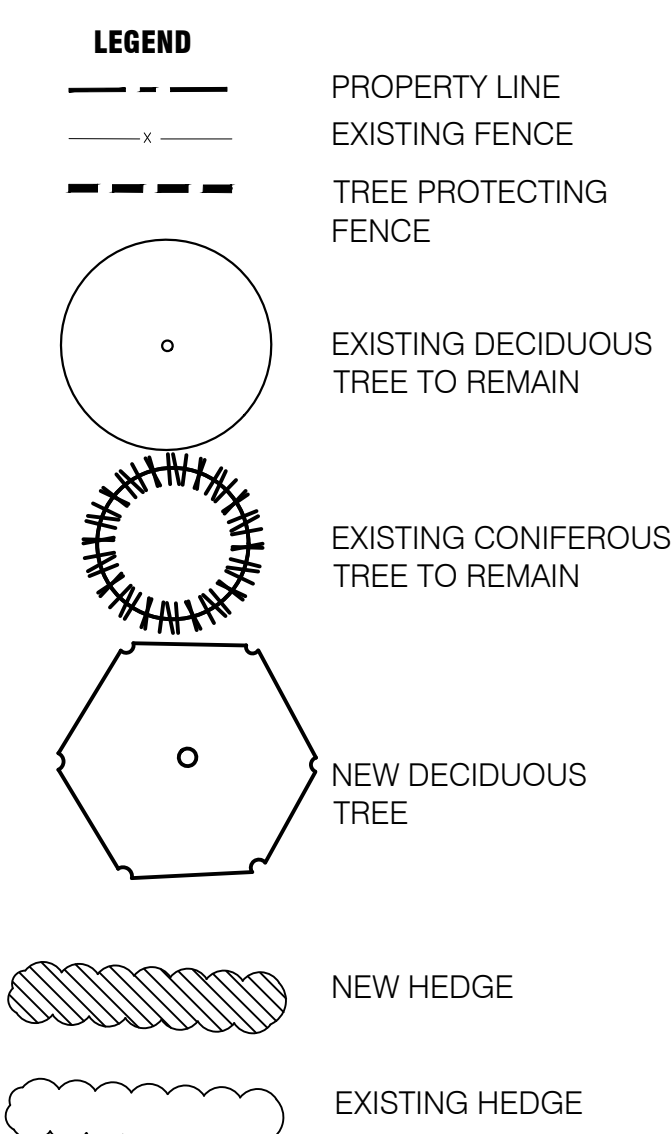
EXISTING TREE TO REMAIN			
NO.	SPECIES	SIZE (DBH)	HEALTH + CONDITION
4	RED PINE / <i>Pinus resinosa</i>	23CM	FAIR/BACK FALLING BRANCHES
5	RED PINE / <i>Pinus resinosa</i>	19CM	FAIR/BACK
14	WHITE SPRUCE / <i>Picea glauca</i>	96CM	GOOD
15	WHITE SPRUCE / <i>Picea glauca</i>	30CM	GOOD
16	WHITE SPRUCE / <i>Picea glauca</i>	31CM	GOOD
17	WHITE SPRUCE / <i>Picea glauca</i>	29CM	GOOD
18	WHITE SPRUCE / <i>Picea glauca</i>	22CM	GOOD
19	WHITE SPRUCE / <i>Picea glauca</i>	21CM	GOOD
20	WHITE SPRUCE / <i>Picea glauca</i>	38CM	GOOD
21	WHITE SPRUCE / <i>Picea glauca</i>	22CM	GOOD
22	WHITE SPRUCE / <i>Picea glauca</i>	38CM	GOOD
23	WHITE SPRUCE / <i>Picea glauca</i>	38CM	GOOD
24	WHITE SPRUCE / <i>Picea glauca</i>	28CM	GOOD
25	WHITE SPRUCE / <i>Picea glauca</i>	33CM	GOOD
26	WHITE SPRUCE / <i>Picea glauca</i>	25CM	GOOD
27	WHITE SPRUCE / <i>Picea glauca</i>	29CM	GOOD
28	WHITE SPRUCE / <i>Picea glauca</i>	29CM	GOOD
29	WHITE SPRUCE / <i>Picea glauca</i>	30CM	GOOD
30	WHITE SPRUCE / <i>Picea glauca</i>	30CM	GOOD
31	WHITE SPRUCE / <i>Picea glauca</i>	26CM	GOOD
32	WHITE SPRUCE / <i>Picea glauca</i>	31CM	GOOD
33	WHITE SPRUCE / <i>Picea glauca</i>	31CM	GOOD
34	WHITE SPRUCE / <i>Picea glauca</i>	29CM	GOOD
35	WHITE SPRUCE / <i>Picea glauca</i>	29CM	GOOD
36	WHITE SPRUCE / <i>Picea glauca</i>	31CM	GOOD
37	WHITE SPRUCE / <i>Picea glauca</i>	31CM	GOOD
38	WHITE SPRUCE / <i>Picea glauca</i>	31CM	GOOD
39	WHITE SPRUCE / <i>Picea glauca</i>	27CM	GOOD
40	WHITE SPRUCE / <i>Picea glauca</i>	34CM	GOOD

NO.	SPECIES	SIZE (DBH)	HEALTH + CONDITION
41	WHITE SPRUCE / <i>Picea glauca</i>	29CM	GOOD
42	WHITE SPRUCE / <i>Picea glauca</i>	29CM	GOOD
43	WHITE SPRUCE / <i>Picea glauca</i>	29CM	GOOD
44	WHITE SPRUCE / <i>Picea glauca</i>	28CM	GOOD
45	WHITE SPRUCE / <i>Picea glauca</i>	28CM	GOOD
47	WHITE SPRUCE / <i>Picea glauca</i>	29CM	GOOD
48	WHITE SPRUCE / <i>Picea glauca</i>	32CM	GOOD
49	WHITE SPRUCE / <i>Picea glauca</i>	31CM	GOOD
50	WHITE SPRUCE / <i>Picea glauca</i>	31CM	GOOD
51	WHITE SPRUCE / <i>Picea glauca</i>	30CM	GOOD
52	WHITE SPRUCE / <i>Picea glauca</i>	31CM	GOOD
53	WHITE SPRUCE / <i>Picea glauca</i>	29CM	GOOD
54	WHITE SPRUCE / <i>Picea glauca</i>	35CM	GOOD
55	WHITE SPRUCE / <i>Picea glauca</i>	31CM	GOOD
56	WHITE SPRUCE / <i>Picea glauca</i>	30CM	GOOD
58	MANITOBA MAPLE / <i>Acer negundo</i>	18CM DBH 23-30" M	GOOD/FAIR-SUSCEPTIBLE TO CAN TRUNK ROT
60	MANITOBA MAPLE / <i>Acer negundo</i>	29CM	GOOD-MINOR LOWER JMB DISEASE
77	RED PINE / <i>Pinus resinosa</i>	22CM	FAIR
78	WHITE CEDAR / <i>Thuja occidentalis</i>	49CM	GOOD

TREES TO BE REMOVED IN PHASE 1			
NO.	SPECIES	SIZE (DBH)	HEALTH + CONDITION
1	ASH / <i>Fraxinus</i> spp.	28CM	POOR
2	ASH / <i>Fraxinus</i> spp.	27CM	POOR
3	ASH / <i>Fraxinus</i> spp.	22CM	POOR
4	RED PINE/ <i>Pinus resinosa</i>	34CM	FAIR/DIEBACK
5	RED PINE/ <i>Pinus resinosa</i>	26CM	FAIR
6	RED PINE/ <i>Pinus resinosa</i>	18CM	FAIR
9	WHITE SPRUCE / <i>Picea glauca</i>	19CM	GOOD/FAIR
10	ASH / <i>Fraxinus</i> spp.	27CM	POOR
11	ASH / <i>Fraxinus</i> spp.	31CM	POOR
12	WHITE SPRUCE / <i>Picea glauca</i>	29CM	GOOD
13	WHITE SPRUCE / <i>Picea glauca</i>	34CM	GOOD
46	WHITE SPRUCE / <i>Picea glauca</i>	27CM	DEAD
57	ASPEN / <i>Populus</i> spp.	18, 16CM	DEAD/DOUBLE STEM
61	MANITOWA MAPLE/ <i>Acer negundo</i>	42CM	POOR-LARGE SNAPPED LIMBS SEVERE HAZARD
67	WHITE SPRUCE / <i>Picea glauca</i>	28CM	GOOD
68	ASH / <i>Fraxinus</i> spp.	33CM	POOR
69	ASH / <i>Fraxinus</i> spp.	36CM	POOR
70	ASH / <i>Fraxinus</i> spp.	28CM	POOR
71	ASH / <i>Fraxinus</i> spp.	37CM	FAIR
72	CRABAPPLE/ <i>Malus</i> spp.	17, 10CM	FAIR
73	RED PINE/ <i>Pinus resinosa</i>	25CM	FAIR
74	RED PINE/ <i>Pinus resinosa</i>	27CM	GOOD
75	ASH / <i>Fraxinus</i> spp.	38CM	POOR
76	RED PINE/ <i>Pinus resinosa</i>	21CM	POOR

TREES TO BE REMOVED IN PHASE 2			
NO.	SPECIES	SIZE (DBH)	HEALTH + CONDITION
62	PAPERBIRCH/ <i>Betula papyrifera</i>	26/ 29CM	FAIR-DOUBLE STEMMED, SNAPPED UPPER LIMBS, DAMAGED BARK
63	NORWAY MAPLE / <i>Acer platanoides</i>	39CM	GOOD
64	NORWAY MAPLE / <i>Acer platanoides</i>	28CM	GOOD
65	NORWAY MAPLE / <i>Acer platanoides</i>	30CM	GOOD
66	NORWAY MAPLE / <i>Acer platanoides</i>	34CM	GOOD





- ## GENERAL NOTES
- Contractor shall verify all dimensions on site and shall report any discrepancies to the architect prior to commencement of work.
  - Contractor must comply with all codes and bylaws and other regulations by authorities having jurisdiction over the work.
  - Do not scale this drawing.
  - This drawing may not be used for construction unless sealed/signed by the architect.
  - Copyright of this drawings is reserved.
- ## GENERAL NOTES
- All general site information and conditions obtained from survey.
  - Do not scale this drawing.
  - Report any discrepancies prior to commencing work. No responsibility is born by the Landscape Architect for unknown subsurface conditions.
  - Contractor to check and verify all dimensions on site and report any errors and/or omissions.
  - Reinstall all areas and items damaged as a result of construction activities.
  - Drawing may not be used for construction until signed by Landscape Architect as issued for construction.
  - The accuracy of the position of utilities is not guaranteed.
  - Individual utility co. must be contacted for confirmation of utility existence and location prior to dig.
  - This drawing is an instrument of service and requires the permission of the Landscape Architect for use. Copyright is reserved by Lashley+Associates corporation.
- ## LANDSCAPING NOTES
- Plant material shall be No 1 Grade and shall comply with the Metric Grade Specifications for Nursery stock (latest edition), published by Canadian Nursery Trades Association.
  - Plant material shall be No 1 Grade and shall comply with the Landscape Architect.
  - Turf areas shall be No. 1 Nursery grade sod certified to the Canadian Nursery Sod Growers Specifications, installed on min. 150mm topsoil over scarified acceptable subgrade.
  - Contractor shall guarantee all plant material for a period of one (1) full year from the date of substantial completion.
  - Obtain approval of planting prior to digging.
  - All plant beds shall be mulched with 75mm composted pine bark mulch.
  - Topsoil shall be garden silt mixture sandy loam with min. 5% organic material and peat moss added at a rate of 1-1.10; topsoil to be approved by Landscape Architect.

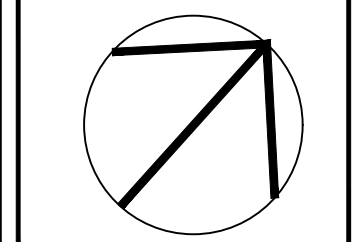

4	ISSUED FOR SITE PLAN SUBMISSION	2017/ 08/ 29
3	ISSUED FOR CLIENT REVIEW	2017/ 08/ 11
2	ISSUED FOR CLIENT REVIEW	2017/ 05/ 02
1	ISSUED FOR CLIENT REVIEW	2017/ 04/ 10
		DATE (YY/MM/DD)

## REVISIONS

## ORIENTATION

SEAL

SEAL



CLIENT

KANATA MUSLIM  
ASSOCIATION

PROJECT

KMA MOSQUE AND  
COMMUNITY CENTER  
351 SANDHILL ROAD  
KANATA, ON K2K 1X7

DRAWING TITLE

## POST DEVELOPMENT VEGETATION MAP

DRAWN BY

△

DRAWING NO.

REVIEWED

0

1000

REVIEWED  
START DATE

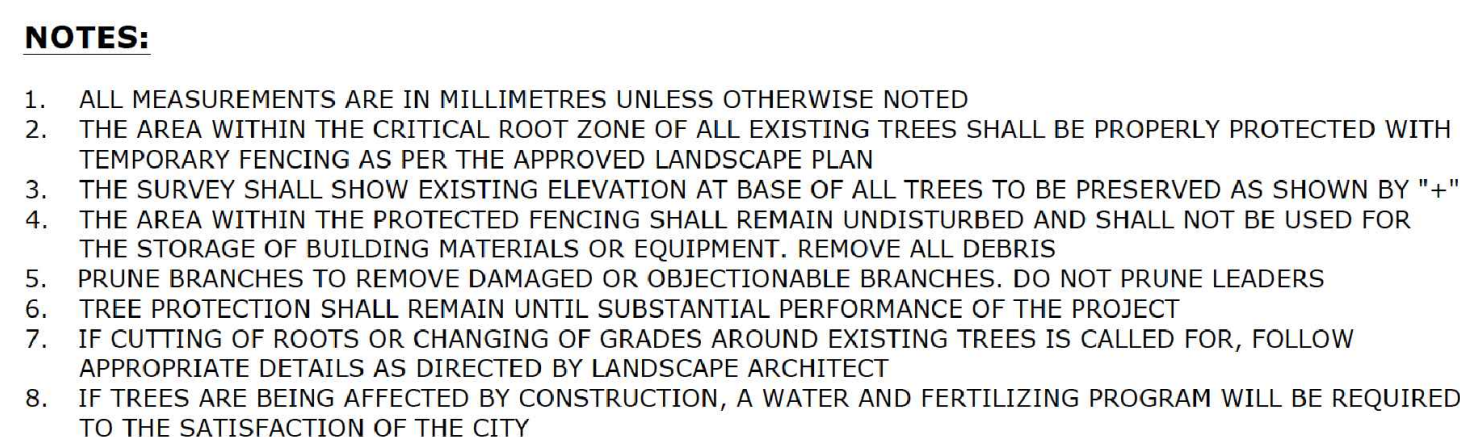
D.

# TP-02

START DATE  
\_\_\_\_\_

03/2

11-02



## 2 TREE PROTECTION FENCING

NTS

TREE INVENTORY			
NO.	SPECIES	SIZE (DBH)	HEALTH + CONDITION
4	RED PINE/ <i>Pinus resinosa</i>	23CM	FAIR/DIEBACK FALLING BRANCHES
5	RED PINE/ <i>Pinus resinosa</i>	19CM	FAIR/DIEBACK
14	WHITE SPRUCE / <i>Picea glauca</i>	26CM	GOOD
15	WHITE SPRUCE / <i>Picea glauca</i>	30CM	GOOD
16	WHITE SPRUCE / <i>Picea glauca</i>	31CM	GOOD
17	WHITE SPRUCE / <i>Picea glauca</i>	29CM	GOOD
18	WHITE SPRUCE / <i>Picea glauca</i>	22CM	GOOD
19	WHITE SPRUCE / <i>Picea glauca</i>	21CM	GOOD
20	WHITE SPRUCE / <i>Picea glauca</i>	36CM	GOOD
21	WHITE SPRUCE / <i>Picea glauca</i>	22CM	GOOD
22	WHITE SPRUCE / <i>Picea glauca</i>	36CM	GOOD
23	WHITE SPRUCE / <i>Picea glauca</i>	38CM	GOOD
24	WHITE SPRUCE / <i>Picea glauca</i>	28CM	GOOD
25	WHITE SPRUCE / <i>Picea glauca</i>	32CM	GOOD
26	WHITE SPRUCE / <i>Picea glauca</i>	25CM	GOOD
27	WHITE SPRUCE / <i>Picea glauca</i>	29CM	GOOD
28	WHITE SPRUCE / <i>Picea glauca</i>	29CM	GOOD
29	WHITE SPRUCE / <i>Picea glauca</i>	30CM	GOOD
30	WHITE SPRUCE / <i>Picea glauca</i>	30CM	GOOD
31	WHITE SPRUCE / <i>Picea glauca</i>	26CM	GOOD
32	WHITE SPRUCE / <i>Picea glauca</i>	31CM	GOOD
33	WHITE SPRUCE / <i>Picea glauca</i>	31CM	GOOD
34	WHITE SPRUCE / <i>Picea glauca</i>	29CM	GOOD
35	WHITE SPRUCE / <i>Picea glauca</i>	29CM	GOOD
36	WHITE SPRUCE / <i>Picea glauca</i>	31CM	GOOD
37	WHITE SPRUCE / <i>Picea glauca</i>	31CM	GOOD
38	WHITE SPRUCE / <i>Picea glauca</i>	31CM	GOOD
39	WHITE SPRUCE / <i>Picea glauca</i>	27CM	GOOD
40	WHITE SPRUCE / <i>Picea glauca</i>	34CM	GOOD

NO.	SPECIES	SIZE (DBH)	HEALTH + CONDITION
41	WHITE SPRUCE / <i>Picea glauca</i>	29CM	GOOD
42	WHITE SPRUCE / <i>Picea glauca</i>	29CM	GOOD
43	WHITE SPRUCE / <i>Picea glauca</i>	29CM	GOOD
44	WHITE SPRUCE / <i>Picea glauca</i>	28CM	GOOD
45	WHITE SPRUCE / <i>Picea glauca</i>	28CM	GOOD
47	WHITE SPRUCE / <i>Picea glauca</i>	29CM	GOOD
48	WHITE SPRUCE / <i>Picea glauca</i>	32CM	GOOD
49	WHITE SPRUCE / <i>Picea glauca</i>	31CM	GOOD
50	WHITE SPRUCE / <i>Picea glauca</i>	31CM	GOOD
51	WHITE SPRUCE / <i>Picea glauca</i>	30CM	GOOD
52	WHITE SPRUCE / <i>Picea glauca</i>	31CM	GOOD
53	WHITE SPRUCE / <i>Picea glauca</i>	29CM	GOOD
54	WHITE SPRUCE / <i>Picea glauca</i>	35CM	GOOD
55	WHITE SPRUCE / <i>Picea glauca</i>	31CM	GOOD
56	WHITE SPRUCE / <i>Picea glauca</i>	30CM	GOOD
58	MANITOBA MAPLE / <i>Acer negundo</i>	18CM	GOOD
59	MANITOBA MAPLE / <i>Acer negundo</i>	26.28: 23.20C M	GOOD-FAIR-SUSCEPTIBLE TO THUNK ROT
60	MANITOBA MAPLE / <i>Acer negundo</i>		GOOD-MODER LOWLY JUNKY BACK
77	RED PINE / <i>Pinus resinosa</i>	22CM	FAIR
78	WHITE CEDAR / <i>Thuja occidentalis</i>		GOOD



## TREE CONSERVATION REPORT

PROJECT NAME:	Kanata Muslim Association Community Centre SPS Landscape Design
PROJECT NO.	17659-1
LOCATION	351 Sandhill Kanata, ON
DATE:	August 2017

Refer to attached drawings and aerials for further details (TP-01 and TP-02)

SIZE OF DEVELOPMENT AREA (HECTARES)	NUMBER OF TREES ON SITE	NUMBER OF TREES TO BE REMOVED IN PHASE1 + PHASE2	NUMBER OF TREES TO BE RETAINED AND PROTECTED
.82	78 (WITHIN PROPERTY BOUNDARY)	29 (WITHIN PROPERTY BOUNDARY)	49 (WITHIN PROPERTY BOUNDARY)

### 2.0 TREE INVENTORY WITHIN PROPERTY LINE

TREE NO.	TREE SPECIES	SIZE (DBH)	CONDITION (GOOD, FAIR, POOR, OR DEAD)	NOTES
1	Ash/ <i>Fraxinus spp.</i>	28cm	Poor	
2	Ash/ <i>Fraxinus spp.</i>	27cm	Poor	
3	Ash/ <i>Fraxinus</i>	24cm	Poor	
4	Red Pine/ <i>Pinus resinosa</i>	23cm	Fair	Crown dieback, Falling branches
5	Red Pine/ <i>Pinus resinosa</i>	19cm	Fair	Dieback
6	Red Pine/ <i>Pinus resinosa</i>	22cm	Fair	Dieback



7	Red Pine/ <i>Pinus resinosa</i>	26cm	Fair	
8	Red Pine/ <i>Pinus resinosa</i>	18cm	Fair	
9	White Spruce/ <i>Picea glauca</i>	19cm	Good/Fair	
10	Ash/ <i>Fraxinus spp.</i>	27cm	Poor	
11	Ash/ <i>Fraxinus spp.</i>	31cm	Poor	
12	White Spruce/ <i>Picea glauca</i>	29cm	Good	
13	White Spruce/ <i>Picea glauca</i>	34cm	Good	
14	White Spruce/ <i>Picea glauca</i>	26cm	Good	
15	White Spruce/ <i>Picea glauca</i>	30cm	Good	
16	White Spruce/ <i>Picea glauca</i>	31cm	Good	
17	White Spruce/ <i>Picea glauca</i>	29cm	Good	
18	White Spruce/ <i>Picea glauca</i>	22cm	Good	
19	White Spruce/ <i>Picea glauca</i>	21cm	Good	
20	White Spruce/ <i>Picea glauca</i>	36cm	Good	
21	White Spruce/ <i>Picea glauca</i>	22cm	Good	
22	White Spruce/ <i>Picea glauca</i>	36cm	Good	
23	White Spruce/ <i>Picea glauca</i>	38cm	Good	
24	White Spruce/ <i>Picea glauca</i>	28cm	Good	
25	White Spruce/ <i>Picea glauca</i>	32cm	Good	
26	White Spruce/ <i>Picea glauca</i>	25cm	Good	
27	White Spruce/ <i>Picea glauca</i>	29cm	Fair	
28	White Spruce/ <i>Picea glauca</i>	29cm	Good	
29	White Spruce/ <i>Picea glauca</i>	30cm	Good	



30	White Spruce/ <i>Picea glauca</i>	30cm	Fair	
31	White Spruce/ <i>Picea glauca</i>	26cm	Fair	
32	White Spruce/ <i>Picea glauca</i>	31cm	Good	
33	White Spruce/ <i>Picea glauca</i>	31cm	Good	
34	White Spruce/ <i>Picea glauca</i>	29cm	Fair	
35	White Spruce/ <i>Picea glauca</i>	29cm	Good	
36	White Spruce/ <i>Picea glauca</i>	31cm	Good	
37	White Spruce/ <i>Picea glauca</i>	31cm	Good	
38	White Spruce/ <i>Picea glauca</i>	31cm	Fair	
39	White Spruce/ <i>Picea glauca</i>	27cm	Good	
40	White Spruce/ <i>Picea glauca</i>	34cm	Good	
41	White Spruce/ <i>Picea glauca</i>	29cm	Good	
42	White Spruce/ <i>Picea glauca</i>	29cm	Fair	
43	White Spruce/ <i>Picea glauca</i>	29cm	Good	
44	White Spruce/ <i>Picea glauca</i>	28cm	Good	
45	White Spruce/ <i>Picea glauca</i>	28cm	Poor	
46	White Spruce/ <i>Picea glauca</i>	27cm	Dead	
47	White Spruce/ <i>Picea glauca</i>	29cm	Good	
48	White Spruce/ <i>Picea glauca</i>	32cm	Good	
49	White Spruce/ <i>Picea glauca</i>	31cm	Good	
50	White Spruce/ <i>Picea glauca</i>	31cm	Good	
51	White Spruce/ <i>Picea glauca</i>	30cm	Fair	
52	White Spruce/ <i>Picea glauca</i>	31cm	Fair	



53	White Spruce/ <i>Picea glauca</i>	29cm	Fair	
54	White Spruce/ <i>Picea glauca</i>	35cm	Poor	
55	White Spruce/ <i>Picea glauca</i>	31cm	Fair	
56	White Spruce/ <i>Picea glauca</i>	30cm	Good	
57	Aspen/ <i>Populus spp.</i>	18; 16cm	Dead	Double stemmed
58	Manitoba Maple/ <i>Acer negundo</i>	18cm	Good	
59	Manitoba Maple/ <i>Acer negundo</i>	26; 28; 23; 20cm	Good/Fair	Multi stemmed; susceptible to trunk rot
60	Manitoba Maple/ <i>Acer negundo</i>	29cm	Good	Minor lower limb dieback
61	Manitoba Maple/ <i>Acer negundo</i>	42cm	Poor	Large snapped limb; safety hazard.
62	Paper Birch/ <i>Betula papyrifera</i>	26; 29cm	Fair	Double stemmed; snapped upper limbs; bark damage
63	Norway Maple/ <i>Acer platanoides</i>	39cm	Good	
64	Norway Maple/ <i>Acer platanoides</i>	28cm	Good	
65	Norway Maple/ <i>Acer platanoides</i>	30cm	Good	
66	Norway Maple/ <i>Acer platanoides</i>	34cm	Good	
67	White Spruce/ <i>Picea glauca</i>	28cm	Good	
68	Ash/ <i>Fraxinus spp.</i>	33cm	Poor	
69	Ash/ <i>Fraxinus spp.</i>	36cm	Poor	
70	Ash/ <i>Fraxinus spp.</i>	28cm	Poor	



71	Ash/ <i>Fraxinus spp.</i>	37cm	Poor	
72	Crabapple/ <i>Malus spp.</i>	17; 10cm	Fair	Double stemmed
73	Red Pine/ <i>Pinus resinosa</i>	25cm	Good	
74	Red Pine/ <i>Pinus resinosa</i>	27cm	Good	
75	Ash/ <i>Fraxinus spp.</i>	39cm	Poor	
76	Red Pine/ <i>Pinus resinosa</i>	21cm	Poor	
77	Red pine/ <i>Pinus resinosa</i>	22cm	Fair	
78	Eastern White Cedar/ <i>Thuja occidentalis</i>	4-9cm	Good	

### 3.0 ENVIRONMENTAL VALUE AND ECOLOGICAL FUNCTION

TREE NO.	VALUE SCALE 1-10 (1 POOR-10 HEALTHY)	WOODLOT SIGNIFICANCE	SIGNIFICANCE AS A PART OF A GREENSPACE LINKAGE	CONDITION AND HEALTH (GOOD, FAIR, POOR, OR DEAD)	DISTINCT OR RARE TREES WITHIN PROPERTY BOUNDARY
1-78	7	The trees located within property do not form, or are apart of, a woodlot of significance, as evaluated in the Urban Natural Areas Environmental Evaluation Study (UNAEES).	The trees located within the property do not form part of a greenspace linkage, as evaluated in the Greenspace Master Plan.	56 Good 9 Fair 11 Poor 2 Dead	No distinct or rare trees within property



#### 4.0 TREE REMOVAL RATIONALE IN PHASE1+ PHASE2

TREE NO.	RATIONALE (Describe rationale for tree removal, how it will effect existing systems, surrounding landscape, etc.)
1; 2; 3; 6; 7; 8; 9; 10; 11; 12; 13; 46; 57; 61; 62; 63; 64; 65; 66; 67; 68; 69; 70; 71; 72; 73; 74; 75; 76	The trees on property listed and noted on TP-01 must be removed. The trees are either in poor health or in direct conflict with the new parking, new building and/or new landscaping, or will be harmed in the process due to construction access and work.

#### 5.0 TREE RETENTION RATIONALE AND MITIGATION MEASURES

TREE NO.	RATIONALE AND MITIGATION DESCRIPTION (Describe rational for tree retention, impact of development for remaining trees, grade changes, drainage pattern changes, effects of impervious surfaces and new buildings, changes to the water table, long-term survival promotion, etc.)
4; 5; 14; 15; 16; 17; 18; 19; 20; 21; 22; 23; 24; 25; 26; 27; 28; 29; 30; 31; 32; 33; 34; 35; 36; 37; 38; 39; 40; 41; 42; 43; 44; 45; 47; 48; 49; 50; 51; 52; 53; 54; 55; 56; 58; 59; 60; 77; 78	The remaining trees on property will remain. The completed buildings and landscape design will not have a significant impact on their ability to grow and remain healthy.





## 6.0 TREE PROTECTION MEASURES

Measure NO.	Tree Protection Measures
1	Do not place any material or equipment within the CRZ of the tree.
2	Do not attach any signs, notices, or posters to any tree.
3	Do not raise or lower the existing grade within the CRZ of a tree without direction and approval of the landscape architect. Landscape Architect to provide specification of grade changes.
4	Do not damage the root system, trunk or branches of any tree.
5	Ensure that exhaust fumes from all equipment are NOT directed towards the canopy of any tree.

Definition of CRZ:

\* D = diameter of trunk in centimeters  
 D x 10cm = Critical Root Zone (CRZ)

The critical root zone is established as being 10 centimeters from the trunk of a tree for every centimeter of trunk diameter. The trunk diameter is measured at a height of 1.2 metres for trees of 15 centimeters diameter and greater and at a height of 0.3 metres for trees of less than 15 centimeters diameter

## 7.0 SUGGESTED TREES FOR LANDSCAPE PLAN

NO. OF PROPOSED TREES	SUGGESTED TREE SPECIES	PERCENT OF TREE OFFSET TO THE SITE (%)
14	<i>Acer rubrum</i> <i>Amelanchier laevis</i> <i>Celtis occidentalis</i> <i>Malus 'Dolgo'</i> <i>Quercus rubra</i> (See TP-02 for locations)	48%





## 8.0 ADDITIONAL INFORMATION

OWNER/ APPLICANT	Kanata Muslim Association Community Centre SPS
NAME	Mehmood Shaikh
ADDRESS	832 March Road, P.O Box 76072, Kanata, Ontario, K2W 0C9
TEL. NO.	
PROFESSIONAL NAME	Lashley & Associates Landscape Architecture & Site Engineering
ADDRESS	Suite 202, 950 Gladstone Avenue, Ottawa ON K1Y 3E6
TEL. NO.	613-233-8579
CONTRACTOR NAME	TBD
MUNICIPAL ADDRESSES	351 Sandhill RD, ON K2K 1X7
LEGAL DESCRIPTIONS (LOT, BLOCK, PLAN)	Lot 10, Part 2; RP5R7561, PIN 045170006





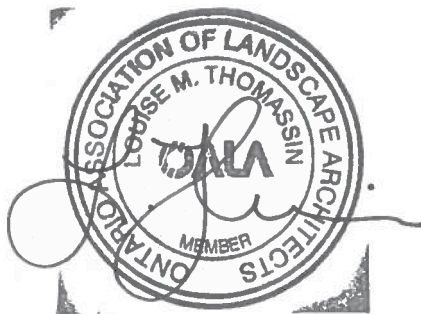
29 AUGUST 2017  
 Kanata Muslim Association  
 Community Centre SPS

CONFIRMATION OF ZONING DESIGNATIONS	Confirmed
---	-----------

PURPOSE OF REPORT	<p>To describe the existing tree coverage on the property and to identify the trees to be removed or protected for the construction of a new building addition, parking lots and landscape design.</p> <p>To identify new trees to be planted on site.</p>
-------------------	--

9.0 SCHEDULE OF PROPOSED WORKS	
START DATE	TBD
SUBSTANTIAL COMPLETION	TBD

Submitted by:



Louise Thomassin  
 Landscape Architect, Arborist