

**Legend**

- PROPOSED DECIDUOUS TREE
- PROPOSED CONIFEROUS TREES
- PROPOSED DECIDUOUS SHRUBS
- PROPOSED PERENNIAL BED PLANTING
- PROPERTY LINE
- T/SOD TOPSOIL AND SOD
- T/SEED TOPSOIL AND SEED
- PROPOSED TEMPORARY TREE PROTECTION FENCE
- PROPOSED RETAINING WALL WITH HANDRAIL
- PROPOSED CONCRETE WALKWAY

0	ISSUED FOR SITE PLAN APPROVAL	AMO	ILL	17.09.07	
Revision		By	Appd.	YY.MM.DD	
File Name:	160401305-LA.dwg	MS/AMO	ILL	17.09.01	
		Dwn.	Chkd.	Dgn.	YY.MM.DD

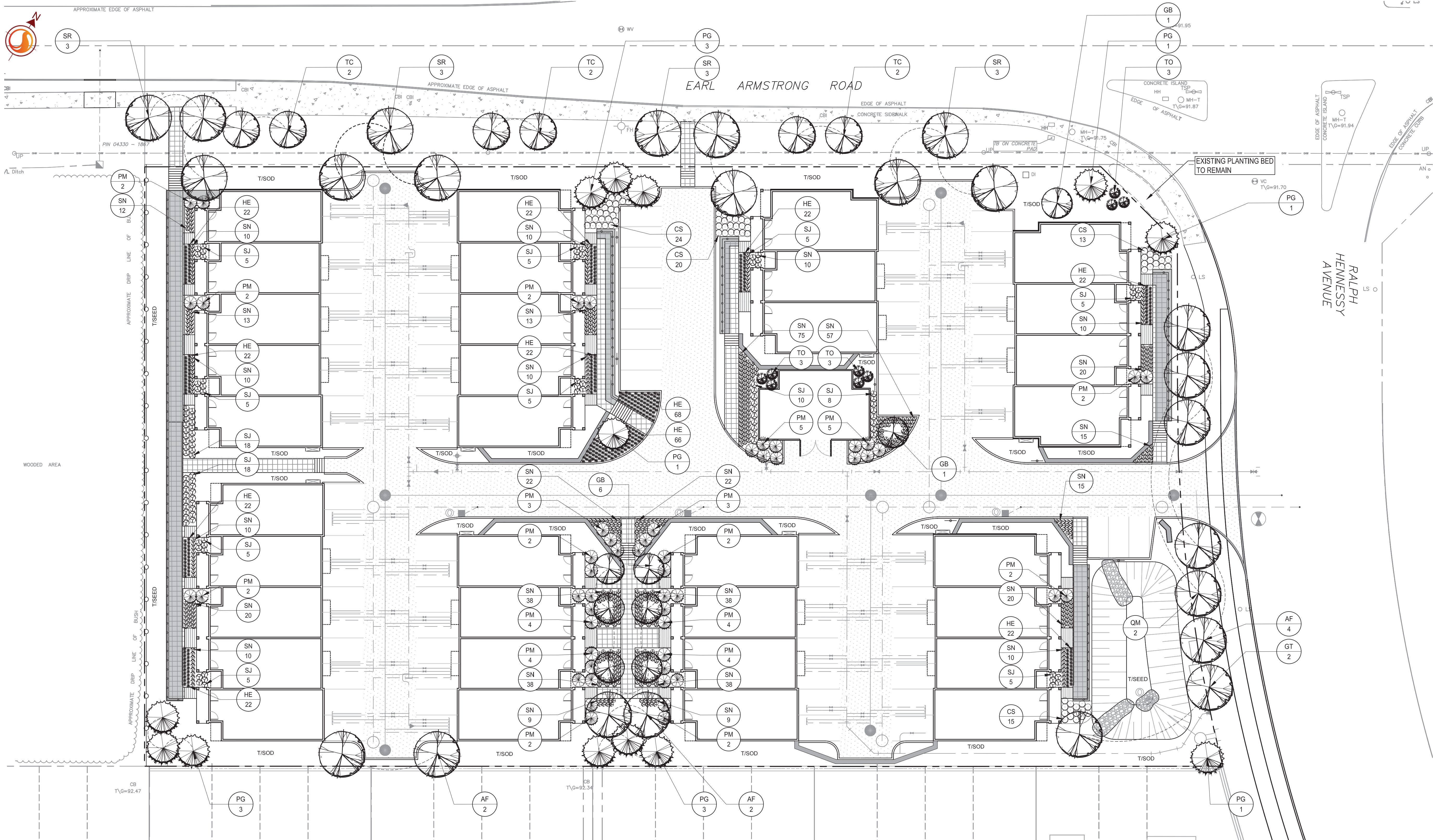


Client/Project  
**URBANDALE CORPORATION**

**RIVERSIDE SOUTH PHASE 8  
BLOCK 211  
OTTAWA, ON**

Title  
**LANDSCAPE PLAN**

Project No.	Scale
160401305	1:250
Drawing No.	Sheet
	Revision



**PLANT MATERIAL LIST**

SYM	QTY	BOTANICAL NAME	COMMON NAME	SIZE	REMARKS
DECIDUOUS TREES - REFER TO DETAIL 2/L300					
AF	8	<i>Acer x freemanii</i> 'Jeffersred'	Autumn Blaze Maple	60mm cal.	W.B.
GB	8	<i>Ginkgo biloba</i> 'Princeton Sentry'	Princeton Sentry Maidenhair Tree	50mm cal.	W.B.
GT	2	<i>Gleditsia triacanthos</i> var. <i>merris</i> 'Sunburst'	Sunburst Honeylocust	60mm cal.	W.B.
SR	12	<i>Syringa reticulata</i> 'Ivory Silk'	Tree Lilac	60mm cal.	W.B.
QM	2	<i>Quercus macrocarpa</i> 'Urban Pinnacle'	Urban Pinnacle Oak	60mm cal.	W.B.
TC	6	<i>Tilia cordata</i> 'Summer Sprite'	Summer Sprite Linden	45mm cal.	W.B.
CONIFEROUS TREES - REFER TO DETAIL 2/L300					
PG	13	<i>Picea glauca</i>	White Spruce	200cm ht.	W.B.
TO	9	<i>Thuja occidentalis</i> 'Emerald'	Robin Hill Serviceberry	200cm ht.	W.B.

**PLANT MATERIAL LIST**

SYM	QTY	BOTANICAL NAME	COMMON NAME	SIZE	REMARKS
DECIDUOUS SHRUBS - REFER TO DETAIL3/L300					
CS	72	<i>Cornus sericea</i> 'Farrow'	Arcic Fire Dogwood	50cm ht.	Potted; plant at 800mm o/c
SN	564	<i>Spiraea japonica</i> 'Nana'	Alpine Spiraea	40cm ht.	Potted; Plant at 500mm o/c
SJ	99	<i>Spiraea japonica</i> 'Flaming Mound'	Flaming Mound Spiraea	40cm ht	Potted; Plant at 800mm o/c
CONIFEROUS SHRUBS - REFER TO DETAIL 3/L300					
PM	52	<i>Pinus mugo</i> var. 'Pumilio'	Drawl Mountain Pine	40cm ht.	Potted, Plant at 1800mm o/c
PERENNIALS - REFER TO DETAIL 3/L300					
HE	332	<i>Heemerocallis</i> 'Ruby Stella'	Ruby Stella Daylily	1 gal.	Potted, Plant at 450mm o/c

**LANDSCAPE NOTES**

- EXISTING VEGETATED AREAS ON ADJACENT PROPERTIES SHALL REMAIN AND BE PROTECTED BEFORE, DURING, AND AFTER CONSTRUCTION.
- REFER TO 'LOT GRADING, DRAINAGE, SEDIMENT & EROSION CONTROL PLAN' FOR PROPOSED GRADING.
- REFER TO 'SITE SERVICING & UTILITY PLAN' FOR LOCATION AND DETAILS OF PROPOSED UNDERGROUND SERVICES.
- SOD SHALL BE KENTUCKY BLUEGRASS SOD INSTALLED OVER 135mm OF TOPSOIL. SOD SHALL BE INSTALLED THROUGHOUT WITHIN LIMIT OF WORK AND IN ALL DISTURBED AREAS OUTSIDE THE LIMIT OF WORK EXCEPT WHERE INDICATED. SOD SHALL BE INSTALLED AS PER OPSS 803.
- SEED MIXTURE SHALL BE A LOW MAINTENANCE LAWN MIXTURE #7104 BY OSC SEEDS OR APPROVED EQUIVALENT. SEEDING SHALL BE INSTALLED MECHANICALLY WITH MULCH OVER 150mm OF TOPSOIL. SEE SHALL BE INSTALLED AS PER OPSS 804.
- CONTRACTOR TO LOCATE AND STAKE ALL UTILITIES PRIOR TO ANY WORK ON THE SITE. DO NOT PLANT DIRECTLY ABOVE UNDERGROUND UTILITIES. REPORT ANY DISCREPANCIES TO THE LANDSCAPE ARCHITECT FOR DIRECTION.
- MAINTAIN A MINIMUM DISTANCE OF 2.0m FROM ALL UNDERGROUND UTILITIES.
- MAINTAIN A MINIMUM DISTANCE OF 1.5m FROM BACK OF ROADWAY SIDEWALK.
- NO TREES SHALL BE PLANTED UNDER OVERHEAD WIRES.
- THE LANDSCAPE ARCHITECT MAY ADJUST THE LOCATION OF TREES PRIOR TO PLANTING TO MINIMIZE CONFLICTS WITH UTILITIES, DRIVEWAYS AND INTERSECTION VISIBILITY.
- CONTRACTOR SHALL SUPPLY ALL MATERIALS IN QUANTITIES SUFFICIENT TO COMPLETE WORK SHOWN ON THESE DRAWINGS. ANY DISCREPANCIES SHALL BE REPORTED TO THE LANDSCAPE ARCHITECT FOR DIRECTION.
- DO NOT MAKE SUBSTITUTIONS OF MATERIALS, PRODUCTS OR QUANTITIES WITHOUT PRIOR WRITTEN PERMISSION OF THE LANDSCAPE ARCHITECT.
- THE CONTRACTOR TO MAKE GOOD TO THE SATISFACTION OF THE LANDSCAPE ARCHITECT ANY AREAS DAMAGED BY THE WORK.
- UPON THE COMPLETION OF WORK EACH DAY, REMOVE ALL DEBRIS, GARBAGE AND SURPLUS MATERIALS FROM THE SITE. KEEP THE SITE CLEAN AND USEABLE AT ALL TIMES.
- ALL WORKMANSHIP AND MATERIALS (INCLUDING PLANTS) TO BE GUARANTEED FOR ONE FULL YEAR FOLLOWING FINAL ACCEPTANCE OF THE PROJECT.
- THE CONTRACTOR SHALL REMOVE ALL T-BAR AND WOODEN TREE STAKES PRIOR TO ASSUMPTION BY THE OWNER.
- AT THE TIME OF INSPECTION FOR ACCEPTANCE ALL TREE PITS SHALL BE CULTIVATED, FREE OR WEEDS, LEAVES, BROKEN BRANCHES AND DEBRIS.



PLANTING NOTES

- THE DETAILS ON THIS SHEET DO NOT REPRESENT ANY PARTICULAR SPECIES.
- TREES AND SHRUBS AS INDICATED IN THE DETAILS REPRESENT BOTH CONIFEROUS AND DECIDUOUS SPECIES.
- MATERIAL PLANTED IN GROUP SHALL BE SET IN CONTINUOUS PLANTING BEDS.
- CENTRE LINE OF SHRUBS SHALL NOT BE CLOSER THAN 2.4m FROM BUILDING FACE TO PROTECT BUILDING FOOTINGS AND INSULATION.
- PRUNING - TO SUIT SPECIES - PRUNE BRANCHES BY 1/3 TO REMOVE DAMAGED OR OBJECTIONABLE BRANCHES FOLLOWING PROPER HORTICULTURAL PRACTICE. DO NOT PRUNE LEADERS.
- FIRMLY COMPACT BACKFILLED PLANTING MIXTURE TO ELIMINATE AIR POCKETS OR PREVENT SETTLEMENT.
- PLANTING MATERIAL QUALITY STANDARDS:
  - ALL PLANT MATERIALS TO CONFORM TO THE CANADIAN NURSERY LANDSCAPE ASSOCIATION FOR VARIETY, SIZE AND CONDITION.
  - PLANT MATERIAL COLLECTED FROM WILD SOURCES WILL NOT BE ACCEPTED.
  - LANDSCAPE ARCHITECT RESERVES THE RIGHT TO REFUSE ACCEPTANCE OF ANY PLANT DISPLAYING POOR GROWTH HABITS, INJURY OR DISEASE.
  - ANY PLANTS THAT DO NOT CONFORM TO THE ABOVE STANDARDS WILL BE PROMPTLY REMOVED FROM THE SITE BY THE CONTRACTOR AND REPLACED WITH MATERIAL OF ACCEPTABLE QUALITY AT NO ADDITIONAL COST TO THE PROJECT.

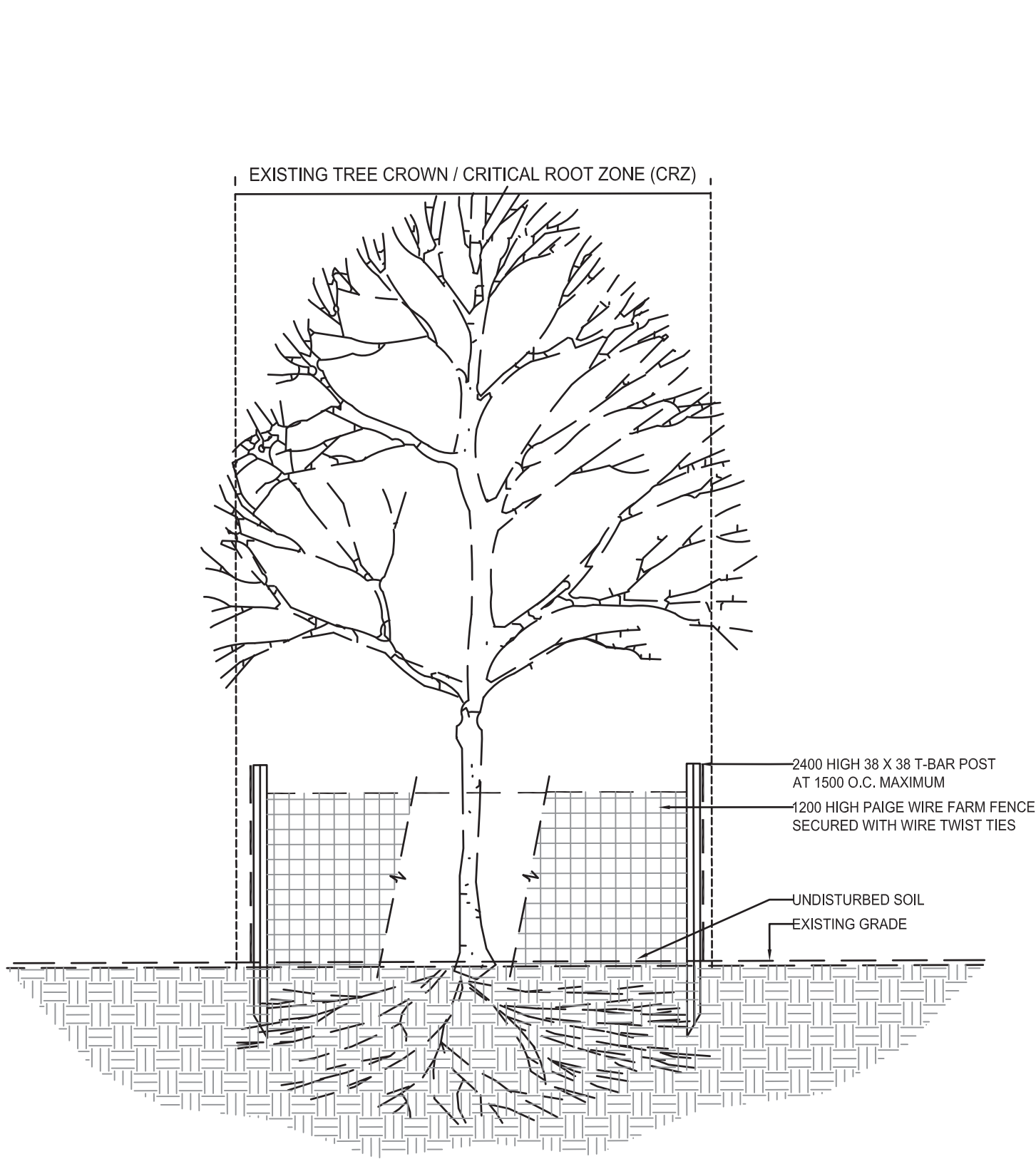


Stantec Consulting Ltd.  
400 - 1331 Clyde Avenue  
Ottawa ON  
Tel. 613.722.4420  
www.stantec.com

Copyright Reserved

The Contractor shall verify and be responsible for all dimensions. DO NOT scale the drawing - any errors or omissions shall be reported to Stantec without delay.  
The Copyrights to all designs and drawings are the property of Stantec. Reproduction or use for any purpose other than that authorized by Stantec is forbidden.

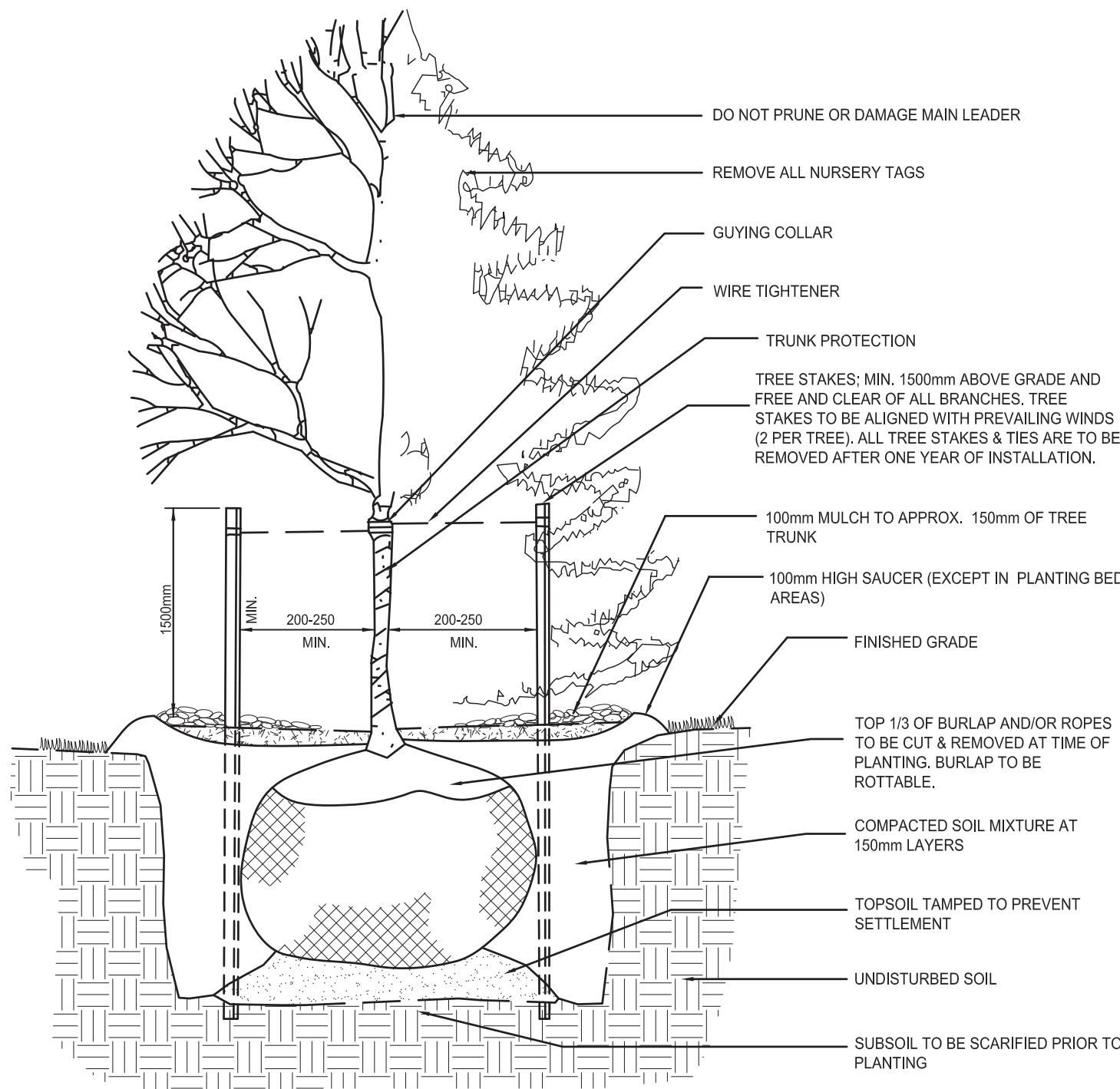
Legend



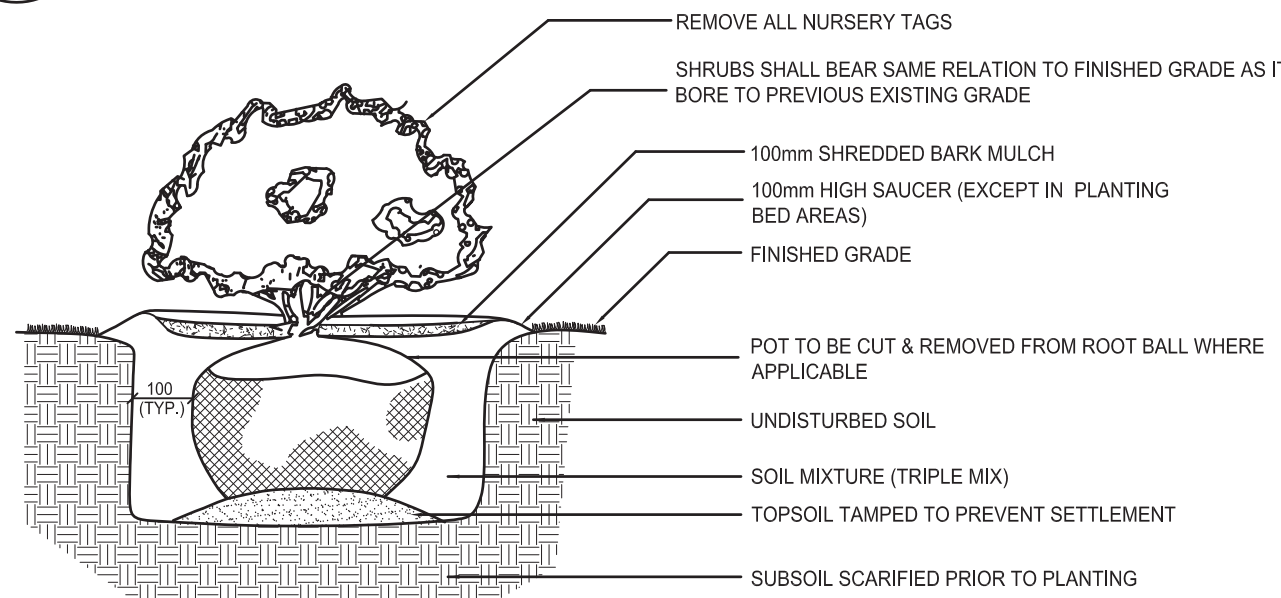
NOTES:

- THE AREA WITHIN CRITICAL ROOT ZONE OF ALL EXISTING TREES TO BE RETAINED SHALL BE PROPERLY PROTECTED WITH TEMPORARY FENCING AS PER THE APPROVED LANDSCAPE INVENTORY AND PRESERVATION PLAN.
- GROUPS OF TREES TO BE PROTECTED SHALL BE TREATED IN A LIKE MANNER WITH FENCING AROUND THE ENTIRE STAND(S).
- THE AREA WITHIN THE PROTECTED FENCING SHALL REMAIN UNDISTURBED AND SHALL NOT BE USED FOR THE STORAGE OF BUILDING MATERIALS OR EQUIPMENT. REMOVE ALL DEBRIS.
- PRUNE BRANCHES TO REMOVE DAMAGED OR OBJECTIONABLE BRANCHES. DO NOT PRUNE LEADERS.
- TREE PROTECTION SHALL REMAIN UNTIL SUBSTANTIAL PERFORMANCE OF THE PROJECT.
- IF CUTTING OF ROOTS OR CHANGING OF GRADES AROUND EXISTING TREES IS CALLED FOR, FOLLOW APPROPRIATE DETAILS AS DIRECTED BY LANDSCAPE ARCHITECT.
- IF TREES ARE BEING AFFECTED BY CONSTRUCTION, A WATER AND FERTILIZING PROGRAM WILL BE REQUIRED TO THE SATISFACTION OF THE CITY.

1 TEMPORARY TREE PROTECTION FENCE  
N.T.S.



2 DECIDUOUS TREE PLANTING DETAIL  
N.T.S.



3 SHRUB AND PERENNIAL PLANTING DETAIL  
N.T.S.

0	ISSUED FOR SITE PLAN APPROVAL	AMO	ILL 17.09.07
Revision		By	Appd. YY.MM.DD
File Name:	160401305-LA.dwg	MS/AMO	ILL 17.09.01
		Dwn.	Chkd. Dsgn. YY.MM.DD

Permit-Seal



Client/Project  
URBANDALE CORPORATION

RIVERSIDE SOUTH PHASE 8  
BLOCK 211  
OTTAWA, ON

Title  
LANDSCAPE DETAILS

Project No.	Scale
160401305	VARIES
Drawing No.	Sheet
	Revision

L300 2 of 2 0