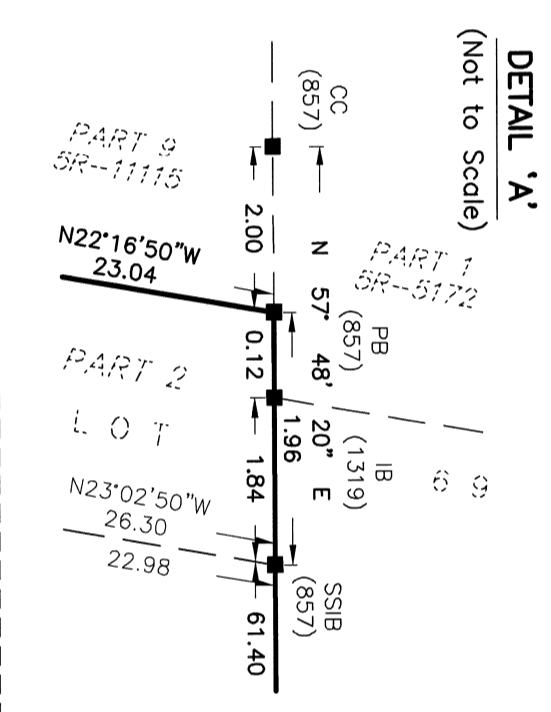
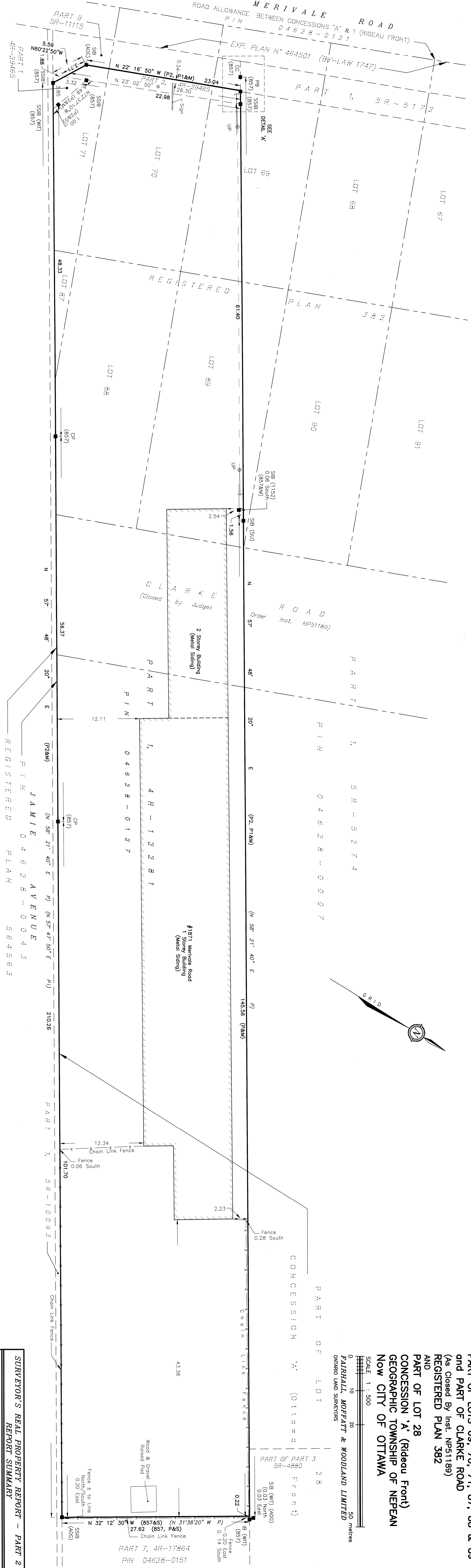


METRIC
DISTANCES SHOWN ON THIS PLAN ARE IN METRES AND
CAN BE CONVERTED TO FEET BY DIVIDING BY 0.3048



SURVEYOR'S REAL PROPERTY REPORT - PART 1
PLAN OF
PART OF LOTS 69, 70, 71, 87, 88 & 89
AND PART OF CLARKE ROAD
(As Closed by Inst. NP51189)
REGISTERED PLAN 382
AND
PART OF LOT 28
CONCESSION 'A' (Rideau Front)
GEOGRAPHIC TOWNSHIP OF NEPEAN
Now CITY OF OTTAWA

SCALE 1 : 500
0 10 20 30 40 50 metres
FAIRHALL, MOFFATT & WOODLAND LIMITED
ONTARIO LAND SURVEYORS

**SURVEYOR'S REAL PROPERTY REPORT - PART 2
REPORT SUMMARY**

DESCRIPTION OF LAND
PART OF LOTS 69, 70, 71, 87, 88 & 89 AND PART OF CLARKE ROAD (CLOSED BY JUDGES ORDER, INST. NP51189), REGISTERED PLAN N. 382 AND PART OF LOT 28, CONCESSION 'A' (RIDEAU FRONT), GEOGRAPHIC TOWNSHIP OF NEPEAN, NOW CITY OF OTTAWA, DESIGNATED AS PART 1, 4R-12281 AS IN ALL OF PIN 04628-0127.
REGISTERED EASEMENTS
NONE REGISTERED.

REMARK
PERIMETER FENCES ARE AS SHOWN ON PART 1, THE PLAN.

ZONING
COMPLIANCE WITH ZONING, LAND USE, ENVIRONMENTAL AND BUILDING REGULATIONS NOT CERTIFIED BY THIS REPORT.

BENSON GROUP INC.
THIS REPORT WAS PREPARED FOR THE UNDERSIGNED ACCEPTS NO RESPONSIBILITY FOR USE BY OTHER PARTIES.

SURVEYOR'S CERTIFICATE
I CERTIFY THAT:
1. THIS SURVEY AND PLAN ARE CORRECT AND IN ACCORDANCE WITH THE SURVEY ACT, THE REGULATIONS MADE UNDER THEM AND THE REGULATIONS MADE BY THE SURVEY COMMISSION ON JULY 25, 2017.
2. THE SURVEY WAS COMPLETED ON JULY 25, 2017.
DATE: 2017/09/09
GAIL H. GILBERT
ONTARIO LAND SURVEYOR

ASSOCIATION OF ONTARIO LAND SURVEYORS
PLAN SUBMISSION FORM
2024691

**Fairhall
Moffatt &
Woodland**
LIMITED
Ontario Land Surveyors
Strategic and Land Information Services
235 TERRELL BLVD. SUITE 100, OTTAWA, ONT. K2K 2B3
TEL: (613) 591-2500 FAX: (613) 591-1499
WWW.FHW.COM

REFERENCE NO.
155 (D) - A (RF) NP
E 365705, N 5021820

JOB NO.
X 2 8 5 0 0

NOTES
BEARINGS ARE GRID, DERIVED FROM NCC HORIZONTAL CONTROL. MONUMENTS 019710637 (N 5022465.812, E 365416.840) AND 019861625 (N 5022141.837, E 363270.732) AND ARE REFERRED TO THE CENTRAL MERIDIAN, 76°30' W LONGITUDE MIN ZONE 9. (NAD83 ORIGINAL).

LEGEND
□ SURVEY MONUMENT SET (1192) - J. E. KIH, O.L.S.
■ SURVEY MONUMENT FOUND (1319) - W. J. WEBSTER, O.L.S.
SIB - ANKINS, O'SULLIVAN, VOLLEBERG SURVEYING LTD., O.L.S.
SSIB - SHORT STANDARD IRON BAR (SU) - SOURCE UNKNOWN
IB - NATIONAL CAPITAL COMMISSION
PB - WITNESSES
CC - CUT CROSS
CP - CONCRETE PIN
(P) - PLAN 4R-12281
(P1) - PLAN 5R-11115
(P2) - PLAN 4R-29465
(S) - SET
(M) - MEASURED
(857) - FAIRHALL, MOFFATT & WOODLAND LIMITED, O.L.S. (REF. 130 - A (RF) NP & 155 - A (RF) NP)

© COPYRIGHT 2013. REPRODUCTION, ALTERATION OR DISTRIBUTION OF THIS PLAN WITHOUT THE WRITTEN CONSENT OF FAIRHALL, MOFFATT & WOODLAND LIMITED IS PROHIBITED.