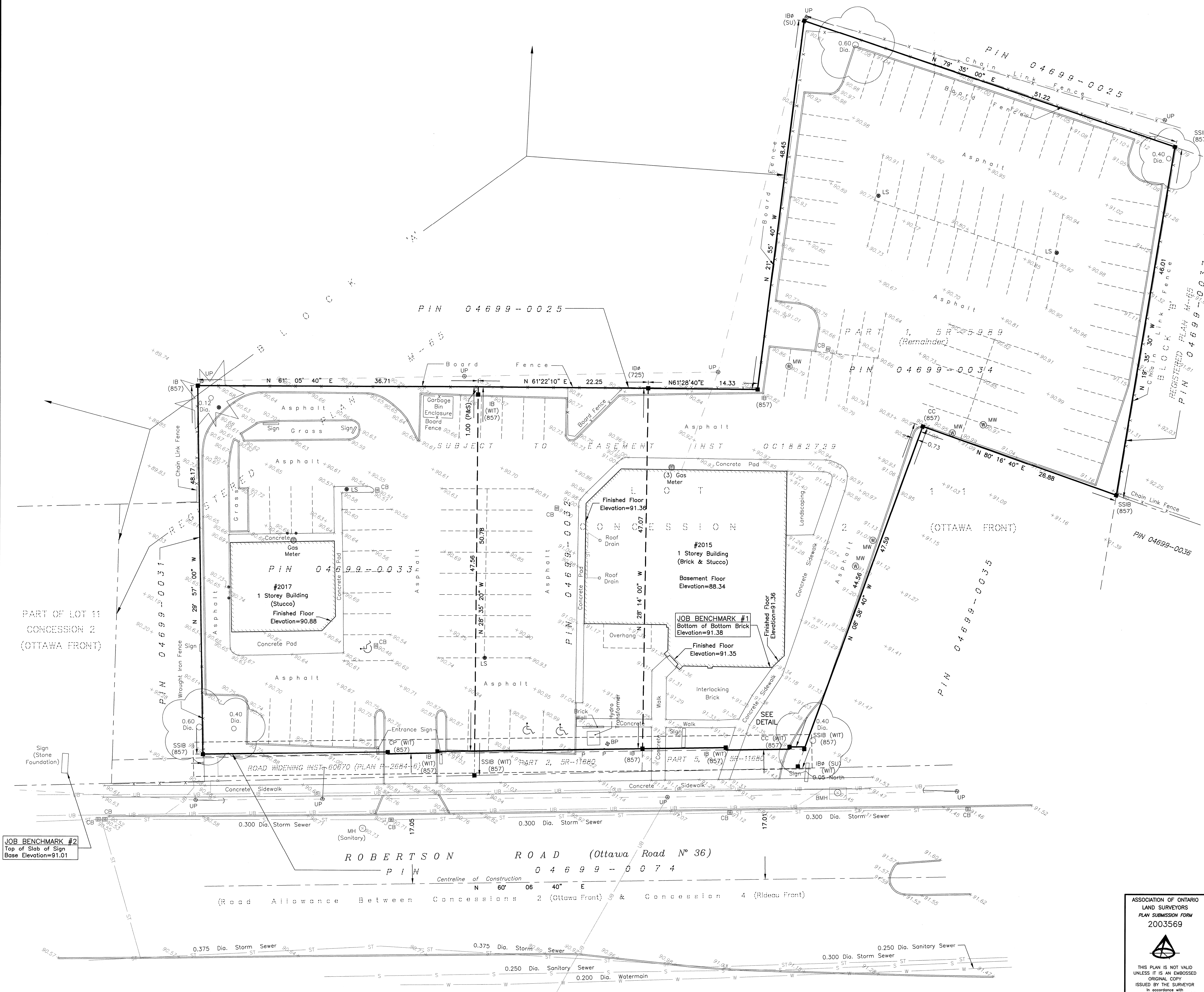
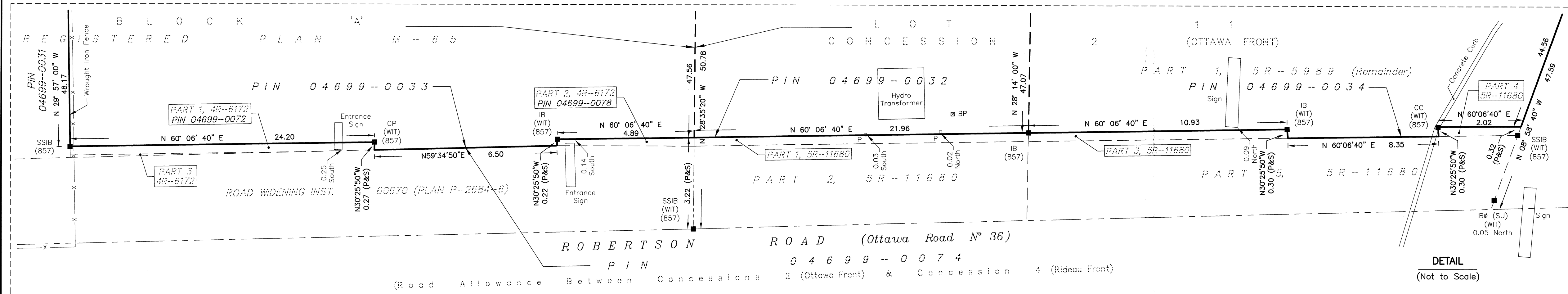


METRIC
DISTANCES AND ELEVATIONS SHOWN ON THIS PLAN ARE IN METRES
AND CAN BE CONVERTED TO FEET BY DIVIDING BY 0.3048



TOPOGRAPHIC SURVEY OF
PART OF LOT 11
CONCESSION 2 (OTTAWA FRONT)
GEOGRAPHIC TOWNSHIP OF NEPEAN
AND
PART OF BLOCK 'A'
REGISTERED PLAN M-65
Now CITY OF OTTAWA

SCALE 1 : 250
0 5 10 20 25 metres

FAIRHALL, MOFFATT & WOODLAND LIMITED
ONTARIO LAND SURVEYORS

- NOTES**
- BEARINGS ARE GRID, DERIVED FROM NCC HORIZONTAL CONTROL MONUMENTS 019680021 (N 5020786.503, E 357684.095) AND 019680358 (N 5020505.053, E 357076.126) REFERRED TO THE CENTRAL MERIDIAN, 76°30'W LONGITUDE MTM ZONE 9, NAD83 ORIGINAL.
 - DISTANCES ARE GROUND AND CAN BE CONVERTED TO GRID BY MULTIPLYING BY THE COMBINED SCALE FACTOR 0.999925.
 - BOUNDARY & SURVEY MONUMENTS SHOWN PER DRAFT REFERENCE PLAN BY FAIRHALL, MOFFATT & WOODLAND LIMITED, O.L.S. DATED APRIL 24, 2017 (REF. 228 (a)-2 (OF) NP).

LEGEND

■ - SURVEY MONUMENT FOUND	BMH ○ - BELL MANHOLE
SIB - STANDARD IRON BAR	LS ● - LAMP STANDARD
SSIB - SHORT STANDARD IRON BAR	UP ⊙ - UTILITY POLE
IB - IRON BAR	BP ⊗ - BELL PEDESTAL
CC - CUT CROSS	MW ⊙ - MONITORING WELL
CP - CONCRETE PIN	P ⊙ - STEEL POST
⊙ - ROUND	⊙ - GUY WIRE AND ANCHOR
(P) - SEE NOTE 3 ABOVE	⊙ - BOLLARD
(S) - SET	⊙ - SIGN
(M) - MEASURED	⊙ - CONIFEROUS TREE
(725) - R. W. ARNETT, O.L.S.	⊙ - DECIDUOUS TREE
(857) - FAIRHALL, MOFFATT & WOODLAND LIMITED, O.L.S.	⊙ - HANDICAP
(NCC) - NATIONAL CAPITAL COMMISSION	⊙ - WATERMAIN
(WIT) - WITNESS	⊙ - OVERHEAD UTILITY WIRES
PIN - PROPERTY IDENTIFIER NUMBER	⊙ - UNDERGROUND BELL
CB ⊙ - CATCH BASIN	⊙ - GAS MAIN
MH ○ - MANHOLE	⊙ - STORM SEWER
	⊙ - ROGERS
	⊙ - CURB

SURVEYOR'S CERTIFICATE

I CERTIFY THAT:
1. THIS SURVEY AND PLAN ARE CORRECT AND IN ACCORDANCE WITH THE SURVEYS ACT, THE SURVEYORS ACT, THE LAND TITLES ACT AND THE REGULATIONS MADE UNDER THEM.
2. THE SURVEY WAS COMPLETED ON MAY 03, 2017.

2017/05/03
DATE
JOHN H. GUTRI
ONTARIO LAND SURVEYOR

ASSOCIATION OF ONTARIO
LAND SURVEYORS
PLAN SUBMISSION FORM
2003569

**Fairhall
Moffatt &
Woodland**
LIMITED
SURVEYING AND LAND INFORMATION SERVICES

100-800 TERRY FOX DRIVE, KANATA, ONTARIO K2L 4B6
TEL: (613) 591-2500 FAX: (613) 591-1495
www.fmw.on.ca

OTTAWA

JOB No.
W 4 2 7 0 0
E 357486, N 5020749
REFERENCE No.
228 (b) - 2 (OF) NP
S:\085\W4270\DWG\2017-05-03
TP427W-2017.DWG (nj)