

EXISTING TREE LIST

KEY	QTY.	BOTANICAL NAME	COMMON NAME	SIZE	CONDITION	REMARKS
TREES						
AN	1	Acer negundo	Manitoba Maple	100-400mm ø	GOOD	See Plan
AP	2	Acer platanoides	Norway Maple	400mm ø	GOOD	See Plan
JC	1	Juniperus chinensis 'Mountbatten'	Mountbatten Juniper	150mm ø	GOOD	See Plan
JN	1	Juglans nigra	Black Walnut	100-200mm ø	GOOD	See Plan
TO	1	Thuja occidentalis	White Cedar	100-250mm ø	FAIR-GOOD	See Plan
UA	1	Ulmus americana	White Elm	100-600mm ø	DEAD-GOOD	See Plan
UP	1	Ulmus pumila	Siberian Elm	600mm ø	GOOD	See Plan

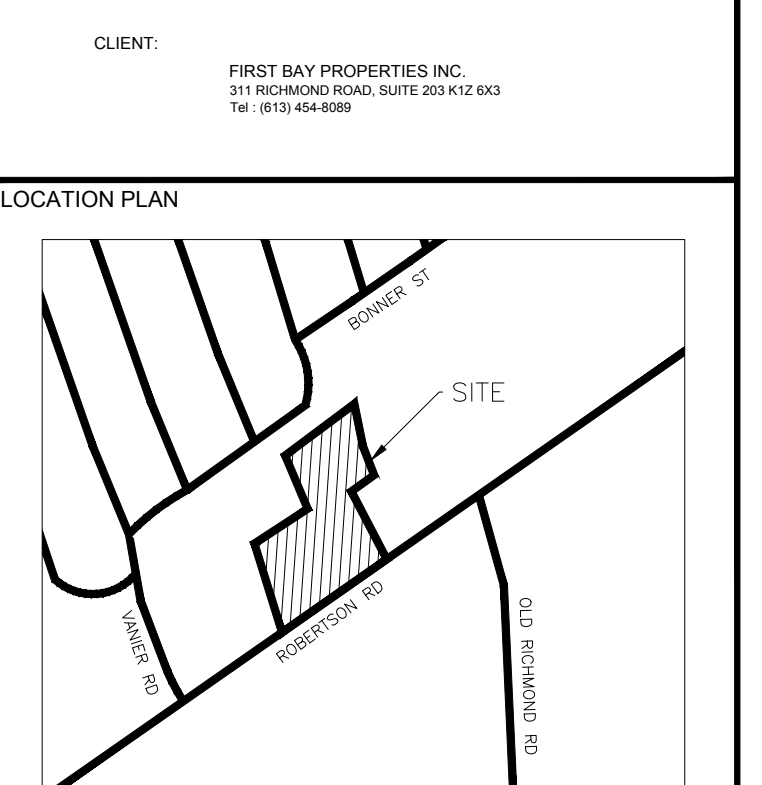
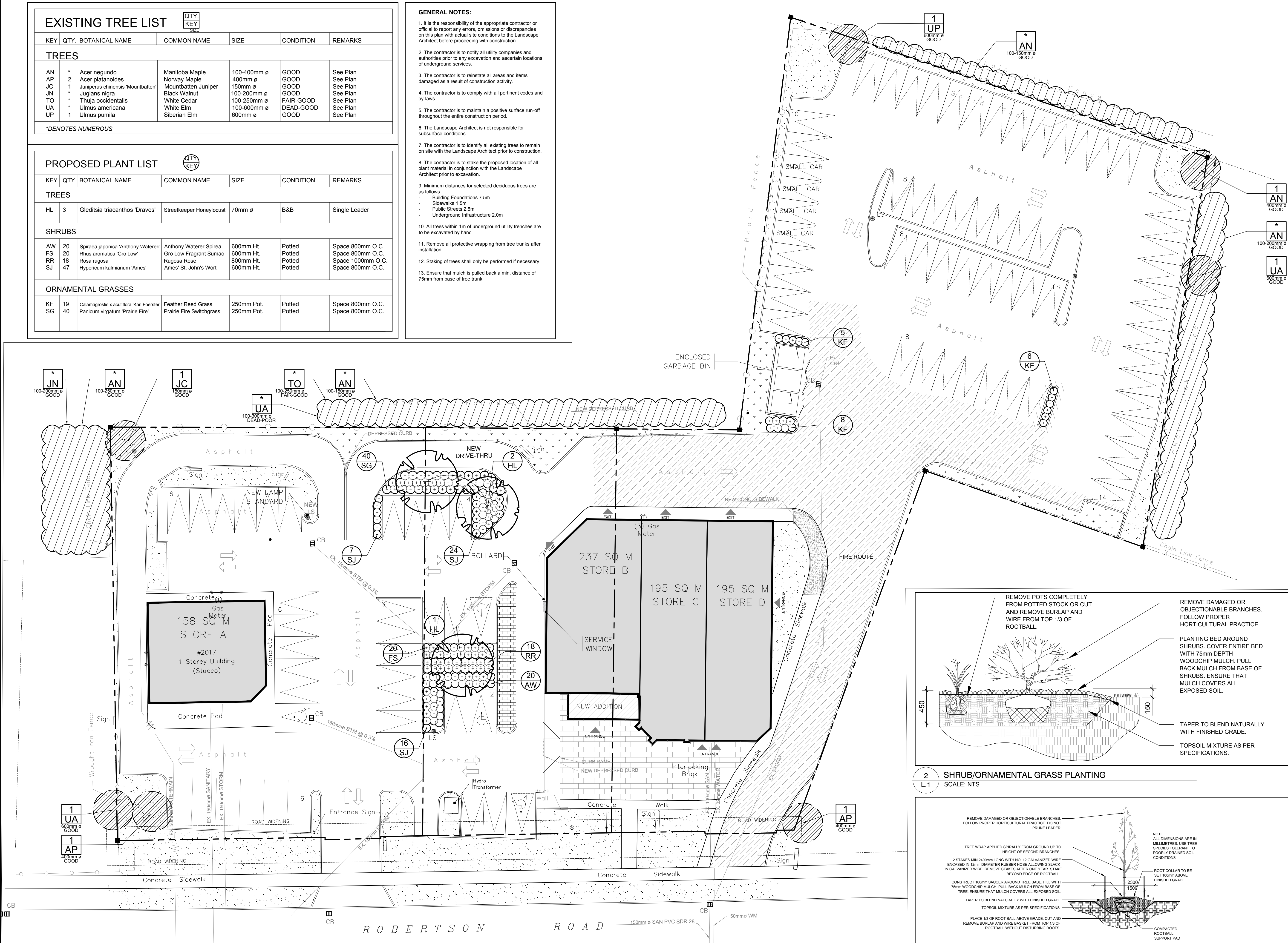
*DENOTES NUMEROUS

PROPOSED PLANT LIST

KEY	QTY.	BOTANICAL NAME	COMMON NAME	SIZE	CONDITION	REMARKS
TREES						
HL	3	Gleditsia triacanthos 'Draves'	Streetkeeper Honeylocust	70mm ø	B&B	Single Leader
SHRUBS						
AW	20	Spiraea japonica 'Anthony Waterer'	Anthony Waterer Spirea	600mm Ht.	Potted	Space 800mm O.C.
FS	20	Rhus aromatica 'Gro Low'	Gro Low Fragrant Sumac	600mm Ht.	Potted	Space 800mm O.C.
RR	18	Rosa rugosa	Rugosa Rose	800mm Ht.	Potted	Space 1000mm O.C.
SJ	47	Hypericum kalmianum 'Ames'	Ames' St. John's Wort	600mm Ht.	Potted	Space 800mm O.C.
ORNAMENTAL GRASSES						
KF	19	Calamagrostis x acutiflora 'Karl Foerster'	Feather Reed Grass	250mm Pot.	Potted	Space 800mm O.C.
SG	40	Panicum virgatum 'Prairie Fire'	Prairie Fire Switchgrass	250mm Pot.	Potted	Space 800mm O.C.

GENERAL NOTES:

- It is the responsibility of the appropriate contractor or official to report any errors, omissions or discrepancies on this plan with actual site conditions to the Landscape Architect before proceeding with construction.
- The contractor is to notify all utility companies and authorities prior to any excavation and ascertain locations of underground services.
- The contractor is to reinstate all areas and items damaged as a result of construction activity.
- The contractor is to comply with all pertinent codes and by-laws.
- The contractor is to maintain a positive surface run-off throughout the entire construction period.
- The Landscape Architect is not responsible for subsurface conditions.
- The contractor is to identify all existing trees to remain on site with the Landscape Architect prior to construction.
- The contractor is to stake the proposed location of all plant material in conjunction with the Landscape Architect prior to excavation.
- Minimum distances for selected deciduous trees are as follows:
 - Building Foundations 7.5m
 - Sidewalks 1.5m
 - Public Streets 2.5m
 - Underground Infrastructure 2.0m
- All trees within 1m of underground utility trenches are to be excavated by hand.
- Remove all protective wrapping from tree trunks after installation.
- Staking of trees shall only be performed if necessary.
- Ensure that mulch is pulled back a min. distance of 75mm from base of tree trunk.



CLIENT: FIRST BAY PROPERTIES INC.
311 RICHMOND ROAD, SUITE 203 K1V 6K3
Tel: (613) 844-9288

CONSULTANTS

ARCHITECTS: WOODMAN ARCHITECT & ASSOCIATES LTD.
2514 BEECHWOOD AVENUE, OTTAWA, ON K1J 6L9
Tel: (613) 228-8848

CIVIL ENGINEERS: WSP
2511 Queenstown Drive, Suite 300, Ottawa, ON K2B 8K2
Tel: (613) 660-3786

LEGEND

	EXISTING TREE TO REMAIN
	GROUP OF EXISTING TREES TO REMAIN
	EXISTING LANDSCAPE AREA TO REMAIN
	PROPOSED DECIDUOUS TREE
	PROPOSED SOD
	PROPOSED SHRUBS/PERENNIALS
	PROPOSED PAVERS

No.	Issue	Date	By	DR	CK
1	ISSUED FOR DISCUSSION AND REVIEW	08/03/2017	ML	JL	

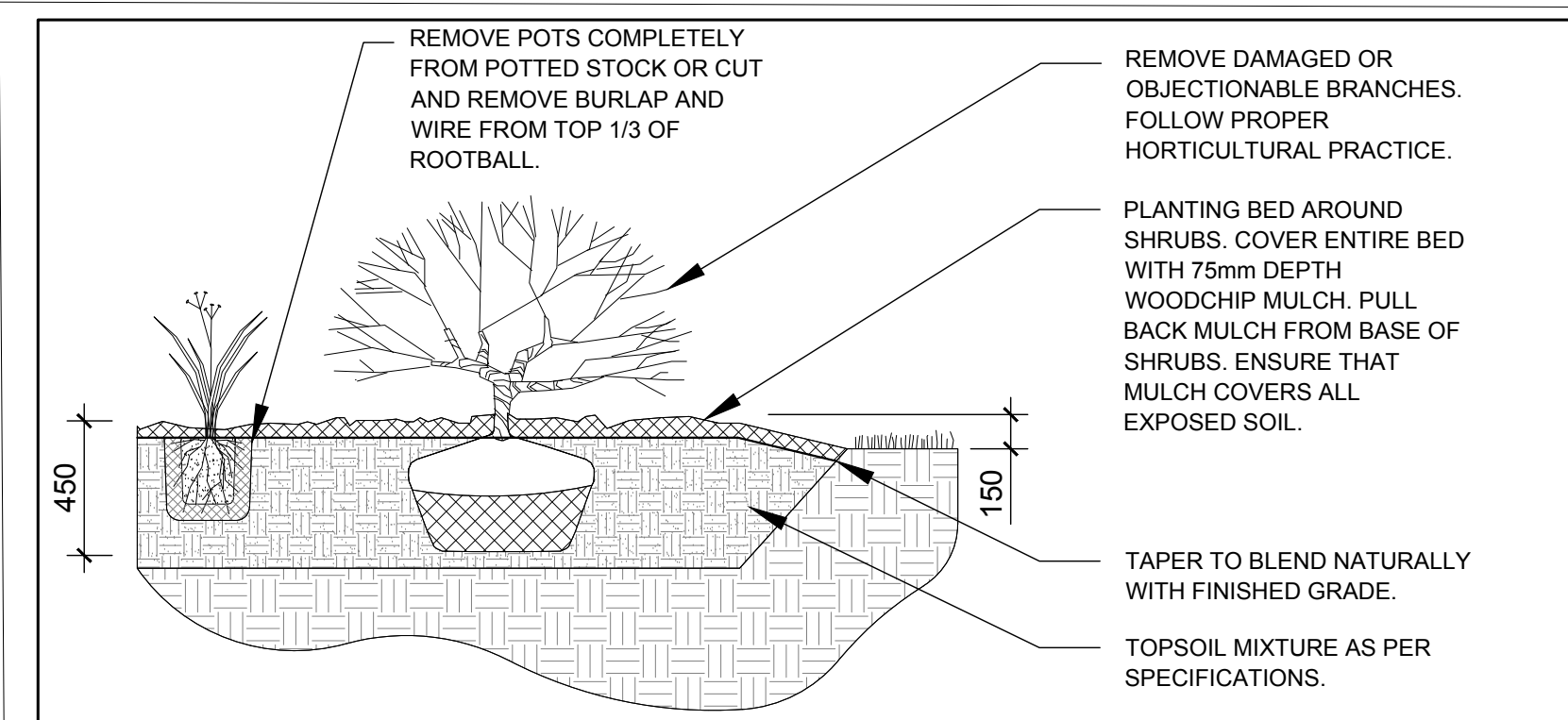
JAMES B. LENNOX & ASSOCIATES INC.
LANDSCAPE ARCHITECTS
3332 CARLING AVE. OTTAWA, ONTARIO K2H 5A8
Tel: (613) 722-5168 Fax: (866) 343-3942

PROJECT: 2015 ROBERTSON ROAD
OTTAWA, ON

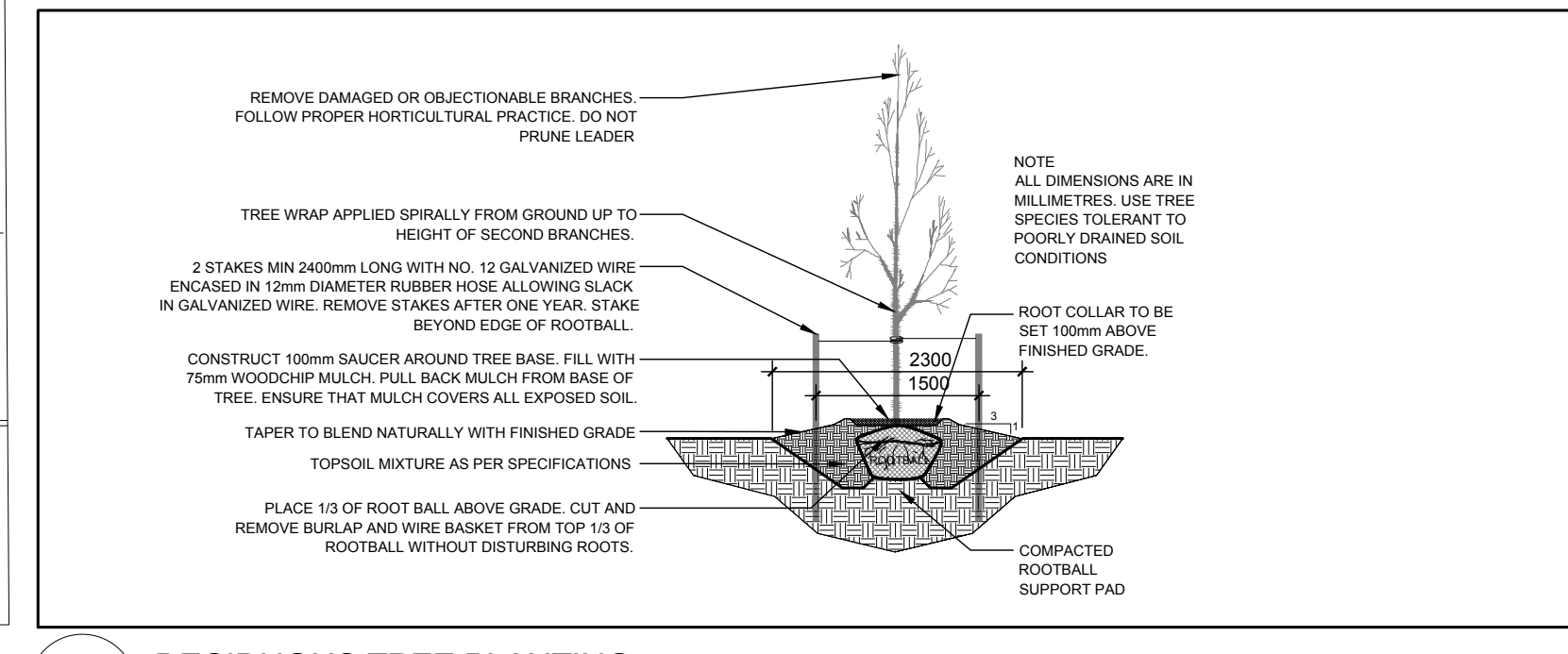
DRAWING: TREE CONSERVATION REPORT & LANDSCAPE PLAN

SCALE: AS SHOWN
START DATE: AUGUST 2017
PROJECT NO.:

DRAWING NO. **L.1**
PLOT SIZE ARCH-D



2 SHRUB/ORNAMENTAL GRASS PLANTING
SCALE: NTS



3 DECIDUOUS TREE PLANTING
SCALE: NTS

1 TREE CONSERVATION REPORT & LANDSCAPE PLAN
SCALE: 1:250