

**NOTES: EROSION AND SEDIMENT CONTROL**

- PRIOR TO START OF CONSTRUCTION INSTALL FILTER SOCK AT ALL ONSITE EXISTING CATCH BASINS.
- DURING CONSTRUCTION MINIMIZE THE EXTENT OF DISTURBED AREAS AND THE DURATION OF EXPOSURE AND IMPACTS TO EXISTING GRADING.
- PROVIDE TEMPORARY COVER SUCH AS SEEDING OR MULCHING IF DISTURBED AREA WILL NOT BE REHABILITATED WITHIN 30 DAYS.
- DRAWING TO BE REVIEWED AND REVISED AS REQUIRED DURING CONSTRUCTION.
- CONTROL WIND-BLOWN DUST OFF SITE BY SEEDING TOPSOIL PILES AND OTHER AREAS TEMPORARILY (PROVIDE WATERING AS REQUIRED AND TO THE SATISFACTION OF THE ENGINEER).
- NO ALTERNATE METHODS OF EROSION PROTECTION SHALL BE PERMITTED UNLESS APPROVED BY THE FIELD ENGINEER.
- CITY ROADWAY AND SIDEWALK TO BE CLEANED OF ALL SEDIMENT FROM VEHICULAR TRACKING AS REQUIRED.
- TAKE ALL NECESSARY STEPS TO PREVENT BUILDING MATERIAL, CONSTRUCTION DEBRIS OR WASTE BEING SPILLED OR TRACKED ONTO ADJUTING PROPERTIES OR PUBLIC STREETS DURING CONSTRUCTION AND PROCEED IMMEDIATELY TO CLEAN UP ANY AREAS SO AFFECTED.
- ALL EROSION CONTROL STRUCTURE TO REMAIN IN PLACE UNTIL ALL DISTURBED GROUND SURFACES HAVE BEEN STABILIZED EITHER BY PAVING OR RESTORATION OF VEGETATIVE GROUND COVER.
- THE CONTRACTOR SHALL IMPLEMENT BEST MANAGEMENT PRACTICES, TO PROVIDE FOR PROTECTION OF THE AREA DRAINAGE SYSTEM AND THE RECEIVING WATERCOURSE, DURING CONSTRUCTION ACTIVITIES. THE CONTRACTOR ACKNOWLEDGES THAT FAILURE TO IMPLEMENT APPROPRIATE EROSION AND SEDIMENT CONTROL MEASURES MAY BE SUBJECT TO PENALTIES IMPOSED BY ANY APPLICABLE REGULATORY AGENCY.

**NOTES: GENERAL**

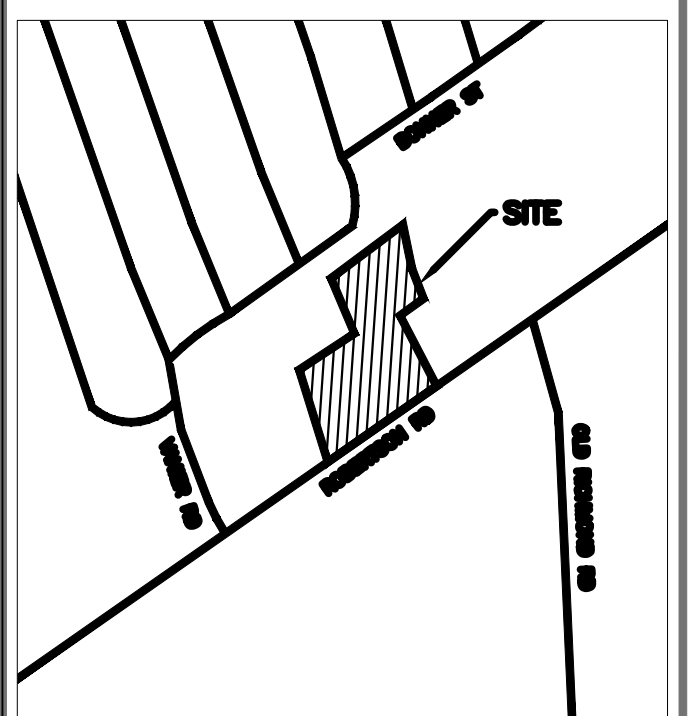
- ALL SERVICES, MATERIALS, CONSTRUCTION METHODS AND INSTALLATIONS SHALL BE IN ACCORDANCE WITH THE LATEST STANDARDS AND REGULATIONS OF THE CITY OF OTTAWA STANDARD SPECIFICATIONS AND DRAWINGS, ONTARIO PROVINCIAL SPECIFICATION STANDARD SPECIFICATION (OPSS) AND ONTARIO PROVINCIAL STANDARD DRAWINGS (OPSD), UNLESS OTHERWISE SPECIFIED, TO THE SATISFACTION OF THE CITY AND THE CONSULTANT.
- THE POSITION OF EXISTING POLE LINES, CONDUITS, WATERMANS, SEWERS AND OTHER UNDERGROUND UTILITIES, STRUCTURES AND APPURTENANCES IS NOT NECESSARILY SHOWN ON THE CONTRACT DRAWING, AND WHERE SHOWN, THE ACCURACY OF THE POSITION OF SUCH UTILITIES AND STRUCTURES IS NOT GUARANTEED. PRIOR TO CONSTRUCTION, THE CONTRACTOR SHALL VERIFY THE EXACT LOCATION OF ALL SUCH UTILITIES AND STRUCTURES, AND SHALL ASSUME ALL LIABILITY FOR DAMAGE TO THEM DURING THE COURSE OF CONSTRUCTION. ANY RELOCATION OF EXISTING UTILITIES REQUIRED BY THE DEVELOPMENT OF SUBJECT LANDS IS TO BE UNDERTAKEN AT CONTRACTOR'S EXPENSE.
- THE CONTRACTOR MUST NOTIFY ALL EXISTING UTILITY COMPANY OFFICIALS FIVE (5) BUSINESS DAYS PRIOR TO START OF CONSTRUCTION AND HAVE ALL EXISTING UTILITIES AND SERVICES LOCATED IN THE FIELD OR EXPOSED PRIOR TO THE START OF CONSTRUCTION, INCLUDING BUT NOT LIMITED TO HYDRO, COMMUNICATIONS AND GAS LINES. CONTRACTOR MUST ALSO UNDERTAKE PRE-CONSTRUCTION MEETING WITH CITY OF OTTAWA, IF REQUIRED BY SITE PLAN APPROVAL.
- ALL TRENCHING AND EXCAVATIONS TO BE IN ACCORDANCE WITH THE LATEST REVISIONS OF THE OCCUPATIONAL HEALTH AND SAFETY ACT AND REGULATIONS FOR CONSTRUCTION PROJECTS.
- REFER TO ARCHITECTS PLANS FOR BUILDING DIMENSIONS AND LAYOUT. REFER TO LANDSCAPE PLAN FOR LANDSCAPED DETAILS AND OTHER RELEVANT INFORMATION. ALL INFORMATION SHALL BE CONFIRMED PRIOR TO COMMENCEMENT OF CONSTRUCTION.
- TOPOGRAPHIC SURVEY COMPLETED AND PROVIDED BY FAIRHALL, MOFFATT & WOODLAND LIMITED, DATED APRIL 24, 2017. CONTRACTOR TO VERIFY IN THE FIELD PRIOR TO CONSTRUCTION OF ANY WORK AND NOTIFY THE ENGINEER OF ANY DISCREPANCIES.
- THE LOCATION OF UNDERGROUND SERVICES ARE BASED ON AVAILABLE DRAWINGS, HOWEVER, CONTRACTOR MUST ENSURE THAT THIS INFORMATION IS VERIFIED PRIOR TO CONSTRUCTION AND NOTIFY ENGINEER IMMEDIATELY OF ANY DISCREPANCIES.
- ALL ELEVATIONS ARE GEODETIC AND UTILIZE METRIC UNITS.
- ALL GROUND SURFACES SHALL BE EVENLY GRADED WITHOUT PONDING AREAS AND WITHOUT LOW POINTS EXCEPT WHERE APPROVED SWALE OR CATCH BASIN OUTLETS ARE PROVIDED.
- ALL EDGES OF DISTURBED PAVEMENT SHALL BE SAW CUT TO FORM A NEAT AND STRAIGHT LINE PRIOR TO PLACING NEW PAVEMENT. PAVEMENT REINSTATEMENT SHALL BE WITH STEP JOINTS OF 300mm WIDTH MINIMUM FOR AREAS WITH PAVEMENT DEPTHS EXCEEDING 60mm.
- ALL DISTURBED AREAS OUTSIDE PROPOSED GRADING LIMITS TO BE RESTORED TO ORIGINAL ELEVATIONS AND CONDITIONS UNLESS OTHERWISE SPECIFIED. ALL RESTORATION SHALL BE COMPLETED WITH THE GEOTECHNICAL REQUIREMENTS FOR BACKFILL AND COMPACTION.
- ALL MATERIAL SUPPLIED AND PLACED FOR PARKING LOT AND ACCESS ROAD CONSTRUCTION SHALL BE TO OPSS STANDARDS AND SPECIFICATIONS UNLESS OTHERWISE NOTED. CONSTRUCTION TO OPSS 310 AND OPSS MUNI 206 & 314. MATERIALS TO OPSS 1001 AND OPSS MUNI 1003 & 1010.
- ABUTTING PROPERTY GRADES TO BE MATCHED.
- MINIMIZE DISTURBANCE TO EXISTING VEGETATION DURING THE EXECUTION OF ALL WORKS.

- REMOVE FROM SITE ALL EXCESS EXCAVATED MATERIAL UNLESS OTHERWISE DIRECTED FROM THE ENGINEER. EXCAVATE AND REMOVE ALL ORGANIC MATERIAL AND DEBRIS LOCATED WITHIN THE PROPOSED BUILDING, PARKING AND ROADWAY LOCATIONS.
- PRIOR TO CONSTRUCTION, A GEOTECHNICAL ENGINEER REGISTERED IN THE PROVINCE OF ONTARIO IS TO INSPECT ALL SUB-SURFACES FOR FOOTINGS, SERVICES AND PAVEMENT STRUCTURES.
- FOR ANY SOILS RELATED INFORMATION, REFER TO THE GEOTECHNICAL INVESTIGATION REPORT BY PATERSON GROUP INC. DATED APRIL 18, 2017, AND SUBSEQUENT MEMO DATED AUGUST 3, 2017.
- PAVEMENT STRUCTURE SHALL CONSIST OF:
  - LIGHT DUTY**  
50mm WEAR COURSE - HL-3 OR SUPERPAVE 12.5 ASPHALTIC CONCRETE  
150mm BASE - OPSS GRANULAR A CRUSHED STONE  
300mm SUBBASE - OPSS GRANULAR B TYPE II  
SUBGRADE - OPSS GRANULAR B TYPE I OR II PLACED OVER IN SITU SOIL OR FILL
  - HEAVY DUTY**  
40mm WEAR COURSE - HL-3 OR SUPERPAVE 12.5 ASPHALTIC CONCRETE  
50mm BINDER COURSE - HL-8 OR SUPERPAVE 19.0 ASPHALTIC CONCRETE  
150mm BASE - OPSS GRANULAR A CRUSHED STONE  
450mm SUBBASE - OPSS GRANULAR B TYPE II  
SUBGRADE - EITHER IN SITU SOIL, FILL, OR OPSS GRANULAR B TYPE I OR II PLACED OVER IN SITU SOIL
  - RIGID (FOR DRIVE-THRU) (AT OWNER DISCRETION)**  
150mm REINFORCED CONCRETE - MINIMUM 52 MPa CLASS C1 CONCRETE  
100mm BASE - OPSS GRANULAR A CRUSHED STONE  
400mm SUBBASE - OPSS GRANULAR B TYPE II  
SUBGRADE - EITHER IN SITU SOIL, FILL, OR OPSS GRANULAR B TYPE I OR II PLACED OVER IN SITU SOIL, FILL, AND/OR BEDROCK  
IT IS RECOMMENDED THAT THE CONCRETE SLAB BE REINFORCED WITH 152x152 MESH 8/8 GAUGE WELDED WIRE MESH. THE REINFORCEMENT WOULD BE ADEQUATELY SUPPORTED BY 50 MM THICK MASONRY BLOCKING WITH A WIRE MESH OVERLAP OF A MINIMUM 150 MM.

**GENERAL NOTES:**

THE ENGINEER WAIVES ANY AND ALL RESPONSIBILITY AND LIABILITY FOR PROBLEMS WHICH ARISE FROM FAILURE TO FOLLOW THE PLANS, SPECIFICATIONS AND THE DESIGN INTENT FOR OTHERS FAILURE TO OBTAIN AND/OR FOLLOW THE ENGINEER'S GUIDANCE WITH RESPECT TO ANY ERRORS, OMISSIONS, INCONSISTENCIES AMBIGUITIES OR CONFLICTS WHICH ARE ALLEGED.

CONTRACTOR TO VERIFY ALL DIMENSIONS AND NOTIFY THE ENGINEER OF ANY DISCREPANCIES BEFORE WORK COMMENCES. DO NOT SCALE DRAWINGS.



APPROVED  REFUSED

THIS \_\_\_\_\_ DAY OF \_\_\_\_\_, 20\_\_\_\_

DERRICK MOODIE, MANAGER  
DEVELOPMENT REVIEW WEST  
PLANNING, INFRASTRUCTURE AND ECONOMIC  
DEVELOPMENT DEPARTMENT, CITY OF OTTAWA

No.	ISSUED FOR	J.L.	DATE
01	COORDINATION	J.L.	JULY 28, 2017
REVISIONS			



NOT VALID UNLESS SIGNED AND DATED

**WSP**

300-811 QUEENSWAY DRIVE  
OTTAWA, ONTARIO CANADA K2B 8Z2  
TEL: 1-613-829-2800 | FAX: 1-613-829-4599 | WWW.WSP.COM

CLIENT

**FIRST BAY PROPERTIES INC**  
311 RICHMOND ROAD, SUITE 203  
OTTAWA, ON  
K1Z 6X3

DESIGNED BY: J.L. DRAWN BY: J.L. APPROVED BY: J.J.

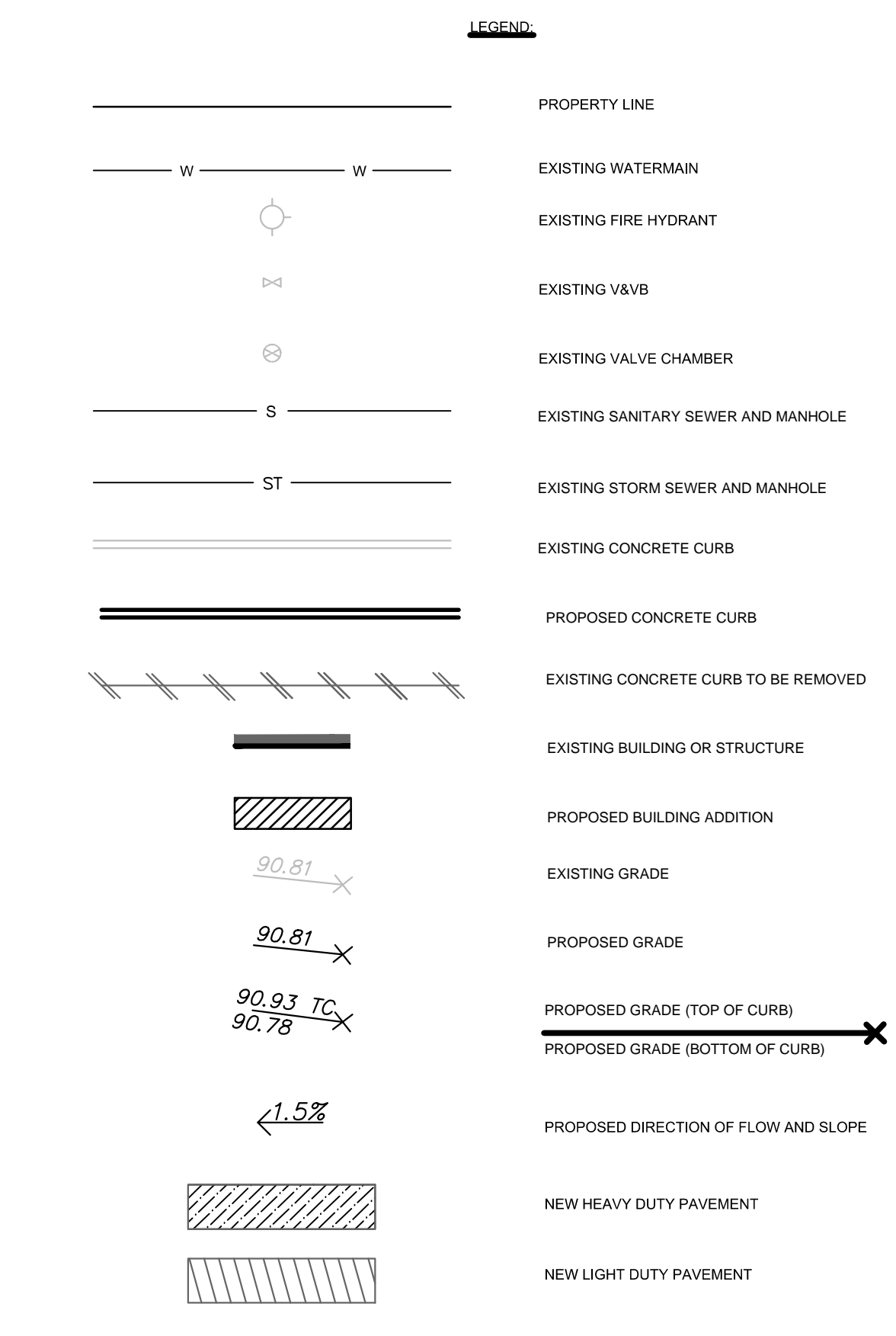
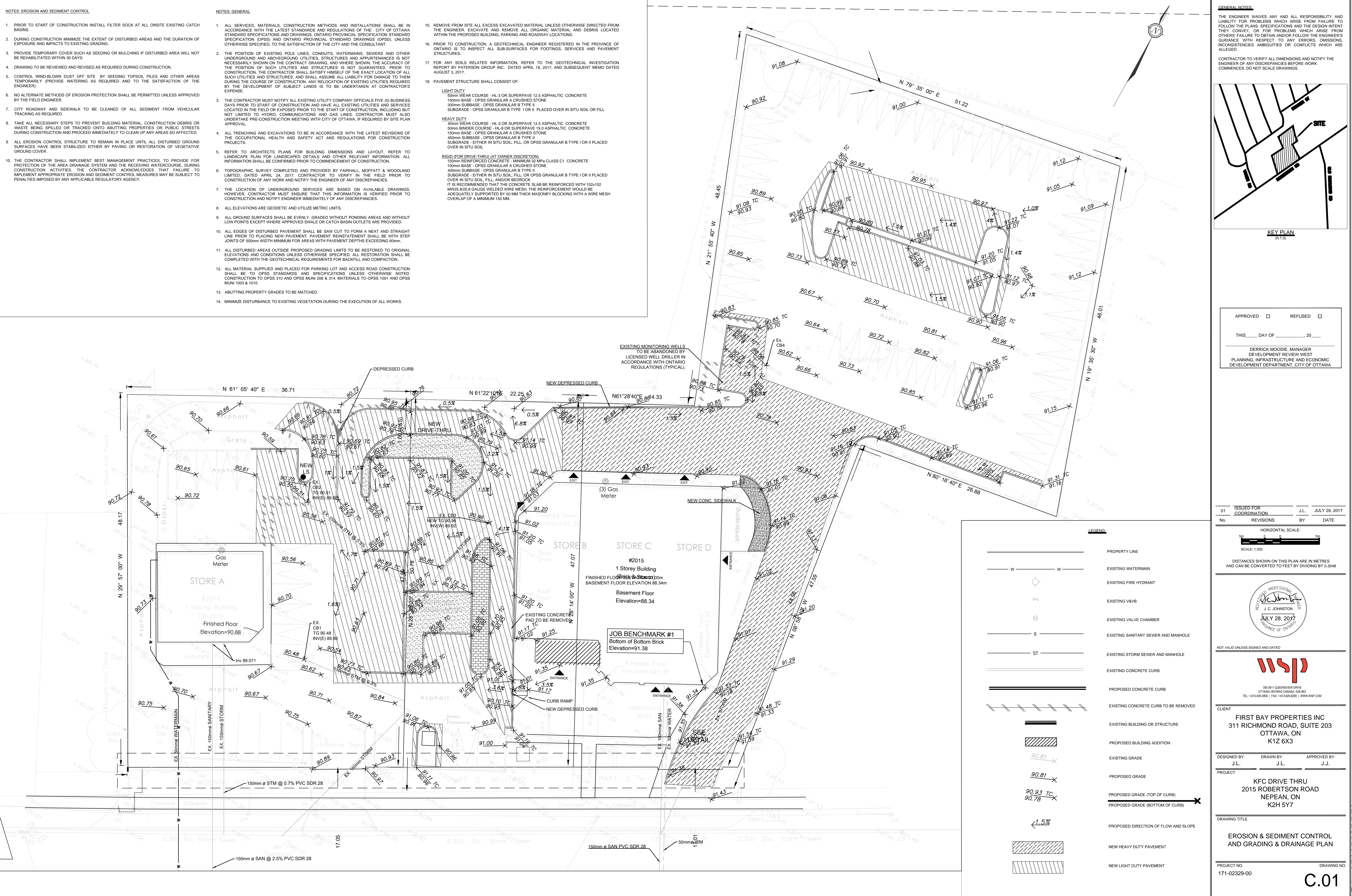
PROJECT

**KFC DRIVE THRU**  
2015 ROBERTSON ROAD  
NEPEAN, ON  
K2H 5Y7

DRAWING TITLE

**EROSION & SEDIMENT CONTROL  
AND GRADING & DRAINAGE PLAN**

PROJECT NO. 171-02329-00 DRAWING NO. C.01



FILENAME: P:\2017 Projects\171-02329-00\_2015 Robertson Road\Change\Working\Drawings\DWG\171-02329-00\_Civil\Drawings\_NEPV.dwg  
PLOT DATE: Aug 04, 2017 - 10:27am, cawson.somers

171-02329-00-C.01