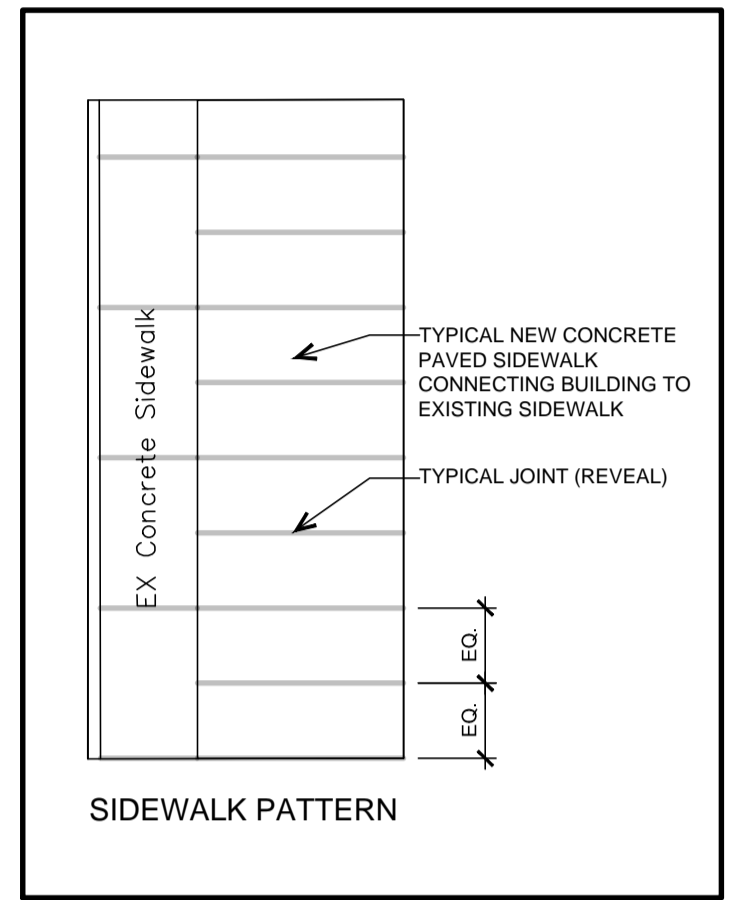


LEGAL DESCRIPTION
PIN 041930192; JG NPT TWP LOT 18

PLANTS

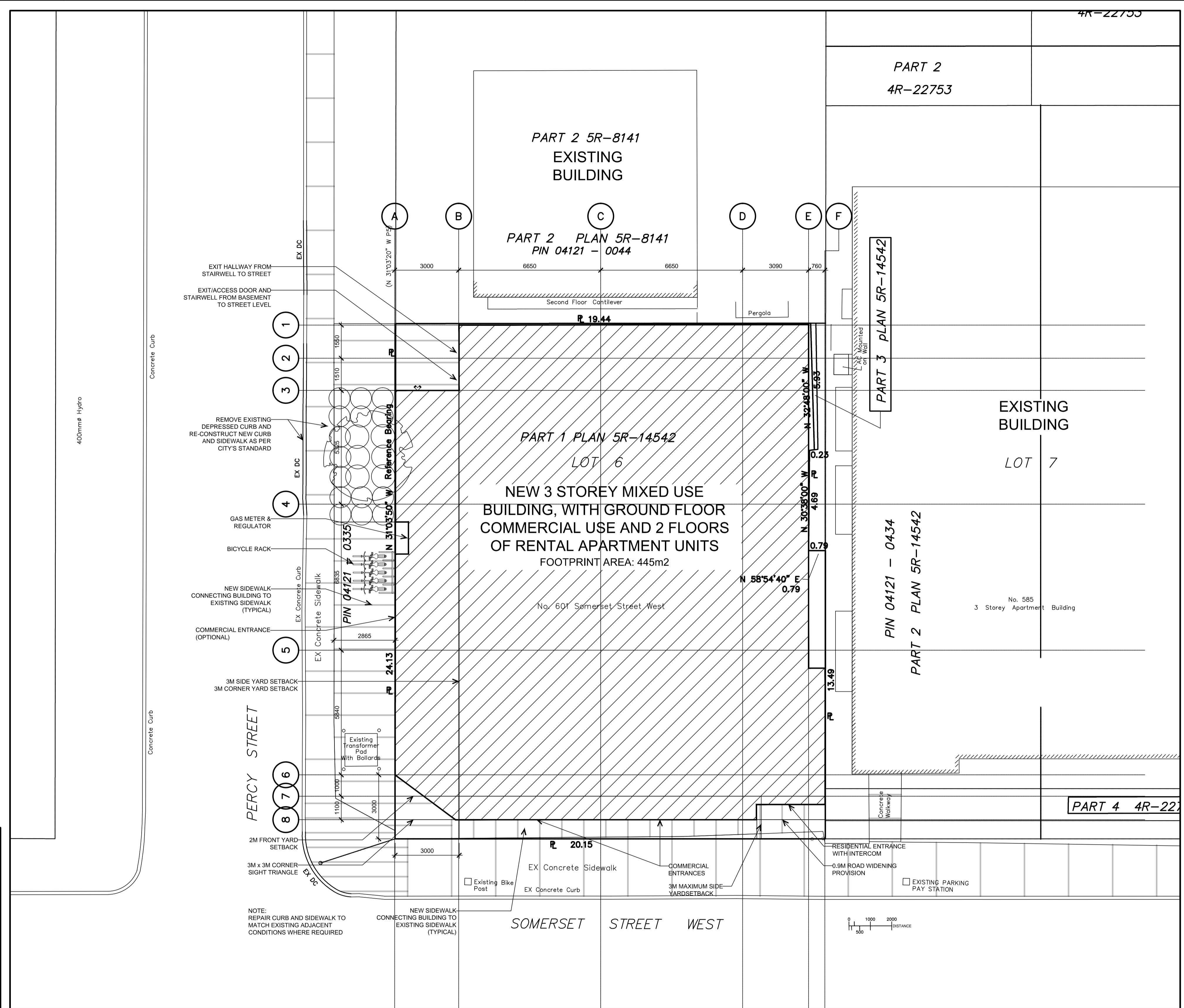
1	Ivory Silk Japanese Tree Lilac (Syringa reticulata)
6	60mm cal. Baller and Burgeoned Condition Tree Form
8	Annabelle Hydrangea (Hydrangea arborescens)
9	5 gallon pot potted condition Plant 1 meter O.C.
18	Strawberries and Cream Ribbon Grass (Phalaris arundinacea) 2 gallon pot potted condition.



LEGEND:

	COMPACTED FILL OVER EXISTING FOUNDATIONS
	SIAMESE CONNECTION
EX DC	EXISTING DEPRESSED CURB
FAP	FIRE ANNOUNCIATION PANEL
RD	ROOF DRAIN

GENERAL NOTE:
ALL AREAS ARE APPROXIMATE



1	Aug. 1, 2017	Issued for Site Plan Control Application	AL
no.	date	revision / issue	by

grc architects
47 Clarence Street, Suite 401,
Ottawa, Ontario K1N 5K1
t:613.241.8203, f:613.241.4180
info@grcarchitects.com www.grcarchitects.com

north point

professional stamp
ONTARIO ASSOCIATION
OF ARCHITECTS
ALEX LEUNG
LICENCE 6370

project title
PERCY & SOMERSET
Ottawa Ontario

drawing title
SITE PLAN / LANDSCAPE PLAN

date	job.no.
scales 1:100	1716
drawn PR/SF	drawing no.
approved	A001
plot date 2017/08/01	

1 DO NOT SCALE THIS DRAWING.
2 CONTRACTOR TO VERIFY ALL DIMENSIONS AND NOTIFY THE ARCHITECT OF ANY DISCREPANCIES BEFORE WORK COMMENCES.
3 THIS DRAWING TO BE READ IN CONJUNCTION WITH THE FOLLOWING DRAWINGS: STRUCTURAL, MECHANICAL, ELECTRICAL.