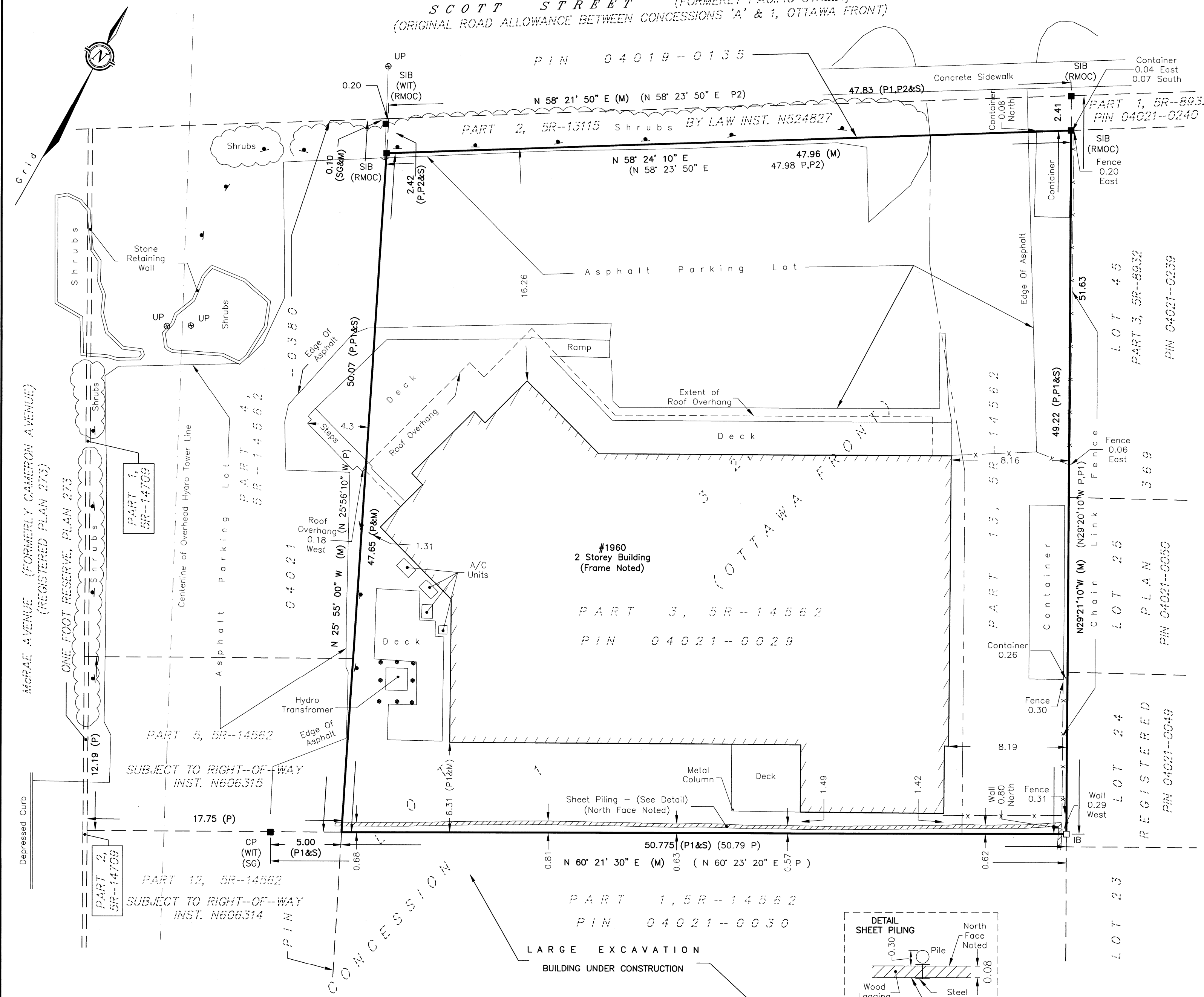
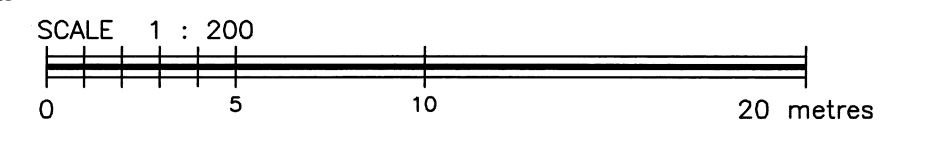


METRIC
 DISTANCES SHOWN ON THIS PLAN ARE IN METRES AND
 CAN BE CONVERTED TO FEET BY DIVIDING BY 0.3048



SURVEYOR'S REAL PROPERTY REPORT - PART 1
 PLAN OF
 PART OF LOT 32
 CONCESSION 1 (OTTAWA FRONT)
 GEOGRAPHIC TOWNSHIP OF NEPEAN
 Now CITY OF OTTAWA



FAIRHALL, MOFFATT & WOODLAND LIMITED

ONTARIO LAND SURVEYORS
NOTES
 BEARINGS ARE GRID, DERIVED FROM REAL TIME NETWORK
 OBSERVATIONS AND ARE REFERRED TO THE CENTRAL MERIDIAN,
 76°30'W LONGITUDE MTM ZONE 9, NAD83 ORIGINAL.

- LEGEND**
- - SURVEY MONUMENT SET
 - - SURVEY MONUMENT FOUND
 - CP - CONCRETE PIN
 - IB - IRON BAR
 - SIB - STANDARD IRON BAR
 - (P) - PLAN 5R-14562
 - (P1) - PLAN OF SURVEY BY STANTEC GEOMATICS LTD. DATED AUGUST 20, 2014 (PROJECT 161612927-111)
 - (P2) - PLAN 5R-13115
 - (S) - SET
 - (M) - MEASURED
 - (RMOC) - REGIONAL MUNICIPALITY OF OTTAWA-CARLETON
 - (SG) - STANTEC GEOMATICS LTD.
 - CONTAINER - PORTABLE STEEL STORAGE CONTAINER
 - PIN - PROPERTY IDENTIFIER NUMBER
 - - SIGN
 - - BOULDER
 - UP ⊙ - UTILITY POLE
 - ← - GUY WIRE

**SURVEYOR'S REAL PROPERTY REPORT - PART 2
 REPORT SUMMARY**

DESCRIPTION OF LAND
 PART OF LOT 32, CONCESSION 1 (OTTAWA FRONT), GEOGRAPHIC TOWNSHIP OF NEPEAN, CITY OF OTTAWA DESIGNATED AS PARTS 3 & 13, PLAN 4R-14562 AS IN ALL OF PIN 04021-0029.

REGISTERED EASEMENTS
 TOGETHER WITH A RIGHT-OF-WAY OVER PART 5, PLAN 4R-14562 AS IN INST. N606315.

REMARKS
 NOTE LOCATION OF PERIMETER FENCES AND HEDGES AS SHOWN ON PART 1. THE PLAN. NOTE LOCATION OF DECK, ROOF OVERHANG & STONE RETAINING WALLS IN RELATION TO HYDRO LANDS TO THE WEST. NOTE LOCATION OF SHEET PILING AND EXCAVATION ALONG SOUTHERLY PROPERTY LINE.

ZONING
 COMPLIANCE WITH ZONING, LAND USE, ENVIRONMENTAL AND BUILDING REGULATIONS NOT CERTIFIED BY THIS REPORT.

THIS REPORT WAS PREPARED FOR
McRAE AVENUE (OTTAWA) DEVELOPMENT INC.
 THE UNDERSIGNED ACCEPTS NO
 RESPONSIBILITY FOR USE BY OTHER PARTIES.

SURVEYOR'S CERTIFICATE
 I CERTIFY THAT:
 1. THIS SURVEY AND PLAN ARE CORRECT AND IN ACCORDANCE WITH THE SURVEYS ACT, THE SURVEYORS ACT AND THE LAND TITLES ACT AND THE REGULATIONS MADE UNDER THEM.
 2. THE SURVEY WAS COMPLETED ON OCTOBER 15, 2014.
 OCTOBER 15, 2014
 DATE
 DAVID W. WOODLAND
 ONTARIO LAND SURVEYOR

 Fairhall Moffatt & Woodland LIMITED ONTARIO LAND SURVEYORS Surveying and Land Information Services 100-600 TERRY FOX DRIVE, KANATA, ONTARIO K2L 4B6 TEL: (613) 591-2580 FAX: (613) 591-1495 www.fmw.on.ca	ASSOCIATION OF ONTARIO LAND SURVEYORS PLAN SUBMISSION FORM 1920936 THIS PLAN IS NOT VALID UNLESS IT IS AN EMBOSSED ORIGINAL COPY ISSUED BY THE SURVEYOR In accordance with Regulation 1026, Section 29 (3).
	JOB No. T 3 8 1 0 0 E 363524, N 5028807 REFERENCE No. 242 - 1(O)F NP (32) S:\JOBS\T38100\DWGS 2014-10-15 srpr381t.dwg (kb)

© COPYRIGHT 2014. REPRODUCTION, ALTERATION OR DISTRIBUTION OF THIS PLAN WITHOUT THE WRITTEN CONSENT OF FAIRHALL, MOFFATT & WOODLAND LIMITED IS PROHIBITED.