

TOPOGRAPHICAL PLAN OF

LOT 24 AND PART OF LOTS 23 AND 25
NORTH GLADSTONE AVENUE
REGISTERED PLAN 22855
CITY OF OTTAWA

Prepared by
ANNIS, O'SULLIVAN, VOLLEBEKK LTD.

Oct 22/07
Date

[Signature]
Wakar A. Bhatti O.L.S.

Scale 1:200

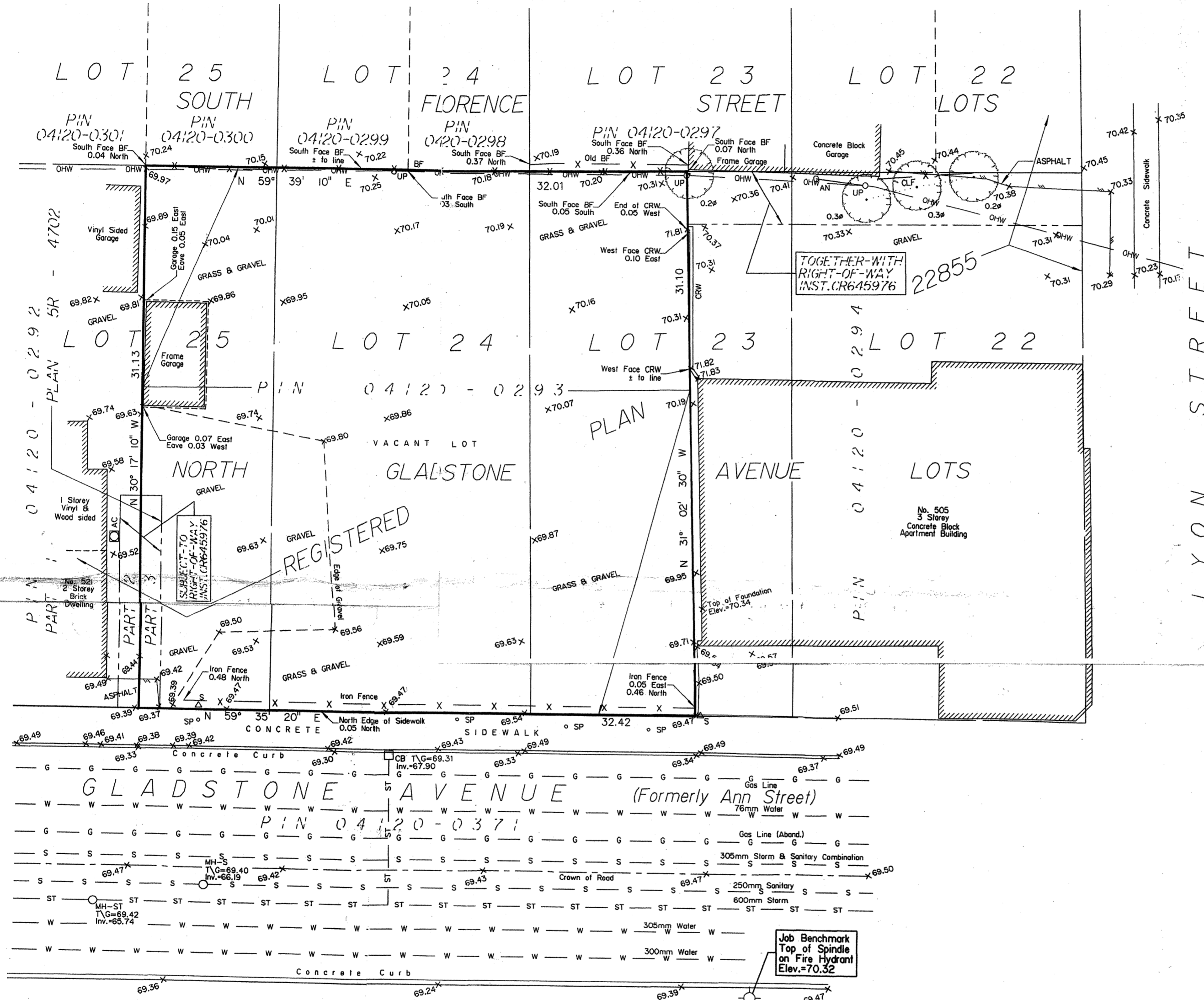


Metric

DISTANCES SHOWN ON THIS PLAN ARE IN METRES AND CAN BE CONVERTED TO FEET BY DIVIDING BY 0.3048

LEGEND

Denotes	
○ AN	Anchor
○ UP	Utility Pole
○	Deciduous Tree
○ MH-ST	Maintenance Hole (Storm Sewer)
○ MH-S	Maintenance Hole (Sanitary)
○ FH	Fire Hydrant
○ SP	Stand Pipe
□ CB	Catch Basin
△ S	Sign
BF	Board Fence
∅	Diameter
+65.00	Location of Elevations
T/G	Top of Lid/Grate
C/L	Centreline
Inv.	Invert
---	Property Line
— S —	Underground Sanitary Sewer
— ST —	Underground Storm Sewer
— W —	Underground Storm Sewer
— G —	Underground Water Line
— G —	Underground Gas



SITE AREA = 1002 m²

BOUNDARY INFORMATION COMPILED FROM SURVEY RECORDS.

ELEVATION NOTES
1. Elevations shown are referred to geodetic datum.
2. It is the responsibility of the user of this information to verify that the job benchmark has not been altered or disturbed and that its relative elevation and description agrees with the information shown on this drawing.

UTILITY NOTES
1. This drawing cannot be accepted as acknowledging all of the utilities and it will be the responsibility of the user to contact the respective utility authorities for confirmation.
2. Only visible surface utilities were located.
3. Underground utilities were compiled from R.W. Connelly Associates Inc. drawing No.R-1936-R-6 (Sheet 6 of 23) dated May 1992.
3. A field location of underground plant by the pertinent utility authority is mandatory before any work involving breaking ground, probing, excavating etc.

ANNIS, O'SULLIVAN, VOLLEBEKK LTD.
14 Concourse Gate, Suite 500
Nepean, Ont. K2E 7S6
Phone: (613) 727-0850 / Fax: (613) 727-1079
Email: mapan@aovltd.com
Job No. 6262-07 Carlie P11123-25 RP22855 TP F.dwg