

DRAWING LEGEND

- CB CATCH BASIN
- MH MANHOLE
- CB/MH CATCH BASIN/MANHOLE
- WS WATER SERVICE / WATERMAIN
- SAN SANITARY SEWER
- ST STORM SEWER
- VP VALVE & VALVE BOX
- WM WATER METER
- UP UTILITY POLE
- UP REMOTE WATER METER READOUT
- +
- EXISTING GRADE ELEVATION
- + 93.79 PROPOSED GRADE ELEVATION
- Key 1
- Light Duty Pavement
- Heavy Duty Pavement
- 0.5% Slope of Grade
- 0.3% Existing Slope of Grade
- 6.6 150mm CURB / DEPRESSED CURB
- - - - - PROPERTY LINE
- FFL FIRST FLOOR ELEVATION
- BFL BASEMENT FLOOR ELEVATION
- USF UNDERSIDE OF FOOTING ELEVATION

KEY PLAN



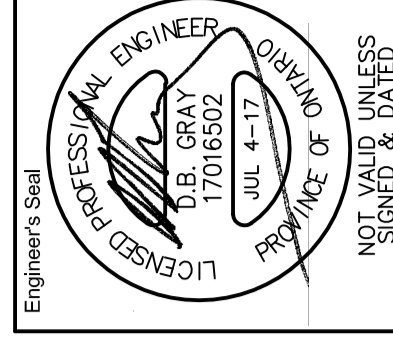
No.	Date	REVISION
1	JUL 4-17	ISSUED FOR APPROVAL

D. B. GRAY ENGINEERING INC.
Sustainable Management, Consulting & Planning - Storm & Sanitary Sewers - Watermain
700 Long Point Circle
Ottawa, Ontario K1T 4E9
Tel: 613-425-8044
dgray@dbgray.com

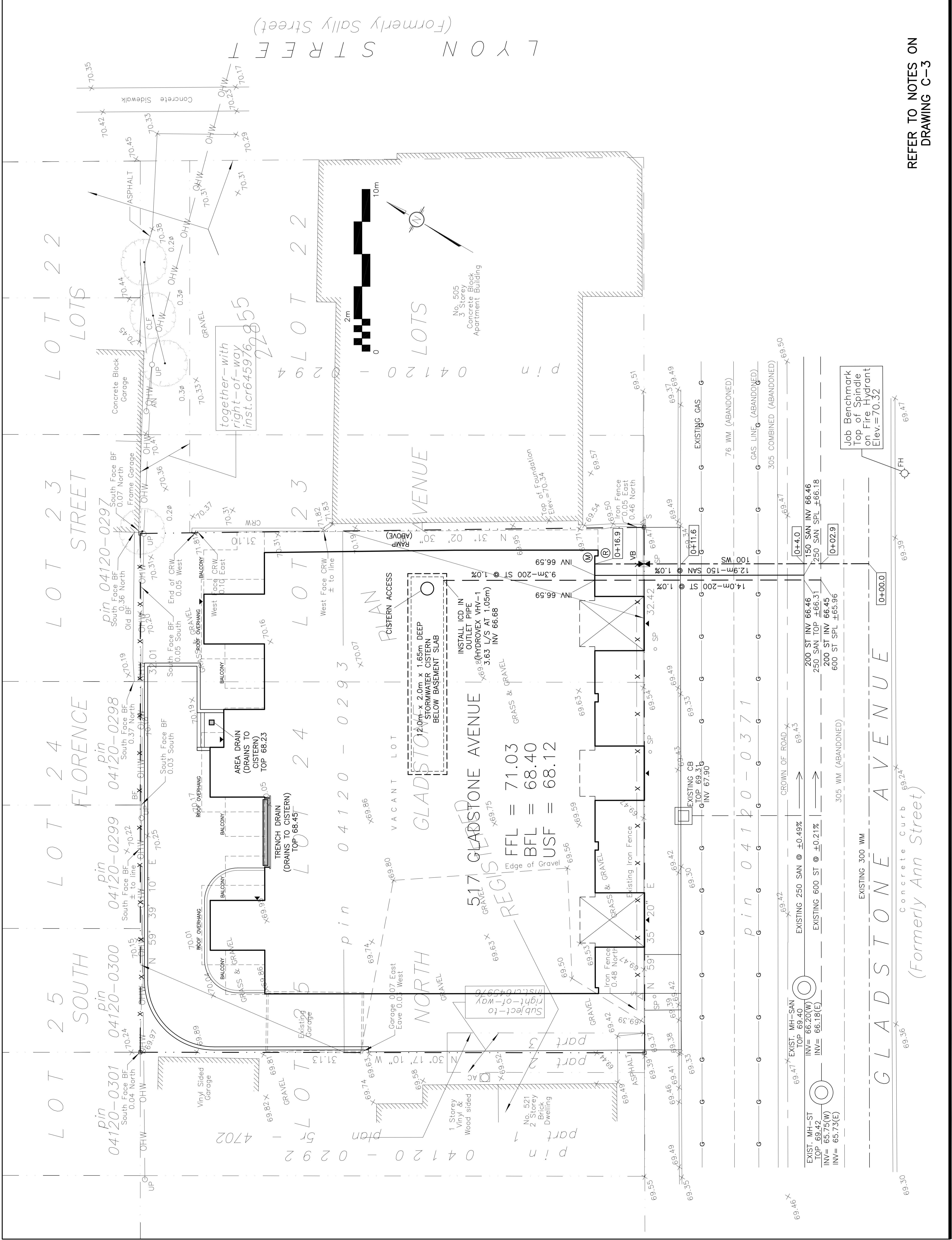
Project
PROPOSED 18-UNIT STACKED FLATS
517 GLADSTONE AVE.
OTTAWA, ONTARIO

Drawing Title

SITE SERVICING PLAN



REFER TO NOTES ON
DRAWING C-3



GLADSTONE AVENUE
(Formerly Ann Street)