

**DRAWING LEGEND**

- CB CATCH BASIN
- MH MANHOLE
- CB/MH CATCH BASIN/MANHOLE
- WS WATER SERVICE / WATERMAIN
- SAN SANITARY SEWER
- ST STORM SEWER
- VP VALVE & VALVE BOX
- FM FIRE HYDRANT
- WM WATER METER
- UPC REMOTE WATER METER READOUT
- UPC UTILITY POLE
- EXISTING GRADE ELEVATION
- + 93.79 PROPOSED GRADE ELEVATION
- KEY LIGHT DUTY PAVEMENT
- HEAVY DUTY PAVEMENT
- 0.5% SLOPE OF GRADE
- 0.3% EXISTING SLOPE OF GRADE
- 0.6% 150mm CURB / DEPRESSED CURB
- PROPERTY LINE
- FFL FIRST FLOOR ELEVATION
- BFL BASEMENT FLOOR ELEVATION
- USF UNDERSIDE OF FOOTING ELEVATION

**KEY PLAN**

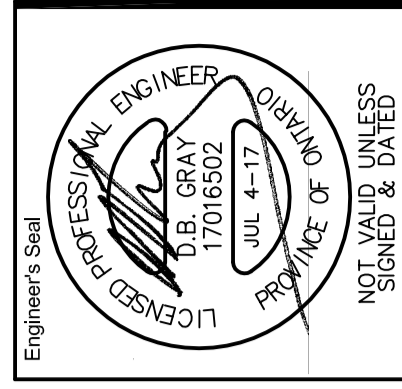


No.	Date	REVISION
1	JUL 4-17	ISSUED FOR APPROVAL

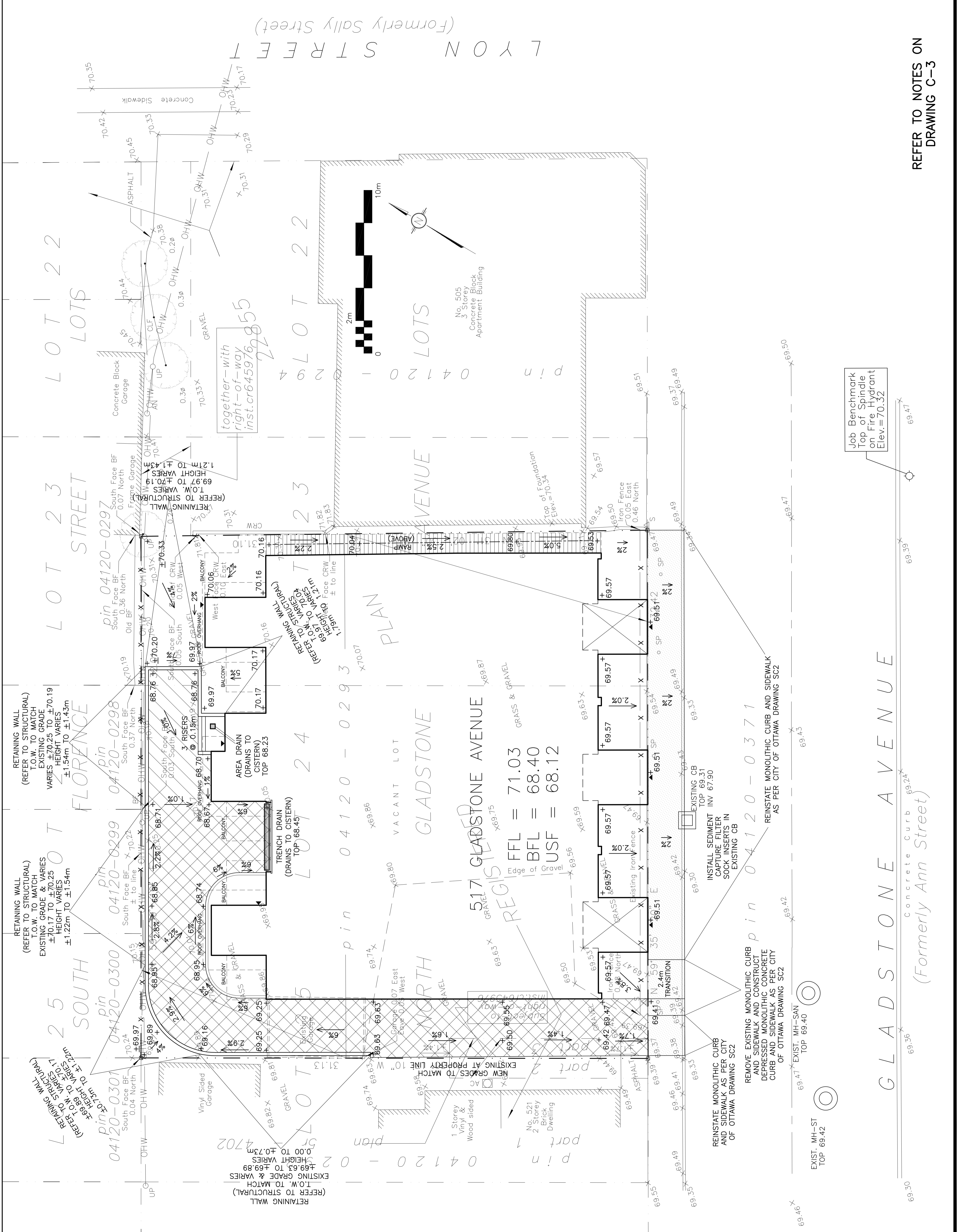
**D. B. GRAY ENGINEERING INC.**  
 Structural Management, Grading & Pavement, Storm & Sanitary Sewers, Watermain  
 700 Long Point Circle  
 Ottawa, Ontario K1T 4E9  
 Tel: 613-425-8044  
 dgray@dbgray.com

Project  
**PROPOSED 18-UNIT STACKED FLATS**  
 517 GLADSTONE AVE.  
 OTTAWA, ONTARIO

Drawing Title  
**GRADING PLAN AND EROSION & SEDIMENT CONTROL PLAN**



REFER TO NOTES ON DRAWING C-3



69.30

69.35

69.49

69.46

69.41

69.38

69.39

69.42

69.30

69.42

69.43

69.49

69.54

69.47

69.49

69.51

69.54

69.57

69.57

69.57

69.57

69.57

69.57

69.57

69.57

69.57

69.57

69.57

69.57

69.57

69.57

69.57

69.57

69.57

69.57

69.57

69.57

69.57

69.57

69.57

69.57

69.57

69.57

69.57

69.57

69.57

69.57

69.57