

OTTAWA-CARLETON STANDARD CONDOMINIUM PLAN 893

TOPOGRAPHIC PLAN OF SURVEY OF LOTS 32, 33, 34, 35 AND 36 REGISTERED PLAN 28 AND PART OF CAMBRIDGE STREET (CLOSED BY JUDGE'S ORDER INST. No. CR653341) REGISTERED PLAN 217882 CITY OF OTTAWA

FARLEY, SMITH & DENIS SURVEYING LTD. 2017 Scale 1:150

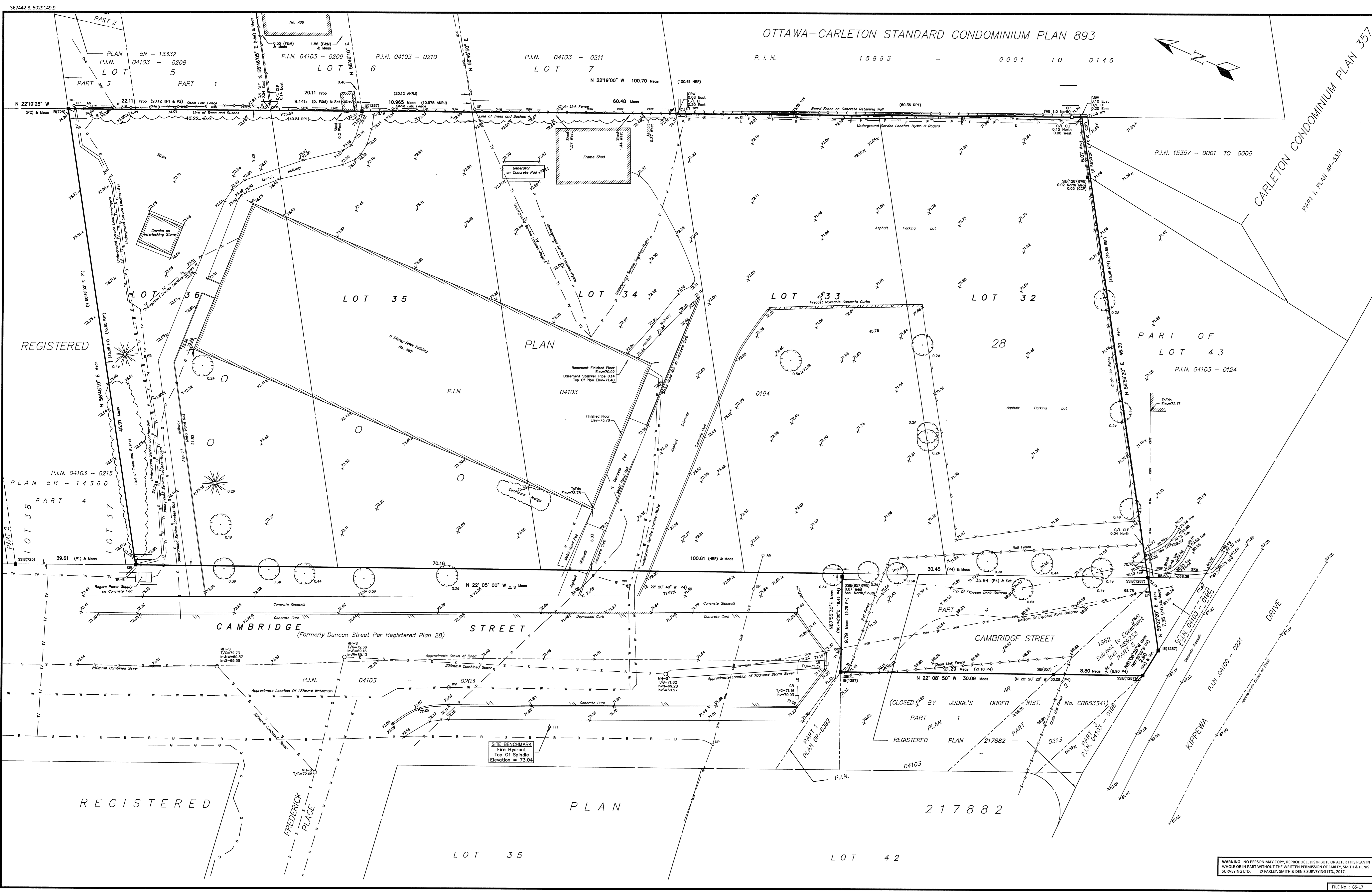
Metric Note Distances and coordinates on this plan are in metres and can be converted to feet by dividing by 3.048.

Bearing Note Bearings are astronomic and are referred to the Easterly limit of Cambridge Street having a bearing of N 22° 22' 00" W as shown on Plan SR-14360.

Elevation Notes 1. Elevations shown are geodetic and are referred to Geodetic Datum CGVD-1928 - 1978. 2. Elevations derived from City of Ottawa Monument No. 3599 (Index No. 160) having a published elevation of 76.499 metres. 3. It is the responsibility of the user of this information to verify that the job benchmark has not been altered or disturbed and that its relative elevation and description agrees with the information shown on this drawing.

Utility Notes 1. This drawing cannot be accepted as acknowledging all of the utilities and it will be the responsibility of the user to contact the respective utility authorities for confirmation. 2. Only visible surface utilities were located. 3. Underground utility data derived from City of Ottawa utility sheet reference: G-10-05 and Drawing No. 002. 4. Sanitary and storm sewer grades and inverts were compiled from Field measurement and City of Ottawa utility sheets. 5. A field location of underground plant by the pertinent utility authority is mandatory before any work involving breaking ground, probing, excavating etc.

Notes & Legend table with symbols and descriptions for survey monuments, iron bars, witness, measured, proportioned, accepted, registered plans, and various utility symbols like storm sewer, water valve, and overhead wires.



Surveyor's Certificate I certify that: 1. This survey and plan are correct and in accordance with the Surveys Act, the Surveys Act and the Regulations made under them. 2. The survey was completed on the 3rd day of April, 2017. Apr. 20/17 Date Daniel Robinson Ontario Land Surveyor

FARLEY, SMITH & DENIS SURVEYING LTD. ONTARIO LAND SURVEYORS CANADA LAND SURVEYORS 190 COLONNADE ROAD, OTTAWA, ONTARIO K2E 7J5 TEL. (613) 727-8226 FAX. (613) 727-1826

WARNING NO PERSON MAY COPY, REPRODUCE, DISTRIBUTE OR ALTER THIS PLAN IN WHOLE OR IN PART WITHOUT THE WRITTEN PERMISSION OF FARLEY, SMITH & DENIS SURVEYING LTD. © FARLEY, SMITH & DENIS SURVEYING LTD., 2017.