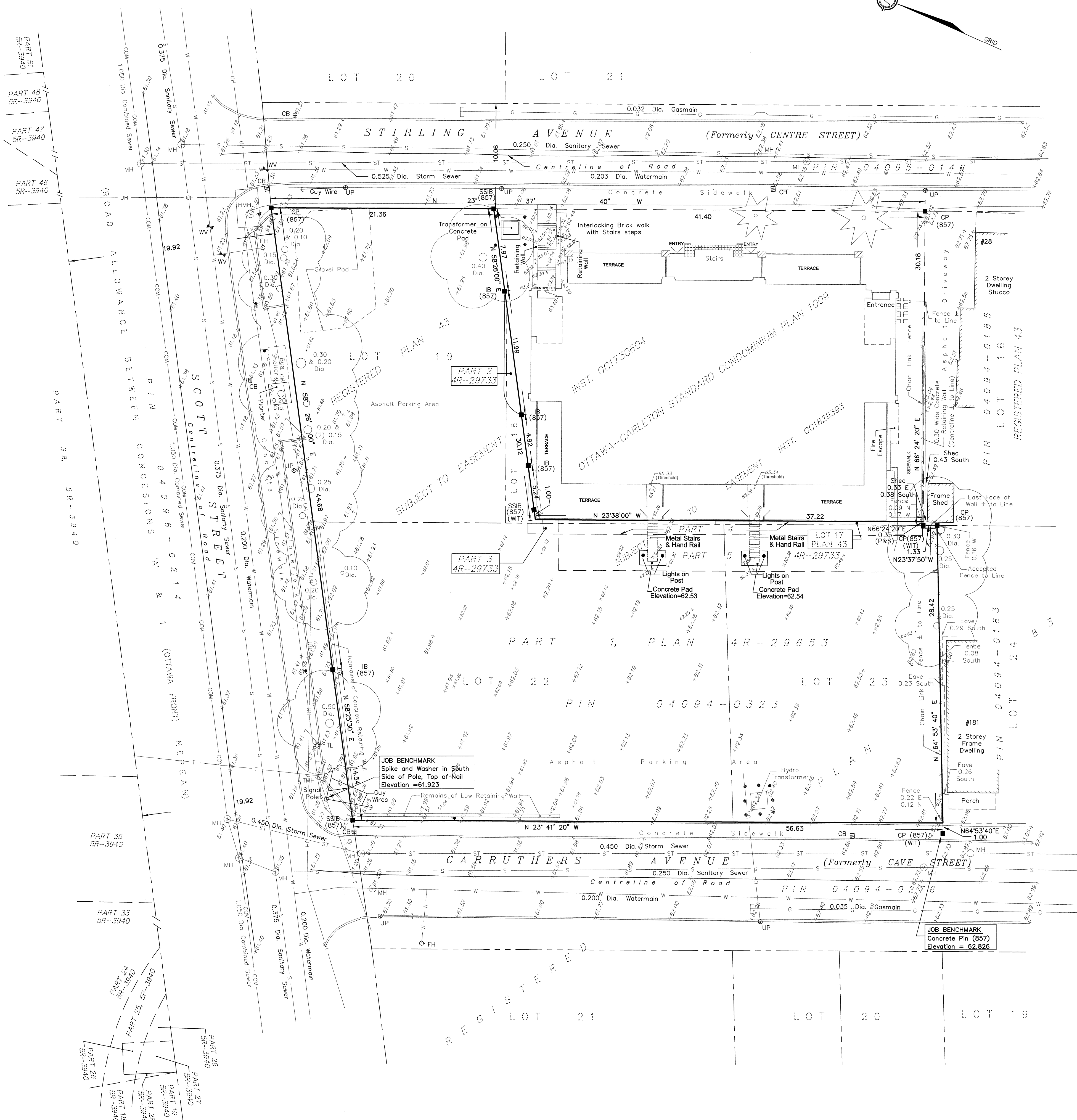
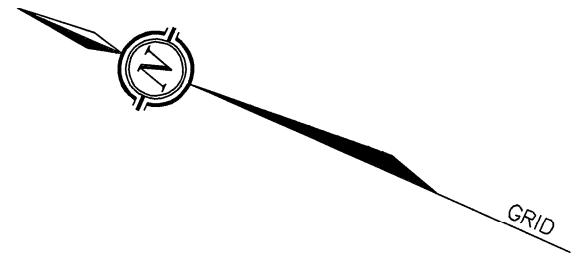
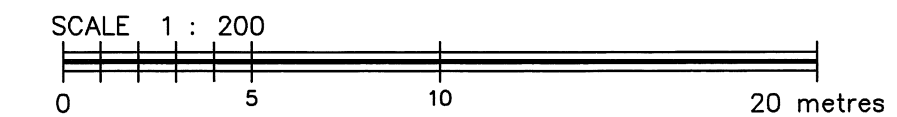


METRIC
DISTANCES AND ELEVATIONS SHOWN ON THIS PLAN ARE IN METRES
AND CAN BE CONVERTED TO FEET BY DIVIDING BY 0.3048



TOPOGRAPHIC SURVEY OF
PART OF LOTS 17, 18 & 19
REGISTERED PLAN 43
AND
LOTS 22 & 23
REGISTERED PLAN 83
CITY OF OTTAWA



FAIRHALL, MOFFATT & WOODLAND LIMITED
ONTARIO LAND SURVEYORS

ELEVATION NOTES

- ELEVATIONS SHOWN HEREON ARE REFERRED TO GEODETIC DATUM.
- ELEVATIONS FOR MANHOLE COVERS AND CATCH BASINS HAVE TO BE INDEPENDENTLY CONFIRMED BEFORE THEY CAN BE ACCEPTED FOR FINAL DESIGN OR CONSTRUCTION PURPOSES.
- IT IS THE RESPONSIBILITY OF THE USER OF THIS INFORMATION TO VERIFY THAT THE JOB BENCHMARK HAS NOT BEEN ALTERED OR DISTURBED AND THAT ITS RELATIVE ELEVATION AND DESCRIPTION AGREE WITH THE INFORMATION SHOWN ON THIS DRAWING.

UTILITY NOTES

- THIS DRAWING CANNOT BE ACCEPTED AS ACKNOWLEDGING ALL OF THE UNDERGROUND UTILITIES AND IT WILL BE THE RESPONSIBILITY OF THE USER TO CONTACT THE RESPECTIVE UTILITY AGENCIES BUT HAVE BEEN COMPILED FROM DATA OBTAINED FROM THE FOLLOWING SOURCE:
a) CITY OF OTTAWA PUBLIC UTILITIES REGISTRY
- UNDERGROUND UTILITIES, AS REPORTED ON THIS DRAWING, ARE NOT BASED ON AN ACTUAL 'FIELD LOCATE' BY THE RESPECTIVE UTILITY AGENCIES BUT HAVE BEEN COMPILED FROM DATA OBTAINED FROM THE FOLLOWING SOURCE:
a) CITY OF OTTAWA PUBLIC UTILITIES REGISTRY
- BEFORE ANY WORK INVOLVING PROBING, EXCAVATING, ETC., A FIELD LOCATION OF UNDERGROUND PLANT BY THE PERTINENT UTILITY AUTHORITY IS MANDATORY.

NOTES

- BEARINGS ARE GRID DERIVED FROM PLAN 4R-29653 AND ARE REFERRED TO THE CENTRAL MERIDIAN 76°30'W LONGITUDE, MTM ZONE 9 (NAD83 ORIGINAL).

LEGEND

■	- SURVEY MONUMENT FOUND	●	- BOLLARD
SIB	- STANDARD IRON BAR	✱	- SIGN
SSIB	- SHORT STANDARD IRON BAR	✱	- CONIFEROUS TREE
CC	- CUT CROSS	○	- DECIDUOUS TREE
CP	- CONCRETE PIN	—W—	- WATERMAIN
IP	- IRON PIPE	—	- OVERHEAD UTILITY WIRES
(WIT)	- WITNESS	—UH—	- UNDERGROUND HYDRO
DIA.	- DIAMETER	-COM-	- COMBINED SEWER
PIN	- PROPERTY IDENTIFIER NUMBER	-G-	- GAS MAIN
PT	- PART	-ST-	- STORM SEWER
CB	- CATCH BASIN	-S-	- SANITARY SEWER
○ MH	- MANHOLE	—	- CURB
○ TMH	- TRAFFIC MANHOLE		
○ HMH	- HYDRO MANHOLE		
● LS	- LAMP STANDARD		
○ UP	- UTILITY POLE		
○ FH	- FIRE HYDRANT		
○ WV	- WATER VALVE		
✱ TL	- TRAFFIC LIGHT		
⊥	- GUY WIRE AND ANCHOR		

SURVEYOR'S CERTIFICATE

I CERTIFY THAT:
1. THIS SURVEY AND PLAN ARE CORRECT AND IN ACCORDANCE WITH THE SURVEYS ACT, THE SURVEYORS ACT, THE LAND TITLES ACT AND THE REGULATIONS MADE UNDER THEM.

2. THE SURVEY WAS COMPLETED ON APRIL 28, 2017.
2017/05/09 DATE
JOHN H. GUTRI
ONTARIO LAND SURVEYOR

Fairhall Moffatt & Woodland ONTARIO LAND SURVEYORS Surveying and Land Information Services 100-800 TERRY FOX DRIVE, KANATA, ONTARIO K2L 4B6 TEL: (613) 591-2580 FAX: (613) 591-1495 www.fmw.on.ca		JOB No. S 11300
		E 365200, N 5029833
		REFERENCE No. 14-83, 6-43 (STIRLING)
		S:\OBS\11300\DWG revised topo april27.2017.dwg (d) May 1, 2017

© COPYRIGHT 2017. REPRODUCTION, ALTERATION OR DISTRIBUTION OF THIS PLAN WITHOUT THE WRITTEN CONSENT OF FAIRHALL, MOFFATT & WOODLAND LIMITED IS PROHIBITED.