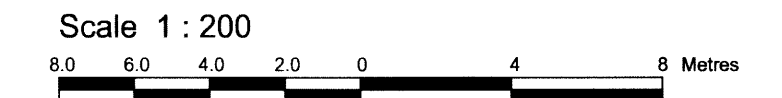


PART OF LOT 34  
CONCESSION B (RIDEAU FRONT)  
Geographic Township of Nepean  
CITY OF OTTAWA

Prepared by Annis, O'Sullivan, Vollebek Ltd.  
Field Work Completed September 26, 2016



Metric  
DISTANCES SHOWN ON THIS PLAN ARE IN METRES AND  
CAN BE CONVERTED TO FEET BY DIVIDING BY 0.3048

Date: Oct 30/2016  
Signature: André Roy, O.L.S.

Notes & Legend

Denotes	
○ FH	Fire Hydrant
○ MH-ST	Maintenance Hole (Storm Sewer)
○ MH-S	Maintenance Hole (Sanitary)
○ MH-B	Maintenance Hole (Bell Telephone)
○ VC	Valve Chamber (Watermain)
— OHW	Overhead Wires
□ CB	Catch Basin
○ GV	Gas Valve
○ TB-B	Bell Terminal Box
○ TB	Unidentified Terminal Box
○ GM	Gas Meter
CLF	Chain Link Fence
CRW	Concrete Retaining Wall
WRW	Wooden Retaining Wall
△ S	Sign
○ UP	Utility Pole
AN	Anchor
○ LS	Light Standard
∅	Diameter
+55.00	Location of Elevations
+55.00	Top of Concrete Curb Elevation
+55.00	Top of Wall Elevations
C/L	Centreline
—	Property Line
T/G	Top of Grate
○	Deciduous Tree
★	Coniferous Tree
DC	Depressed Curb

Bearings are grid and are referred to the Central Meridian of MTM Zone 9 (76°30' West Longitude) NAD-83 (original).

SITE AREA = 5075 m<sup>2</sup>

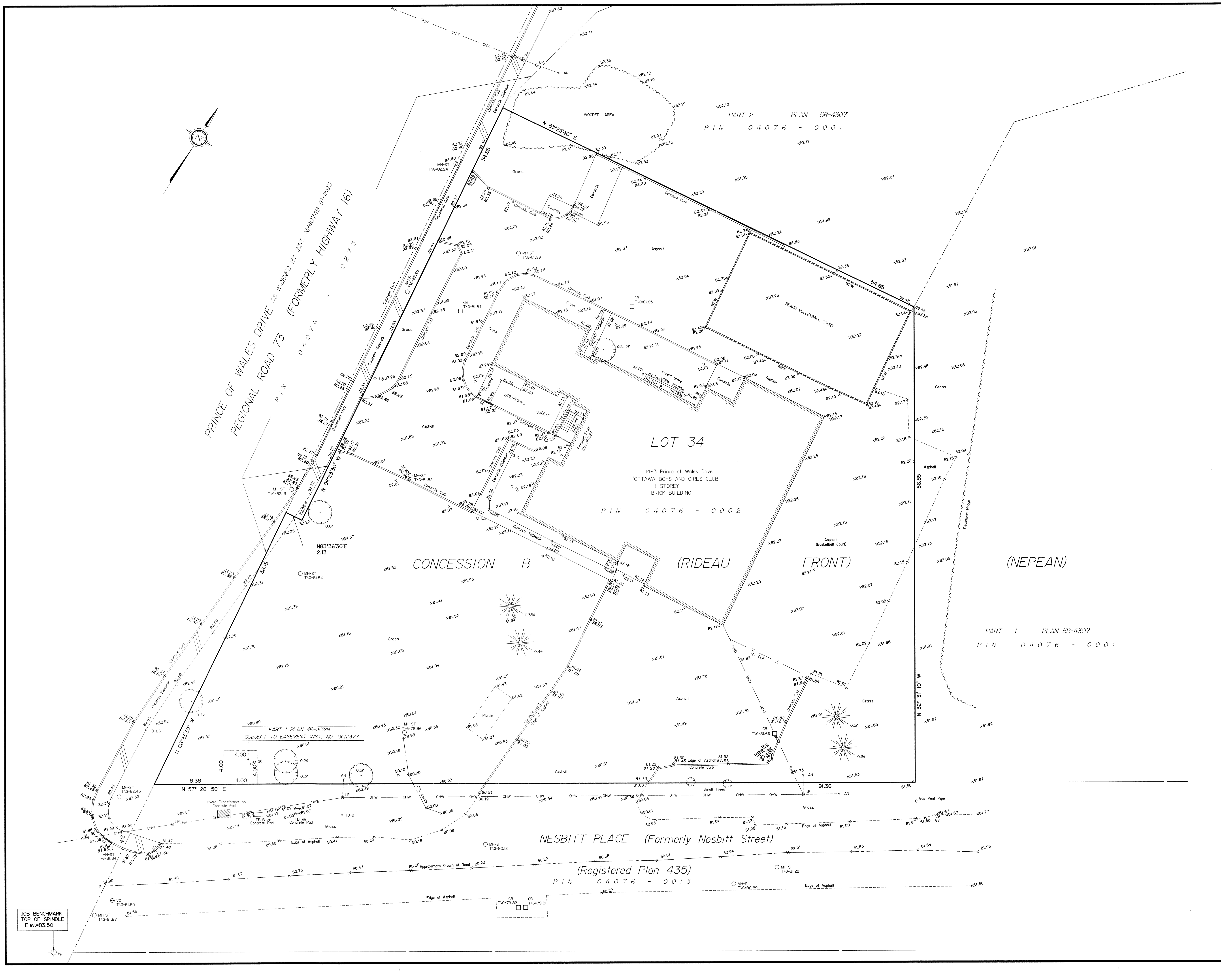
BOUNDARY INFORMATION COMPILED FROM PLANS 5R-4307 AND 4R-16329.

ELEVATION NOTES  
1. Elevations shown are geodetic and are referred to the CGVD28 geodetic datum.  
2. It is the responsibility of the user of this information to verify that the job benchmark has not been altered or disturbed and that its relative elevation and description agrees with the information shown on this drawing.

UTILITY NOTES  
1. This drawing cannot be accepted as acknowledging all of the utilities and it will be the responsibility of the user to contact the respective utility authorities for confirmation.  
2. Only visible surface utilities were located.  
3. A field location of underground plant by the pertinent utility authority is mandatory before any work involving breaking ground, probing, excavating etc.

ANNIS, O'SULLIVAN, VOLLEBEK LTD.  
14 Concourse Gate, Suite 500  
Nepean, ON, K2E 7S8  
Phone: (613) 727-0550 / Fax: (613) 727-1079  
Email: nepean@annisov.com

Ontario Land Surveyors



JOB BENCHMARK  
TOP OF SPINDLE  
Elev. 83.50