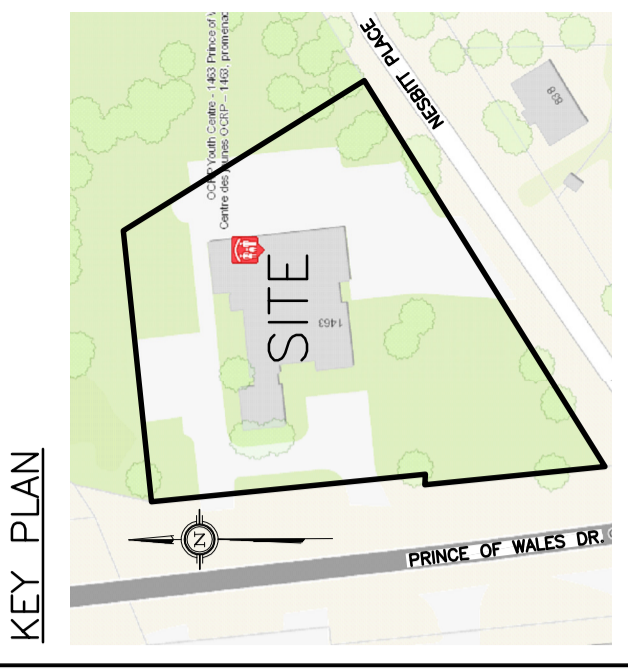


DRAWING LEGEND

- CR CATCH BASIN
- MH MANHOLE
- CB/MH CATCH BASIN/MANHOLE
- WATER SERVICE / WATERMAIN
- SANITARY SEWER
- STORM SEWER
- VALVE & VALVE BOX
- FIRE HYDRANT
- UTILITY POLE
- EXISTING GRADE ELEVATION
- PROPOSED GRADE ELEVATION
- ASPHALT PAVEMENT
- HEAVY DUTY PAVEMENT
- SLOPE OF GRADE
- EMERGENCY OVERLAND FLOW SWALE/DITCH (CENTERLINE)
- 150mm CURB / DEPRESSED CURB
- TOP OF SLOPE (1:0.3)
- BOTTOM OF SLOPE (6:0.5)
- SILT FENCE BARRIER
- PROPERTY LINE
- FIRST FLOOR ELEVATION
- UNDERSIDE OF FOOTING ELEVATION
- USF



No.	Date	REVISION
2	JUN 6-17	ISSUED FOR APPROVAL
1	MAY 12-17	ISSUED FOR REVIEW AND COORDINATION

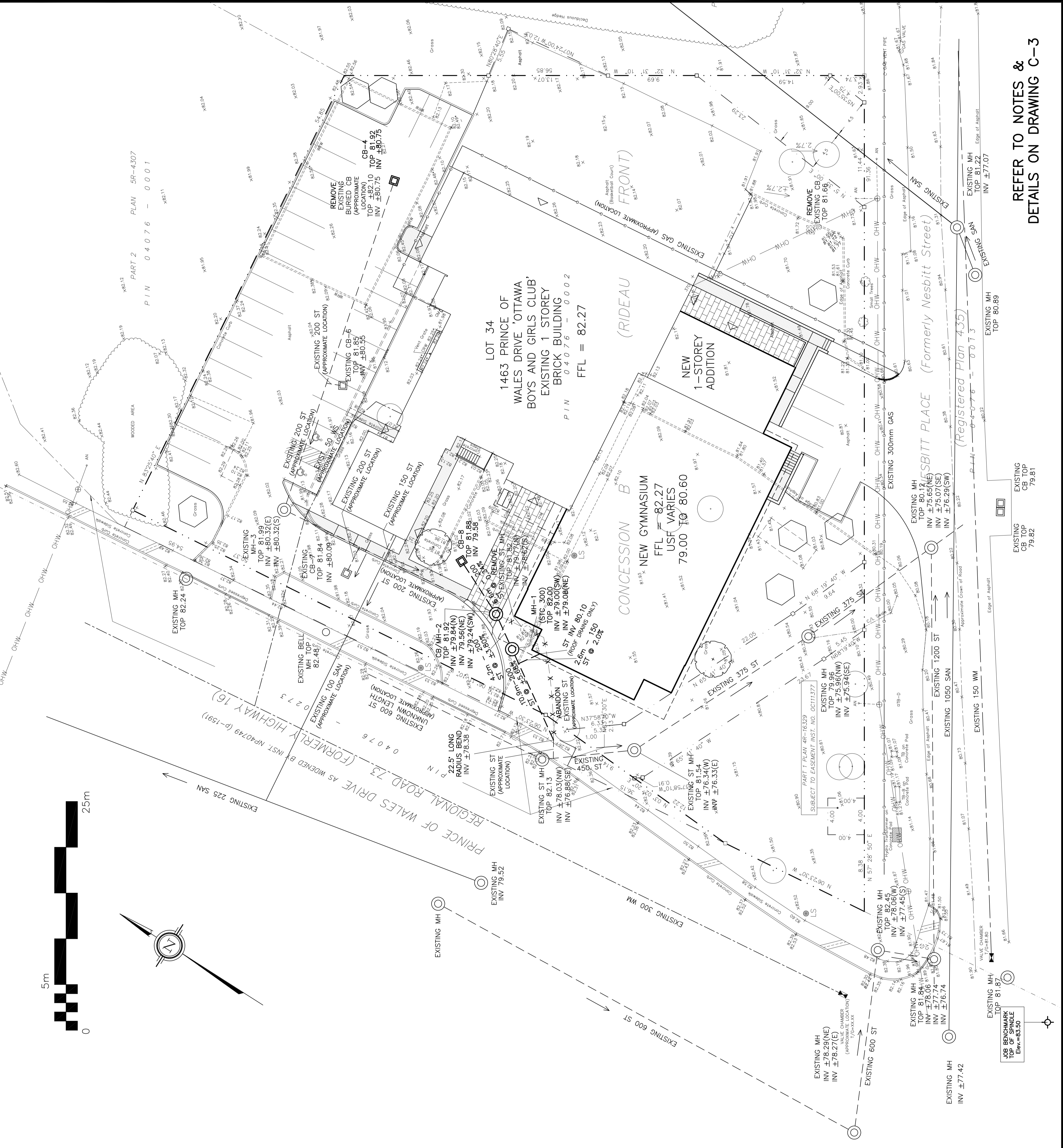
D. B. GRAY ENGINEERING INC.
 Professional Engineers
 700 Long Point Circle
 Ottawa, Ontario K1T 4E9
 Tel: 613-453-8044
 dgray@dbgray.com

**PROPOSED
BOYS AND GIRLS
RENOVATION
1463 PRINCE OF WALES DR
OTTAWA, ONTARIO**

**SITE SERVICING
PLAN**

Dimm: D.B.G.
 Hori. Scale: 1:200
 Vert. Scale: 1:20
 Date: MAR 31-17
 Job: 1706502
 Drawing No.: 16087
 Project No.: C-1
 of 4

NOT VALID UNLESS
SIGNED & DATED



**REFER TO NOTES &
DETAILS ON DRAWING C-3**

CATCHBASIN & MANHOLE SCHEDULE

REF	TOP	SIZE	TYPE	INVERT AT INLET	INVERT AT OUTLET	NOTES
MH-1	82.00	1000mm	CONCRETE	±79.80(N)	±79.00(S)	TO OPEN TO TOP & CITY OF OTTAWA STORM SEWER. REFER TO A SEWER MAIN PLAN FOR LOCATION.
CB/MH-2	81.82	1200mm	CONCRETE	±79.80(N)	±79.20(S)	TO OPEN TO TOP & CITY OF OTTAWA STORM SEWER. REFER TO A SEWER MAIN PLAN FOR LOCATION.
CB-4	81.82	800 x 800mm	CONCRETE	±80.75	-	TO OPEN TO TOP & CITY OF OTTAWA STORM SEWER. REFER TO A SEWER MAIN PLAN FOR LOCATION.
CB-8	81.88	800 x 800mm	CONCRETE	±80.75	±79.58	TO OPEN TO TOP & CITY OF OTTAWA STORM SEWER. REFER TO A SEWER MAIN PLAN FOR LOCATION.

