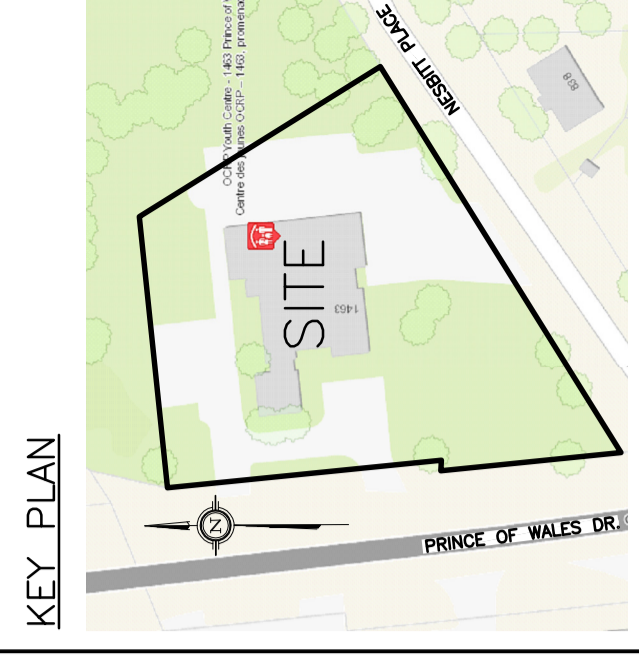


**DRAWING LEGEND**

□	CATCH BASIN
○	MANHOLE
○/MH	CATCH BASIN/MANHOLE
—	WATER SERVICE / WATERMAIN
—	SANITARY SEWER
—	STORM SEWER
—	VALVE & VALVE BOX
—	FIRE HYDRANT
—	UTILITY POLE
—	EXISTING GRADE ELEVATION
—	PROPOSED GRADE ELEVATION
—	ASPHALT PAVEMENT
—	HEAVY DUTY PAVEMENT
—	EMERGENCY OVERLAND FLOW
—	SWALE/DITCH (CENTERLINE)
—	SLOPE OF GRADE
—	EMERGENCY OVERLAND FLOW
—	150mm CURB / DEPRESSION CURB
—	TOP OF SLOPE (T.O.S)
—	BOTTOM OF SLOPE (B.O.S)
—	SILT FENCE BARRIER
—	PROPERTY LINE
—	FIRST FLOOR ELEVATION
—	UNDERSIDE OF FOOTING ELEVATION
—	USF



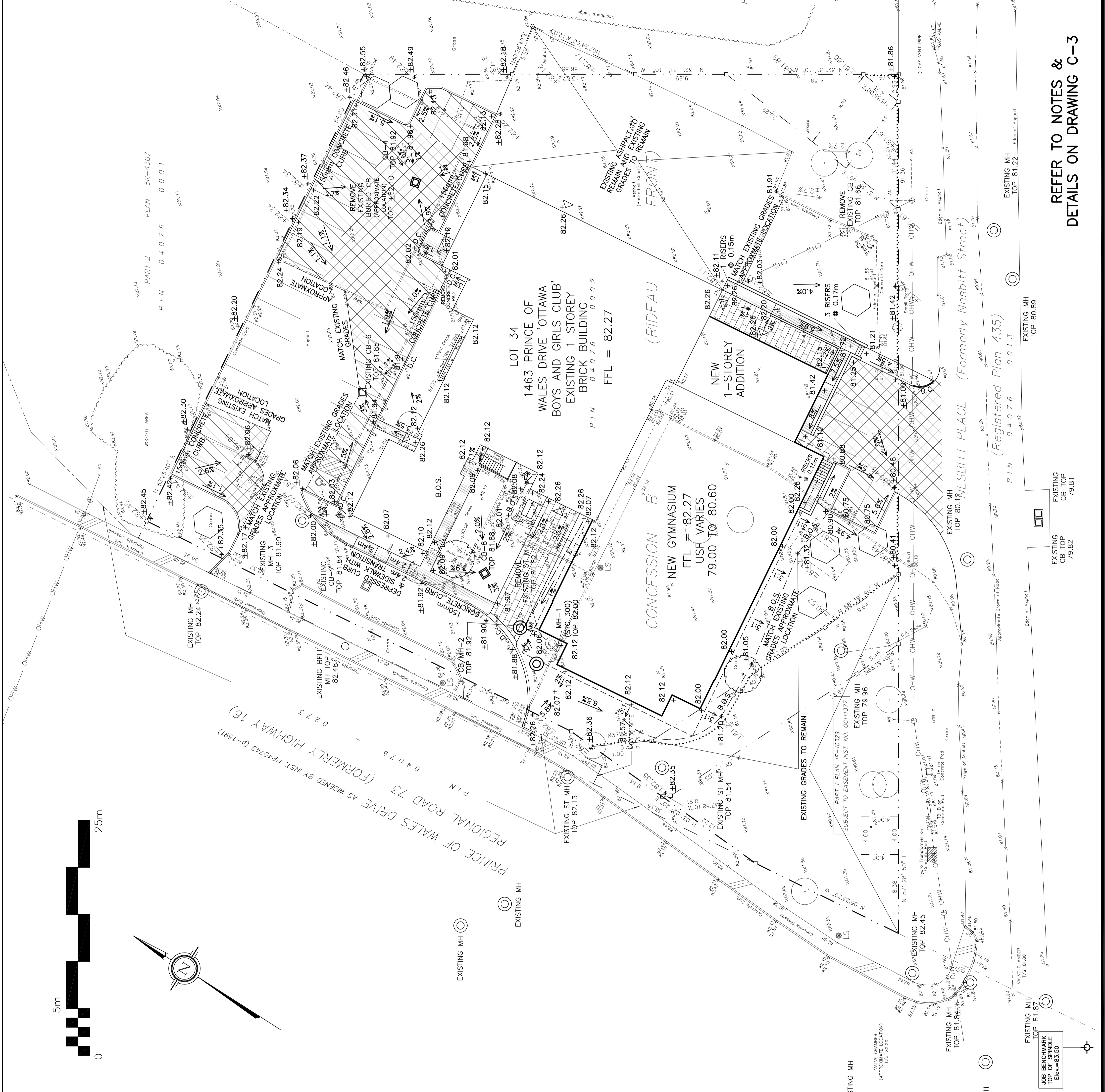
No.	Date	REVISION
2	JUN 6-17	ISSUED FOR APPROVAL
1	MAY 12-17	ISSUED FOR REVIEW AND COORDINATION

**D. B. GRAY ENGINEERING INC.**  
 700 Long Point Circle  
 Ottawa, Ontario K1T 4E9  
 Tel: 613-425-8044  
 dgray@dbgers.com

**PROPOSED  
 BOYS AND GIRLS  
 RENOVATION  
 1463 PRINCE OF WALES DR  
 OTTAWA, ONTARIO**

**GRADING AND EROSION &  
 SEDIMENT CONTROL PLAN**

Engineer's Seal  
  
 D.B. GRAY  
 JUN 6-17  
 1706502  
 PROFESSIONAL ENGINEER  
 NOT VALID UNLESS  
 SIGNED & DATED  
 Drawing No. **C-2**  
 of **4**



**REFER TO NOTES &  
 DETAILS ON DRAWING C-3**