

METRIC
DISTANCES AND COORDINATES SHOWN ON THIS PLAN ARE IN METRES
AND CAN BE CONVERTED TO FEET BY DIVIDING BY 0.3048

SCHEDULE			
PART	LOT	REG'D PLAN	PIN
1	PART OF 71	382	PART OF 04628-0127
2	PART OF 69, 70 & 71		

I REQUIRE THIS PLAN TO BE DEPOSITED UNDER THE LAND TITLES ACT.

PLAN 4R-29465
RECEIVED AND DEPOSITED

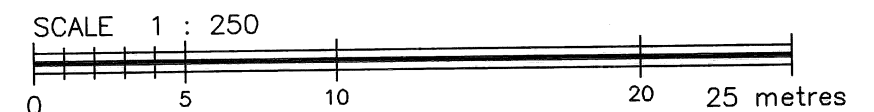
DATE April 13, 2016

DATE April 14 2016

DAVID W. WOODLAND, O.L.S.

B. MacMaster
REPRESENTATIVE FOR THE LAND TITLES DIVISION OF OTTAWA - CARLETON (N° 4)

**PLAN OF SURVEY OF
PART OF LOTS 69, 70, & 71
REGISTERED PLAN 382
CITY OF OTTAWA**



FAIRHALL, MOFFATT & WOODLAND LIMITED
ONTARIO LAND SURVEYORS

NOTES

- BEARINGS HEREON ARE GRID BEARINGS AND ARE DERIVED FROM NCC HORIZONTAL CONTROL MONUMENTS 019710637 (N 5022465.812, E 365416.840) AND 019861625 (N 5022141.837, E 363270.732) AND ARE REFERRED TO THE CENTRAL MERIDIAN 76°30'W LONGITUDE, ZONE 9 OF THE 3° M.T.M. ONTARIO COORDINATE SYSTEM (NAD 83).
- DISTANCES ARE GROUND AND CAN BE CONVERTED TO GRID BY MULTIPLYING BY THE COMBINED SCALE FACTOR 0.999937..

LEGEND

- - SURVEY MONUMENT SET (1152) - J. E. KIHLE, O.L.S.
- - SURVEY MONUMENT FOUND (AOG) - ANNIS, O'SULLIVAN, VOLLEBEKK LTD., O.L.S.
- SIB - STANDARD IRON BAR (NCC) - NATIONAL CAPITAL COMMISSION
- IB - IRON BAR (SU) - SOURCE UNKNOWN
- CP - CONCRETE PIN (WIT) - WITNESS
- CC - CUT CROSS PIN - PROPERTY IDENTIFIER NUMBER
- PB - PLASTIC BAR
- (P) - PLAN 4R-12281
- (P1) - PLAN 5R-11115
- (S) - SET
- (M) - MEASURED
- (857) - FAIRHALL, MOFFATT & WOODLAND LIMITED, O.L.S. (REF. 155-A (RF) NP)

SURVEYOR'S CERTIFICATE

- I CERTIFY THAT:
- THIS SURVEY AND PLAN ARE CORRECT AND IN ACCORDANCE WITH THE SURVEYS ACT, THE SURVEYORS ACT, THE LAND TITLES ACT AND THE REGULATIONS MADE UNDER THEM.
 - THE SURVEY WAS COMPLETED ON APRIL 07, 2016.

April 13, 2016
DATE

DAVID W. WOODLAND
ONTARIO LAND SURVEYOR

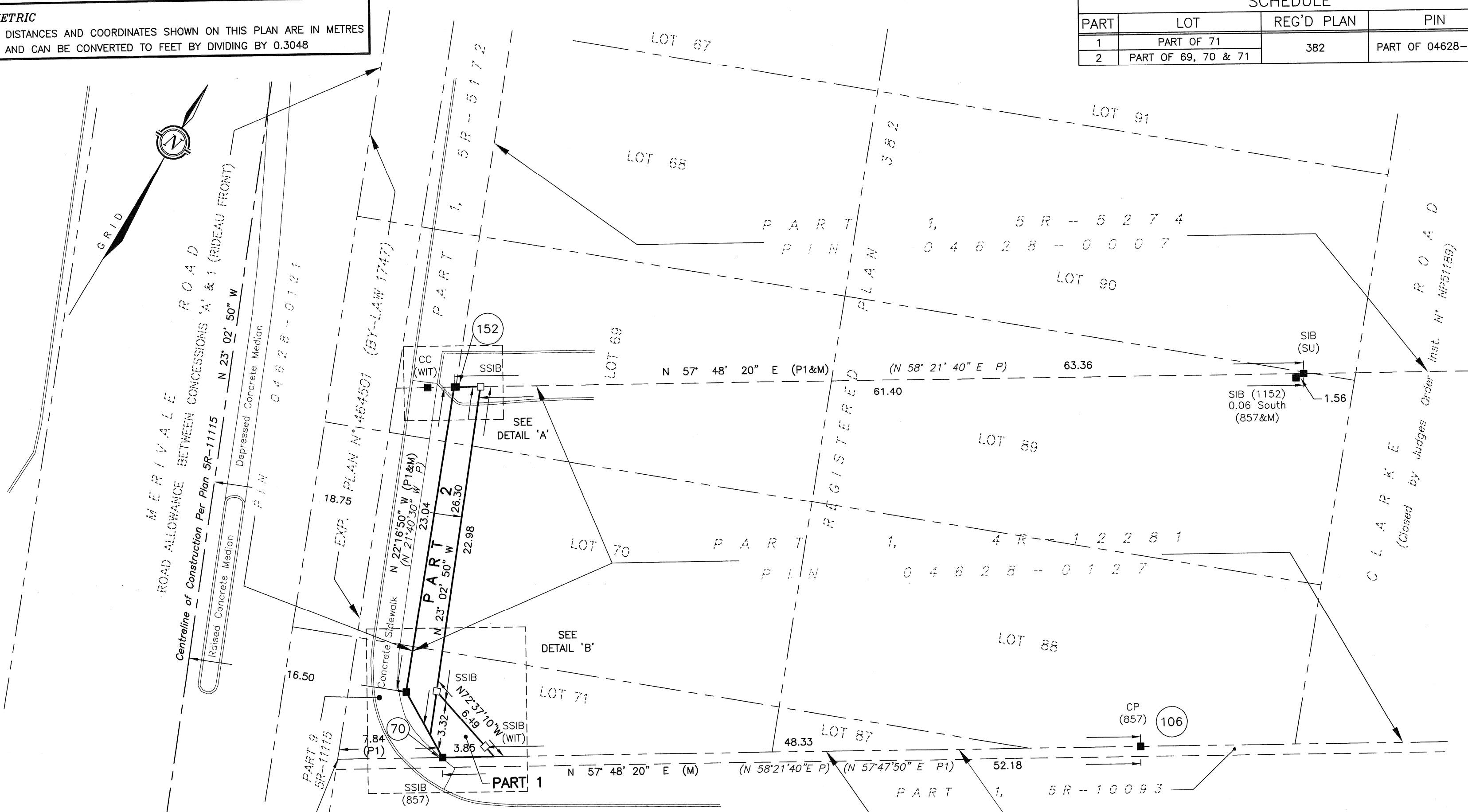
Fairhall Moffatt & Woodland LIMITED ONTARIO LAND SURVEYORS Ottawa Surveying and Land Information Services 100-600 TERRY FOX DRIVE, KANATA, ONTARIO K2L 4B6 TEL: (613) 591-2580 FAX: (613) 591-1495 www.fmw.on.ca	JOB No. W 1 5 1 0 0
	E 365759, N 5021849
REFERENCE No. 155 (c) - A (RF) NP	S:\jobs\w15100\DWG 2016-04-13 R0151W.DWG (nj)

COORDINATES WERE DERIVED FROM NCC HORIZONTAL CONTROL MONUMENTS 019710637 (N 5022465.812, E 365416.840) AND 019861625 (N 5022141.837, E 363270.732) AND ARE REFERRED TO THE CENTRAL MERIDIAN 76°30'W LONGITUDE, ZONE 9 OF THE 3° M.T.M. ONTARIO COORDINATE SYSTEM (NAD 83).

COORDINATES HAVE BEEN DETERMINED TO AN URBAN ACCURACY IN ACCORDANCE WITH SECTION 14(2) OF O.REG 216/10.

POINT ID	NORTHING	EASTING
70	5021800.597	365695.758
71	5021803.358	365690.902
106	5021828.396	365739.911
152	5021824.678	365682.171

COORDINATES CANNOT IN THEMSELVES BE USED TO RE-ESTABLISH CORNERS OR BOUNDARIES SHOWN ON THIS PLAN.



Northwest Corner of Jamie Avenue, Registered Plan 564563

