

STAMP:

CLIENT:

ZONING INFORMATION - TM [2224] H(14.5)

	REQUIRED	PROVIDED
MIN. LOT WIDTH	No Minimum	11.255 m
MIN. LOT AREA	No Minimum	403 sq.m.
MAX. BUILDING HEIGHT, from existing average grade	14.5m	11.4m
MAX. FRONT YARD SETBACK	2m	1.5m
MIN. REAR YARD SETBACK	No Minimum	1.209m
MIN. CORNER YARD SETBACK	3m	5.026m
MIN. SIDEYARD SETBACK	No Minimum	2.068m
LOT DEPTH	No Minimum	15.159m
AMENTIY AREA IN REAR YARD, 14 UNITS	8 x 15sq.m. + 6 x 8sq.m.	168m2
PARKING SPACES	1	1
BICYCLE PARKING SPACES	7	7

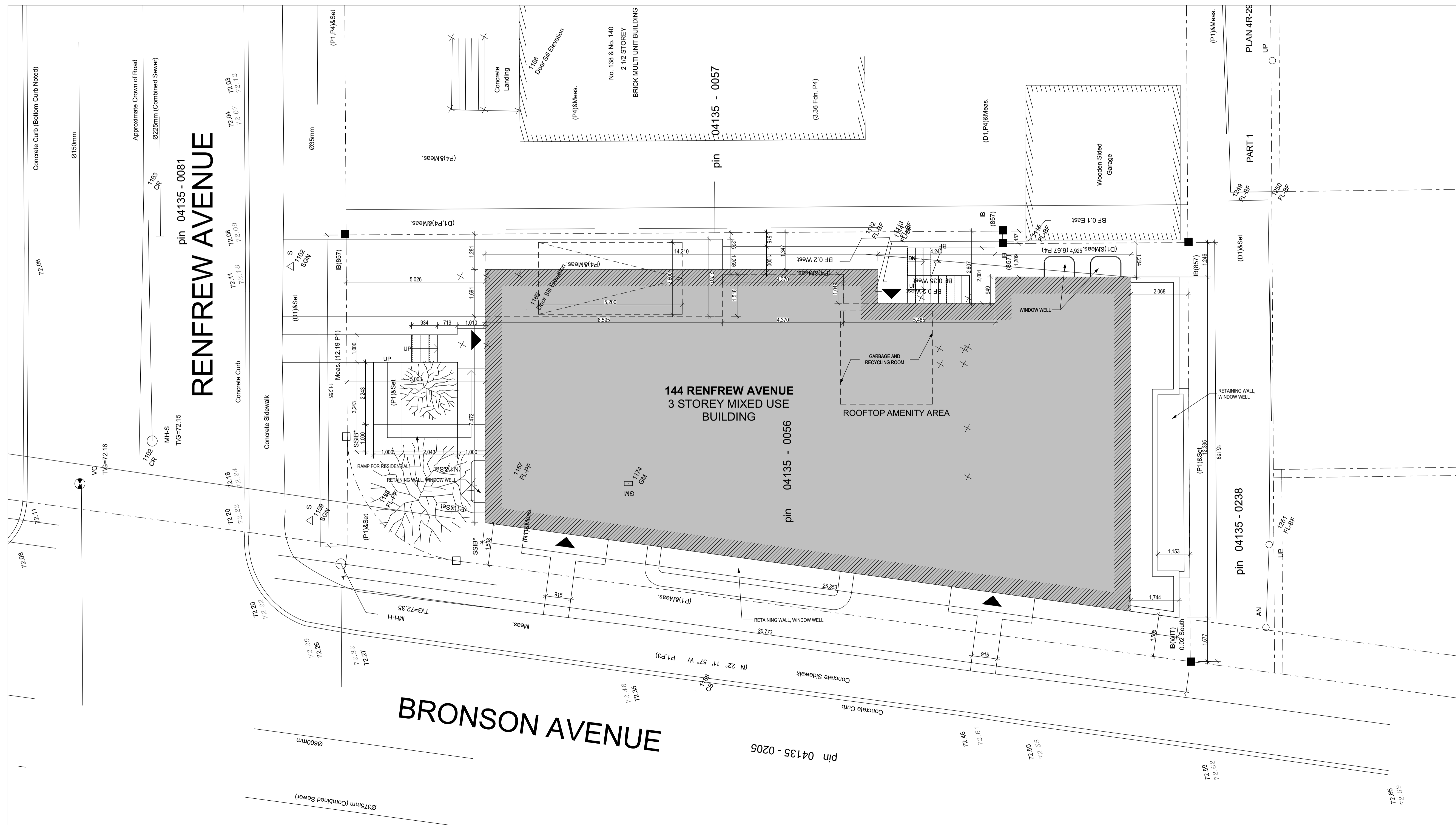
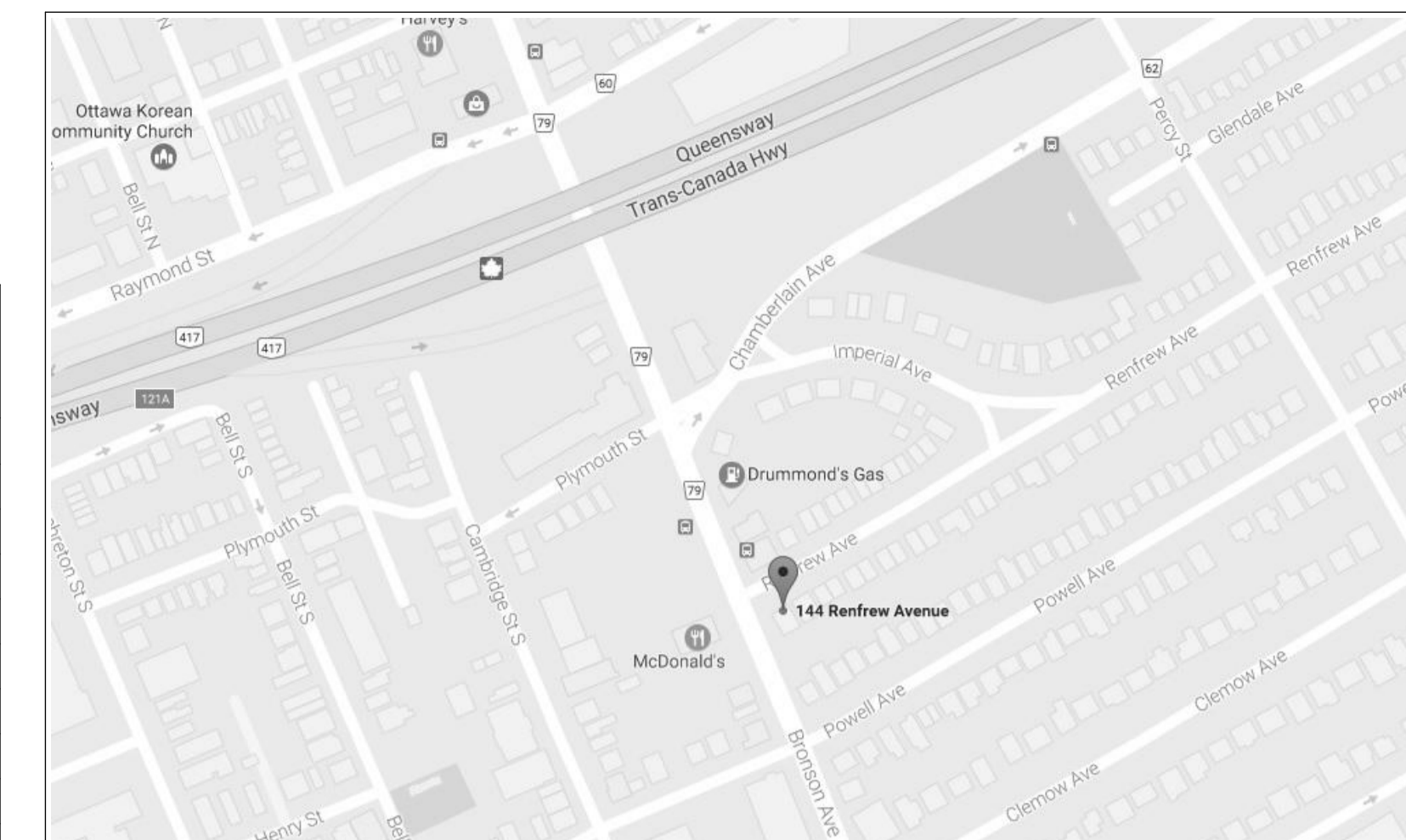
GROSS FLOOR AREA:

BASEMENT:	230.4 m ²
GROUND:	249.6 m ²
SECOND:	244.4 m ²
THIRD:	244.4 m ²
TOTAL:	968.8 m²

WASTE COLLECTION NOTE:

1. THIS SITE DOES NOT QUALIFY FOR PUBLIC WASTE CONTAINER COLLECTION. 4x360L GARBAGE, 2X360L FIBRE, 1X360L RECYCLING 1X240L ORGANIC BINS WILL BE PROVIDED IN THE BUILDING AT GROUND FLOOR ACCESSED BY THE INTERLOCKED WALKWAY. WASTE AND RECYCLING WILL BE PROVIDED BY A PRIVATE CONTRACTOR. THE WASTE WILL BE PICKED UP ON THE SCHEDULED COLLECTION DATE.

2 CONTEXT PLAN
A-001 SCALE = N.T.S.



08	ISSUED FOR SITE PLAN CONTROL	2017-04-26
07	ISSUED FOR CITY REVIEW	2017-03-17
06	ISSUED FOR COORDINATION	2017-03-13

DRAWINGS COPYRIGHT ROBERTSON MARTIN ARCHITECTS.
DO NOT COPY. DO NOT SCALE DRAWINGS.
ALL DIMENSIONS TO BE CHECKED AND VERIFIED

NORTH:

PROJECT:

MIXED-USE BUILDING

144 RENFREW AVENUE OTTAWA, ONTARIO
DRAWING:

SITE PLAN

DESIGNED BY: APPROVED BY:

DRAWN BY:

DATE: OCTOBER 2016 SCALE: AS SHOWN

RMA PROJECT NUMBER SHEET NUMBER:

16031 A-001