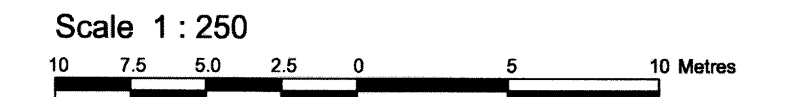


**BLOCK 52
REGISTERED PLAN 4M-1049
AND
PART OF LOT 1
CONCESSION 9
Geographic Township of Cumberland
CITY OF OTTAWA**
Surveyed by Annis, O'Sullivan, Vollebek Ltd.



Metric
DISTANCES SHOWN ON THIS PLAN ARE IN METRES AND
CAN BE CONVERTED TO FEET BY DIVIDING BY 0.3048

Surveyor's Certificate

I CERTIFY THAT:
1. This survey and plan are correct and in accordance with the Surveys Act
and the Surveyors Act and the Land Titles Act and the regulations
made under them.
2. The survey was completed on the 18th day of January, 2017

January 19/2017 *Edward M. Lancaster*
Date Edward M. Lancaster
Ontario Land Surveyor

Notes & Legend

- | Denotes | |
|---------|----------------------------------|
| — | Survey Monument Planted |
| — | Survey Monument Found |
| SIB | Standard Iron Bar |
| SSIB | Short Standard Iron Bar |
| IB | Iron Bar |
| (WIT) | Witness |
| Meas. | Measured |
| (AOG) | Annis, O'Sullivan, Vollebek Ltd. |
| (P) | Registered Plan 4M-1049 |
| (P1) | Plan 4R-28030 |
| (P2) | Plan 4R-27408 |
| (P3) | Plan 4R-18298 |
| (P4) | Plan 4R-18629 |
| (P5) | (AOG) Plan July 16, 2003 |
| (P6) | (AOG) Plan July 12, 2003 |
| — | Overhead Wires |
| — | Utility Pole |
| — | Anchor |
| — | Light Standard |
| — | Monitoring Well |
| — | Fire Hydrant |
| — | Maintenance Hole (Unidentified) |
| — | Ball Terminal Box |
| — | Traffic Terminal Box |
| — | Unidentified Terminal Box |
| — | Gas Valve |
| — | Gas Meter |
| — | Catch Basin |
| — | Ditch Inlet |
| — | Handhole |
| — | Traffic Signal Post |
| — | Sign |
| — | Chain Link Fence |
| — | Board Fence |
| — | Contourline |
| — | Diameter |
| — | Location of Elevations |
| — | Top of Concrete Curb Elevation |
| — | Property Line |
| — | Deciduous Tree |
| — | Turning Line |

Bearings are grid bearings derived from the northern limit of Part 1
Plan 4R-28030 shown to be N67°13'05"E thereon and are referred to
the Central Meridian of MTM Zone 9 (78°30' West Longitude)
NAD-83 (original).

SITE AREA = 6092.7 m²

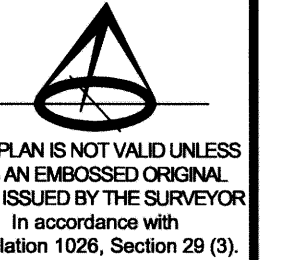
ELEVATION NOTES

- Elevations shown are geodetic and are referred to the CGVD28 geodetic datum.
- It is the responsibility of the user of this information to verify that the job benchmark has not been altered or disturbed and that its relative elevation and description agrees with the information shown on this drawing.

UTILITY NOTES

- This drawing cannot be accepted as acknowledging all of the utilities and it will be the responsibility of the user to contact the respective utility authorities for confirmation.
- Only visible surface utilities were located.
- A field location of underground plant by the pertinent utility authority is mandatory before any work involving breaking ground, probing, excavating etc.

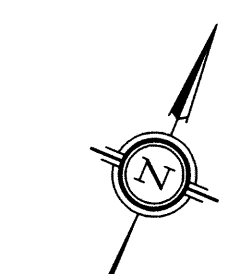
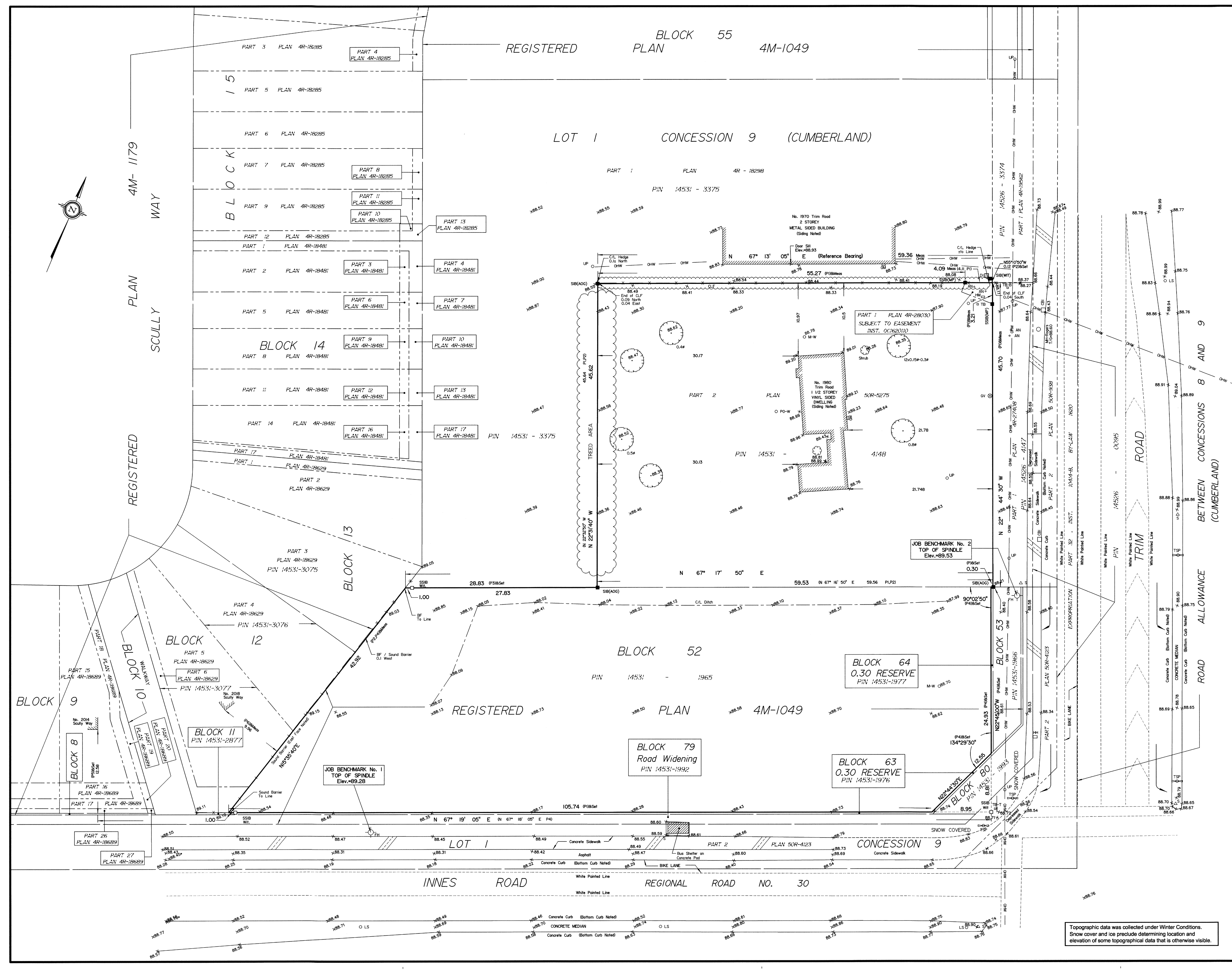
ASSOCIATION OF ONTARIO
LAND SURVEYORS
PLAN SUBMISSION FORM
2000086



THIS PLAN IS NOT VALID UNLESS
IT IS AN EMBOSSED ORIGINAL
COPY ISSUED BY THE SURVEYOR
In accordance with
Regulation 1026, Section 29 (3).

Topographic data was collected under Winter Conditions.
Snow cover and ice preclude determining location and
elevation of some topographical data that is otherwise visible.

© Annis, O'Sullivan, Vollebek Ltd. 2017. THIS PLAN IS PROTECTED BY COPYRIGHT.
ANNIS, O'SULLIVAN, VOLLEBEK LTD.
14 Concourse Gate, Suite 500
Nepean, Ont. K2E 7S6
Phone: (613) 727-0850 / Fax: (613) 727-1079
Email: Annis@anniso.com
Lic. No. 18865-16 Clarence Bk. 52 4M-1049 T.F.



4M-1179
WAY
SCULLY

REGISTERED

REGISTERED
BLOCK 55
PLAN 4M-1049

LOT 1 CONCESSION 9 (CUMBERLAND)

BLOCK 52
PLAN 4M-1049

BLOCK 79
Road Widening
PIN 14531-1992

BLOCK 63
0.30 RESERVE
PIN 14531-1976

BLOCK 64
0.30 RESERVE
PIN 14531-1977

BLOCK 13

BLOCK 12

BLOCK 11
PIN 14531-2877

BLOCK 9

BLOCK 8

BLOCK 10

INNES ROAD
REGIONAL ROAD NO. 30

ROAD
TRIM

ROAD
ALLOWANCE

BETWEEN CONCESSIONS 8 AND 9
(CUMBERLAND)