

NOTES

- DO NOT SCALE DRAWING
- VERIFY LOCATIONS AND ELEVATIONS OF EXISTING SERVICES PRIOR TO CONSTRUCTION. CONTRACTOR IS RESPONSIBLE TO OBTAIN LOCATES
- CONTRACTOR IS TO COMPLY WITH THE CITY OF OTTAWA REQUIREMENTS FOR TRAFFIC CONTROL WHEN WORKING ON MUNICIPAL ROAD.
- ALL WORK AND MATERIALS SHALL BE IN ACCORDANCE WITH CITY OF OTTAWA AND/OR OPS STANDARDS AND SPECIFICATIONS
- NEW SANITARY MANHOLES TO BE 1200 mm AS PER OPSD 701.010
- NEW STORM MANHOLE, CBMH AND CBMH3 TO BE 1200 mm AS PER OPSD 701.011
- NEW CBMH TO BE 1500 mm AS PER OPSD 701.011
- SANITARY MANHOLE BENCHING AS PER OPSD 701.021
- SANITARY MANHOLE COVER AS PER CITY STANDARD DRAWING S24
- NEW CATCH BASINS ARE STANDARD SIZE 600 mm X 600 mm AS PER OPSD 705.010
- LANDSCAPE CATCH BASINS (LCB) AS PER CITY STANDARD DRAWINGS S30 AND S31
- CATCH BASIN COVER AS PER CITY STANDARD DRAWING S19.1
- CBMH COVER AS PER CITY STANDARD DRAWING S19
- STORM MANHOLES AND CBMH3 TO BE CONSTRUCTED WITH 300 mm SLABS, CB3 WITH 600 mm SLABS
- PROVIDE 75 mm THICK RIGID STYROFOAM INSULATION FOR ALL STORM SEWERS
- NEW BARRIER CURB AS PER CITY OF OTTAWA STANDARD DRAWING SCL11
- NEW SEWERS TO BE INSPECTED USING CCTV AS REQUIRED BY THE CITY
- CONTRACTOR IS RESPONSIBLE TO OBTAIN ALL NECESSARY PERMITS PRIOR TO CONSTRUCTION
- REFER TO MECHANICAL DRAWINGS FOR INTERNAL CONNECTIONS
- REFER TO ARCHITECT'S PLANS FOR BUILDING DIMENSIONS AND SITE LAYOUT. ALL CONSTRUCTION SHALL BE COMPLETED PRIOR TO COMMENCEMENT OF CONSTRUCTION
- REFER TO ARCHITECT'S PLANS FOR BUILDING DIMENSIONS AND SITE LAYOUT. ALL CONSTRUCTION SHALL BE COMPLETED PRIOR TO COMMENCEMENT OF CONSTRUCTION
- REFER TO MECHANICAL DRAWINGS FOR INTERNAL CONNECTIONS
- REFER TO MECHANICAL DRAWINGS FOR INTERNAL CONNECTIONS
- THIS PLAN SHOULD BE READ IN CONJUNCTION WITH THE SITE SERVING AND SANI BRIEF PREPARED BY CAPITAL ENGINEERING GROUP LTD AND THE GEOTECHNICAL REPORT PREPARED BY HOLE CHEWNER ENGINEERING

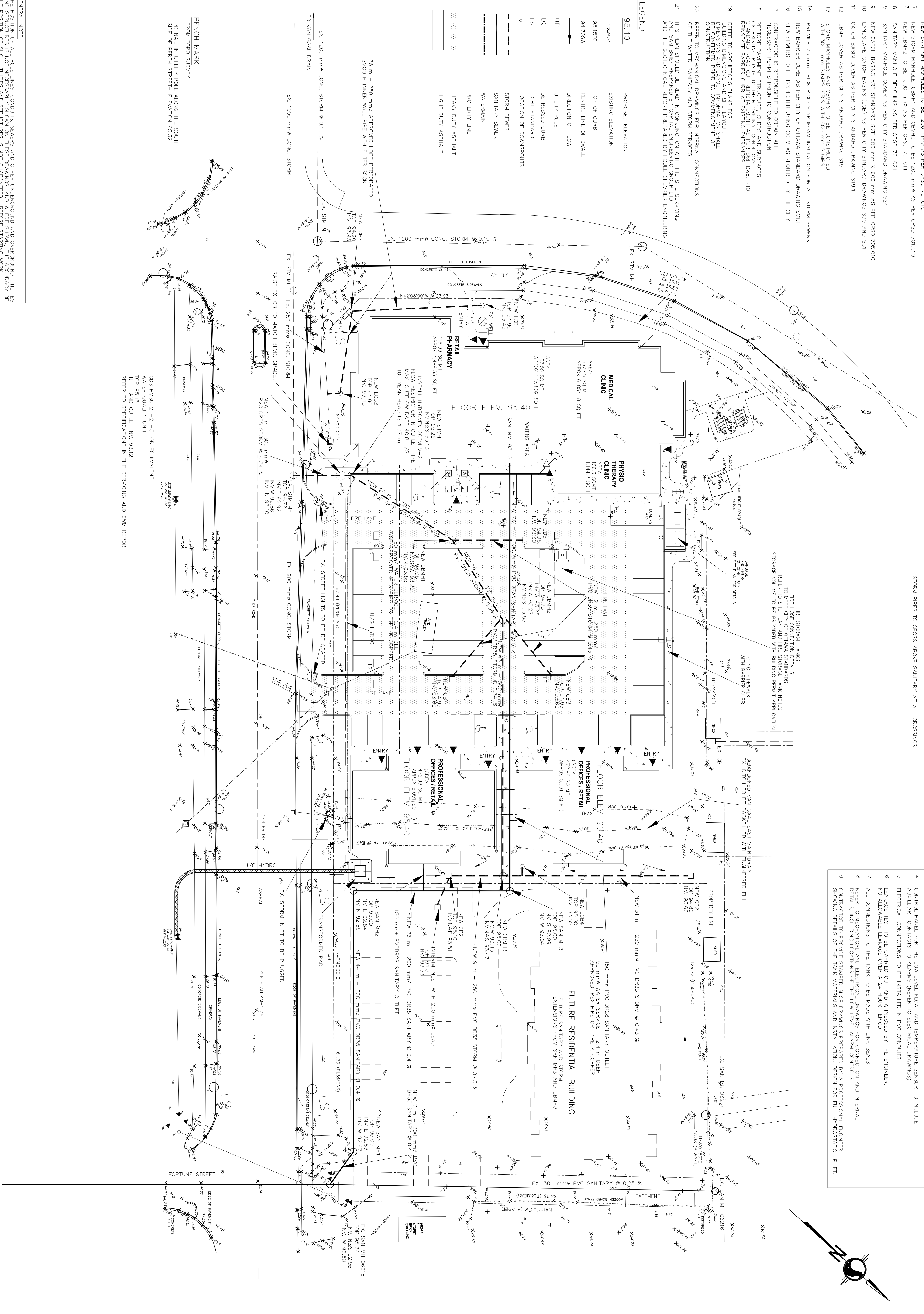
LEGEND

- 95.40 PROPOSED ELEVATION
- X449 EXISTING ELEVATION
- 95.151C TOP OF CURB
- 94.705W CENTRE LINE OF SHALE
- UP DIRECTION OF FLOW
- UTILITY POLE
- DC DEPRESSED CURB
- LS LIGHT STANDARD
- STORM SEWERS
- SANITARY SEWER
- WATERMAIN
- PROPERTY LINE
- HEAVY DUTY ASPHALT
- LIGHT DUTY ASPHALT

OUTLET OR FROM FRONT DOWNSPOUTS (WHERE THESE ARE AS SIDEWALK) FLOW TO BE PERFORMED ACROSS THE SIDEWALK TO EDGE OF CURB USE 100 mm DIAMETER PVC PIPES COVER WITH CONCRETE TO COMPLETE THE SIDEWALK INSTALL TRACER WIRES IN THE DOWNSPOUTS AND OUTLET PIPES, AND CONNECT TO BUILDING ELECTRICAL SYSTEM (REFER TO ELECTRICAL DRAWINGS)

STORM PIPES TO CROSS ABOVE SANITARY AT ALL CROSSINGS

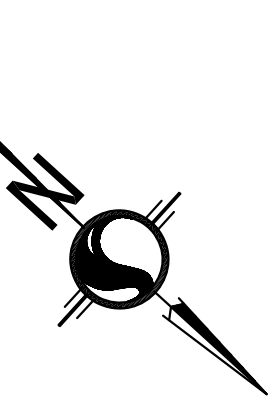
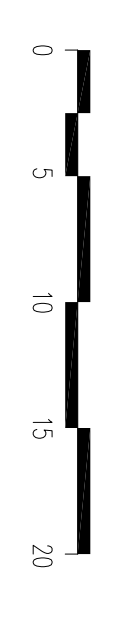
- FIRE STORAGE TANK NOTES**
- WATER CHUTE, DRAIN PIPE AND SIGNAGE MUST MEET CITY OF OTTAWA REQUIREMENTS
 - REFER TO CITY OF OTTAWA RURAL WATER TECHNICAL DRAWINGS
 - TANK TO BE EQUIPPED WITH LOW LEVEL FLOAT CONTROL, MODEL TANK-OIL-LUW BY SIE PHOENIX OR EQUIVALENT. FLOAT TO BE SET TO ACTIVATE IF THE WATER LEVEL DROPS BY 150 mm ON WORK.
 - TANK TO BE EQUIPPED WITH TEMPERATURE SENSOR, ENVIRONMENTAL MODEL EA 200, OR EQUIVALENT. ALARM TO BE SET AT 11.0°C FOR AMBIENT TEMPERATURE AND 7°C FOR RESERVOIR LOW TEMPERATURE
 - CONTROL PANEL FOR THE LOW LEVEL FLOAT AND TEMPERATURE SENSOR TO INCLUDE
 - ELECTRICAL CONNECTIONS TO BE INSTALLED IN PVC CONDUITS
 - LEAKAGE TEST TO BE CARRIED OUT AND WITNESSED BY THE ENGINEER. NO ALLOWABLE LEAKAGE OVER A 24 HOUR PERIOD
 - ALL CONNECTIONS TO THE TANK TO BE MADE WITH LINK SEALS
 - REFER TO MECHANICAL AND ELECTRICAL DRAWINGS FOR CONNECTION AND INTERNAL DETAILS, INCLUDING LOCATIONS OF THE LOW LEVEL ALARM CONTACTS
 - CONTRACTOR TO PROVIDE STAMPED SHOP DRAWINGS PREPARED BY A PROFESSIONAL ENGINEER SHOWING DETAILS OF THE TANK MATERIALS AND INSTALLATION. DESIGN FOR FULL HYDROSTATIC UPLIFT.



BENCH MARK
FROM TOP SURVEY
PK NAIL IN UTILITY POLE ALONG THE SOUTH SIDE OF PERTH STREET - ELEVATION 95.32

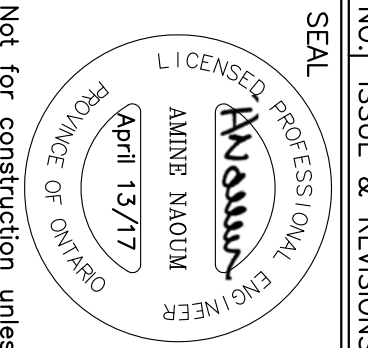
CDS PMSU 20-20-5, OR EQUIVALENT
WATER QUALITY UNIT
TOP 95.15 INLET INV. 93.12
REFER TO SPECIFICATIONS IN THE SERVING AND SANI REPORT

GENERAL NOTE
ALL POLE LINES, CONDUITS, SEWERS AND OTHER UNDERGROUND AND OVERGROUND UTILITIES AND STRUCTURES IS NOT NECESSARILY SHOWN ON THESE DRAWINGS, AND WHERE SHOWN, THE ACCURACY OF THE POSITION OF SUCH UTILITIES AND STRUCTURES IS NOT GUARANTEED. BEFORE STARTING WORK, OBTAIN THE EXACT LOCATION OF ALL SUCH UTILITIES AND STRUCTURES AND ASSUME ALL LIABILITY FOR DAMAGES TO THEM

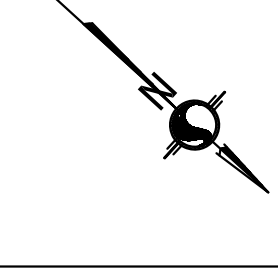


Capital Engineering
Group Ltd
Municipal / Land Development

110 Dosselle Way
Ottawa, Ontario K1G 4S5
T: (613) 739-0776 F: (613) 739-7302
E: cegi@rogers.com



Not for construction unless
SEALED and SIGNED.



PROJECT	RICHMOND OAKS MEDICAL CENTRE
DRAWING	SERVICING PLAN
PROJECT NO.	1715
DRAWING NO.	G1
SCALE	1 : 300
DRAWN	ANDREW
CHECKED	AN
REVISION NO.	

6265 Perth Street
Village of Richmond, Ontario