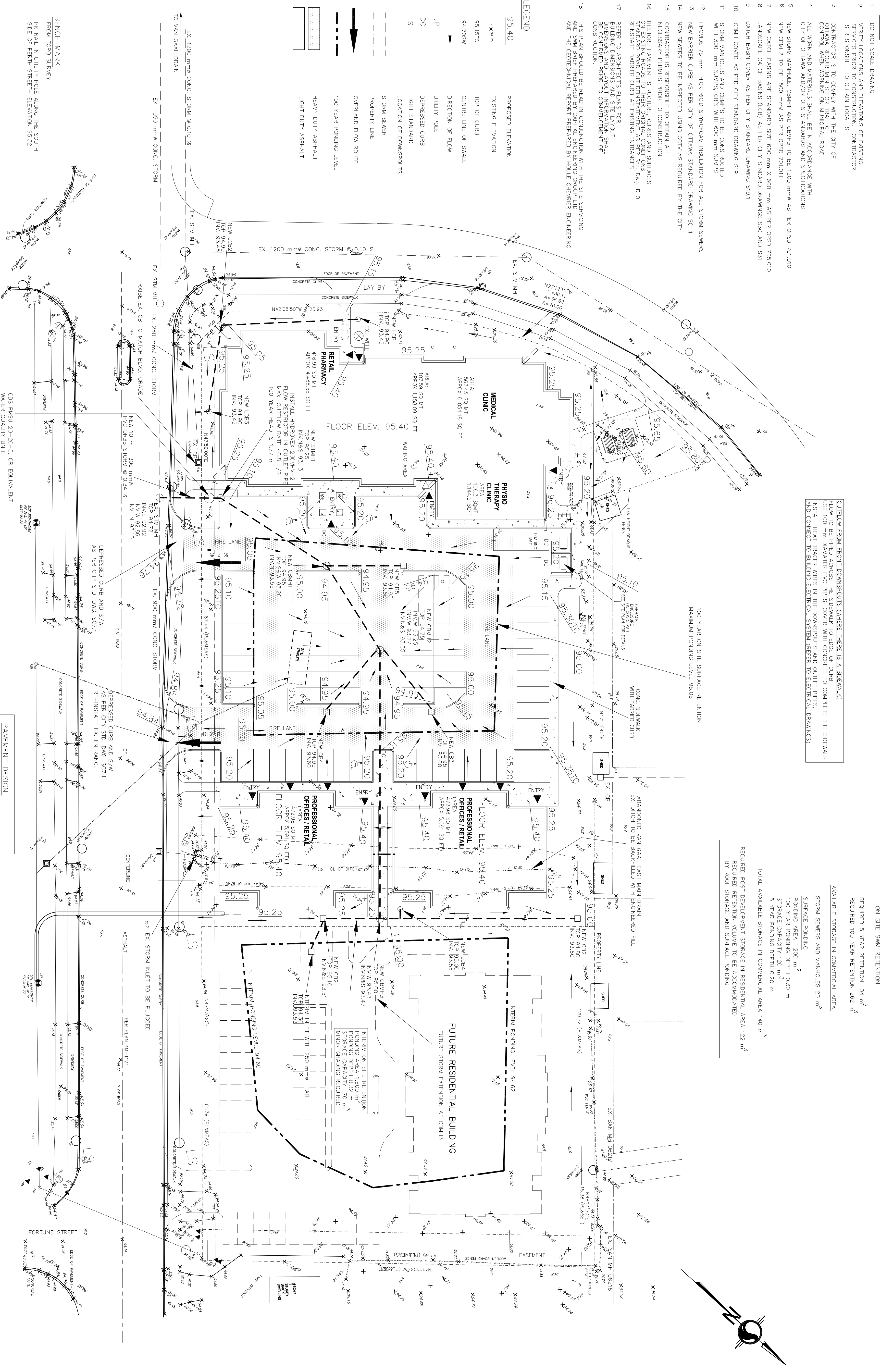


NOTES

- 1 DO NOT SCALE DRAWING
- 2 VERIFY LOCATIONS AND ELEVATIONS OF EXISTING SERVICES PRIOR TO CONSTRUCTION. CONTRACTOR IS RESPONSIBLE TO OBTAIN LOCATIONS
- 3 CONTRACTOR IS TO COMPLY WITH THE CITY OF OTTAWA REQUIREMENTS FOR MANHOLE ROAD
- 4 ALL WORK AND MATERIALS SHALL BE IN ACCORDANCE WITH CITY OF OTTAWA AND/OR OPS STANDARDS AND SPECIFICATIONS
- 5 NEW STORM MANHOLE, GBM1 AND GBM3 TO BE 1200 mm AS PER OPS20 701.011
- 6 NEW GBM2 TO BE 1500 mm AS PER OPS20 701.011
- 7 NEW CATCH BASINS ARE STANDARD SIZE 600 mm X 600 mm AS PER OPS20 705.010
- 8 LANDSCAPE CATCH BASINS (LCB) AS PER CITY STANDARD DRAWINGS S20 AND S31
- 9 CATCH BASIN COVER AS PER CITY STANDARD DRAWING S19.1
- 10 GBM1 COVER AS PER CITY STANDARD DRAWING S19
- 11 STORM MANHOLES AND GBM3S TO BE CONSTRUCTED WITH 300 mm SWMS, GBM1 WITH 600 mm SWMS
- 12 PROVIDE 75 mm THICK RIGID STYROFOAM INSULATION FOR ALL STORM SEWERS
- 13 NEW BARBER CURB AS PER CITY OF OTTAWA STANDARD DRAWING SC7.1
- 14 NEW SEWERS TO BE INSPECTED USING CCTV AS REQUIRED BY THE CITY
- 15 CONTRACTOR IS RESPONSIBLE TO OBTAIN ALL NECESSARY PERMITS PRIOR TO CONSTRUCTION
- 16 RESTORE PAVEMENT STRUCTURE, CURBS AND SURFACES STANDARD ROAD CUT RESTAURATION AS PER SID 044, R10 REINSTATE BARBER CURB AT EXISTING ENTRANCES
- 17 REFER TO ARCHITECT'S PLANS FOR BUILDING DIMENSIONS AND SITE LAYOUT. DIMENSIONS AND LAYOUT INFORMATION SHALL BE CONSIDERED SUPERIOR TO CONSTRUCTION
- 18 THIS PLAN SHOULD BE READ IN CONJUNCTION WITH THE SITE SERVICES AND SWM BRIEF PREPARED BY CAPITAL ENGINEERING GROUP LTD AND THE GEOTECHNICAL REPORT PREPARED BY HOLE CHEWMER ENGINEERING

LEGEND

- 95.40 PROPOSED ELEVATION
- X44.49 EXISTING ELEVATION
- 95.151C TOP OF CURB
- 94.705W CENTRE LINE OF SWALE
- DIRECTION OF FLOW
- UP UTILITY POLE
- DC DEPRESSED CURB
- LS LIGHT STANDARD
- LOCATION OF DOWNPOUTS
- STORM SEWER
- PROPERTY LINE
- OVERLAND FLOW ROUTE
- 100 YEAR FLOODING LEVEL
- HEAVY DUTY ASPHALT
- LIGHT DUTY ASPHALT



OUTFLOW FROM FRONT DOWNPOUTS (WHERE THERE IS A SIDEWALK) FLOW TO BE PIPED ACROSS THE SIDEWALK TO EDGE OF CURB USE 100 mm DIAMETER PVC PIPES COVER WITH CONCRETE TO COMPLETE THE SIDEWALK. INSTALL HEAT TRACER WIRES IN THE DOWNPOUTS AND OUTLET PIPES, AND CONNECT TO BUILDING ELECTRICAL SYSTEM (REFER TO ELECTRICAL DRAWINGS)

ON SITE SWM RETENTION
 REQUIRED 5 YEAR RETENTION 104 m³
 REQUIRED 100 YEAR RETENTION 262 m³
AVAILABLE STORAGE IN COMMERCIAL AREA
 STORM SEWERS AND MANHOLES 20 m³
 SURFACE PONDING
 PONDING AREA 1,200 m²
 100 YEAR PONDING DEPTH 0.20 m
 STORAGE CAPACITY 120 m³
 5 YEAR PONDING DEPTH 0.20 m
 TOTAL AVAILABLE STORAGE IN COMMERCIAL AREA 140 m³
 REQUIRED POST DEVELOPMENT STORAGE IN RESIDENTIAL AREA 122 m³
 REQUIRED RETENTION VOLUME TO BE ACCOMMODATED BY ROOF STORAGE AND SURFACE PONDING

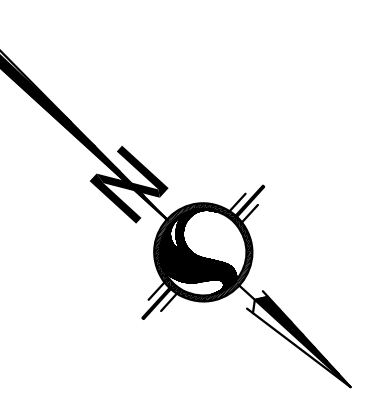
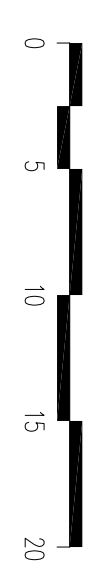
BENCH MARK
 FROM TOPO SURVEY
 PK NAIL IN UTILITY POLE ALONG THE SOUTH SIDE OF PERTH STREET - ELEVATION 95.32

CDS PAVSU 20-20-5, OR EQUIVALENT
 TOP 95.15
 INLET AND OUTLET INV. 93.12
 REFER TO SPECIFICATIONS IN THE SERVICES AND SWM REPORT

PAVEMENT DESIGN

LIGHT DUTY	300 mm
GRANULAR B TYPE II	150 mm
GRANULAR A	50 mm
SUPERPAVE 12.5	
HEAVY DUTY	450 mm
GRANULAR B TYPE II	150 mm
GRANULAR A	60 mm
SUPERPAVE 12.5	40 mm
ASPHALT TO BE PG-34	

GENERAL NOTE:
 THE POSITION OF ALL POLE LINES, CONDUITS, SEWERS AND OTHER UNDERGROUND AND OVERGROUND UTILITIES SHALL BE VERIFIED PRIOR TO CONSTRUCTION. CONTRACTOR IS NOT GUARANTEED BEFORE STARTING WORK TO DETERMINE THE EXACT LOCATION OF ALL SUCH UTILITIES AND STRUCTURES AND ASSUME ALL LIABILITY FOR DAMAGE TO THEM.



Capital Engineering
 Municipal / Land Development
 110 Dosseller Way
 Ottawa, Ontario K1G 4S5
 T: (613) 739-0776 F: (613) 739-7392
 E: ce@cei.rogers.com

NO. ISSUE & REVISIONS	DATE
1	Issued for Site Plan Application 2017/04/13

SEAL

PROJECT
RICHMOND OAKS
MEDICAL CENTRE
 6666 Perth Street
 Village of Richmond, Ontario

DRAWING AND DRAINAGE PLAN

Do not scale. Refer any dimensional errors and/or possible trade interference/conflict to the architect for clarification prior to commencement of the work.
 The conditions of the contract apply.

PROJECT NO. 1715
 DRAWING NO. **G2**