

**EROSION AND SEDIMENT CONTROL**

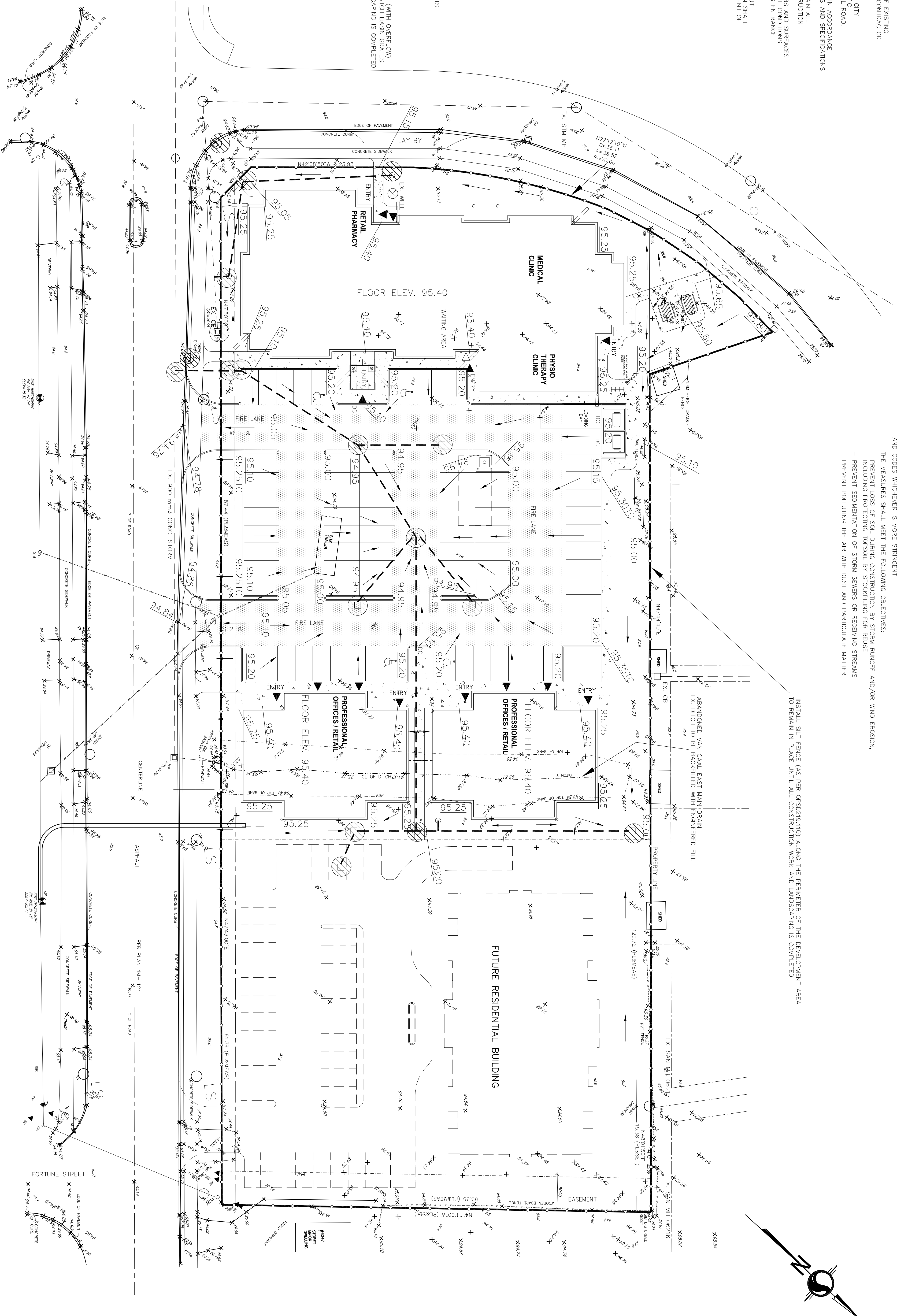
THE CONTRACTOR SHALL IMPLEMENT BEST MANAGEMENT PRACTICES, TO PROVIDE FOR THE PROTECTION OF THE ENVIRONMENT AND PREVENT EROSION AND SEDIMENTATION DURING CONSTRUCTION ACTIVITIES. THIS INCLUDES LIMITING THE AMOUNT OF EXPOSED SOIL, USING FILTER CLOTH UNDER THE GRATES OF CATCHBASINS AND MANHOLES AND INSTALLING SILT FENCES AND OTHER EFFECTIVE SEDIMENT TRAPS. SEDIMENT AND EROSION CONTROL MEASURES TO CONFORM TO MCE GUIDELINE B-6 "GUIDELINES FOR EVALUATING CONSTRUCTION ACTIVITIES IMPACTING ON WATER RESOURCES", OR LOCAL STANDARDS AND CODES WHOEVER IS MORE STRINGENT. THE MEASURES SHALL MEET THE FOLLOWING OBJECTIVES:

- PREVENT LOSS OF SOIL DURING CONSTRUCTION BY STORM RUNOFF AND/OR WIND EROSION,
- INCLUDING PROTECTING TOPSOIL BY STOCKPILING FOR REUSE
- PREVENT SEDIMENTATION OF STORM SEWERS OR RECEIVING STREAMS
- PREVENT POLLUTING THE AIR WITH DUST AND PARTICULATE MATTER

- NOTES**
- DO NOT SCALE DRAWING
  - VERIFY LOCATIONS AND ELEVATIONS OF EXISTING UTILITIES AND STRUCTURES. CONTRACTOR IS RESPONSIBLE TO OBTAIN LOCATES
  - CONTRACTOR IS TO COOPERATE WITH THE CITY OF OTTAWA FOR CONTROL WHEN WORKING ON MUNICIPAL ROAD.
  - ALL WORK AND MATERIALS SHALL BE IN ACCORDANCE WITH THE CITY OF OTTAWA STANDARDS AND SPECIFICATIONS
  - CONTRACTOR IS RESPONSIBLE TO OBTAIN ALL NECESSARY PERMITS PRIOR TO CONSTRUCTION
  - RESTORE PAVEMENT STRUCTURE, CURBS AND SURFACES ON EXISTING ROADS TO THEIR ORIGINAL CONDITIONS REMEDIATE DRAINAGE CURB AT EXISTING ENTRANCE
  - REFER TO ARCHITECT'S PLANS FOR BUILDING DIMENSIONS AND ELEVATIONS. CONTRACTOR SHALL BE CONFERRED PRIOR TO COMMENCEMENT OF CONSTRUCTION.

- LEGEND**
- 95.40 PROPOSED ELEVATION
  - EXISTING ELEVATION
  - 95.151C TOP OF CURB
  - 94.705W CENTRE LINE OF SWALE
  - UP DIRECTION OF FLOW
  - DC UTILITY POLE
  - LS DEPRESSED CURB
  - STORM SEWER LOCATION OF DOWNSPOUTS
  - PROPERTY LINE
  - PLACE GEOSOCK INSERTS (WITH OVERFLOW) UNDER ALL MH'S AND CATCH BASIN GRATES, TO REMAIN UNTIL LANDSCAPING IS COMPLETED
  - HEAVY DUTY ASPHALT
  - LIGHT DUTY ASPHALT

**BENCH MARK**  
FROM TOPO SURVEY  
PK NAIL IN UTILITY POLE ALONG THE SOUTH SIDE OF PERIN STREET - ELEVATION 95.32



**GENERAL NOTE:**  
THE POSITION OF ALL POLE LINES, CONDUITS, SEWERS AND OTHER UNDERGROUND AND OVERGROUND UTILITIES HAS BEEN OBTAINED FROM THE CITY OF OTTAWA. CONTRACTOR SHALL VERIFY THE LOCATION OF SUCH UTILITIES AND STRUCTURES IS NOT GUARANTEED BEFORE STARTING WORK. DETERMINE THE EXACT LOCATION OF ALL SUCH UTILITIES AND STRUCTURES AND ASSUME ALL LIABILITY FOR DAMAGE TO THEM.

<p>Capital Engineering Group Ltd Municipal / Land Development</p> <p>110 Dufferin Way Ottawa, Ontario K1G 4S5 T: (613)739-0776 F: (613)739-7302 E: ce@cegroup.com</p>		<p>0 5 10 15 20</p>
<p>PROJECT <b>RICHMOND OAKS MEDICAL CENTRE</b></p> <p>2285 Perth Street Village of Richmond, Ontario</p>		<p>110 Dufferin Way Ottawa, Ontario K1G 4S5 T: (613)739-0776 F: (613)739-7302 E: ce@cegroup.com</p>
<p>DRAWING <b>EROSION &amp; SEDIMENT CONTROL PLAN</b></p>		<p>110 Dufferin Way Ottawa, Ontario K1G 4S5 T: (613)739-0776 F: (613)739-7302 E: ce@cegroup.com</p>
<p>PROJECT NO. 1715 DRAWING NO. <b>G4</b></p>		<p>110 Dufferin Way Ottawa, Ontario K1G 4S5 T: (613)739-0776 F: (613)739-7302 E: ce@cegroup.com</p>
<p>PROJECT NO. 1715 DRAWING NO. <b>G4</b></p>		<p>110 Dufferin Way Ottawa, Ontario K1G 4S5 T: (613)739-0776 F: (613)739-7302 E: ce@cegroup.com</p>
<p>PROJECT NO. 1715 DRAWING NO. <b>G4</b></p>		<p>110 Dufferin Way Ottawa, Ontario K1G 4S5 T: (613)739-0776 F: (613)739-7302 E: ce@cegroup.com</p>