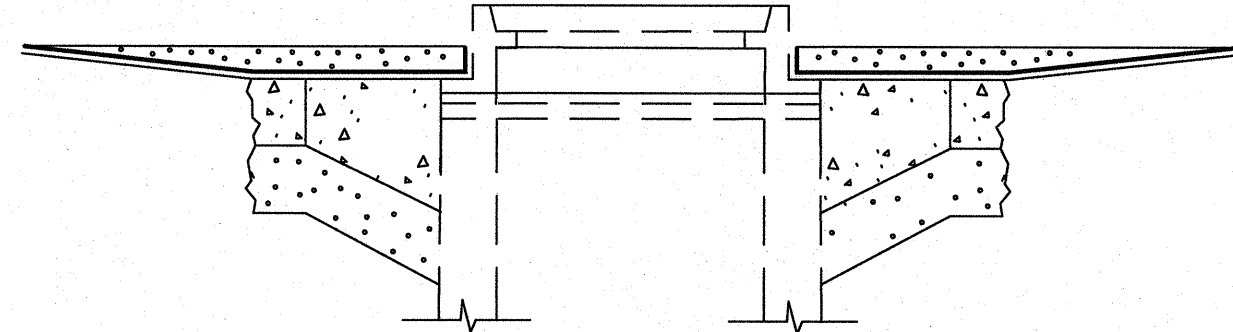


EROSION AND SEDIMENT CONTROLS DURING CONSTRUCTION.

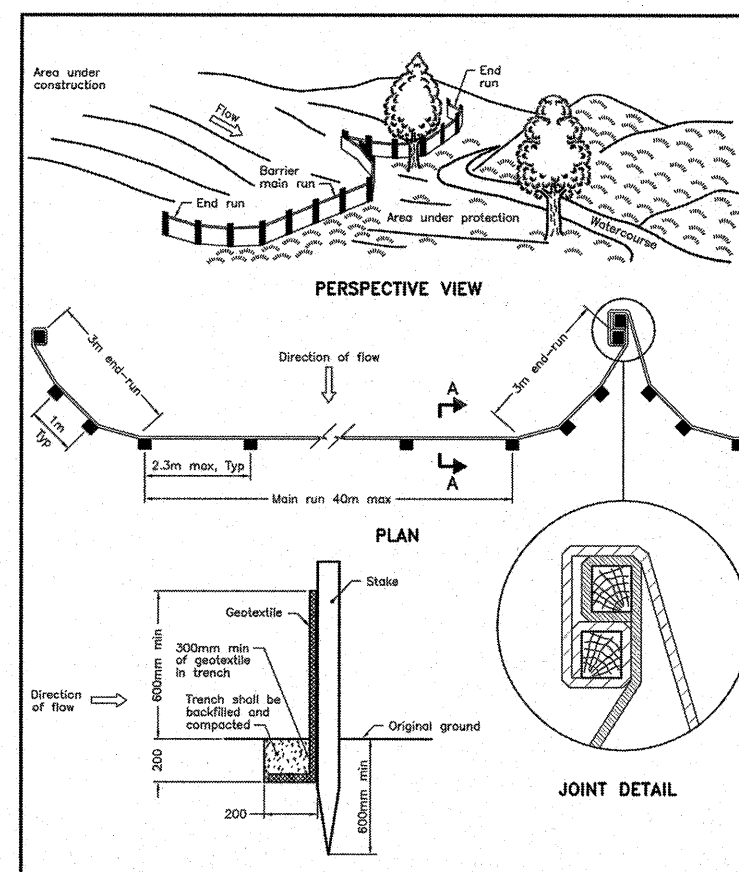
THE CONTRACTOR SHALL IMPLEMENT BEST MANAGED PRACTICES, TO PROVIDE FOR PROTECTION OF THE DRAINAGE SYSTEM AND THE RECEIVING WATERCOURSE, DURING CONSTRUCTION ACTIVITIES. THE CONTRACTOR ACKNOWLEDGES THAT FAILURE TO IMPLEMENT APPROPRIATE EROSION AND SEDIMENT CONTROL MEASURES MAY BE SUBJECT TO PENALTIES IMPOSED BY ANY APPLICABLE REGULATORY AGENCY.

DURING ALL CONSTRUCTION ACTIVITIES, EROSION AND SEDIMENTATION SHALL BE CONTROLLED BY THE FOLLOWING TECHNIQUES:

1. LIMITING THE EXTENT OF EXPOSED SOILS AT ANY GIVEN TIME.
2. RE-VEGETATION OF EXPOSED AREAS AS SOON AS POSSIBLE.
3. MINIMIZING THE AREA TO BE CLEARED AND DISRUPTION TO ADJACENT AREAS.
4. A SILT FENCE BARRIER (OPSD 219.110) TO BE INSTALLED AS SHOWN ON THIS DRAWING.
5. A VISUAL INSPECTION SHALL BE COMPLETED DAILY ON SEDIMENT CONTROL BARRIERS AND ANY DAMAGE REPAIRED IMMEDIATELY. CARE WILL BE TAKEN TO PREVENT DAMAGE DURING CONSTRUCTION OPERATIONS.
6. IN SOME CASES SOME BARRIERS MAY BE REMOVED TEMPORARILY TO ACCOMMODATE THE CONSTRUCTION OPERATIONS. THE AFFECTED BARRIERS WILL BE REINSTATED AT NIGHT WHEN CONSTRUCTION IS COMPLETED.
7. THE SEDIMENT CONTROL DEVICES WILL BE CLEANED OF ACCUMULATED SILT AS REQUIRED. THE DEPOSITS WILL BE DISPOSED OF AS PER THE REQUIREMENTS OF THE CONTRACT.
8. DURING THE COURSE OF CONSTRUCTION IF THE ENGINEER BELIEVES THAT ADDITIONAL PREVENTION METHODS ARE REQUIRED TO CONTROL EROSION AND SEDIMENTATION, THE CONTRACTOR WILL INSTALL ADDITIONAL SILT FENCES OR OTHER METHODS AS REQUIRED TO THE SATISFACTION OF THE ENGINEER.
9. CONSTRUCTION AND MAINTENANCE REQUIREMENTS FOR EROSION AND SEDIMENT CONTROLS TO COMPLY WITH ONTARIO PROVINCIAL STANDARD SPECIFICATION (OPSS) OPSS 805, AND CITY OF OTTAWA SPECIFICATIONS.



IN ACCORDANCE WITH BEST MANAGEMENT PRACTICES FOR EROSION AND SEDIMENT CONTROL, GEOTEXTILE MATERIAL IS TO BE PLACED UNDERNEATH ALL STORM CATCHBASIN AND CATCHBASIN MANHOLE LIDS UNTIL CONSTRUCTION IS COMPLETE. GEOTEXTILE FABRIC AND 30mm OF CLEAR STONE TO BE PLACED AROUND PERIMETER OF CATCHBASINS AND CATCHBASIN MANHOLES TO ACT AS TEMPORARY SEDIMENT TRAPS. GEOTEXTILE AND CLEAR STONE TO BE DISPOSED OF PRIOR TO PAVING.



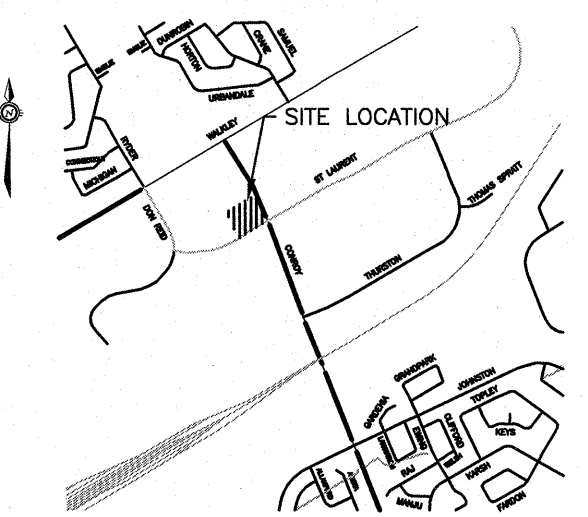
NOTE:
A. All dimensions are in millimetres unless otherwise shown.

ONTARIO PROVINCIAL STANDARD DRAWING
LIGHT-DUTY
SILT FENCE BARRIER
OPSD 219.110

SILT FENCE NOTES:

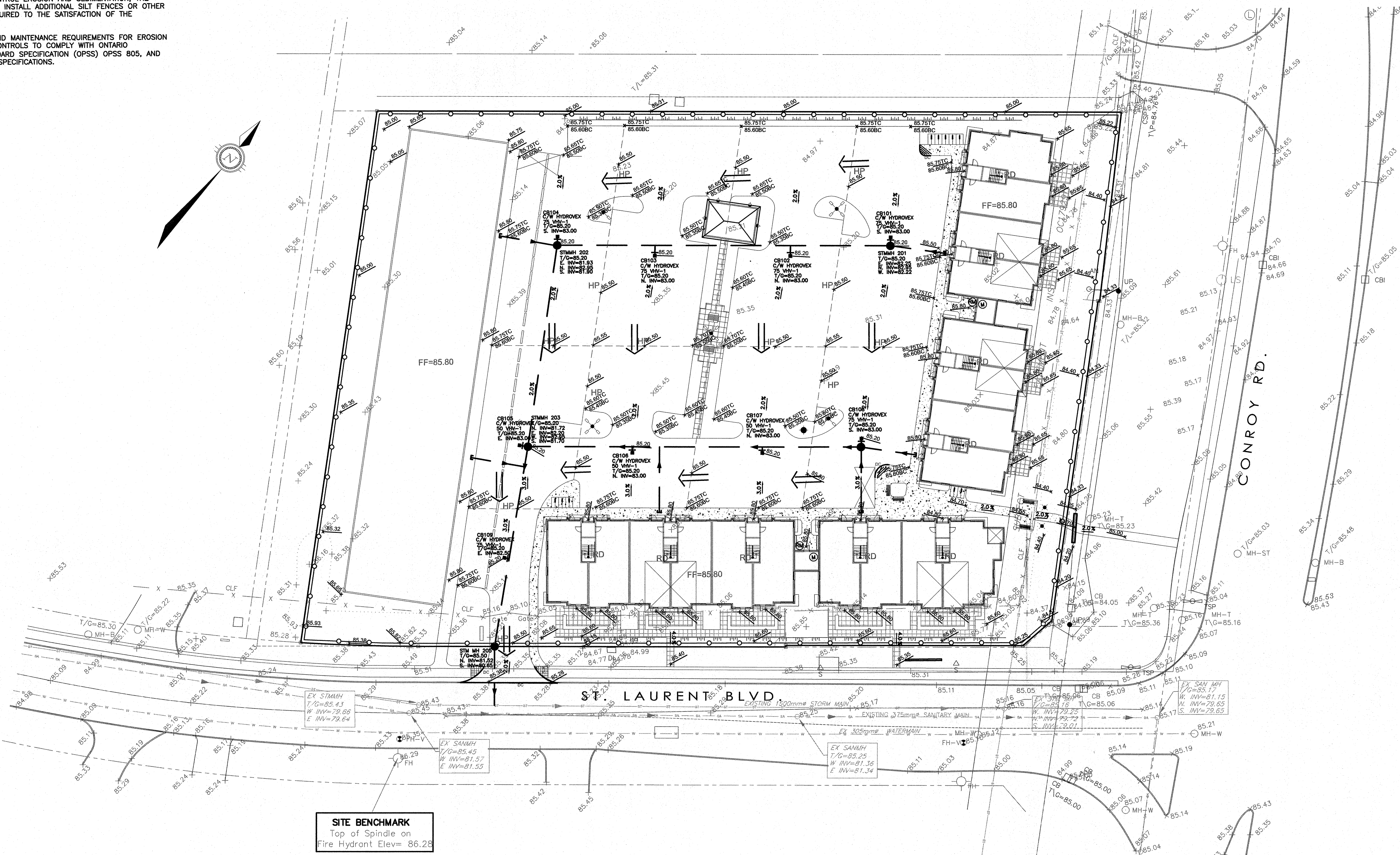
1. POSTS TO BE SPACED AT 2.3 METRES CENTRE TO CENTRE.
2. WHEN TWO SECTIONS OF FILTER CLOTH ADJOIN EACH OTHER THEY SHALL BE OVERLAPPED BY A MINIMUM OF 500mm.
3. MAINTENANCE SHALL BE PERFORMED AS NEEDED AND MATERIAL REMOVED WHEN "BULGES" DEVELOP IN THE SILT FENCE.
4. WOOD POSTS TO BE HARDWOOD TYPE (50mm x 50mm).
5. GEOTEXTILE TO BE EMBEDDED 200 mm INTO GROUND.
6. GEOTEXTILE TO CONFORM TO OPSS 805 STANDARDS.
7. SILT FENCE MUST BE INSTALLED BEFORE COMMENCEMENT OF CONSTRUCTION AND IN ACCORDANCE WITH DETAIL. SILT FENCE CAN BE REMOVED AFTER LANDSCAPING IS COMPLETE.
8. SEDIMENTS MUST BE CLEARED AWAY WHEN THEY REACH HALF THE HEIGHT OF THE FENCE.

KEY PLAN



LEGEND

- SB - STANDARD IRON BAR
 - IR - IRON BAR
 - CB - CATCH BASIN
 - WM - WATER MANHOLE
 - LS - LAMP STANDARD
 - UP - UTILITY POLE
 - WV - WATER VALVE
 - FW - FIRE HYDRANT
 - W - WELL
 - GW - GUY WIRE AND ANCHOR
 - WM - WATERMAIN
 - OW - OVERHEAD UTILITY WIRES
 - UH - UNDERGROUND HYDRO
 - UB - UNDERGROUND BELL
 - OM - GAS MAIN
 - CS - CABLE (ROGERS)
 - SL - STREET LIGHT
 - ST - STORM SEWER
 - SS - SANITARY SEWER
 - CB - CURB
- PROPOSED SILT FENCE
- OVERLAND FLOW DIRECTION



SITE INFORMATION DERIVED FROM SURVEYOR'S REAL PROPERTY REPORT PART 1 PLAN OF PART OF LOT 1 CONCESSION 4 (RIDEAU FRONT) GEOGRAPHIC TOWNSHIP OF GLOUCESTER CITY OF OTTAWA PREPARED BY ANNIS, O'SULLIVAN, VOLLEBECK LTD. ONTARIO LAND SURVEYORS 14 CONCOURSE GATE, SUITE 500 NEPEAN, ONTARIO K2E 7S6

-ARCHITECTURAL PLANS PREPARED BY: M. DAVID BLAKELY ARCHITECT INC. 2200 PRINCE OF WALES DR. SUITE 101 OTTAWA, ONTARIO K2E 6Z9

- LANDSCAPE PLAN PREPARED BY: JAMES B. LENNOX AND ASSOCIATES INC. 3332 Carling Ave. Ottawa, Ontario K2H 5A8

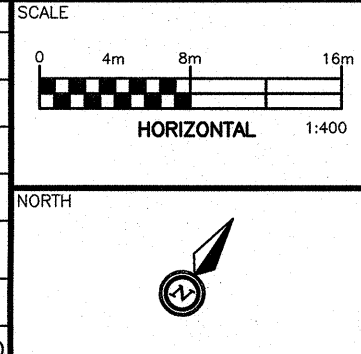
APPROVED ☐ REFUSED ☐
THIS ____ DAY OF ____, 20__

DON HERWEYER, MCIP, RPP.
MANAGER, DEVELOPMENT REVIEW - SOUTH PLANNING, INFRASTRUCTURE AND ECONOMIC DEVELOPMENT DEPARTMENT, CITY OF OTTAWA

CAUTION
THE POSITION OF ALL POLE LINES, CONDUITS, WATERMANS, SEWERS AND OTHER UNDERGROUND UTILITIES AND STRUCTURES IS NOT NECESSARILY SHOWN ON THE CONTRACT DRAWINGS, AND WHERE SHOWN, THE ACCURACY OF THE POSITION OF SUCH UTILITIES AND STRUCTURES IS NOT GUARANTEED. BEFORE STARTING WORK, DETERMINE THE EXACT LOCATION OF ALL SUCH UTILITIES AND STRUCTURES AND ASSUME ALL LIABILITY FOR DAMAGE TO THEM.

PRELIMINARY
NOT FOR CONSTRUCTION

NO.	REVISION DESCRIPTION	DATE	BY	APPD
2	REVISED AS PER CITY COMMENTS	22/02/18	ML	AA
1	ISSUED FOR SITE PLAN APPROVAL	19/09/17	ML	AA



DESIGNED BY

REVIEWED BY

CONROY BUSINESS PARK INC
1890 BROADMOOR AVE.
OTTAWA, ONTARIO K1H 5B4
(613)-799-5565

exp.
• BUILDINGS • EARTH & ENVIRONMENT • ENERGY •
• INDUSTRIAL • INFRASTRUCTURE • SUSTAINABILITY •

DESIGN	ML
CHECKED	ML
CAD	AA
PROJECT MANAGER	AA
APPROVED	AA

PROJECT	CONROY BUSINESS PARK 2500 ST LAURENT BLVD. OTTAWA, ON
TITLE	EROSION & SEDIMENT CONTROL PLAN

PROJECT NO.	OTT-00238830-A0
SURVEY	---
DATE	---
DRAWING NO.	ESCP-1