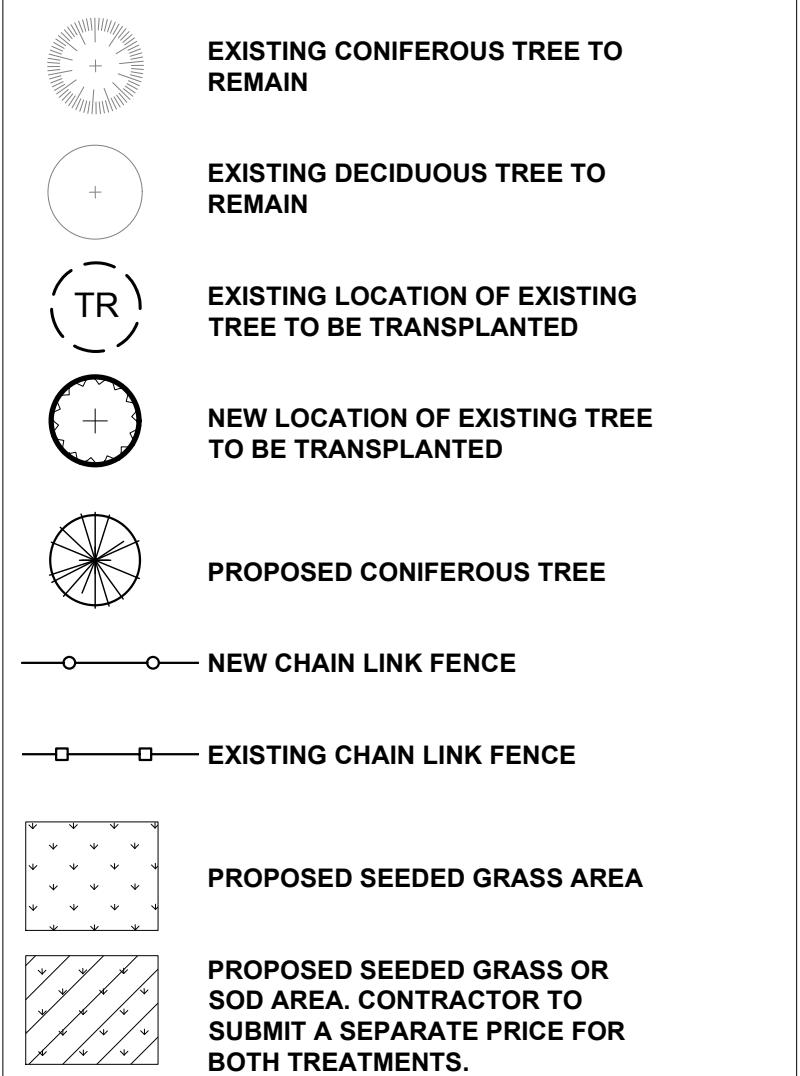


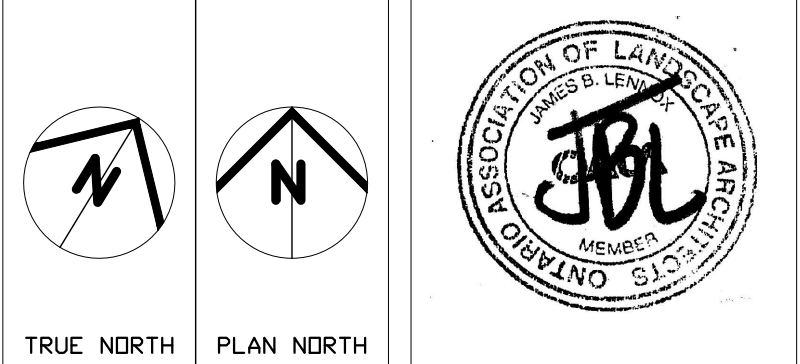
LEGEND



3	0	2018/05/02	REVISED PER CITY COMMENTS
2	0	2018/03/27	ISSUED FOR BUILDING PERMIT
1	0	2018/03/08	ISSUED FOR SITE PLAN CONTROL
ISSUE NO.	REV. NO.	DATE YYYY/MM/DD	ISSUE

GENERAL NOTES

1. It is the responsibility of the appropriate contractor or official to report any errors, omissions or discrepancies on the plan with actual site conditions to the Landscape Architect prior to construction.
2. The contractor is notified all utility companies and authorities prior to any excavation and ascertain locations of underground services.
3. The contractor is to reinstatement all areas and items damaged as a result of construction activity.
4. The contractor is comply with all pertinent codes and by-laws.
5. The contractor is to maintain a positive surface runoff throughout the entire construction period.
6. The Landscape Architect is not responsible for subsurface conditions.
7. The contractor is to identify all existing trees to remain on site with the Landscape Architect prior to construction.
8. The contractor is to attain the proposed location of all plant material in conjunction with the Landscape Architect prior to excavation.
9. Minimum distances for selected deciduous trees are as follows:
 - Ball Trees: 7.5m
 - Street Trees: 5m
 - Sidewalks: 1.5m
 - Public Streets: 3m
 - Underground Infrastructure: 2.0m
10. All trees within 1m of underground utility trenches are to be excavated by hand.
11. Removal of protective wrapping from tree trunks after installation.
12. Staking of trees shall only be performed if necessary.
13. Ensure that mulch is pulled back a min. distance of 75mm from base of tree.




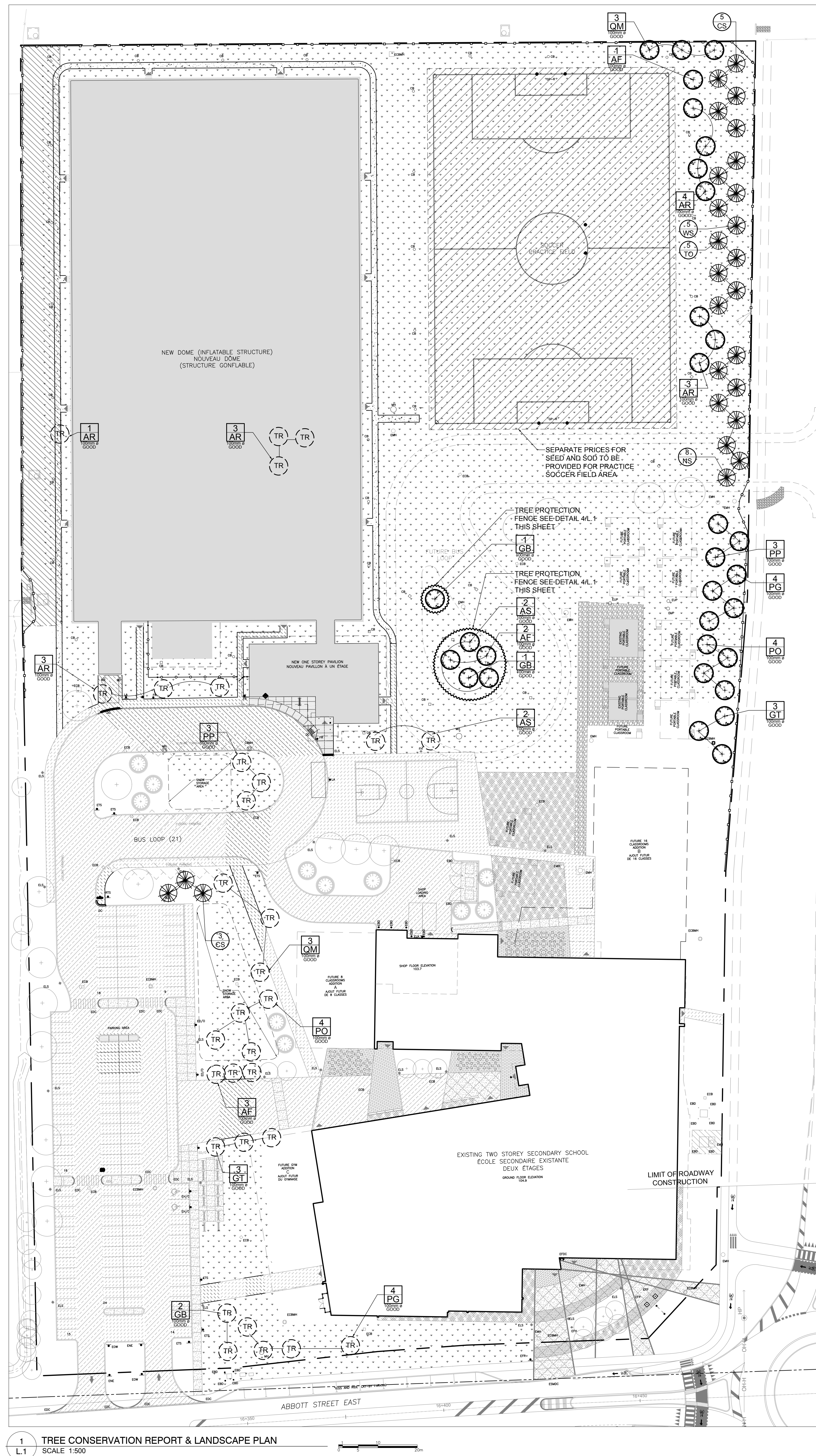
EDWARD J. CUHACI
& ASSOCIATES ARCHITECTS Inc.
 171 Slater St. Suite 100, Ottawa, Ontario, K1P 5H7
 Fax: (613) 236-1944 Telephone: (613) 236-7135 E-mail: info@cuhaci.com

PROJECT TITLE/TITRE DU PROJET
ÉCOLE SECONDAIRE CATHOLIQUE
PAUL-DESMARAIS - DOME
5315 ABBOTT STREET E.
OTTAWA, ON.

CONSEIL DES ÉCOLES CATHOLIQUES
DU CENTRE-EST
4000, RUE LABELLE, OTTAWA, ON K1J 1A1

TREE CONSERVATION REPORT & LANDSCAPE PLAN

SCALE		PROJ. No	ISSUE No	REV. No
ÉCHELLE	1:500	17-EJC-1769	3	0
DRAWN BY	ML			
DESSINE PAR				
CHECKED BY	JL			
VÉRIFIÉ PAR				
DATE	2018/05/02	ACAD FILE/FICHER		

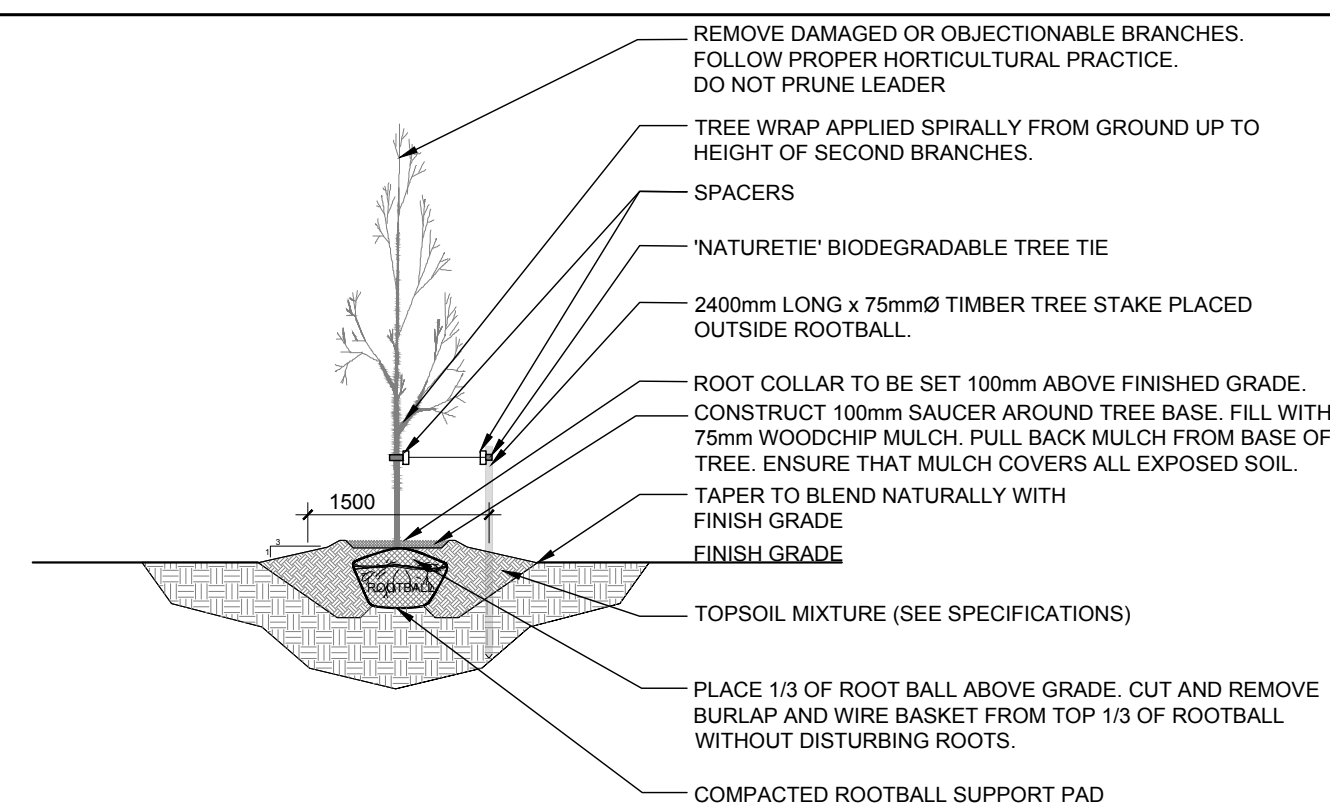


EXISTING TREES TO BE TRANSPLANTED LIST

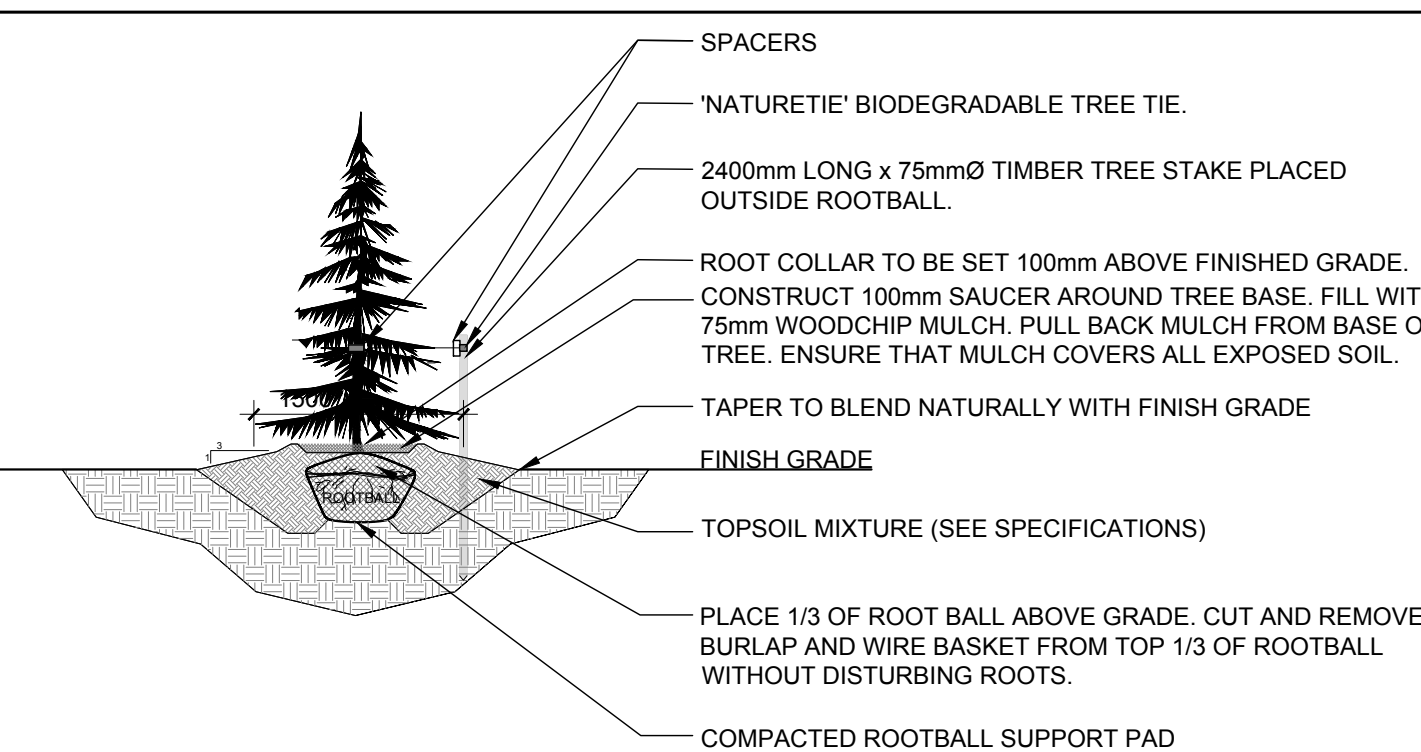
KEY	QTY	SIZE			REMARKS
		BOTANICAL NAME	COMMON NAME	SIZE	
TREES					
AF	3	Acer x freemanii	Freeman's Maple	100mm x	GOOD See Plan
AR	7	Acer rubrum	Red Maple	100mm x	GOOD See Plan
AS	3	Acer saccharum	Sugar Maple	100mm x	GOOD See Plan
GB	2	Corylus bixoba	Maidenhair Tree	100mm x	GOOD See Plan
PG	4	Gleditsia inacanthos	Honey Locust	100mm x	GOOD See Plan
PG	4	Picea glauca	White Spruce	100mm x	GOOD See Plan
PO	4	Picea omorika	Serbian Spruce	100mm x	GOOD See Plan
PP	4	Picea pungens	Red Spruce	100mm x	GOOD See Plan
QM	3	Quercus macrocarpa	Bur Oak	100mm x	GOOD See Plan

PROPOSED PLANT LIST

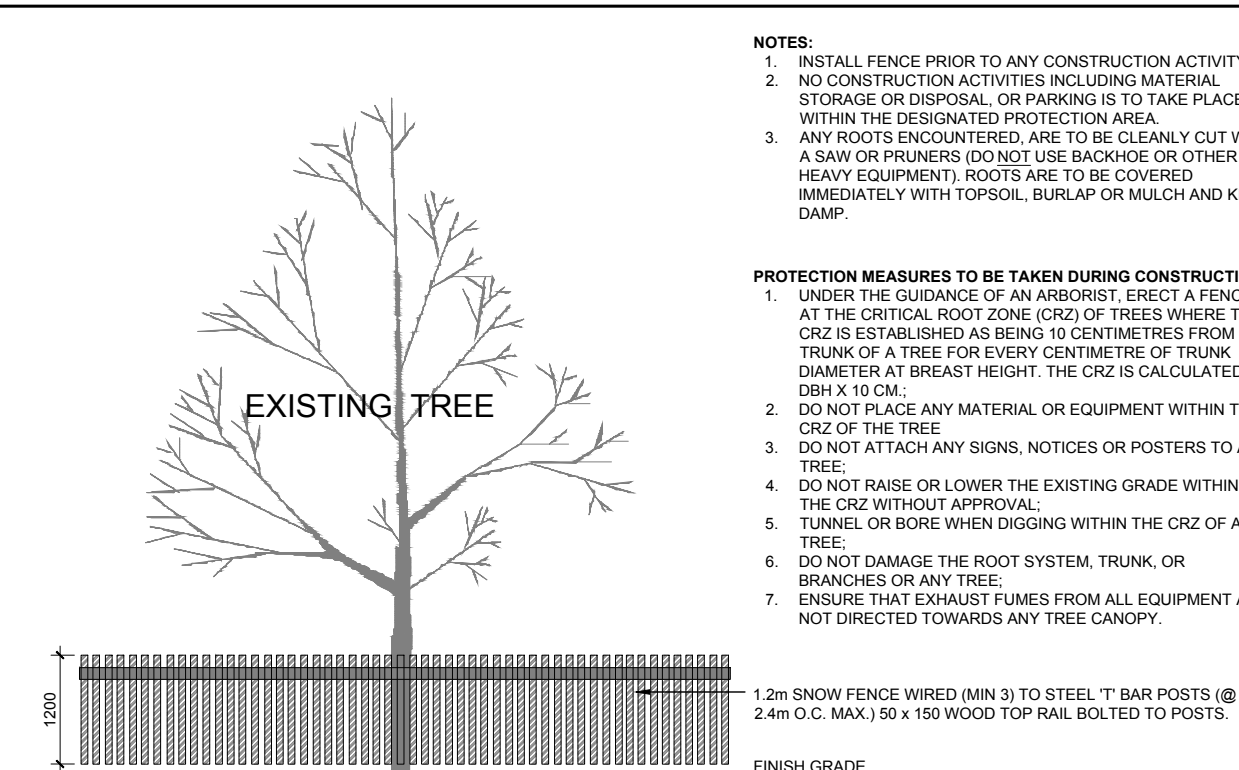
KEY	QTY	BOTANICAL NAME	COMMON NAME	SIZE	CONDITION	REMARKS
TREES						
CS	8	Picea pungens	Colorado Spruce	1.2m Ht.	Potted	See Plan
NS	8	Picea abies	Newway Spruce	1.2m Ht.	Potted	See Plan
TO	5	Thuja occidentalis	Eastern White Cedar	1.2m Ht.	Potted	See Plan
WS	5	Picea glauca	White Spruce	1.2m Ht.	Potted	See Plan



2 DECIDUOUS TREE PLANTING
1 SCALE: NTS



3 CONIFEROUS TREE PLANTING
L1 SCALE: NTS



NOTE: TREES ARE TO BE PROTECTED WITH A TREE PROTECTION FENCE DURING THE CONSTRUCTION PERIOD.